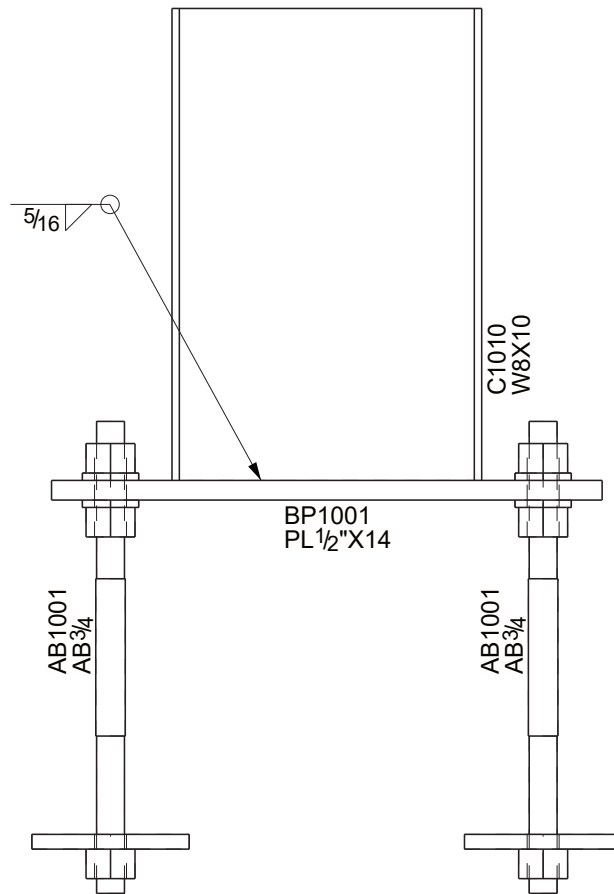


# COLUMN BASE PLATE ACTIVITY



# COLUMN BASE PLATE ACTIVITY

## ACTUAL BILL OF MATERIALS

- (1) AB1001 anchor bolt assembly for discussion, not to be used in actual assembly
- (4)  $\frac{3}{4}$ "  $\varnothing$   $\times$  2" long bolts, nuts, and washers to simulate anchor bolts extending above the base plate
- (1) BP1001 base plate
- (1) C1010 column
- (1)  $\frac{3}{4}$ "  $\times$  15 $\frac{1}{2}$ "  $\times$  1'-3 $\frac{1}{2}$ " plywood with 1 $\frac{1}{2}$ "  $\varnothing$  holes – chamfer each side 45° to imitate the slope of grout from the underside of the base plate – paint grey to simulate grout
- (2)  $\frac{3}{4}$ "  $\times$  4" long wood quarter-round – paint grey to simulate weld metal
- (2)  $\frac{3}{4}$ "  $\times$  6 $\frac{1}{2}$ " long wood quarter-round – paint grey to simulate weld metal
- (2)  $\frac{1}{16}$ "  $\times$   $\frac{1}{2}$ "  $\times$  4" long flexible magnetic tape
- (2)  $\frac{1}{16}$ "  $\times$   $\frac{1}{2}$ "  $\times$  6 $\frac{1}{2}$ " long flexible magnetic tape

## FABRICATION

- Fabricate all individual pieces
- Do not weld anything shown in the shop document
- Tack weld the heads of the bolts to the underside of the plate to prevent them from turning during use
- Paint wood components grey, if you prefer
- Attach magnetic tape to corresponding quarter-round pieces

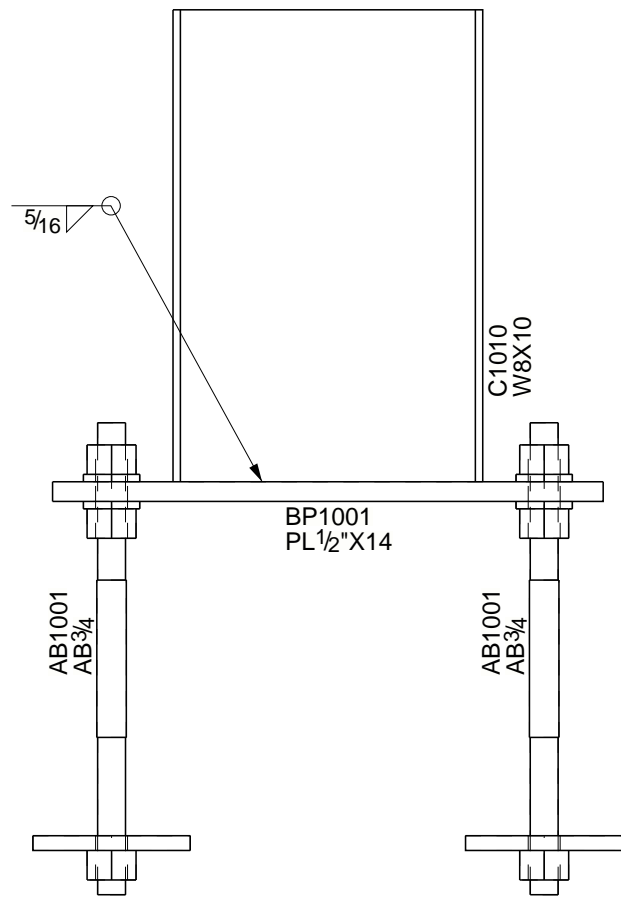
## ACTIVITY

- Start – the base plate should already be placed on the plywood grout with the bolt threads exposed
- Place the WF member in line with the marking on the plate
- Add the magnetic 3D welds to the surfaces of WF members interfacing with the base plate
- Install the nuts to the bolt threads
- When the activity and the conversation are complete, undo the actions for the next participant


## HIGHLIGHTS

- Note which actions occur in the shop and which occur on a job site
- Columns are shipped out to the site with the base plate and other miscellaneous connection pieces attached to the column member
- The anchor bolts are shipped loose to be set in the concrete before the column is erected on-site
- Base plates and other miscellaneous connection pieces are typically attached to the column when it is lying on its side, so this isn't exactly how a column would be fabricated in a shop



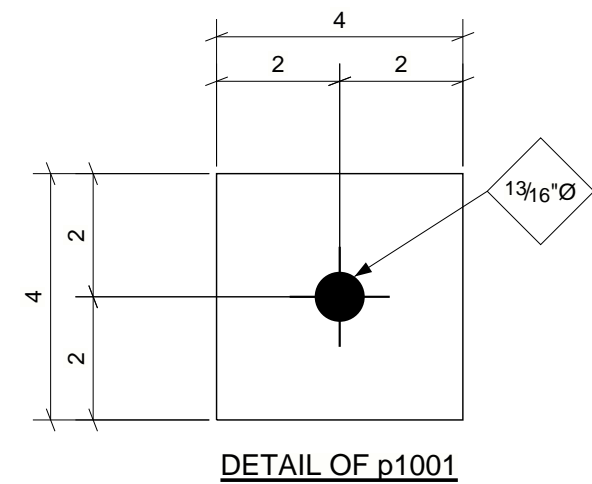
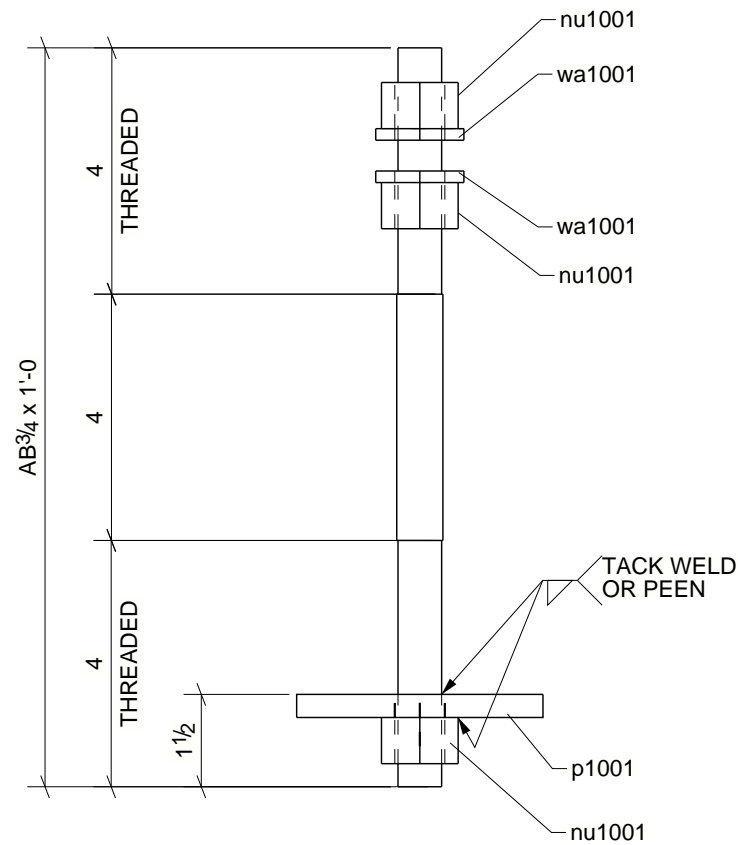


TYPICAL STEEL COLUMN BASE PLATE

DATE	NO.	DESCRIPTION	BY
01/23/2024	A	ISSUED FOR APPROVAL (IFA01)	CH
CONTACT US IF YOU HAVE ANY OF THESE PROBLEMS: ***** • DAMAGED STEEL CONNECTIONS • IMPROPER FIT • FIELD MODIFICATIONS • QUESTIONS ABOUT THESE DWGS ***** CALL OUR PROJECT MANAGER: LENEX OFFICE PHONE: (317) 818-1622 CELL PHONE: 317.818.1622		 LENEX STEEL CO. 450 E. 96TH STREET, SUITE 100 INDIANAPOLIS, INDIANA 317.818.1622   317.818.1255 (Fax)	
ELECTRODES E70XX UNO		PROJECT NAME WORKFORCE ZONE ACTIVITIES	
WELDS 1/4" FILLET UNO		LOCATION SAN ANTONIO, TX	
OPEN HOLES 13/16" Ø UNO		CONTRACTOR AISC W/ LENEX STEEL COMPANY	
BOLTS A325N_TC UNO		ARCHITECT	
		DESCRIPTION ACTIVITY #1	DRAWN BY CH 01/23/2024 CHECK BY KE 01/23/2024
			JOB No. NASCC 2024 DRG No. E1 REV A

QTY.	SITE BOLTS	LENGTH
------	------------	--------

SEQ	QTY
1	4



## 4 - ANCHORS - AB1001

### BILL OF MATERIAL

Qty Ea.	Qty Tot	Piece Mark	Description	Length	Weight Total	Remarks	Adv Mill #	Steel Grade
	4	AB1001	ANCHORS		4			
1	4		AB3/4"	1'-0"	5			F1554-36
1	4	p1001	PL3/8"X4"	0'-4"	7			A36
3	12	nu1001	3/4_HEAVY_HEX_NUT		2			A563
2	8	wa1001	3/4_WASHER		0			F436

ALL WELDING TO BE DONE IN ACCORDANCE WITH ANSI/AWS D1.1 STRUCTURAL WELDING CODE - STEEL, OF LATEST ISSUE	
HOLES 13/16"Ø BOLTS A325N_TC	UNO
COPEs 1/2" RADIUS	UNO
AESS CAT.	UNO
PAINT UNP	UNO

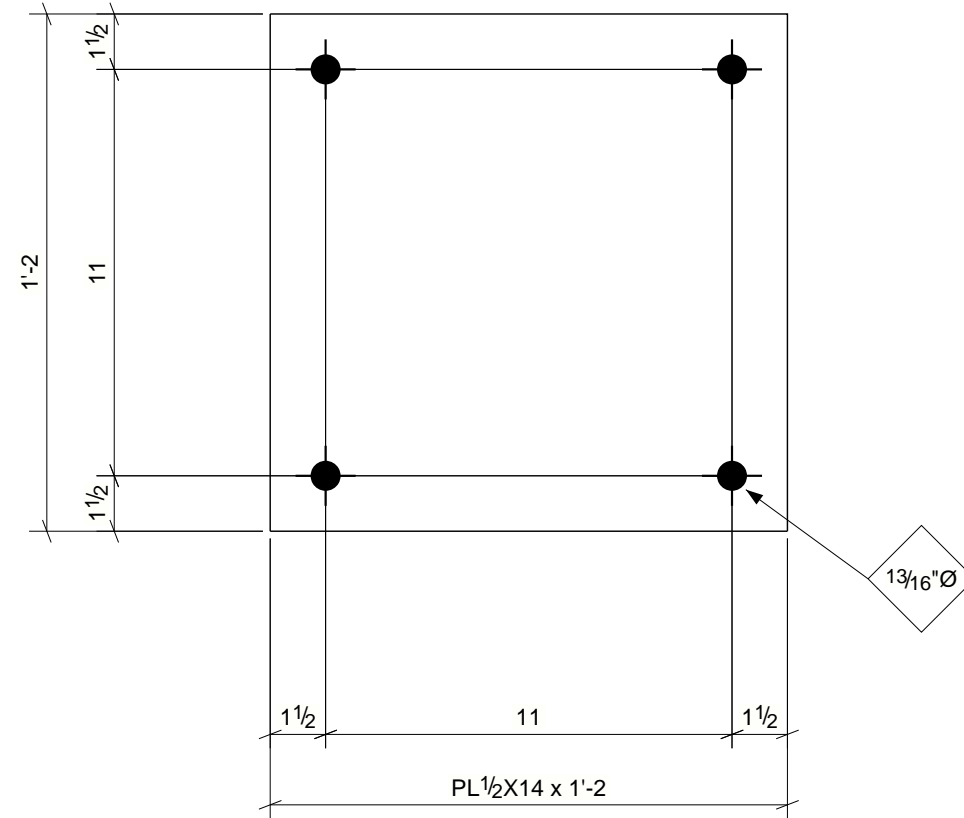
PROJECT NAME	WORKFORCE ZONE ACTIVITIES
LOCATION	SAN ANTONIO, TX
CONTRACTOR	AISC W/ LENEX STEEL COMPANY
ARCHITECT	

01/23/2024	ISSUED FOR APPROVAL (IFA01)	CH
DATE	NO.	BY
<b>LENEX STEEL CO.</b> 450 E. 96TH STREET, SUITE 100 INDIANAPOLIS, INDIANA 317.818.1622   317.818.1255 (Fax)		
DESCRIPTION	DRN BY	JOB No.
<b>ANCHOR</b>	CH 01/23/2024	<b>NASCC 2024</b>
	CHKD BY KE 01/23/2024	DRG No. <b>AB1001</b>

Tekla Structures

QTY.	SITE BOLTS	LENGTH
------	------------	--------

SEQ	QTY
1	1



## ONE - BASE - BP1001

Tekla Structures

### BILL OF MATERIAL

Qty Ea.	Qty Tot	Piece Mark	Description	Length	Weight Total	Remarks	Adv Mill #	Steel Grade
	1	BP1001	BASE		28			
1	1		PL1/2"X14"	1'-2"	28			A572-50

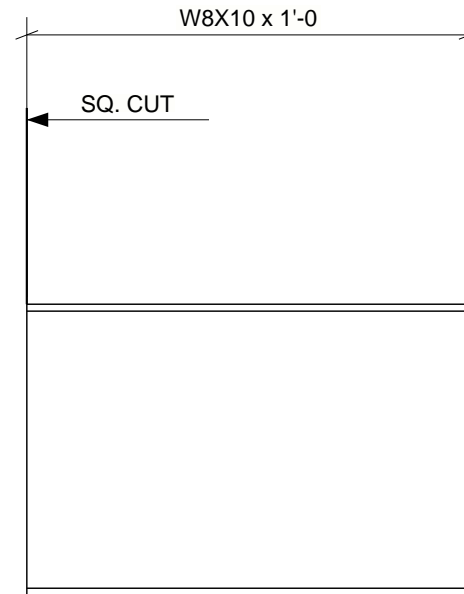
ALL WELDING TO BE DONE IN ACCORDANCE WITH ANSI/AWS D1.1 STRUCTURAL WELDING CODE - STEEL, OF LATEST ISSUE		
HOLES 13/16"Ø	BOLTS A325N_TC	UNO
COPIES	1/2" RADIUS	UNO
AESS CAT.		UNO
PAINT	UNP	UNO

PROJECT NAME WORKFORCE ZONE ACTIVITIES
LOCATION SAN ANTONIO, TX
CONTRACTOR AISC W/ LENEX STEEL COMPANY
ARCHITECT

01/23/2024	ISSUED FOR APPROVAL (IFA01)	CH
DATE	NO.	DESCRIPTION
<b>LENEX STEEL CO.</b> 450 E. 96TH STREET, SUITE 100 INDIANAPOLIS, INDIANA 317.818.1622   317.818.1255 (Fax)		
DESCRIPTION	DRN BY CH 01/23/2024	JOB No. NASCC 2024
BASEPLATE	CHKD BY KE 01/23/2024	DRG No. BP1001

QTY.	SITE BOLTS	LENGTH
------	------------	--------

SEQ	QTY
1	1



## ONE - COLUMN - C1010

W	7 7/8" x 3/16"
F	4" x 3/16"

01/23/2024	ISSUED FOR APPROVAL (IFA01)	CH
DATE	DESCRIPTION	BY

ALL WELDING TO BE DONE IN ACCORDANCE WITH ANSI/AWS D1.1 STRUCTURAL WELDING CODE - STEEL, OF LATEST ISSUE			PROJECT NAME WORKFORCE ZONE ACTIVITIES		
			LOCATION SAN ANTONIO, TX		
HOLES 13/16"Ø BOLTS A325N_TC UNO			CONTRACTOR AISC W/ LENEX STEEL COMPANY		
COPEs 1/2" RADIUS UNO			ARCHITECT		
AESS CAT. UNO					
PAINT UNP UNO					

<b>LENEX STEEL CO.</b> 450 E. 96TH STREET, SUITE 100 INDIANAPOLIS, INDIANA 317.818.1622   317.818.1255 (Fax)		JOB No. <b>NASCC 2024</b>	
		DRN BY CH 01/23/2024	
<b>COLUMN</b>		DRG No. <b>C1010</b>	
		CHKD BY KE 01/23/2024	

### BILL OF MATERIAL

Qty Ea.	Qty Tot	Piece Mark	Description	Length	Weight Total	Remarks	Adv Mill #	Steel Grade
1	1	C1010	COLUMN		10			
1	1		W8X10	1'-0"	10			A992

Tekla Structures