

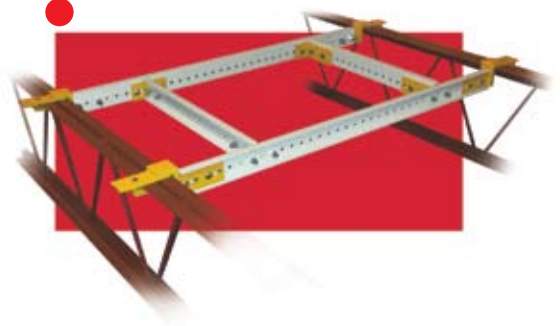
Each month MSC's product section features items from all areas of the steel construction industry.

In general, these products have been introduced within the past six months. If you're looking for a specific product, visit MSC's online product directory at www.modernsteel.com/products. You can browse by product category or search on any term to help find the products you need, fast.

Hanging from the Rafters

Chicago Clamp Company's new Framing Clamp System assists with framing roof openings and supporting loads above or below roof decks, making it suitable for installing HVAC equipment, exhaust fans, vents, and skylights. Because no welding or specialized tools are required, it can be easily installed and relocated. With a 1,000-lb capacity per end clamp, it consists of end clamps, T-brackets, and perforated channels. Using the system in a typical framing application, four end clamps are attached to two parallel bar joists or beams. Each end clamp slides over the top of the joists and occupies a space that is 1¼ in. high by 3 in. wide between the joists and corrugations of a standard roof deck. In most applications, four T-brackets are used to anchor a perpendicular set of perforated channels. Four perforated channels are usually required and are positioned between a pair of end clamps or T-brackets. Perforated channels are available in lengths up to 10 ft.

For more information, visit www.chicagoclampcompany.com or call 708.343.8311.



Two-in-One

Peddinghaus Corporation's Drill/Cope Tandem System combines the capacities of two machines into one effective shop fabrication process. All AISC structural shapes, including beams, columns, angle iron, channel iron, and HSS square and rectangular tubes, as well as thick plate and flat stock, can be processed in this system. This tandem machine can perform all typical functions of today's fabrication shop, including precise hole drilling, beam scribing, and all thermal coping and cut-off functions including bevels, flange thinning, and interior cuts. The powerful drive/positioning system provides capacity to split beams into tee sections and thermally cut haunches and beam castellations.

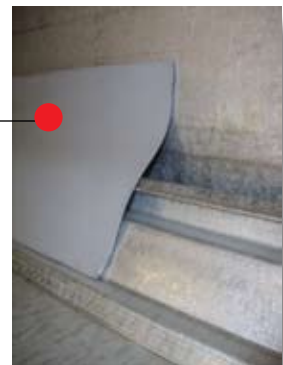
For more information, visit www.peddinghaus.com or call 815.937.3800.



Waterproof

Sealex, Inc.'s ImmerSeal pre-cured sealant is ideal for a wide range of metal building applications where a water-tight seal is required, including: expansion joints, roof-to-wall transitions, roof steps, ridge details, and other high-movement conditions. The sealant requires no mechanical fasteners, is resistant to UV degradation and weathering, has excellent movement capability, and is compatible with all types of metals and coatings commonly used in the metal building industry.

For more information, visit www.sealexinc.com or call 231.348.5020.

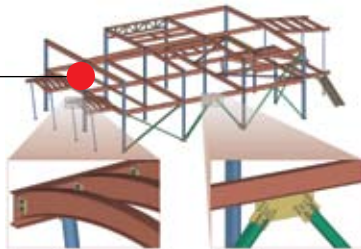


All products submitted are considered for publication, and we encourage submittals related to all segments of the steel industry: engineering, detailing, fabrication, and erection. Submit product information via e-mail to Geoff Weisenberger (weisenberger@modernsteel.com). To be included in MSC's online products directory, contact Louis Gurthet (gurthet@modernsteel.com).

Streamlining the Detailing Process

Design Data's SDS/2 steel detailing software features built-in intelligence to automatically design connections using a 3D model with a multitude of options for beams, columns, bracing, and joists. With the release of SDS/2 Version 7.1, SDS/2 users will notice some exciting new features that will help streamline processes and increase functionality. The software now allows users to add curved members with connection design and add clevises and turnbuckles into the 3D model. Members can now be grouped and detailed together with the bill of material, and it is also easier to copy and paste member information, such as connections and specifications, from member to member. This new version also features additional reports, including Status Report by Proximity, which will help the user to determine which members may be affected when a member is revised. In addition, SDS/2 will now design welded connections for vertical braces and will support sloping columns.

For more information, visit www.sds2.com or call 800.443.0782.



Increased Mobility

Hougen Manufacturing's new Model HMD904S Swivel Base Portable Magnetic Drill marks a major performance improvement to the versatile HMD904 model. The S series features a new drill body-to-magnetic base coupling that provides both a pivot axis for up to a 1 $\frac{1}{8}$ -in. arc of side-to-side motion and a straight-line axis that permits up to 1 $\frac{3}{8}$ in. of front-to-back movement. After the magnetic base has been engaged, the added axes allow operators to fine tune the drill position and precisely locate hole center points. The new unit incorporates a lockdown mechanism that, unlike similarly equipped models, makes releasing and securing the pivot and slide coupling simple, fast, and virtually effortless. A single-actuation handle with short stroke travel both unlocks and securely retightens the swivel base coupling.

For more information, visit www.hougen.com or call 810.635.7111.



On the Edge

Perimeter Protection Product's reusable guardrail system, for use on steel and concrete building projects, eliminates the waste and costs of the currently used angle iron OSHA posts. The system consists of a base plate and post. The base plate can be welded to the structural beams in the fabrication shop or in the field.

The posts are then screwed into the base plates in the field and support a wire cable at the perimeter of the building. They can be easily removed and reused on future buildings. The base plates become part of the building and at the roof level can be uncovered for future use as tie-off points with our fall arrestor accessory. The system eliminates 87% of workers' exposure to the edge of the building during installation and removal of the system.

For more information, visit www.PerimeterProtectionProducts.com or call 732.469.5626.

