

2009 HOT PRODUCTS



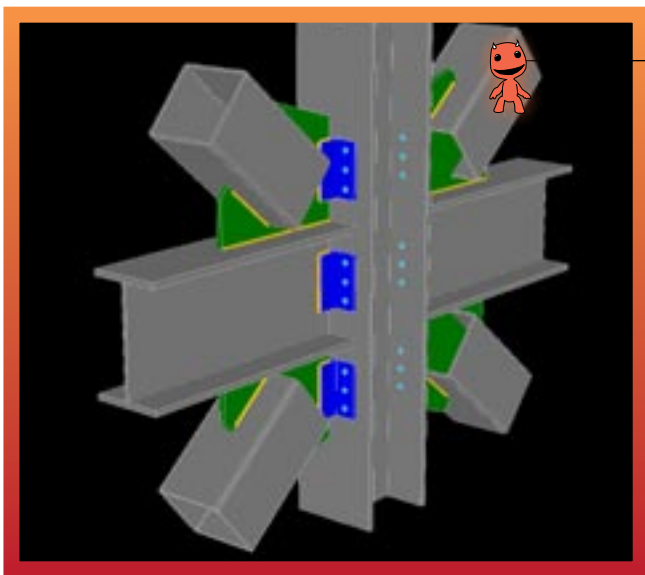
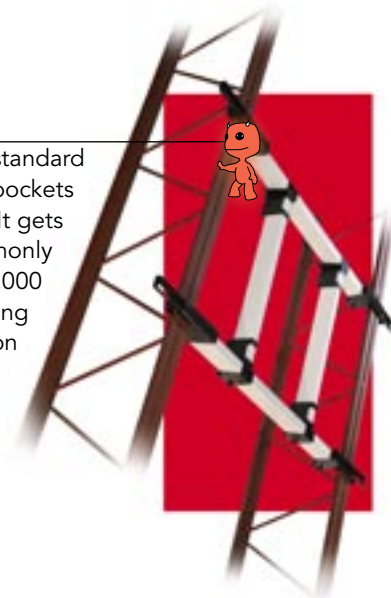
MACHINERY, SOFTWARE, TOOLS, AND SUPPLIES ARE the steel industry's most important accessories—and innovation among these products can mean faster, more cost-effective steel design and construction. This year's **Hot Products** are just a sample of some of the creative solutions recently introduced for designers, detailers, fabricators, and erectors. Some offer advanced technology, while others provide simple and practical applications in response to common problems. But all stand out as novel approaches to on-the-job difficulties.

Hot Products were selected by *MSC* staff from products offered by exhibitors at **NASCC: The Steel Conference** in Phoenix in April. Their selection was based on descriptions and claims by the manufacturers; no product testing or evaluation was performed. This list does not constitute a product endorsement by *Modern Steel Construction* or by AISC.

Tube Framing Clamp System

The new Tube Framing Clamp System uses four end clamps, four T-Brackets, and four standard structural grade 2-in. x 4-in. rectangular tubes. The system takes advantage of the pockets of the roof deck, sliding under deck corrugations and over joists for easy retrofitting. It gets bolted in place so there is less concern over fire hazards and undercutting risks commonly associated with the traditional welding methods. With a distributed load capacity of 3,000 lb per complete system, it is ideal for framing of skylights, roof hatches, or supporting rooftop loads. In addition, the design allows engineers and contractors great installation flexibility from simple roof openings to more complex support applications.

Contact: Chicago Clamp Co., 708.343.8311
www.ChicagoClampCompany.com

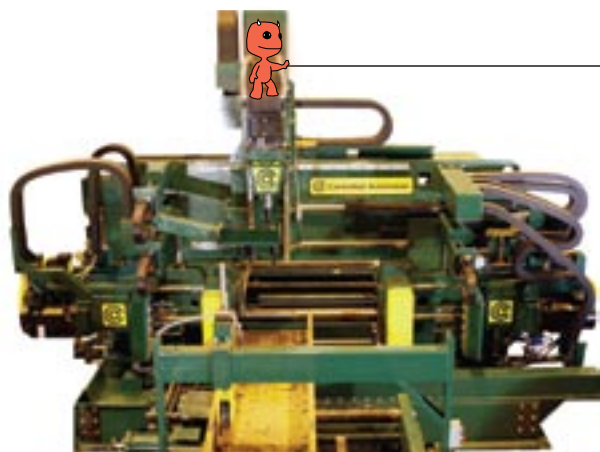


RAM Connection

RAM Connection now includes the AISC 341-05 *Seismic Provisions* for moment and braced frames and the latest steel standard provisions referenced by the 2006 IBC (AISC 360-05). The detailed DXFs are included for all connection types and even include the thorough reinforcement required for hollow structural sections (HSS) braces per the *Seismic Provisions*. The program's recent integration with ProSteel provides collaboration in steel detailing, allowing users to design connections in RAM Connection and utilize ProSteel for creation of the fabrication drawings. It also works seamlessly with RAM Structural System, Bentley Structure Elements (formerly RAM Advanse) and STAAD.Pro, eliminating manual input of analysis and design forces and load cases from a structure into one standalone connection program.

Contact: Bentley, 800.BENTLEY
www.Bentley.com/RAMConnection





DRL-348TC Drilling Line

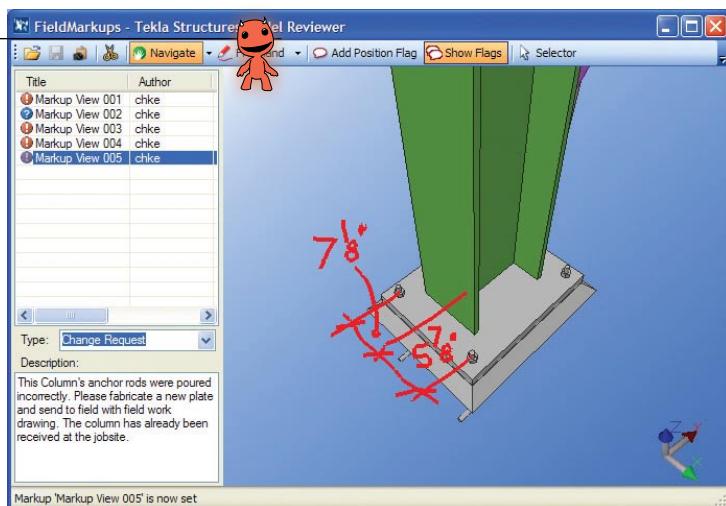
The DRL-348TC is a high-speed production drill line with a fully automated five-tool changer on each drill spindle axis. It has been designed to reduce operator error during production by allowing the machine to make any necessary changes in tooling size depending on the part being produced. With a maximum material width capacity of 48 in. combined with the 1,000-lb/ft conveyor system, the DRL-348TC can process anything from the smallest to the largest structural members.

Contact: Controlled Automation, 501.557.5109
www.controlledautomation.com

Tekla Structures Model Reviewer

The new Tekla Structures Model Reviewer, a free web-based tool, is now available. Tekla 3D models can now be downloaded and easily email redlined/commented back and forth for easier and more efficient project collaboration. The simple interface is designed so team members who have never used a CAD software can easily navigate and markup comments into the 3D model. With the Tekla Structures Model Reviewer you can:

- Easily pan, rotate, zoom, fly in the model
- Use mark-up view points to quickly present specific areas of the project or fly through a set of locations
- Create mark-ups with description and redlining
- Use clip planes to slice your project to provide perfect views of difficult areas
- Take snapshots from any angle of the model
- Change colors so that you can see structures

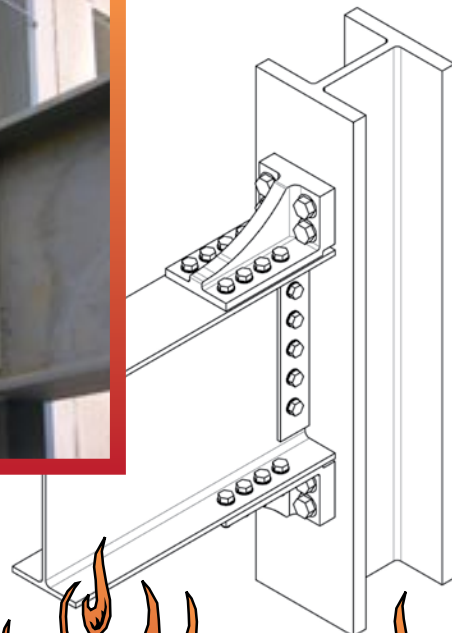


Contact: Tekla, 877.TEKLA.OK, www.tekla.com

Kaiser Bolted Bracket

Kaiser Bolted Brackets are pre-engineered and shop fillet welded to the beam then bolted to the column to eliminate all field welding. Since they are cast in U.S. foundries to stringent control standards, quality is less dependent on field work. The brackets allow the frame to perform as it was originally designed without changing frame stiffness. In retrofit projects, they can be used to repair part of a building or upgrade the entire structure by drilling and bolting in place to eliminate all welding. In addition, they are now prequalified in ANSI/AISC 358-05s1 *Prequalified Connections for Special and Intermediate Steel Moment Frames for Seismic Applications*. (Kaiser brackets will be the subject of an *Engineering Journal* article; see a description of the article in the News section on page xx.)

Contact: Steel Cast Connections, LLC, 206.250.7035
www.steelcastconnections.com





COMBI-CB Multi-Directional Lift

The new COMBI-CB offers a material-handling alternative to service centers and other facilities with large stockpiles of steel, who today may be using standard conventional counter-balance forklifts, reach trucks, side-loaders, or electric 4-way forklifts. With 6,000 lbs capacity and multi-directional ability, the COMBI-CB is available in LP gas, diesel, and electric units and can lift to heights up to 25 ft. The 55-in.-wide fork carriage with optional integrated Fork Positioner offers excellent support for handling long products. As there is no platform, goods can be stacked directly from the floor up, enabling 100% use of lower storage areas. The small physical compact size allows it to stuff and de-stuff containers and transport the pallets or long loads directly to the warehouse. The lift can operate in aisles as narrow as 75 in. regardless of the length of the load and, at the flick of a switch, can convert from forward drive to sideways mode; the ability to travel sideways allows the unit (and all of the manufacturer's lifts) to negotiate tight surroundings with long or awkward loads.

MSC

Contact: Combilift, 877.COMBI.56
www.combilift.com