

Each month MSC's product section features items from all areas of the steel construction industry. In general, these products have been introduced within the past six months. If you're looking for a specific product, visit MSC's online product directory at www.modernsteel.com/products. You can browse by product category or search on any term to help find the products you need, fast.

Flexible Neck Torches

For better joint access, Appleton, Wis.-based Weldcraft offers several TIG torches with flex-neck designs. The company's WP-9, WP-17 and WP-26 Series of air-cooled TIG torches all feature an optional 'F' or flex-neck model (e.g. WP-17F) for welding applications featuring limited joint access and/or difficult joint angles. Weldcraft also offers valved versions of each of these flex-neck torch models (e.g. WP-17FV) for use with power sources that do not have gas solenoids. The WP-9 torches are for welding thin gauge materials, up to ¼ in. WP-17 torches provide high-capacity performance on thin- to medium-gauge materials. The WP-26 torches are for use on heavy-duty continuous welding applications with limited joint access, and like the WP-9 and WP-17 models, are designed to adjust to any angle the welding operator needs.

For more information visit www.weldcraft.com or call 800.752.7620.



Weld While Off the Grid

The Trek 180 a self-contained battery-powered MIG welding package from Hobart Welding Products, Appleton, Wis., is a professional system offering true "off-the-grid" welding. The ultra-portable (52-lb.) Trek delivers heavy-duty weld power to fabricate or repair 24-gauge up to ¼-in.-mild steel in a single pass. Two internal, high-performance batteries enable the Trek to achieve a 100% charge in 90 minutes or a 20-minute, 80% quick charge from a standard 115V wall outlet or within a vehicle using an automotive power inverter (400 continuous watt minimum.)

The unit is designed to operate while plugged in or completely cordless. Its detachable power cord plugs into standard 115V receptacles.

When fully charged, the unit delivers approximately 100-in. of continuous weld bead using .030 dia. flux-cored wire on ¼-in. mild steel. Unlike other battery welders, battery power is monitored continuously to provide consistent welding voltage regardless of the charge level. The Trek's low battery shutdown feature disables the welder when the battery runs low, protecting the life of the battery and quality of weld output.

For more information, visit www.hobartwelders.com or call 877.462.2781.



Build-A-Boom Online Shopping

A new easy-to-navigate website from Richfield, Ohio-based ALT Sales Corp. includes a new Build-A-Boom service that helps buyers find the exact boom truck to serve their needs. Founded in 1964, ALT Sales Corp. is a stand-alone division of the ALL Family of Companies, but draws from the complementary resources and buying power of ALL Crane. ALT offers a selection of the world's best names in boom trucks for sale, rental, and leasing, including Manitowoc, National, and Terex.

For more information, visit www.altsales.com or call 330.659.2100.



All products submitted are considered for publication, and we encourage submittals related to all segments of the steel industry: engineering, detailing, fabrication, and erection. Submit product information via e-mail to Tom Klemens (klemens@modernsteel.com). To be included in MSC's online products directory, contact Louis Gurthet (gurthet@modernsteel.com).

Barcode-based System for Fabrication Job Costing

Dynamic Systems, Inc., Redmond, Wash., offers its CheckMate JobData for small to mid-sized fabricators who need a flexible, low-cost way to track labor and materials against jobs. The job costing software program is based on barcode technology allows the number of hours spent on a job to easily be broken down into tasks, employees or departments.

Each work-order is printed with a barcode identification number and each employee is assigned a barcoded badge. The work-order number and the badge are scanned using a barcode reader (either a scanner "corded" to a PC or a portable barcode terminal) as work begins on the job. When used in conjunction with the company's CheckMate Stockroom, full materials management is added to the data producing a high level bill of materials.

JobData enables the production manager to track the location of the workorder (job) within the manufacturing process, forecast finish dates, and identify any hold-ups or bottlenecks in the process. It also includes a time and attendance module.

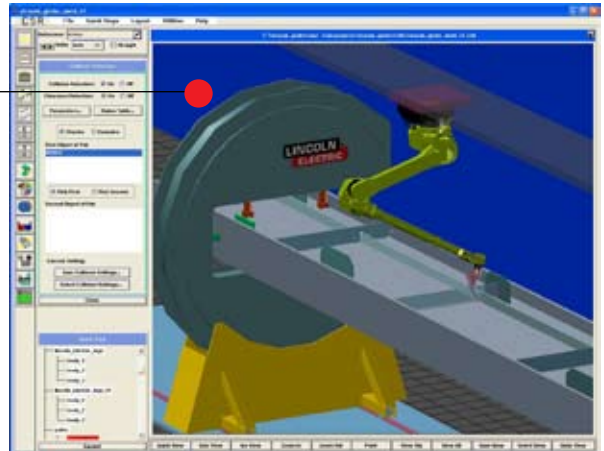
For more information, visit www.abarcode.com or call 800.342.3999.



Simulation Software for Fabricators

Lincoln Electric Automation and JITECH have announced a global product partnership agreement for the development of StruCIM, a powerful 3D simulation software system. StruCIM is designed to allow fabricators to quickly simulate and evaluate alternative methods for the automation of modern steel fabrication operations. StruCIM is a licensed trademark of JITECH Fabrication Technologies, Montreal, Quebec, Canada. Lincoln Electric Automation is a division of The Lincoln Electric Company, Cleveland, Ohio.

The agility, mobility and flexibility of robotic operations, paired with StruCIM technology, will seamlessly enable the coordination of several currently discrete operations, including cutting, coping, layout marking and welding. Using these systems, the fabrication of each individual part can be fully programmed from start to finish. These solutions will provide the structural steel fabrication industry with unprecedented automated programming and fabrication capability.



For more information, visit www.lincolnelectric.com/automated-solutions/ or call 888.935.3878.

Improved Welding Gun

Bernard Welding Equipment, Beecher, Ill., has made several improvements to its popular Dura-Flux self-shielded flux-cored welding gun. The company now offers six different cable lengths (8 ft–25 ft) and a choice between a small trigger guard and a large heat shield. The small trigger guard provides increased maneuverability and access to tight weld joints, whereas the large heat shield increases operator comfort by blocking radiant heat from the welding arc.

Bernard also offers an optional heavy-duty contact tip insulator that will be included along with the standard insulator on all new gun purchases. The heavy-duty insulator has a thicker wall above the base of the tip and is longer than the standard insulator, providing increased heat resistance and allowing a shorter contact tip stickout to prevent arc-out against the side walls of deep joints.

The Dura-Flux also offers direct plugs for Miller, Lincoln, Euro and Tweco four-wire feeders, allowing its use with all the major wire feeders commonly used in self-shielded flux-cored applications.

For more information, visit www.bernardwelds.com or call 800.946.2281.

