

PEDDINGHAUS HSFDB-2500/C

Peddinghaus' HSFDB-2500/C features oxy-fuel and plasma bevel cutting systems; a 48-hp (36-kW) Siemens spindle motor; the Roller Feed measurement system for continuous feed production; a 12-station automatic tool changer; the Minimum Quantity Lubrication (MQL) system; the SignoMat part stamping system; and edge start cutting and common cutline/chain cutting capabilities. It yields scrap loads as low as 5% in common structural applications and features an automated unloading system for streamlined removal of completed parts.

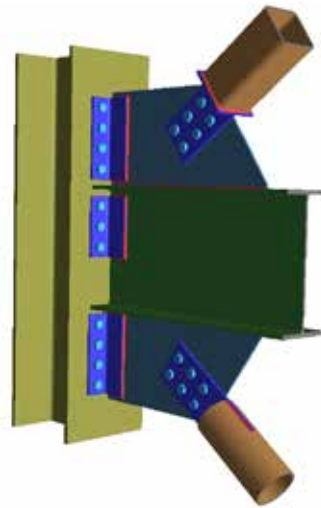
For more information, visit www.peddinghaus.com or call 815.278.0742.



RISACONNECTION

In recent years there has been a strong demand by engineers for software to make the design of HSS connections easier. RISA has responded to that demand by adding a number of HSS connections to the growing libraries of RISACONNECTION. By using a variety of resources including AISC 360 (14th Edition *Steel Manual*), AISC Design Guide 24 and the CIDECT guides, RISACONNECTION makes designing HSS connections easy for all engineers.

For more information, visit www.risatech.com or call 800.332.RISA.



FICEP HP 35-T HIGH SPEED ANGLE DRILL LINE

The NEW HP 35-T High Speed Angle Drill Line from Ficep is available with two 30-hp drill spindles that have the unique ability to operate simultaneously and independently on different centerlines without the requirement to reposition the angle. The industry's first 5,000-rpm spindle speed lets it take full advantage of carbide tooling, and it can process fabricated angle legs up to 14 in.

This unique new product features full milling capability with independent spindles for slots or heel milling, hard stamp marking (programmable or multiple fixed character) and part scribing, all with rack and pinion positioning for the best accuracy possible. Cut-off options include shearing, band sawing or new circular carbide sawing technology (8 in. x 8 in. x 1 in. in 12 seconds). This angle processing center is available with a full range of loading and unloading systems for full automation without direct operator involvement.

For more information, visit www.ficepcorp.com or call 410.588.5800.

