



**PRIZE BRIDGES 1961**

# Prize Bridges 1961

Steel bridges selected in the annual national competition conducted by the American Institute of Steel Construction as the most beautiful bridges opened to traffic in 1961.

AMERICAN INSTITUTE OF STEEL CONSTRUCTION, INC.  
101 Park Avenue, New York 17, N. Y.

## **Jury of Award**

**H. HARVARD ARNASON**

Vice President for Art Administration  
The Solomon R. Guggenheim Museum  
New York City, New York

**CHARLES R. COLBERT**

Dean  
School of Architecture  
Columbia University  
New York City, New York

**G. BROOKS EARNEST**

President  
American Society of Civil Engineers  
Fenn College  
Cleveland, Ohio

**LUTHER LASHMIT**

Lashmit, James, Brown & Pollock  
Winston-Salem, North Carolina

**EDWARD W. TANNER**

Tanner, Linscott & Associates, Inc.  
Kansas City, Missouri



## Beauty in Steel Bridges

The enduring beauty of steel bridges is eloquent tribute to the vision and skill of the men who plan, design and build them. The bridge designer of today is both artist and engineer. He understands the potential for strength and beauty which is inherent in steel structures, and he knows that aesthetic appearance can be achieved at no sacrifice of efficiency or economy. The simple grace of a highway overpass, no less than the majestic sweep of a river crossing reflects a creative integration of structure, function and form, skillfully executed in beautiful bridges of steel.

To promote a more widespread appreciation of the aesthetics of steel bridges and to honor the architectural excellence of modern bridge design, the American Institute of Steel Construction sponsors an annual Prize Bridge Competition. Each year a distinguished Jury of Award, composed of leading art directors, architects and engineers, selects the steel bridges which it judges to be the most beautiful of those opened to traffic in the United States during the previous year.

To establish an equitable basis for competition, awards are made in each of four contest classifications. Size, cost and operating conditions determine the class in which each entry is eligible to compete. The prize winning bridges are marked with a stainless steel plaque, and the designers, owners and steel fabricators are awarded engraved certificates in recognition of their contribution and achievement.

The American Institute of Steel Construction sponsors this competition and awards the prizes in the belief that it is helping to render a public service by stimulating a deep and lasting interest in improved bridge design. Since 1957 the Institute has recorded the prize bridges for each year in a single volume. Previous winners, covering the period 1928-56, are pictured and described in the booklet "Prize Bridges Through the Years," available from the Institute upon request.



**LONG SPAN**



**PRIZE BRIDGE**

bridges with spans 400 feet or more





### **SHERMAN MINTON BRIDGE**

Highway I-64, Crossing the Ohio River  
Between New Albany, Indiana and Louisville, Kentucky  
OWNER: Indiana State Highway Commission and  
Kentucky Department of Highways

DESIGNER: Hazelet and Erdal

FABRICATOR: The R. C. Mahon Company

## AWARD OF MERIT



### **RANDOLPH BRIDGE**

Over Tuttle Creek Reservoir

Riley County, Kansas

OWNER: State Highway Commission of Kansas

DESIGNER: Bridge Department, State Highway  
Commission of Kansas

FABRICATOR: Darby Corporation



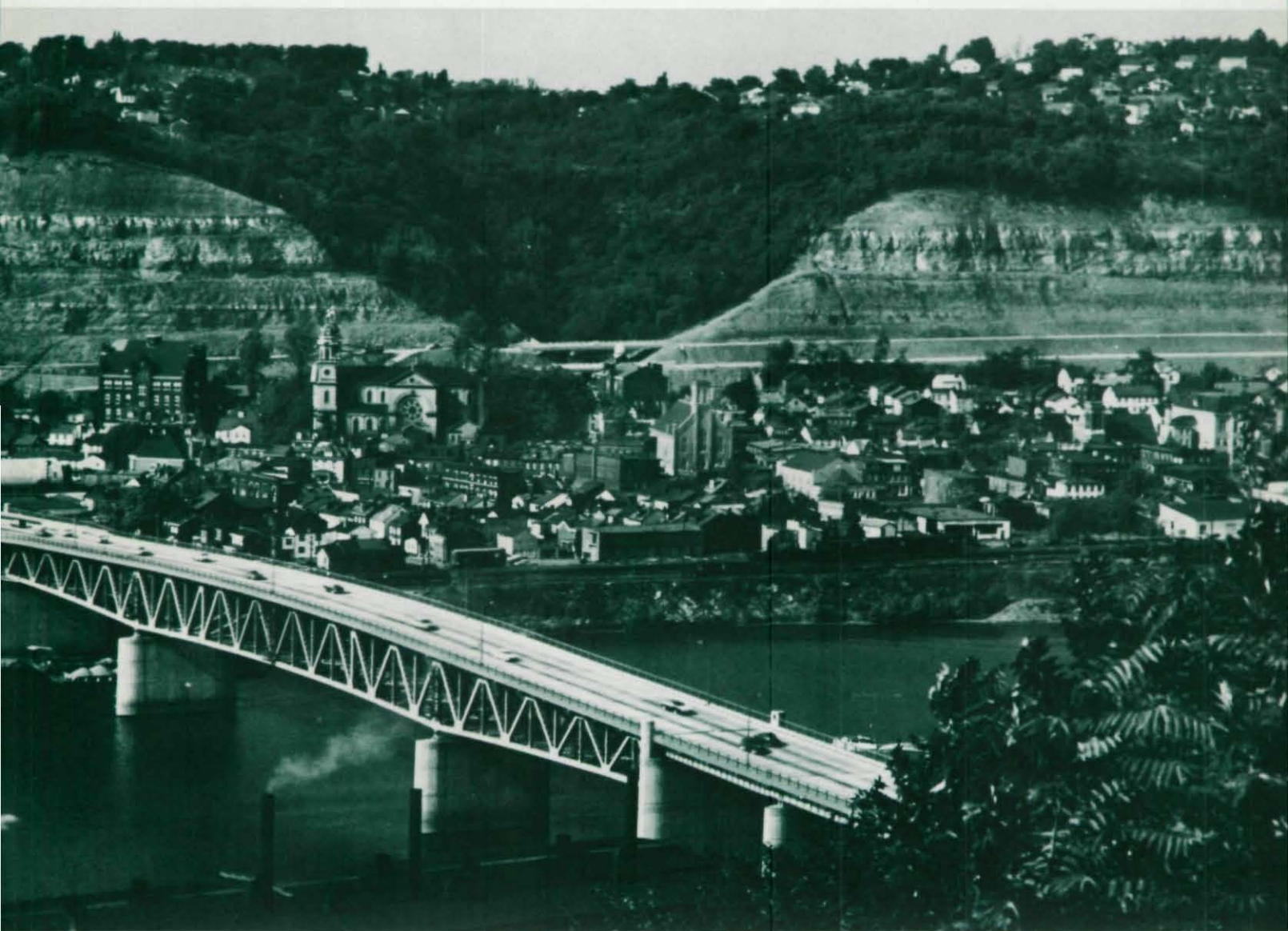


**MEDIUM SPAN**



**PRIZE BRIDGE**

bridges with fixed spans under 400 feet and costing more than \$500,000



### **NEW SIXTY-SECOND STREET BRIDGE**

Pittsburgh, Pennsylvania

OWNER: State Highway Department, Commonwealth of Pennsylvania

DESIGNER: Parsons, Brinckerhoff, Quade & Douglas

FABRICATOR: American Bridge Division, United States Steel Corporation



**SHORT SPAN**



**PRIZE BRIDGE**

bridges with spans under 400 feet and costing under \$500,000



**AWARDS OF MERIT**



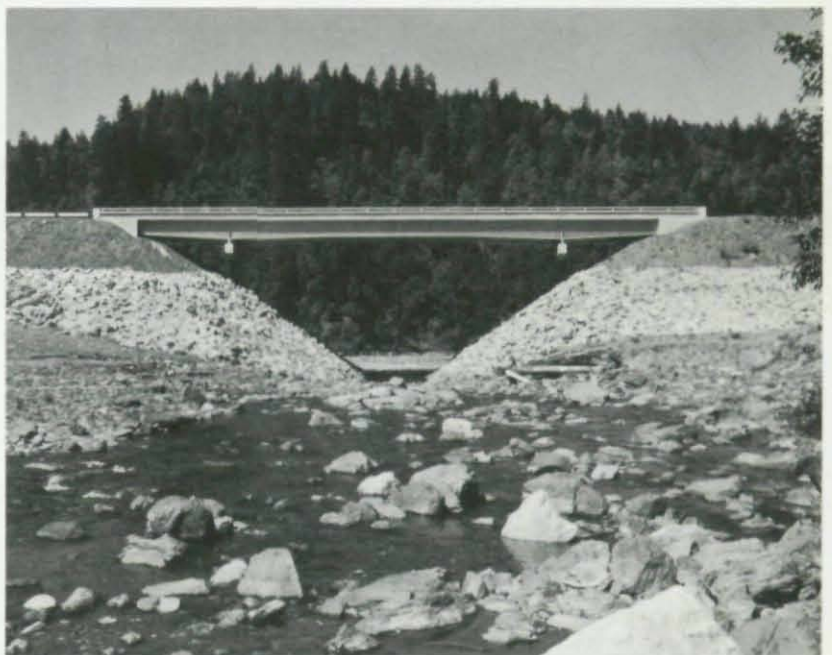
**PECWAN RIVER BRIDGE**

Weitch Peck, California

OWNER: State of California

DESIGNER: State of California

FABRICATOR: American Bridge Division,  
United States Steel Corporation



000386

## SKYKOMISH RIVER BRIDGE

Sultan, Washington

OWNER: Snohomish County

DESIGNER: Harry R. Powell & Associates

FABRICATOR: United Concrete Pipe



## SOUTH POND BRIDGE

Lincoln Park, Chicago, Illinois

OWNER: Chicago Park District

DESIGNER: Engineering Department,  
Chicago Park District

FABRICATOR: Vierling Steel Works





AMERICAN INSTITUTE OF STEEL CONSTRUCTION, INC.  
101 Park Avenue, New York 17, N. Y.