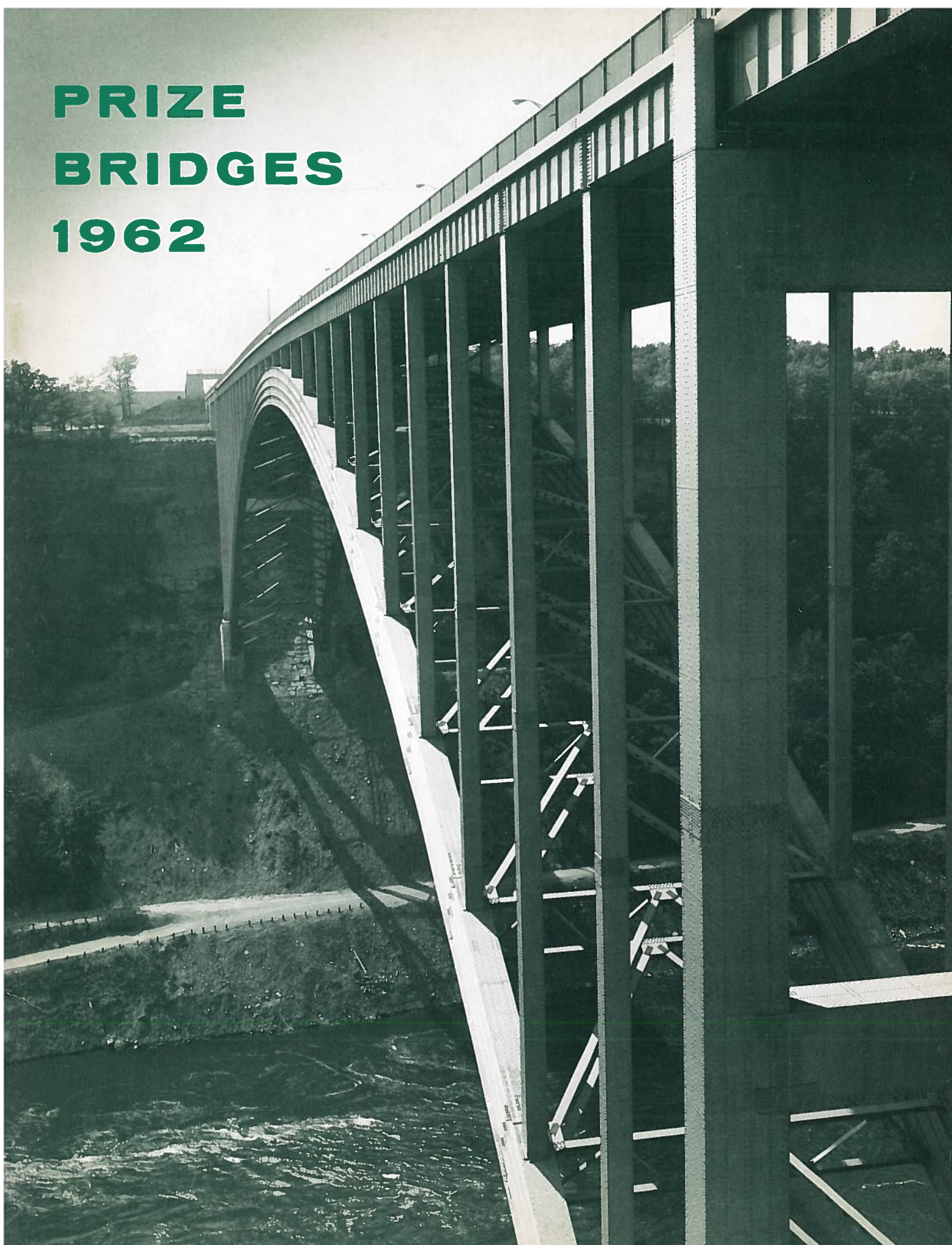


**PRIZE  
BRIDGES  
1962**





# **Prize Bridges 1962**

Steel bridges selected in the annual national competition conducted by the American Institute of Steel Construction as the most beautiful bridges opened to traffic in 1962.

AMERICAN INSTITUTE OF STEEL CONSTRUCTION, INC.  
101 Park Avenue, New York 17, N. Y.

# Jury of Awards

**WILLIAM J. H. HOUGH**  
Harbeson, Hough, Livingston and Larson  
Philadelphia, Pennsylvania

**THOMAS C. KAVANAGH**  
Praeger-Kavanagh-Waterbury  
New York City

**HARRY R. POWELL**  
Harry R. Powell and Associates  
Seattle, Washington

**MICHAEL RAPUANO**  
Clarke and Rapuano, Inc.  
New York City

**PERRY RATHBONE**  
Museum of Fine Arts  
Boston, Massachusetts

# Beauty in Steel Bridges

The enduring beauty of steel bridges is eloquent tribute to the vision and skill of the men who plan, design and build them. The bridge designer of today is both artist and engineer. He understands the potential for strength and beauty which is inherent in steel structures, and he knows that aesthetic appearance can be achieved at no sacrifice of efficiency or economy. The simple grace of a highway overpass, no less than the majestic sweep of a river crossing reflects a creative integration of structure, function and form, skillfully executed in beautiful bridges of steel.

To promote a more widespread appreciation of the aesthetics of steel bridges and to honor the architectural excellence of modern bridge design, the American Institute of Steel Construction sponsors an annual Prize Bridge Competition. Each year a distinguished Jury of Awards composed of leading art directors, architects and engineers, selects the steel bridges which it judges to be the most beautiful of those opened to traffic in the United States during the previous year.

To establish an equitable basis for competition, awards are made in each of four contest classifications. Size, cost and operating conditions determine the class in which each entry is eligible to compete. The prize winning bridges are marked with a stainless steel plaque, and the designers, owners and steel fabricators are awarded engraved certificates in recognition of their contribution and achievement.

The American Institute of Steel Construction sponsors this competition and awards the prizes in the belief that it is helping to render a public service by stimulating a deep and lasting interest in improved bridge design. Since 1957 the Institute has recorded the prize bridges for each year in a single volume. Previous winners, covering the period 1928-56, are pictured and described in the booklet "Prize Bridges Through the Years," available from the Institute upon request.





FIRST AWARD OF  MERIT

## **Cart Creek Bridge**

Daggett County, Northeastern Utah

**OWNER:** Utah State Department  
of Highways

**DESIGNER:** Structures Division,  
Utah State Department  
of Highways

**FABRICATOR:** American Bridge Division,  
U. S. Steel Corporation





# LONG SPAN PRIZE BRIDGE

for bridges with spans 400 feet or more

## Lewiston-Queenston Bridge

Niagara River between Lewiston, New York  
and Queenston, Ontario

**OWNER:** Niagara Falls Bridge Commission

**DESIGNERS:** Hardesty & Hanover

**FABRICATOR:** Bethlehem Steel Company

## AWARD OF MERIT

### Flaming Gorge Reservoir Bridge (pipeline)

Green River, Wyoming

**OWNER:** El Paso Natural Gas Company

**DESIGNERS:** Matthews, Kenan and Edens

**FABRICATOR:** Allison Steel Manufacturing Company





# MEDIUM SPAN PRIZE BRIDGE

for bridges with fixed spans under 400 feet and costing more than \$500,000

## George J. Cole Memorial Bridge

South Fork Eel River at Myers Flat,  
Humboldt County, California

**OWNER:** State of California

**DESIGNER:** State of California

**FABRICATOR:** Independent Iron Works

## FIRST AWARD OF MERIT

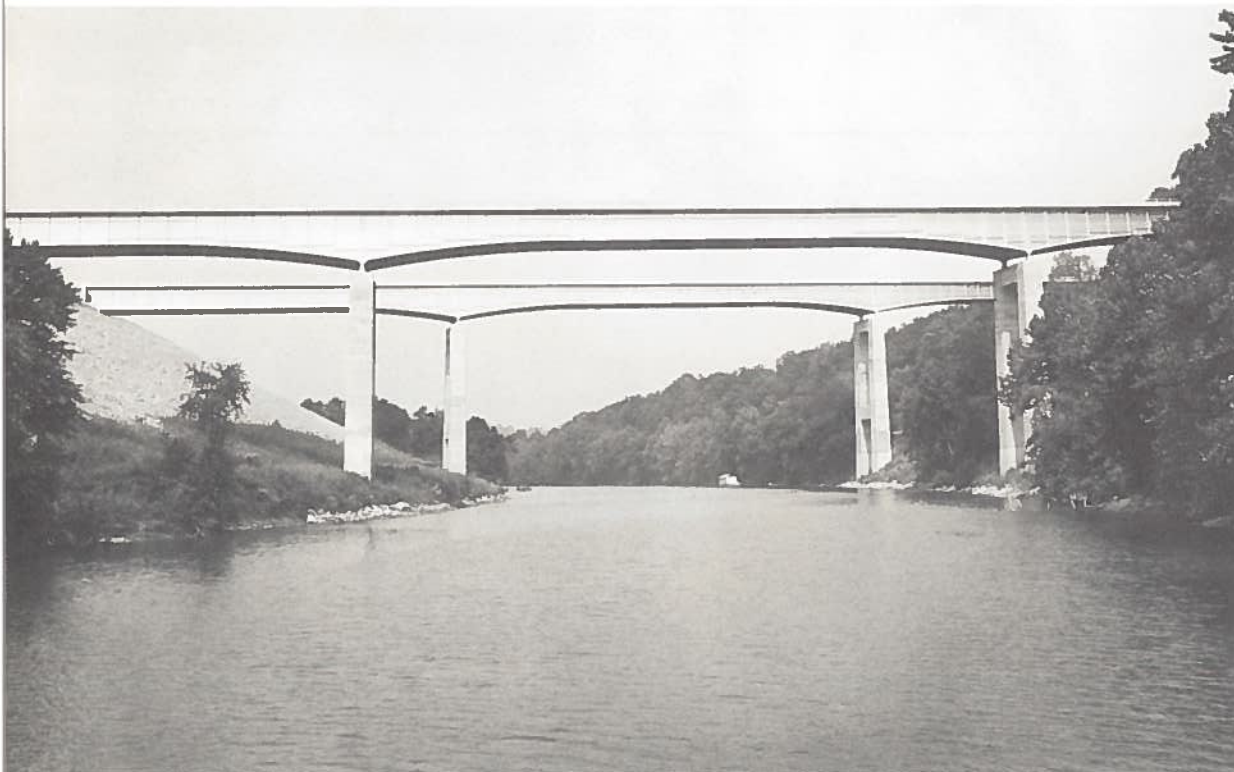
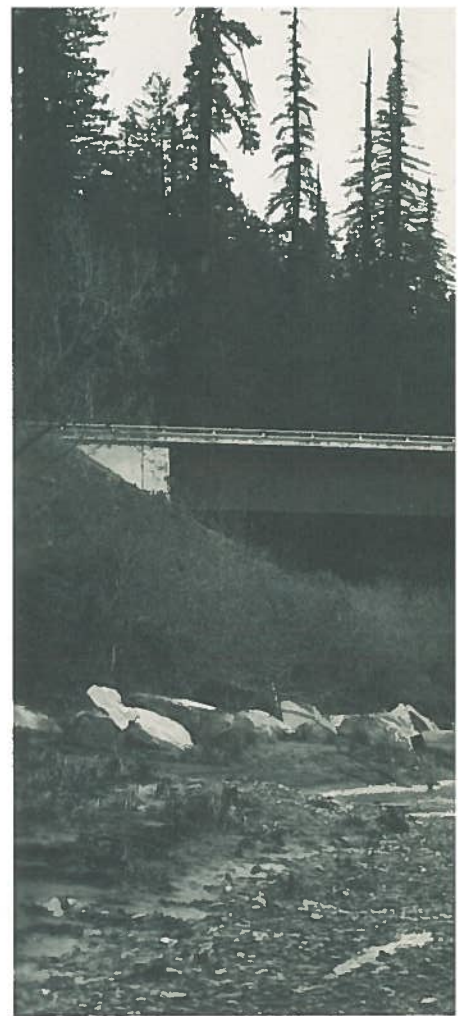
### Interstate 64 Bridge

Frankfort, Kentucky

**OWNER:** Commonwealth of Kentucky

**DESIGNER:** Division of Bridges,  
Kentucky Department of Highways

**FABRICATOR:** American Bridge Division,  
U. S. Steel Corporation







**AWARD OF MERIT**

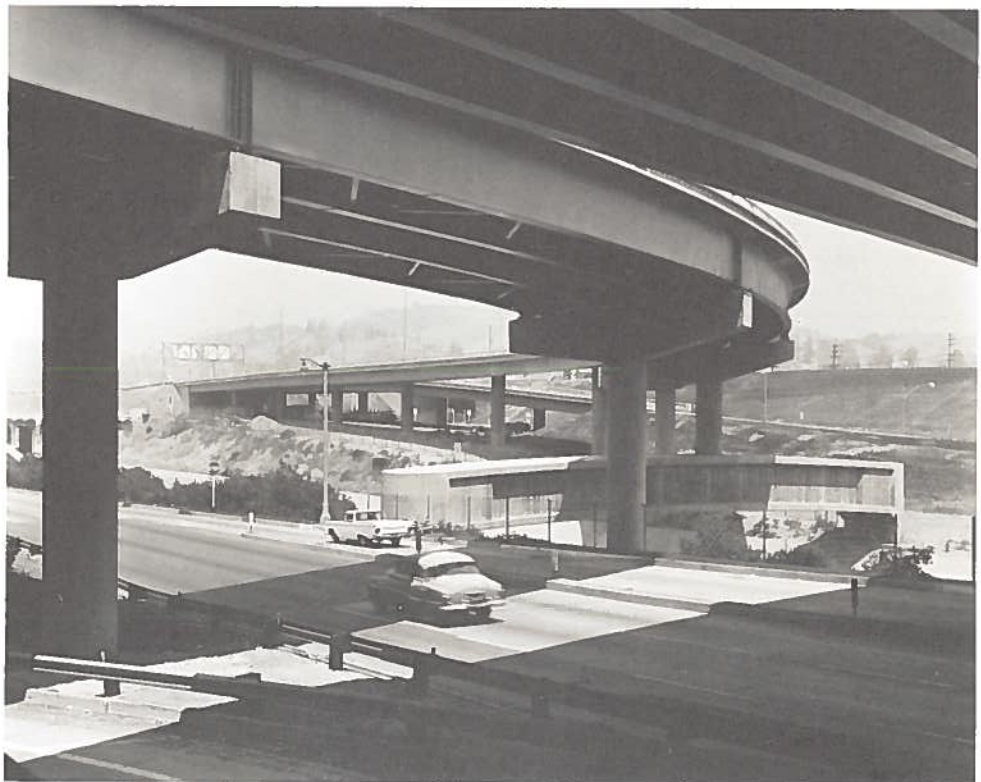
**Olysan Viaduct Bridge**

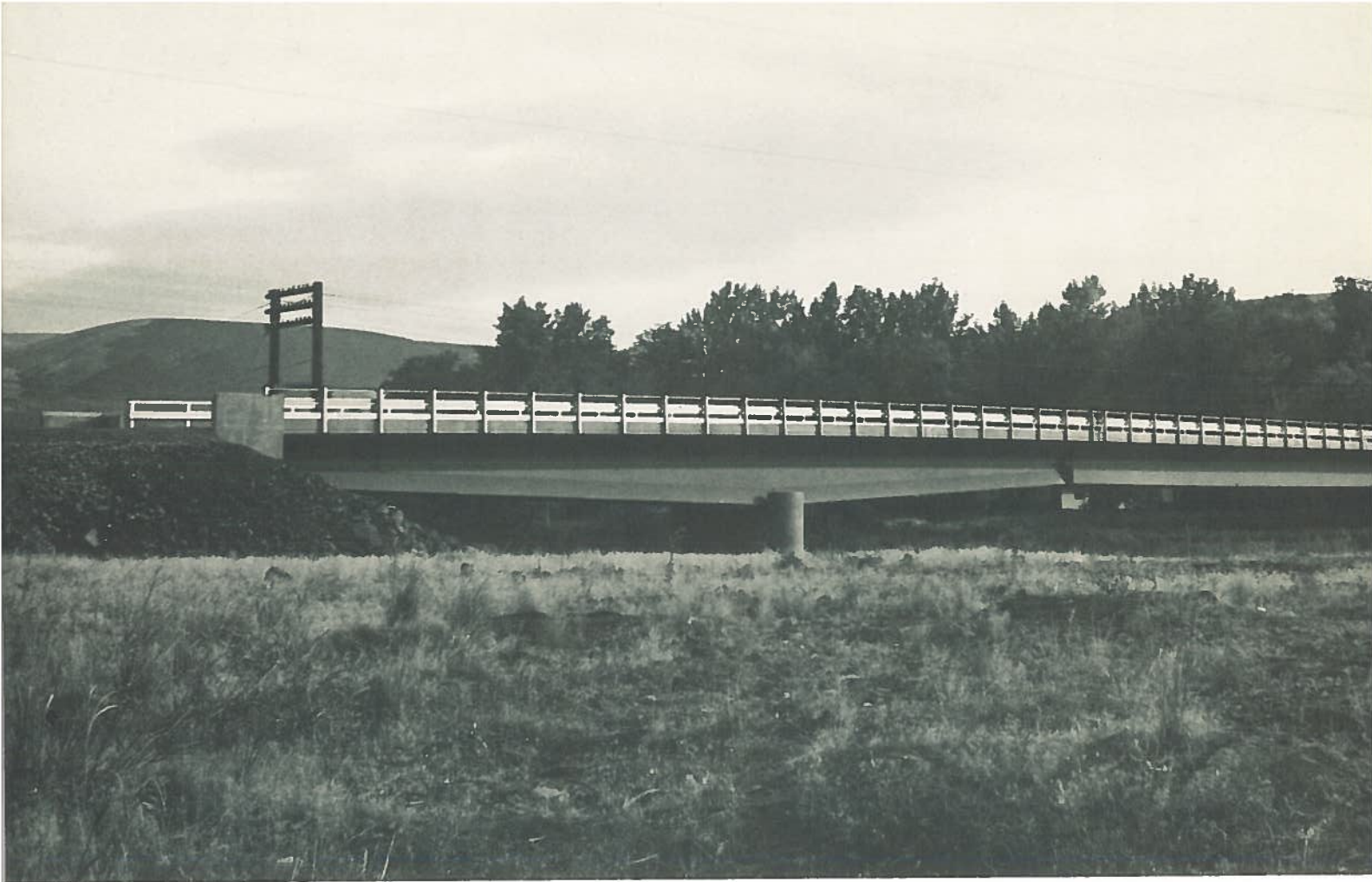
Los Angeles, California

**OWNER:** State of California

**DESIGNER:** State of California

**MANUFACTURER:** Kaiser Steel Corporation





 AWARD OF MERIT

**Howard Griffin Memorial Bridge**

Middle Fork Smith River, Crescent City, California

**OWNER:** State of California

**DESIGNER:** State of California

**FABRICATOR:** Vinnell Steel Company





# SHORT SPAN PRIZE BRIDGE

for bridges with fixed spans costing less than \$500,000

## Parker Bridge

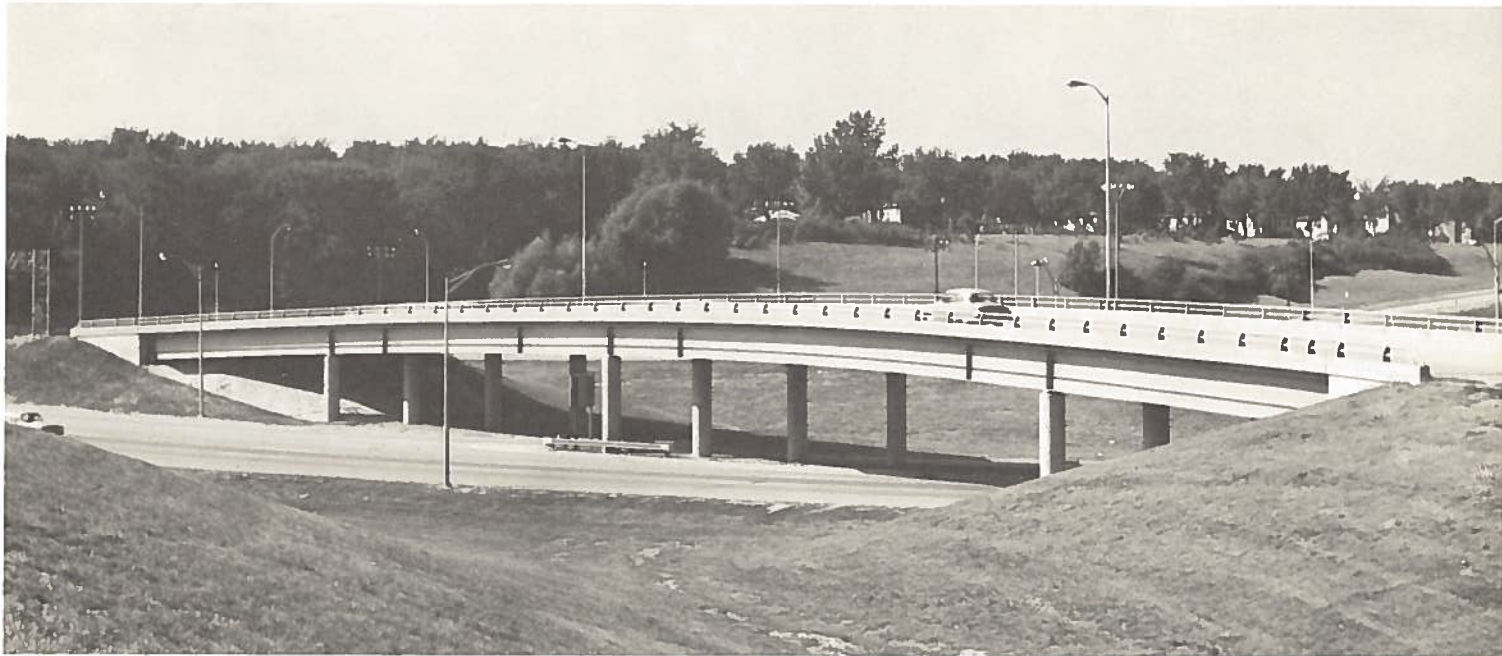
Yakima County, Washington

**OWNER:** Yakima County

**DESIGNER:** Homer M. Hadley, Consulting Engineer

**FABRICATOR:** United Concrete Pipe Company

FIRST AWARD OF  MERIT



## South-to-West Ramp Milwaukee Stadium Interchange

Milwaukee, Wisconsin

**OWNERS:** Milwaukee County Expressway Commission  
and Wisconsin State Highway Commission

**DESIGNERS:** Howard, Needles, Tammen & Bergendoff

**FABRICATOR:** C. Hennecke Company



# MOVEABLE SPAN PRIZE BRIDGE



## **Georgiana Slough Bridge**

Walnut Grove, California

**OWNER:** Sacramento County, California

**DESIGNER:** Sacramento County, California

**FABRICATOR:** Kaiser Steel Corporation

## **Bridge over Southern Branch of the Elizabeth River**

About 3 miles south of Norfolk, Norfolk County, Virginia

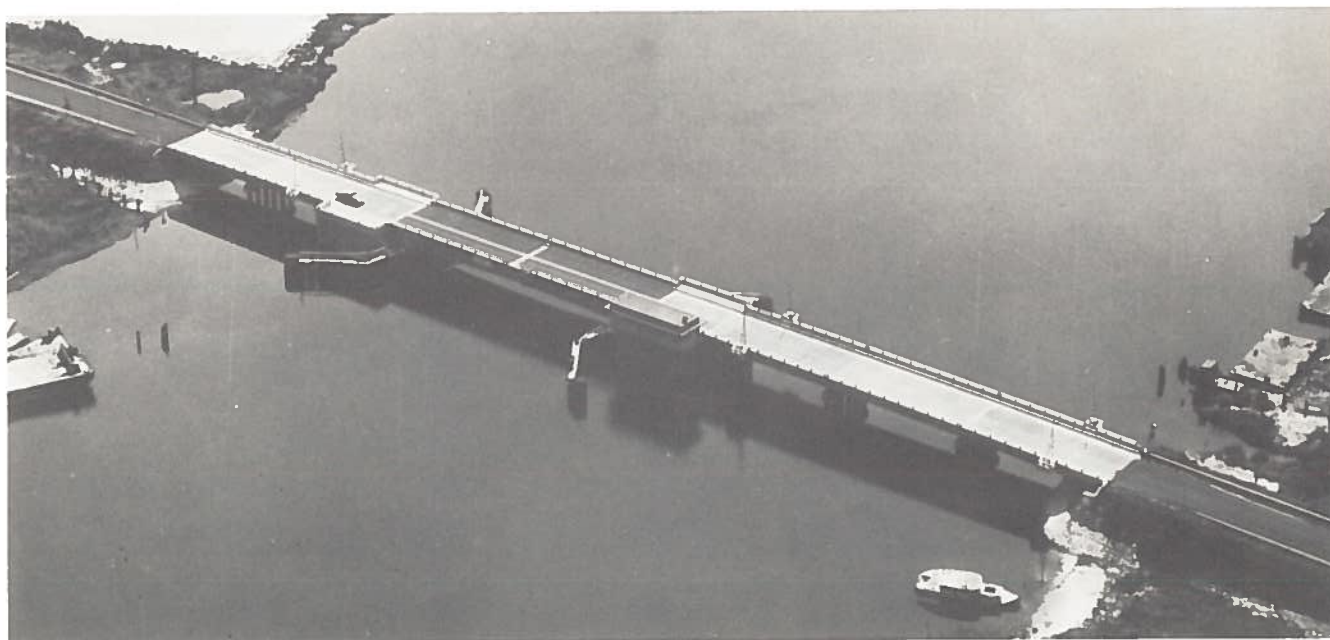
**OWNER:** Commonwealth of Virginia

Department of Highways, Richmond, Virginia

**DESIGNERS:** Hardesty & Hanover

**FABRICATOR:** American Bridge Division, U. S. Steel Corporation

FIRST AWARD OF  MERIT



# TOP AWARD WINNERS SINCE 1928

	CLASS I	CLASS II	CLASS III	CLASS IV
1961	Sherman Minton Bridge New Albany, Indiana and Louisville, Kentucky	New Sixty-Second Street Bridge Pittsburgh, Pennsylvania	Skykomish River Bridge Sultan, Washington	
1960	Summit Bridge Summit, Delaware	Roosevelt Boulevard Bridges Philadelphia, Pennsylvania	Cemetery Access Bridge Milwaukee, Wisconsin	Rio Vista Bridge Rio Vista, California
1959	Glen Canyon Bridge Page, Arizona	Huasna River Bridge Santa Maria, California	Modrow Bridge Cowlitz County, Washington	Grant Line Canal Bridge Stockton-Tracy, California
1958	Mackinac Bridge Mackinac Straits, Michigan	Louis Morris Memorial Bridge Hartnell, Georgia	Norwood Bridges Norwood, Massachusetts	
1957	Walt Whitman Bridge Philadelphia, Pennsylvania	General James Longstreet Memorial Bridge Gainesville, Georgia	Hampton Road Overpass Dallas-Ft. Worth Turnpike Dallas, Texas	Madison-Monroe Street Bridge Two Rivers, Wisconsin
1956	Missouri River Pipeline Suspension Bridge Plattsmouth, Nebraska	Buffalo Bayou Bridges Houston, Texas	Allegheny River Bridge Salamanca, New York	
1955	Leavenworth Centennial Bridge Leavenworth, Kansas	Cuyahoga River Bridge Ohio Turnpike, Ohio	Old State Route 8 Bridge Ohio Turnpike, Ohio	Welfare Island Bridge New York, New York
1954	Missouri River Bridge Kansas City, Missouri	Little Chute-Kimberly Combined Locks Bridge Outagamie County, Wisconsin	Garrison School Pedestrian Bridge Kansas City, Missouri	
1953		Ninth and Tenth Street Connections San Francisco, California	Robert Street Underpass Fort Worth, Texas	New York Central Railroad Bridge Cleveland, Ohio
1952		Neches River Bridge Beaumont, Texas	Morris Ferry Bridge Franklin County, Tennessee	S. E. Fourth Avenue Bridge Miami, Florida
1951	Delaware Memorial Bridge Wilmington, Delaware	Forebay Channel Bridge Arizona-Nevada	Grove Street Overpass Lexington, Massachusetts	Harlem River Pedestrian Bridge New York, New York
1950	Columbia River Bridge Wenatchee, Washington	South Holston River Bridge Tennessee State Highway, Tennessee	Caldwell Avenue Bridge Cook County, Illinois	
1949	North Main Street High Level Bridge Akron, Ohio	Pinto Creek Bridge Superior, Arizona	Tenth Street Bridge Atlanta, Georgia	Passaic River Bridge Rutherford, New Jersey
1948	Watuaga River Bridge Carter County, Tennessee		Airport Apron Overpass New York International Airways	
1947		Saco River Bridge Maine Turnpike, Maine	Old Alfred Road Underpass Maine Turnpike, Maine	
1946				Absecon Boulevard Bridge Atlantic City, New Jersey
1945			Fontana Access Bridge Little Tennessee River	President Harry S. Truman Bridge Kansas City, Missouri

## TOP AWARD WINNERS SINCE 1928 (Continued)

	CLASS I	CLASS II	CLASS III	CLASS IV
1944		Pecos River Bridge High Bridge, Texas		
1943	Julien Dubuque Mississippi River Bridge Dubuque, Iowa & East Dubuque, Illinois			
1942		Charter Oak Bridge Hartford & East Hartford, Connecticut	Martin Interchange Bridge Middle River, Maryland	
1941	Rainbow Bridge Niagara Falls, New York & Niagara Falls, Ontario		Fairmount Boulevard Bridge Hunting Valley Village, Cuyahoga County, Ohio	Passaic River Bridge Newark & Kearney, New Jersey
1940	Susquehanna River Bridge Havre de Grace, Maryland	Dunnings Creek Bridge Bedford Township, Pennsylvania	Klamath River Bridge Orleans, Humboldt County, California	Oceanic Bridge Locust Point & Rumson, New Jersey
1939	Bronx-Whitestone Bridge New York, New York		Valley River Foot Bridge Murphy, North Carolina	Second Avenue Bridge Alpena, Michigan
1938	Middletown-Portland Bridge Middletown, Connecticut	Capital Bridge Frankfort, Kentucky	Middle Fork of Flathead River Bridge Belton, Montana	Lafayette Avenue Bridge, East Channel Saginaw River Bay City, Michigan
1937	Golden Gate Bridge San Francisco, California	Little Hell Gate, Low Level Bridge Randall's Island & Ward's Island, New York, New York	Chesterfield-Brattleboro Bridge New Hampshire & Vermont	Marine Parkway Bridge New York, New York
1936	East River Crossing, The Triborough Bridge New York, New York	Hurricane Deeck Bridge Camden County, Missouri	Astoria Boulevard Over Grand Central Parkway Extension New York, New York	
1935	North Grand Island Bridge Niagara Falls, New York	Lorain Road Viaduct Cleveland, Ohio	Mortimer E. Cooley Bridge Wellston, Michigan	
1934	Bourne Bridge Bourne, Massachusetts		Douglas County Bridge Nebraska	
1933	Cedar Street Bridge Peoria, Illinois	Shark River Bridge Avon, New Jersey	Dr. John D. McLoughlin Bridge Clackamas County, Oregon	
1932	Pulaski Skyway Hudson County, New Jersey	French King Bridge Erving, Massachusetts	Bryan Bridge Valentine, Nebraska	
1931	Bayonne Bridge Bayonne, New Jersey Staten Island, New York	Waldo-Hancock Suspension Bridge Bucksport, Maine	West Stewartstown Bridge West Stewartstown, New Hampshire	
1930	Wabash Avenue Bridge Chicago, Illinois		Delton Bridge Delton, Wisconsin	
1929	Mount Hope Bridge Portsmouth, Rhode Island	Mount Pleasant Bridge Mt. Pleasant, New York		
1928	Sixth Street Bridge Pittsburgh, Pennsylvania			

Contest entry rules and requirements are available upon request from the American Institute of Steel Construction.







AMERICAN INSTITUTE OF STEEL CONSTRUCTION, INC.  
101 Park Avenue, New York 17, N. Y.