



PRIZE BRIDGES 1965

## **AWARD CATEGORIES**

### **LONG SPAN BRIDGES**

Bridges having one or more spans of over 400 ft in length.

### **MEDIUM SPAN BRIDGES, LOW CLEARANCE**

Bridges having vertical clearances of less than 35 ft, costing over \$500,000 and having no single span (as measured by the supporting foundations) longer than 400 ft in length.

### **MEDIUM SPAN BRIDGES, HIGH CLEARANCE**

Bridges with vertical clearances of 35 ft or more, costing over \$500,000, and having no single span (as measured by the supporting foundations) longer than 400 ft in length.

### **SHORT SPAN BRIDGES**

Bridges having fixed spans and costing less than \$500,000.

### **HIGHWAY GRADE SEPARATION BRIDGES**

Bridges whose basic purpose is highway grade separation as contrasted to the above categories.

## **FRONT COVER**

The Verrazano-Narrows Bridge at sunset.

This graceful structure, spanning the entrance to New York harbor from Brooklyn to Staten Island, has been granted a special AISC award in tribute to its outstanding beauty and the excellence of its design.  
(See *inside back cover*)

Photo courtesy of Triborough Bridge and Tunnel Authority.

# PRIZE BRIDGES OF 1965

Steel bridges selected in the annual national competition conducted by the American Institute of Steel Construction as the most beautiful bridges opened to traffic in 1964.

AMERICAN INSTITUTE OF STEEL CONSTRUCTION, INC.  
101 Park Avenue, New York, N. Y. 10017

# J U R Y   O F   A W A R D S



**MILTON BRUMER**  
Partner, Amman & Whitney  
New York, New York



**ROBERT J. HANSEN**  
Professor of Structural Engineering  
Massachusetts Institute of Technology  
Cambridge, Massachusetts



**WILLIAM J. HEDLEY**  
President, American Society of Civil Engineers  
Asst. Vice President, Norfolk and Western Railway Corp.  
St. Louis, Missouri



**ALLAN McNAB**  
Director of Administration  
The Art Institute of Chicago  
Chicago, Illinois



**MAX O. URBAHN, AIA**  
President, New York City Chapter AIA  
Principal, Office of Max O. Urbahn, Architect  
New York, New York



# BEAUTY IN STEEL BRIDGES

The enduring beauty of steel bridges is eloquent tribute to the vision and skill of the men who plan, design and build them. The bridge designer of today is both artist and engineer. He understands the potential for strength and beauty which is inherent in steel structures, and he knows that aesthetic appearance can be achieved at no sacrifice of efficiency or economy. The simple grace of a highway overpass, no less than the majestic sweep of a river crossing, reflects a creative integration of structure, function and form, skillfully executed in beautiful bridges of steel.

To promote a more widespread appreciation of the aesthetics of steel bridges and to honor the architectural excellence of modern bridge design, the American Institute of Steel Construction sponsors an annual Prize Bridge Competition. Each year a distinguished Jury of Awards composed of leading art directors, architects and engineers, selects the steel bridges which it judges to be the most beautiful of those opened to traffic in the United States during the previous year.

To establish an equitable basis for competition, awards are made in each of several contest classifications. Size, cost and operating conditions determine the class in which each entry is eligible to compete. The prize winning bridges are marked with a stainless steel plaque, and the designers, owners and steel fabricators are awarded engraved certificates in recognition of their contribution and achievement.

The American Institute of Steel Construction sponsors this competition and awards the prizes in the belief that it is helping to render a public service by stimulating a deep and lasting interest in improved bridge design. Since 1957 the Institute has recorded the prize bridges for each year in a single volume. Previous winners, covering the period 1928-56, are pictured and described in the booklet "Prize Bridges through the Years," available from the Institute upon request.



PRIZE BRIDGE 1965

## ROBERT MOSES BRIDGE

## LONG SPAN

## DESIGNER

Modjeski and Masters, Harrisburg, Pennsylvania

## OWNER

Jones Beach State Parkway Authority, Babylon, New York

## GENERAL CONTRACTOR

Karl Koch Erecting Co., Inc., Bronx, New York

## FABRICATOR

Fort Pitt Bridge Works, Canonsburg, Pennsylvania

## JURORS' COMMENT:

*"Handled with a great deal of sensitivity in design. The arch shape truss design provides a focal point near the center of the bridge and seems fitting for that span length. Its lines are pleasing. The approaches are simple, ribbed and light. It looks solid and strong and very convincing, very straightforward. It is not dressed up to look like something it isn't. It is graceful and functional . . . a part of today's art. The railings allow visibility while driving over the bridge. All in all, it is a very pleasing design."*



PRIZE BRIDGE 1965

T O M P K I N S   S T R E E T   B R I D G E

MEDIUM SPAN, LOW CLEARANCE

DESIGNER

New York State Dept. of Public Works, Albany, New York

OWNER

State of New York, Albany, New York

GENERAL CONTRACTOR

S. J. Groves & Son Co., North Syracuse, New York

FABRICATOR

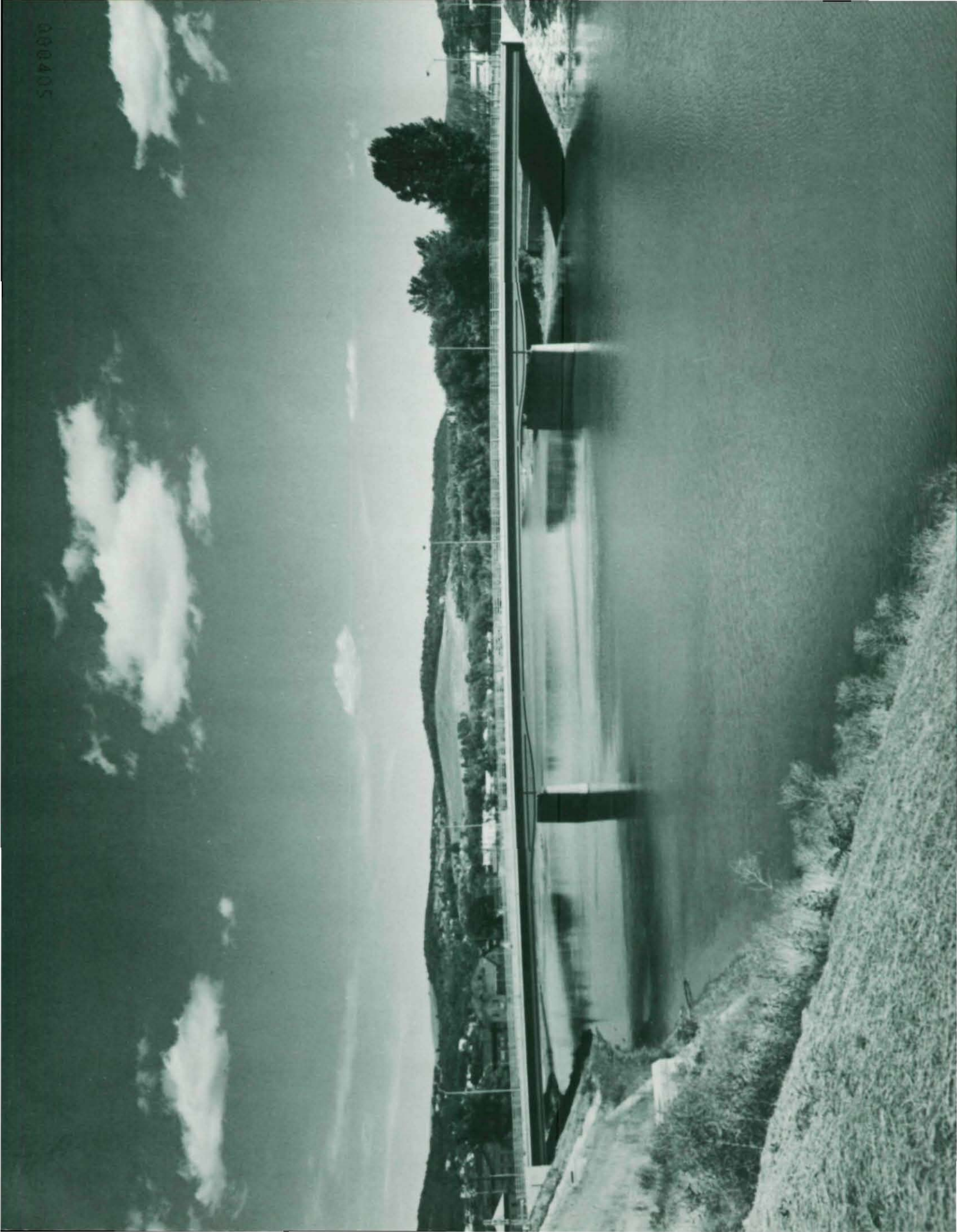
Cumberland Bridge Company, Camp Hill, Pennsylvania

JURORS' COMMENT:

*"Neatly designed. It fits well into the landscape. It is simply handled. The piers are straightforward. For the span lengths, the curved bottom chord is very fitting. There is a nice handling of the stiffeners on the plate girder and also of the increasing depth of the plate girder at the piers. It is rhythm of simple design and is gracefully done."*



000405







PRIZE BRIDGE 1965

907000

D E V I L S R I V E R B R I D G E

MEDIUM SPAN, HIGH CLEARANCE

DESIGNER

Texas Highway Department, Austin, Texas

OWNER

Texas Highway Department, Austin, Texas

GENERAL CONTRACTOR

H. B. Zachry Company, San Antonio, Texas

FABRICATOR

Mosher Steel Company, Houston, Texas

JURORS' COMMENT:

*"One of the most graceful bridges we have seen. It shows great thought, great economy, great restraint and is a perfectly beautiful piece of design. It is gracefully done and respects the landscape in which it is built. The designer has given the deck a rhythm-like treatment. The repetition of the same theme in all of the piers seems to minimize the extra height and lends credence to the total design. It is a very pleasing design. Here again the designer has treated the railings so that the motorist will have a view of the adjoining landscape."*



PRIZE BRIDGE 1965

# BRIDGE OVER CAYUGA—SENECA CANAL

## SHORT SPAN

### DESIGNER

New York State Dept. of Public Works, Albany, New York

### OWNER

State of New York, Albany, New York

### GENERAL CONTRACTOR

Dalrymple Gravel and Construction Company, Elmira, New York

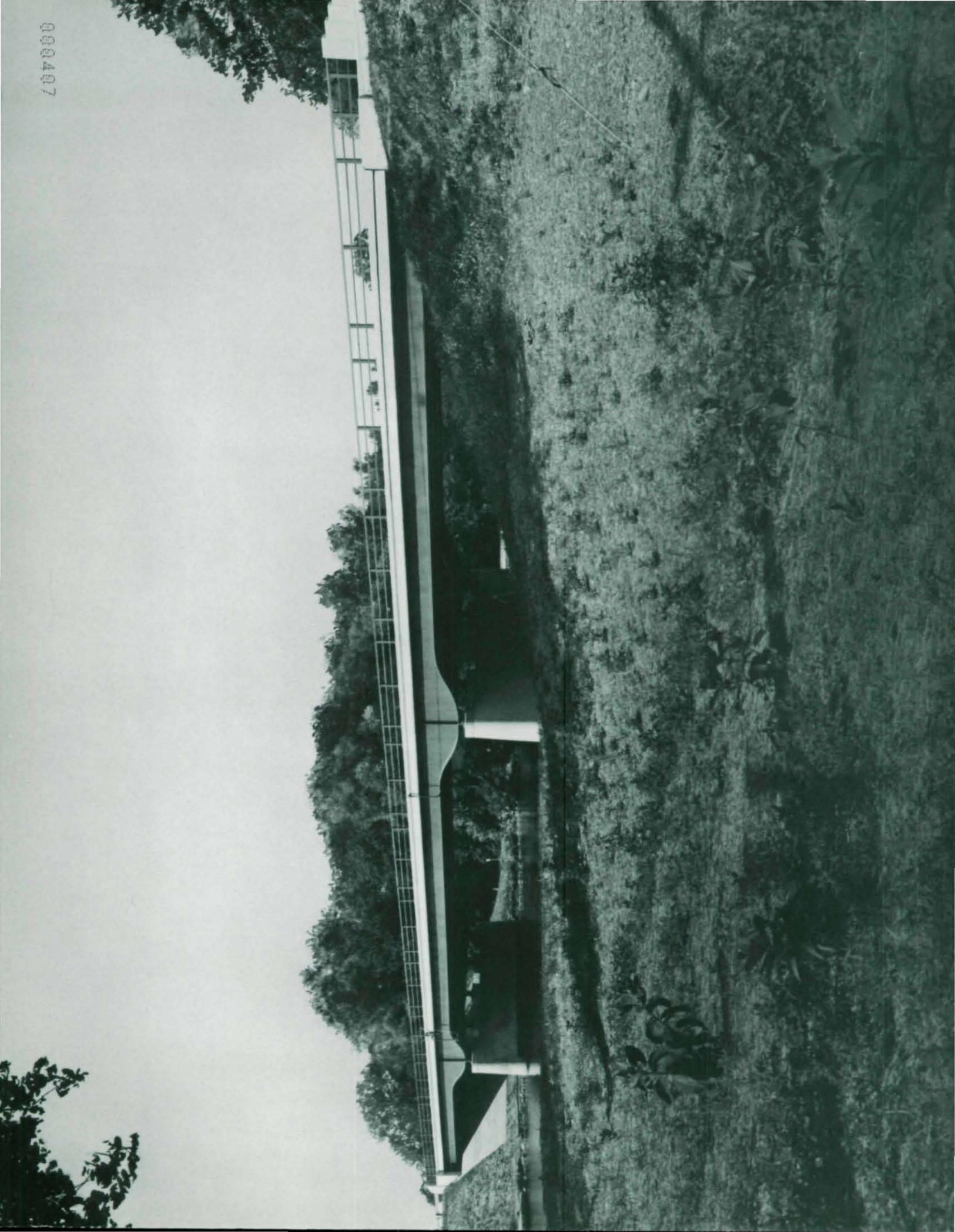
### FABRICATOR

American Bridge Division-U. S. Steel Corp., Pittsburgh, Pennsylvania

### JURORS' COMMENT:

*"This bridge fits well into the surrounding terrain. It is simple. It respects the landscape. The abutments and the piers are well handled. The steel is well designed, simple and straightforward. It is the proper solution in general from the point of view of a three span bridge having the bellied portion of the plate girders over the piers. We like the full-height open railing and feel that this is superior in aesthetics to the solid parapet type surmounted by a single railing on top."*

000407









PRIZE BRIDGE 1965

## LEBEC ROAD OVERCROSSING

## HIGHWAY GRADE SEPARATION

## DESIGNER

State of California, Sacramento, California

## OWNER

State of California, Sacramento, California

## GENERAL CONTRACTOR

Matich Constructors, Colton, California

## FABRICATOR

Kaiser Steel Corporation, Montebello, California

## JURORS' COMMENT:

*"A straightforward solution which respects the materials which go to make up this bridge. The steel and concrete look exactly like what they are. The designer has preserved the integrity of the material. The bridge also respects both the motorist and the pedestrian. The railing is simple in design and gives a view to those who are using this bridge. Altogether it is very well handled, it is a pleasing design, and it says 'bridge'."*

#### AWARDS OF MERIT

Awards of Merit are granted to those bridges which, in addition to the Prize Bridges, are considered to be outstanding examples of aesthetic design. This year ten bridges in five categories were so honored by the Jury of Awards. They are pictured on the pages that follow.



# A W A R D O F M E R I T 1 9 6 5

## LONG SPAN

**U. S. 19 OVER SUMMERSVILLE RESERVOIR**  
NICHOLAS COUNTY, WEST VIRGINIA

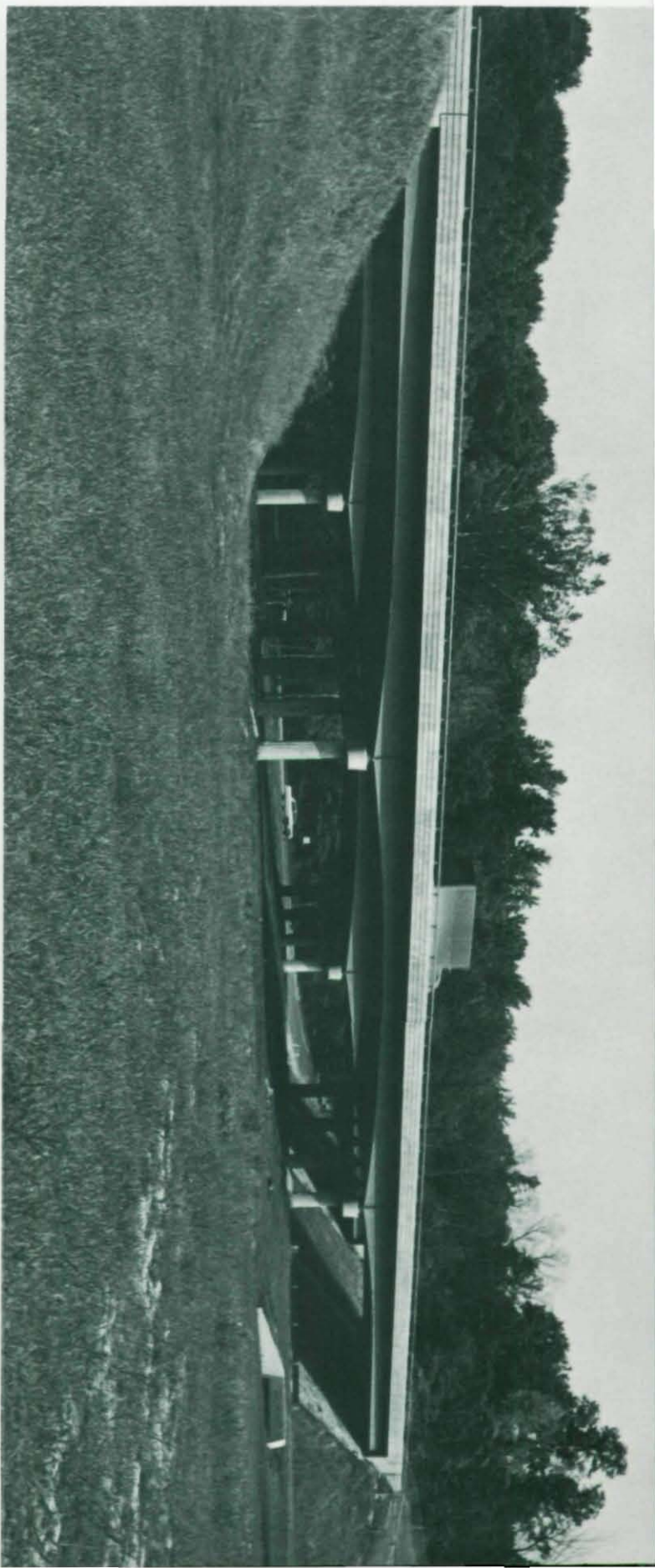
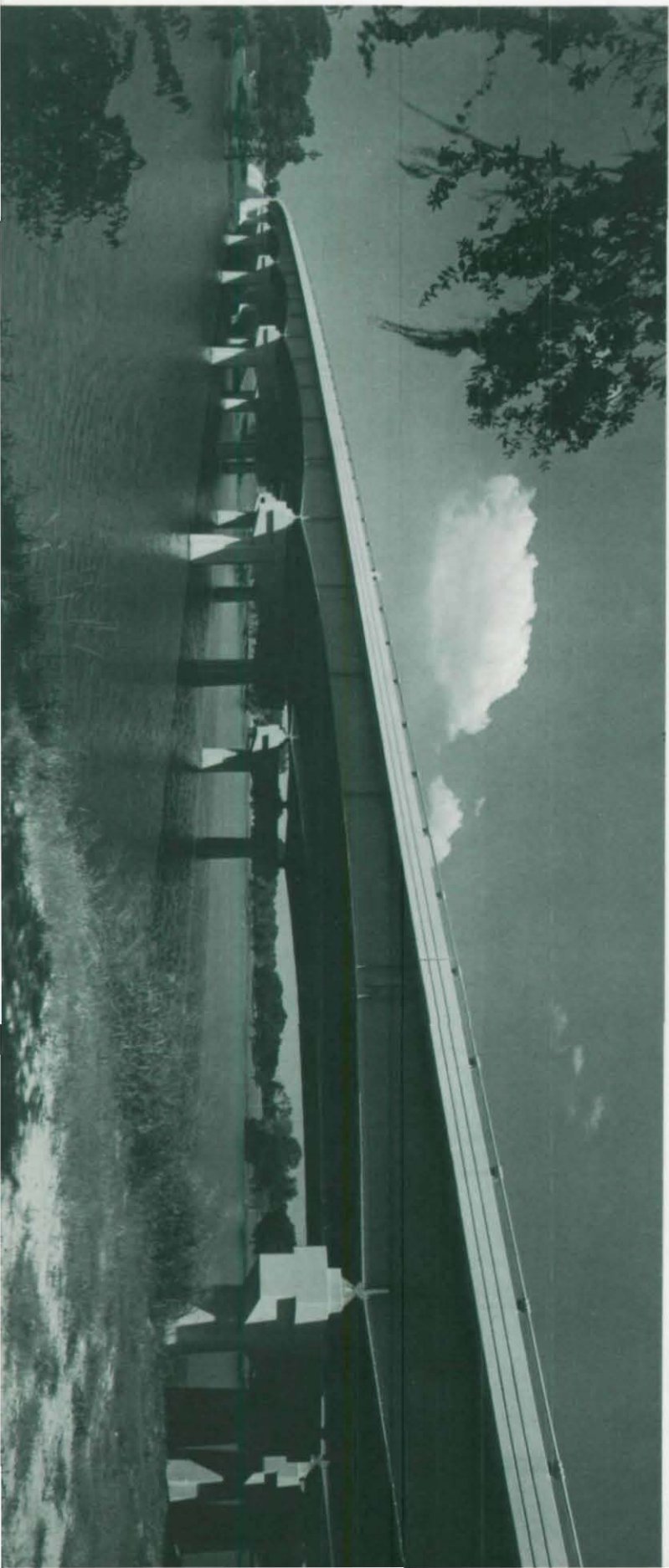
DESIGNER  
Richardson, Gordon and Associates for U. S. Army Engineers, Pittsburgh, Pennsylvania

OWNER  
The State Road Commission of West Virginia, Charleston, West Virginia

GENERAL CONTRACTOR  
Foster and Creighton Company, Nashville, Tennessee

FABRICATOR  
Fort Pitt Bridge Works, Canonsburg, Pennsylvania





## MEDIUM SPAN, LOW CLEARANCE

**CAPITAL BELTWAY (I-495) OVER JONES MILLS  
ROAD & ROCK CREEK**  
FOREST GLEN PARK, MARYLAND

## DESIGNER

David Volkert and Associates, Washington, D. C.

## OWNER

Maryland State Roads Commission, Baltimore, Maryland

## GENERAL CONTRACTOR

Wright Contracting Co., Columbus, Georgia

## FABRICATOR

Atlas Machine & Iron Works, Arlington, Virginia

## A W A R D O F M E R I T 1 9 6 5

## MEDIUM SPAN, LOW CLEARANCE

**CITY PARK LAKE BRIDGE**  
BATON ROUGE, LOUISIANA

## DESIGNER

Modjeski and Masters, Harrisburg, Pennsylvania

## OWNER

Louisiana Department of Highways, Baton Rouge, Louisiana

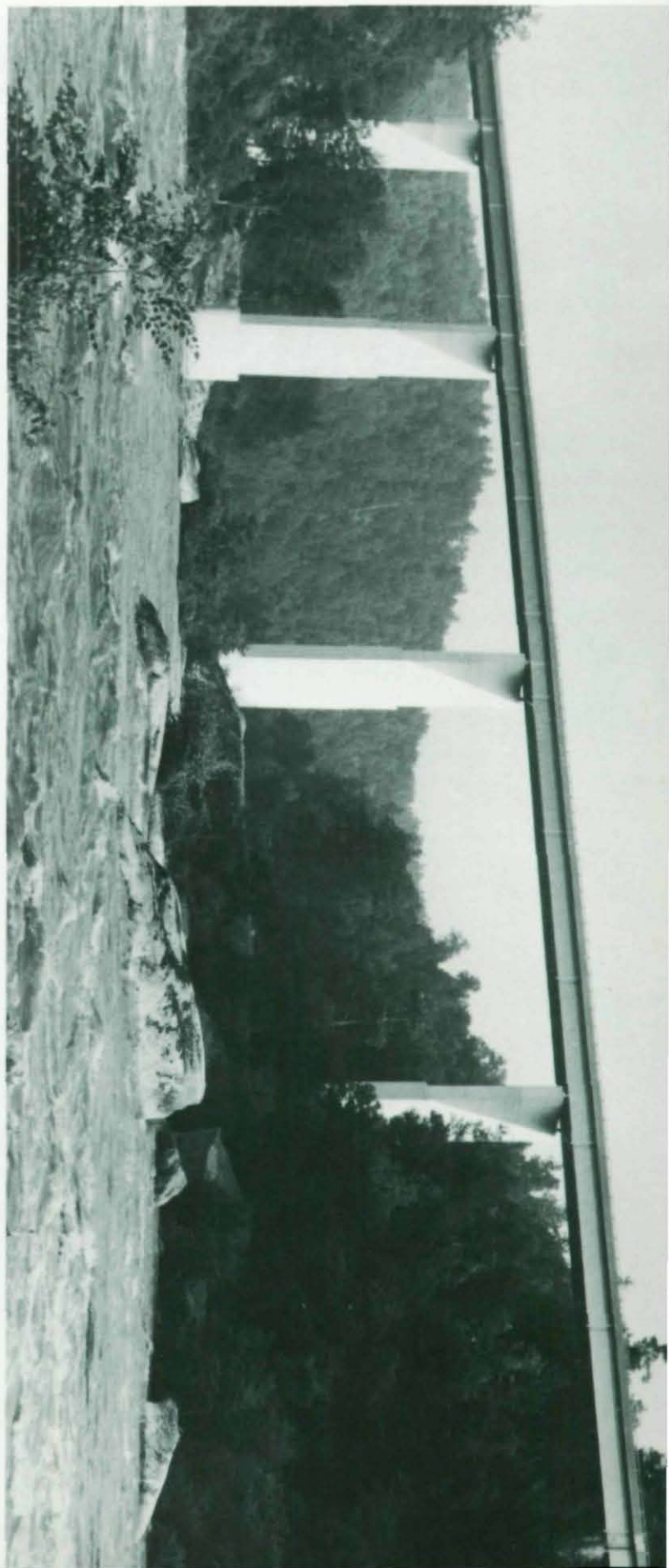
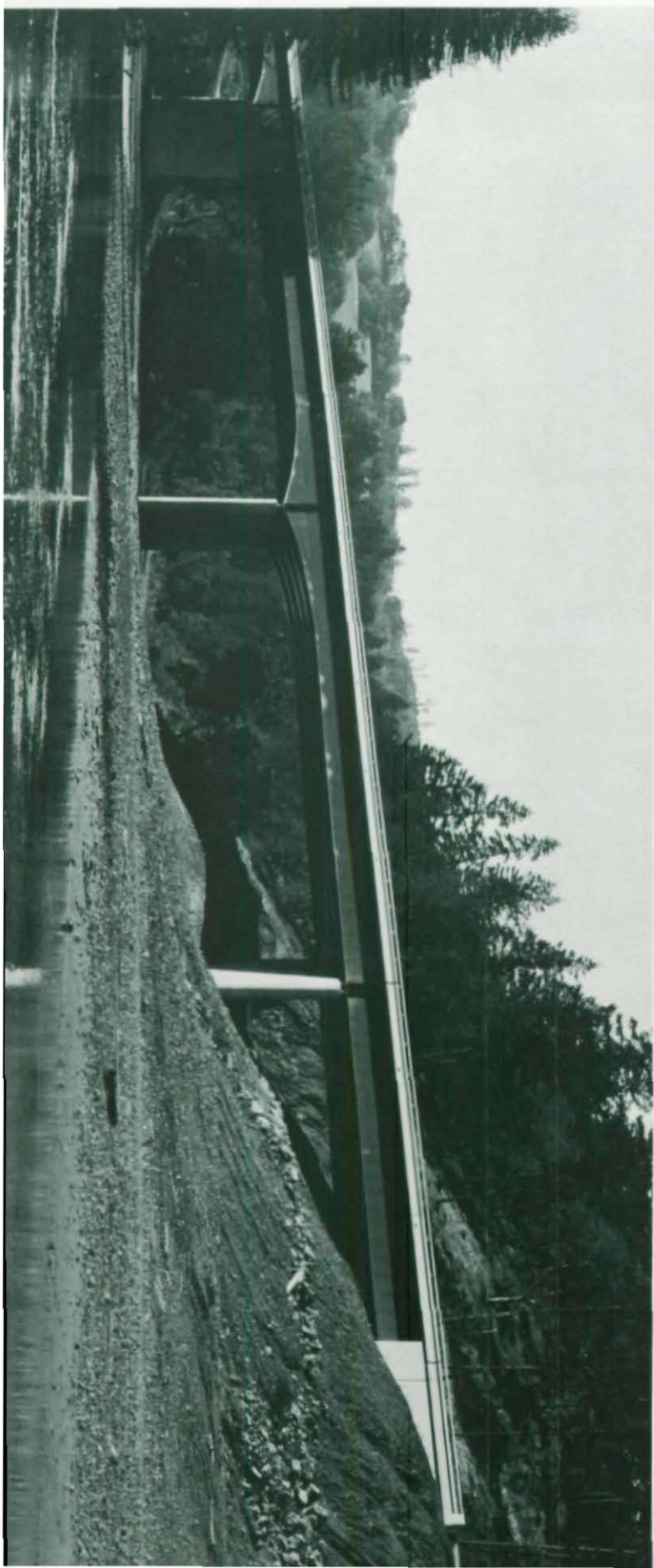
## GENERAL CONTRACTOR

Boh Bros. Construction Company, New Orleans, Louisiana

## FABRICATOR

American Bridge Division-U.S. Steel Corp., Orange, Texas







MEDIUM SPAN, HIGH CLEARANCE

**STATE 39 OVER SUMMERSVILLE RESERVOIR**

NICHOLAS COUNTY, WEST VIRGINIA

DESIGNER

Richardson, Gordon and Associates for U. S. Army Engineers, Pittsburgh, Pennsylvania

OWNER

The State Road Commission of West Virginia, Charleston, West Virginia

GENERAL CONTRACTOR

Joint Venture: Agnew-Joseph Company, Ralph Burns Paving, Inc., L. S. Coleman Co.

FABRICATOR

Fort Pitt Bridge Works, Canonsburg, Pennsylvania

A W A R D O F M E R I T 1 9 6 5

MEDIUM SPAN, HIGH CLEARANCE

**SOUTH FORK EEL RIVER BRIDGE & SEPARATION**

SCENIC HIGHWAY 101 AT SYLVANDALE, CALIFORNIA

DESIGNER

State of California, Sacramento, California

OWNER

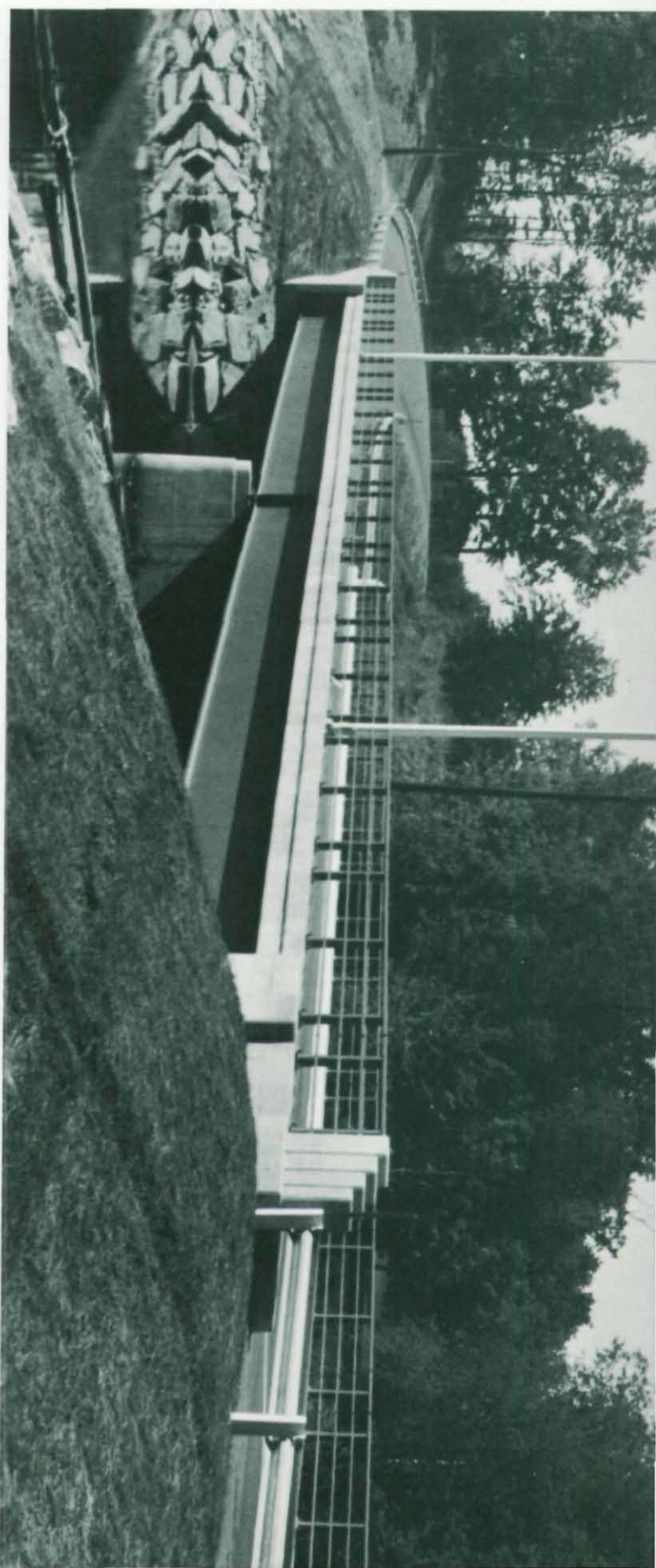
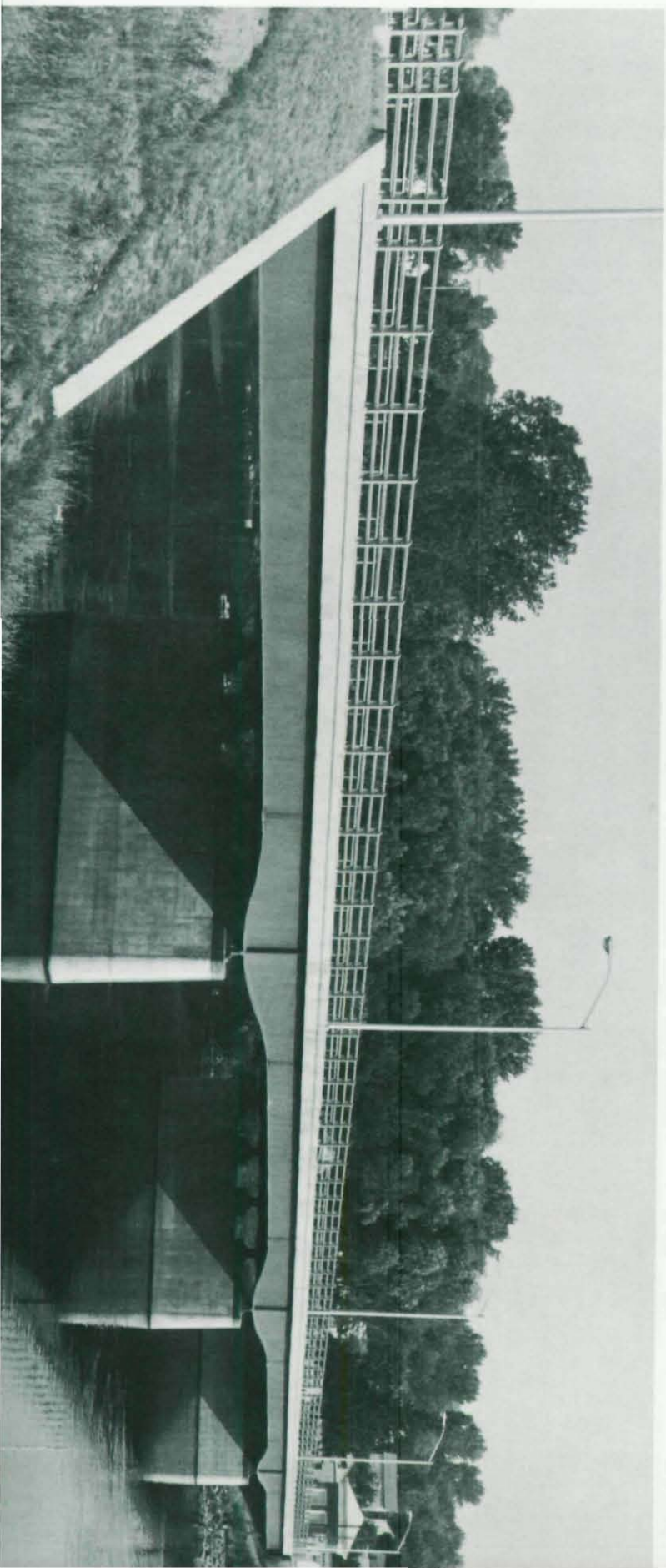
State of California, Sacramento, California

GENERAL CONTRACTOR

Morrison-Knudsen Co., Inc., Seattle, Washington

FABRICATOR

Bethlehem Steel Corp., Alameda, California





**SHORT SPAN****BRIDGE OVER MOOSE RIVER**

LYONS FALLS, NEW YORK

**DESIGNER**

New York State Dept. of Public Works, Albany, New York

**OWNER**

State of New York, Albany, New York

**GENERAL CONTRACTOR**

Thomason &amp; Perry, Inc., Troy, New York

**FABRICATOR**

Gouverneur Iron Works, Gouverneur, New York

**A W A R D O F M E R I T 1 9 6 5****SHORT SPAN****BRIDGE NO. 2 OVER BLACK RIVER**

DEXTER, NEW YORK

**DESIGNER**

New York State Dept. of Public Works, Albany, New York

**OWNER**

State of New York, Albany, New York

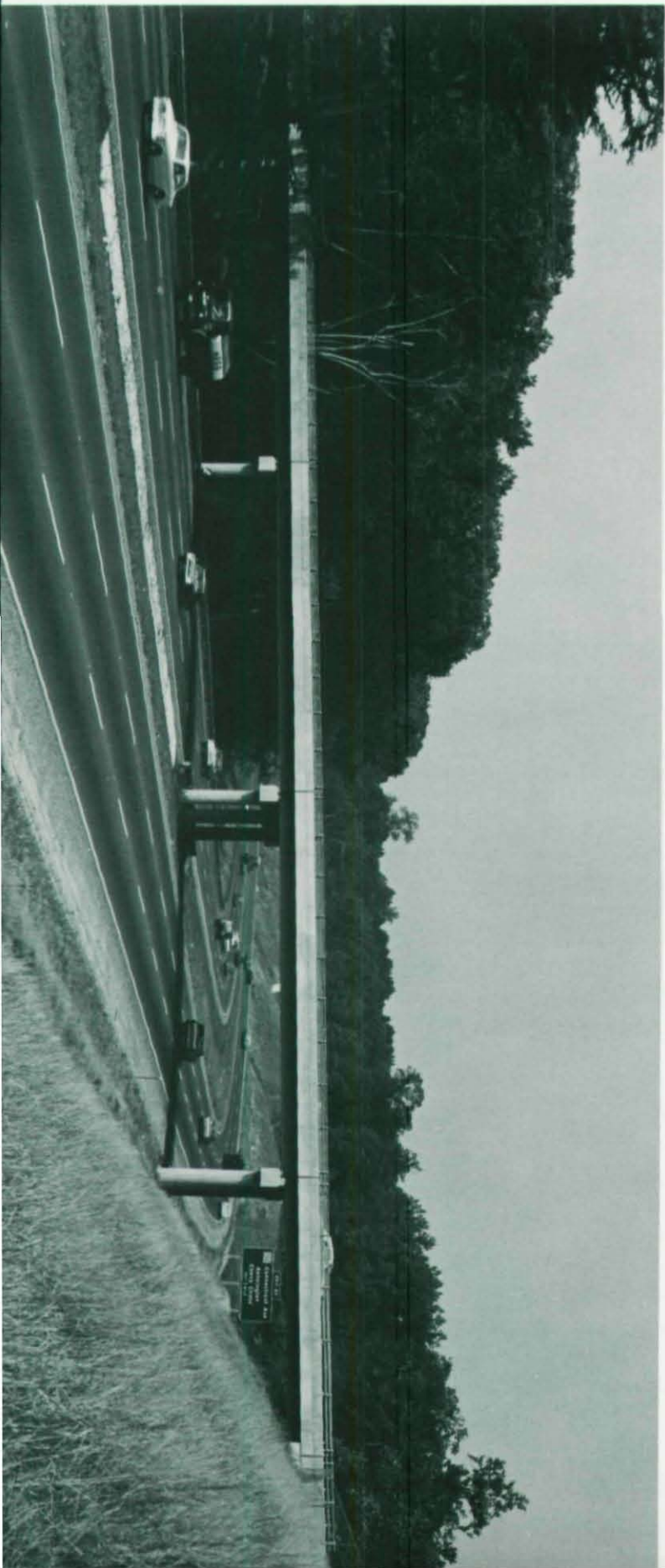
**GENERAL CONTRACTOR**

H. L. Baughman, Inc., Rochester, New York

**FABRICATOR**

Ernst Construction Corporation, Buffalo, New York





## HIGHWAY GRADE SEPARATION

**INTERSTATE 71 UNDER GRAVEL PIT ROAD**

MEDINA COUNTY, OHIO

## DESIGNER

J. E. Greiner Company, Baltimore, Maryland

## OWNER

State of Ohio, Columbus, Ohio

## GENERAL CONTRACTORS

The Harry Miller Excavating Co. and The National Engineering &amp; Contracting Co.

## FABRICATOR

The Burger Iron Company, Akron, Ohio

## A W A R D O F M E R I T 1 9 6 5

## HIGHWAY GRADE SEPARATION

**LINDEN LANE OVER CAPITAL BELTWAY (I-495)**

FOREST GLEN PARK, MARYLAND

## DESIGNER

Maryland State Roads Commission, Baltimore, Maryland

## OWNER

Maryland State Roads Commission, Baltimore, Maryland

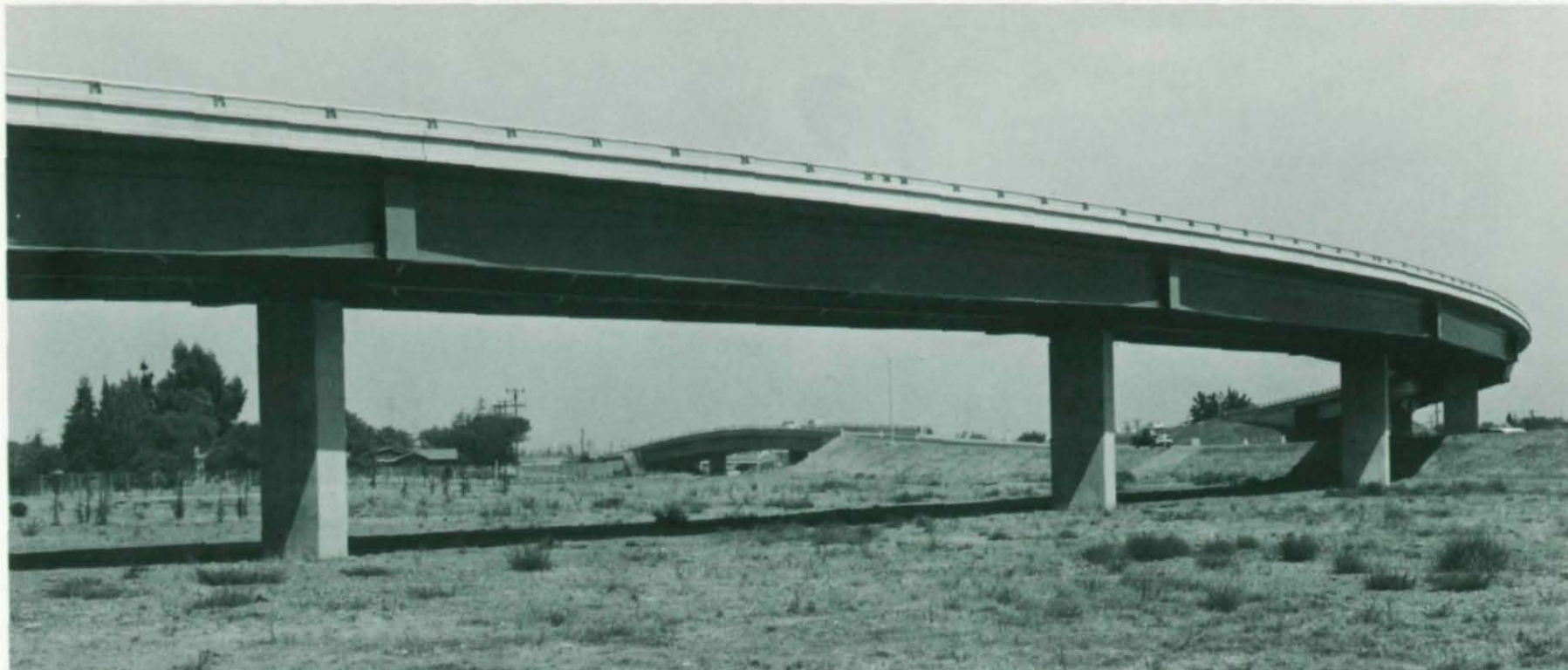
## GENERAL CONTRACTOR

Wright Contracting Co., Columbus, Georgia

## FABRICATOR

Atlas Machine &amp; Iron Works, Arlington, Virginia





# A W A R D   O F   M E R I T   1 9 6 5

## HIGHWAY GRADE SEPARATION

### **NORTHBOUND ROUTE 280/17 SEPARATION**

CITY OF SAN JOSE, CALIFORNIA

#### DESIGNER

State of California, Sacramento, California

#### OWNER

State of California, Sacramento, California

#### GENERAL CONTRACTORS

Gibbons & Reed Co. and Dan Caputo Co.

#### FABRICATOR

Herrick Iron Works, Hayward, California



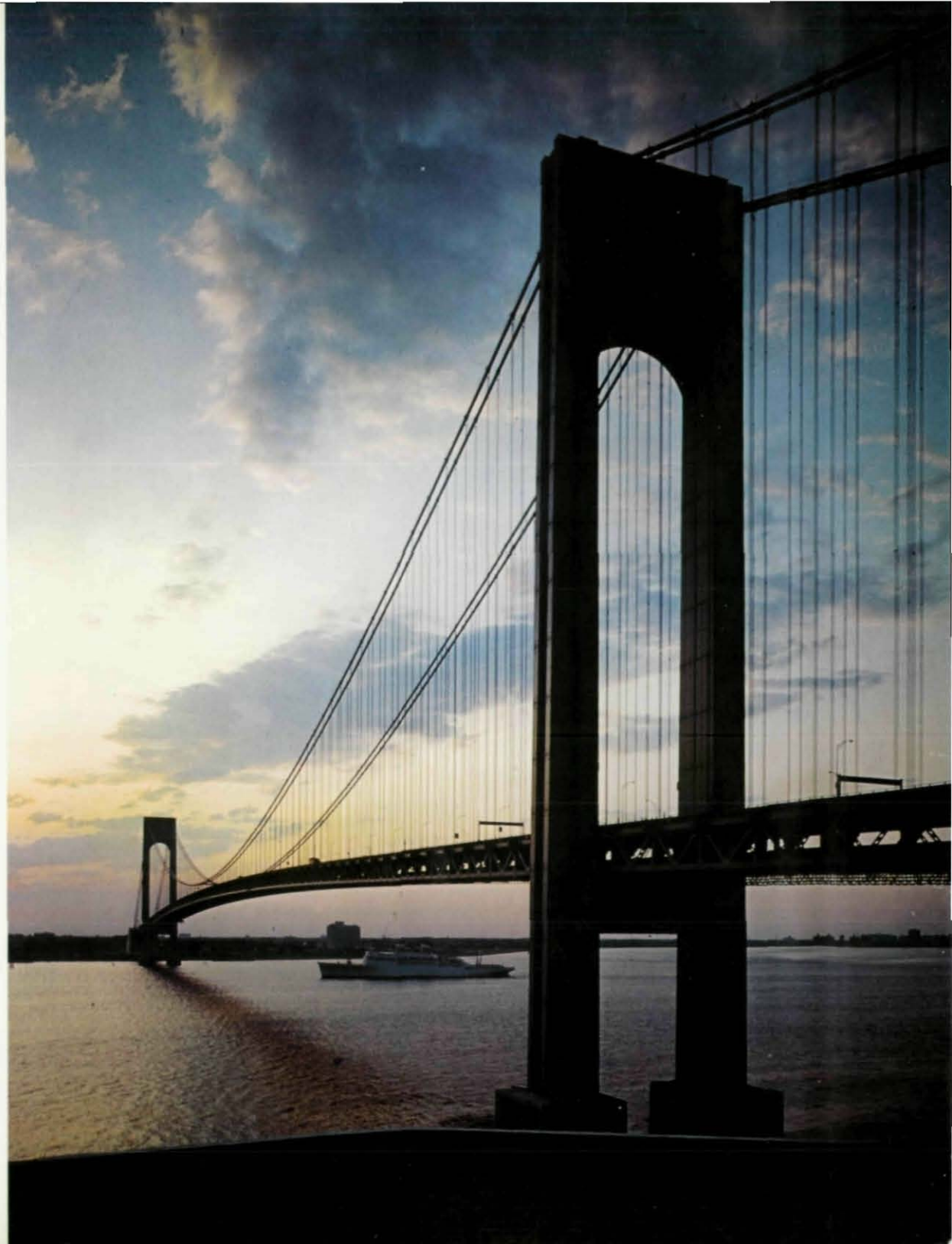
# SPECIAL AWARD

## VERRAZANO-NARROWS BRIDGE

A special award of recognition has been made by AISC to the Verrazano-Narrows Bridge as representing an "outstanding achievement in technology and aesthetics." This is the first time that such a special award has been granted. A stainless steel plaque will be affixed to the bridge as a permanent tribute.

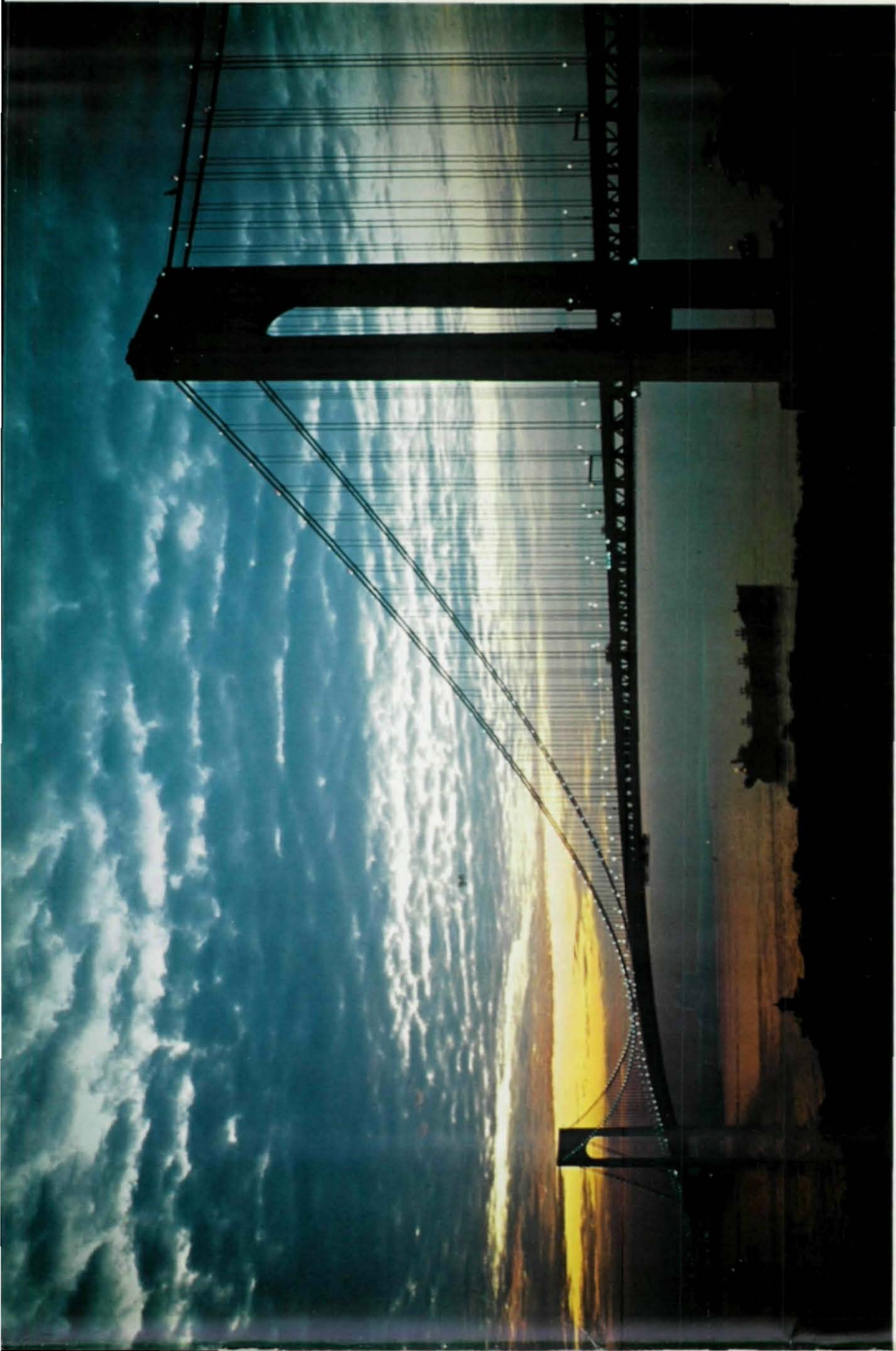
Designer: Ammann and Whitney, New York, N. Y.

Owner: Triborough Bridge and Tunnel Authority, New York, N. Y.









Photos of Verrazano-Narrows Bridge  
Courtesy of Triborough Bridge and Tunnel Authority





---

**AMERICAN INSTITUTE OF STEEL CONSTRUCTION**  
101 Park Avenue, New York, N. Y. 10017

