



PRIZE  
BRIDGES  
1967

000434





## AWARD CATEGORIES

### LONG SPAN BRIDGES

Bridges having one or more spans of over 400 ft in length.

### MEDIUM SPAN BRIDGES, LOW CLEARANCE

Bridges having vertical clearances of less than 35 ft, costing over \$500,000 and having no single span (as measured by the supporting foundations) longer than 400 ft in length.

### MEDIUM SPAN BRIDGES, HIGH CLEARANCE

Bridges with vertical clearance of 35 ft or more, costing over \$500,000, and having no single span (as measured by the supporting foundations) longer than 400 ft in length.

### SHORT SPAN BRIDGES

Bridges having fixed spans and costing less than \$500,000.

### HIGHWAY GRADE SEPARATION BRIDGES

Bridges whose basic purpose is highway grade separation as contrasted to the above categories.

### MOVABLE SPAN BRIDGES

Bridges having a movable span.

### SPECIAL TYPE BRIDGES

Includes pedestrian overpass bridges, and other special purpose bridges not identifiable to one of the above categories.

# PRIZE BRIDGES 1967

Steel bridges selected in the annual national competition conducted by the American Institute of Steel Construction as the most beautiful bridges opened to traffic in 1966.

AMERICAN INSTITUTE OF STEEL CONSTRUCTION  
101 Park Avenue, New York, N. Y. 10017



# JURY OF AWARDS



Left to right: Louis Rossetti, W. Jack Wilkes, Dr. Nathan M. Newmark, Jonathan G. Wright, Richard H. Tatlow III.

**DR. NATHAN M. NEWMARK, F.ASCE**

Head, Department of Civil Engineering, University of Illinois  
Urbana, Illinois

**LOUIS ROSSETTI, FAIA**

Giffels & Rossetti, Inc., Architects and Engineers  
Detroit, Michigan

**RICHARD H. TATLOW III, F.ASCE**

President, American Society of Civil Engineers  
President, Abbott, Merkt & Co.  
New York, N. Y.

**W. JACK WILKES**

Chief, Bridge Division, Bureau of Public Roads  
Washington, D. C.

**JONATHAN G. WRIGHT, F.ASCE**

President, Earl & Wright  
San Francisco, California

# BEAUTY IN STEEL BRIDGES

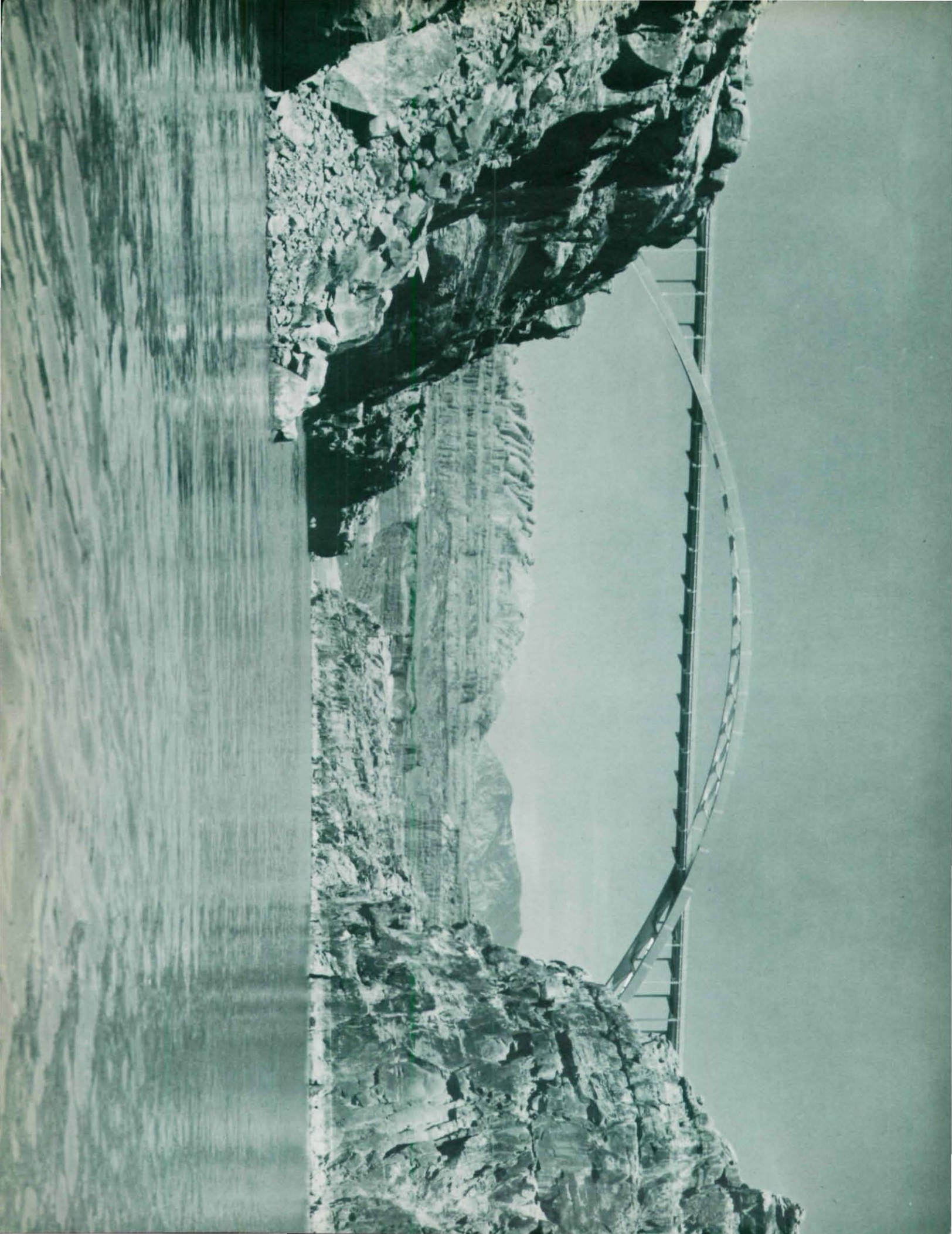
The enduring beauty of steel bridges is eloquent tribute to the vision and skill of the men who plan, design and build them. The bridge designer of today is both artist and engineer. He understands the potential for strength and beauty which is inherent in steel structures, and he knows that aesthetic appearance can be achieved at no sacrifice of efficiency or economy. The simple grace of a highway overpass, no less than the majestic sweep of a river crossing, reflects a creative integration of structure, function and form, skillfully executed in beautiful bridges of steel.

To promote a more widespread appreciation of the aesthetics of steel bridges and to honor the architectural excellence of modern bridge design, the American Institute of Steel Construction sponsors an annual Prize Bridge Competition. Each year a distinguished Jury of Awards composed of leading art directors, architects and engineers, selects the steel bridges which it judges to be the most beautiful of those opened to traffic in the United States during the previous year.

To establish an equitable basis for competition, awards are made in each of several contest classifications. Size, cost and operating conditions determine the class in which each entry is eligible to compete. The prize winning bridges are marked with a stainless steel plaque, and the designers, owners and steel fabricators are awarded engraved certificates in recognition of their contribution and achievement.

The American Institute of Steel Construction sponsors this competition and awards the prizes in the belief that it is helping to render a public service by stimulating a deep and lasting interest in improved bridge design. Since 1957 the Institute has recorded the prize bridges for each year in a single volume.





**PRIZE BRIDGE 1967**

**LONG SPAN**

# **COLORADO RIVER ARCH BRIDGE**

**DESIGNER**

Structures Division, Utah State Department of Highways, Salt Lake City, Utah

**OWNER**

Utah State Road Commission, Salt Lake City, Utah

**GENERAL CONTRACTOR**

W. W. Clyde & Company, Springville, Utah

**FABRICATOR**

Western Steel Company, Salt Lake City, Utah

**JURORS' COMMENT:**

*"This is an outstandingly beautiful and aesthetically pleasing structure. It is graceful and dramatic and fits into the landscape without being heavy and intrusive."*



**PRIZE BRIDGE 1967**

**MEDIUM SPAN, HIGH CLEARANCE**

# **PIONEER MEMORIAL BRIDGE**

**DESIGNER**

State of California, Bridge Department, Sacramento, California

**OWNER**

State of California, Sacramento, California

**GENERAL CONTRACTOR**

Superstructure: Kaiser Steel Corporation, Oakland California

Substructure: Fruin-Colnan Contracting Company,  
Western Sacramento, California

Le Boeuf Dougherty Contracting Co.,  
Richmond, California

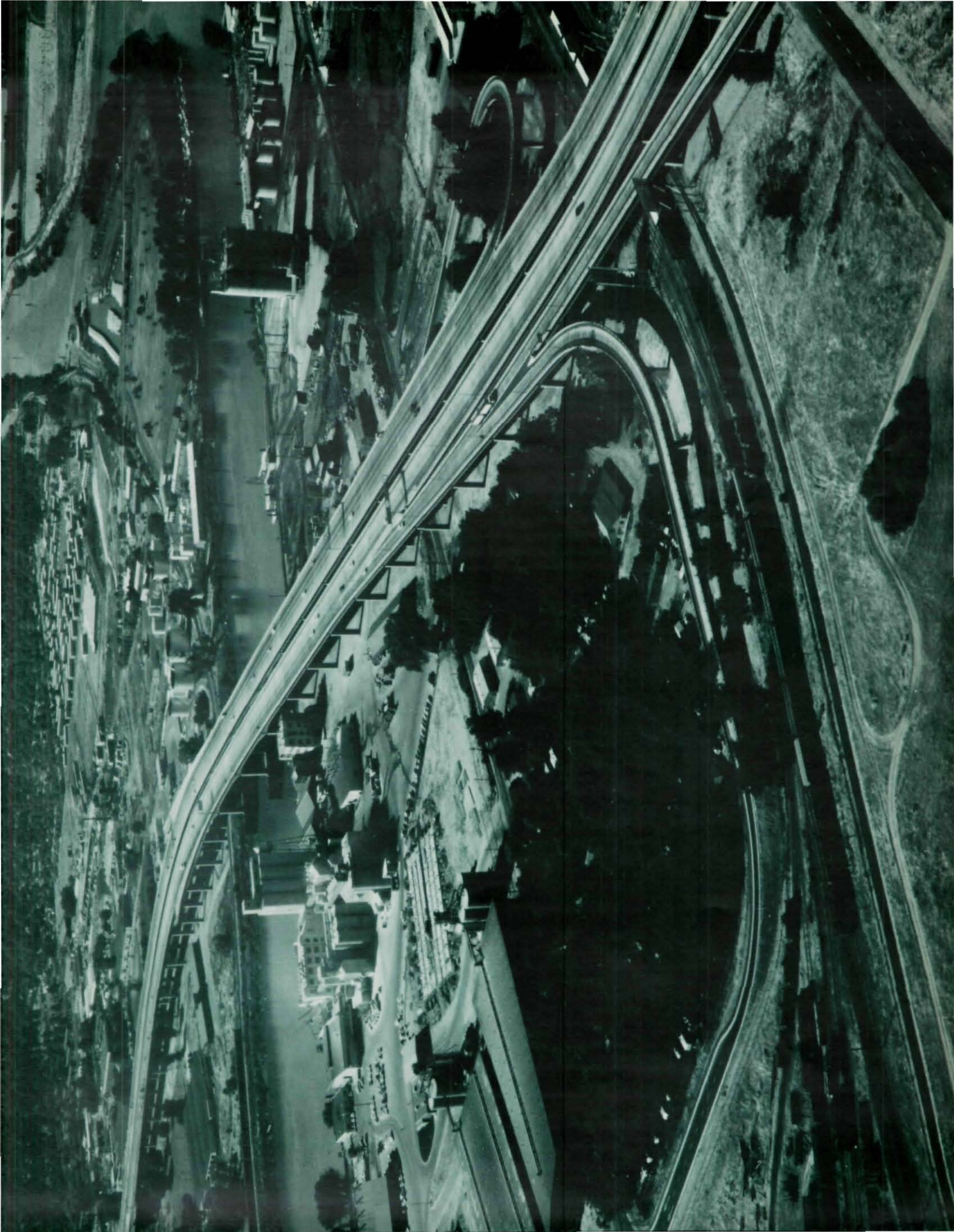
**FABRICATOR**

Kaiser Steel Corporation, Oakland, California

**JURORS' COMMENT:**

*"The bridge is in harmony with its surroundings. The curved girders are well proportioned and the details have been carefully handled. It is clean-cut and graceful."*











**PRIZE BRIDGE 1967**

**MEDIUM SPAN, LOW CLEARANCE**

# M E R C E D R I V E R B R I D G E

**DESIGNER**

State of California, Bridge Department, Sacramento, California

**OWNER**

State of California, Sacramento, California

**GENERAL CONTRACTOR**

H. Earl Parker and Thomas Construction Co., Fresno, California

**FABRICATOR**

San Jose Steel Company, Inc., San Jose, California

**JURORS' COMMENT:**

*"A well proportioned and harmonious looking structure. The slenderness of the girders blends well with the graceful and attractive piers. Elimination of the usual haunches contributes to the clean lines of the structure. The bridge fits beautifully into the landscape — it is very attractive."*

## PRIZE BRIDGE 1967

### SHORT SPAN

# NORTH FORK STILLAGUAMISH RIVER BRIDGE

#### DESIGNER

Bridge Division, Washington State Highway Commission, Olympia, Washington

#### OWNER

State of Washington, Olympia, Washington

#### GENERAL CONTRACTOR

Dale M. Madden Construction, Inc., Seattle, Washington

#### FABRICATOR

Northwest Steel Fabricators, Inc., Vancouver, Washington

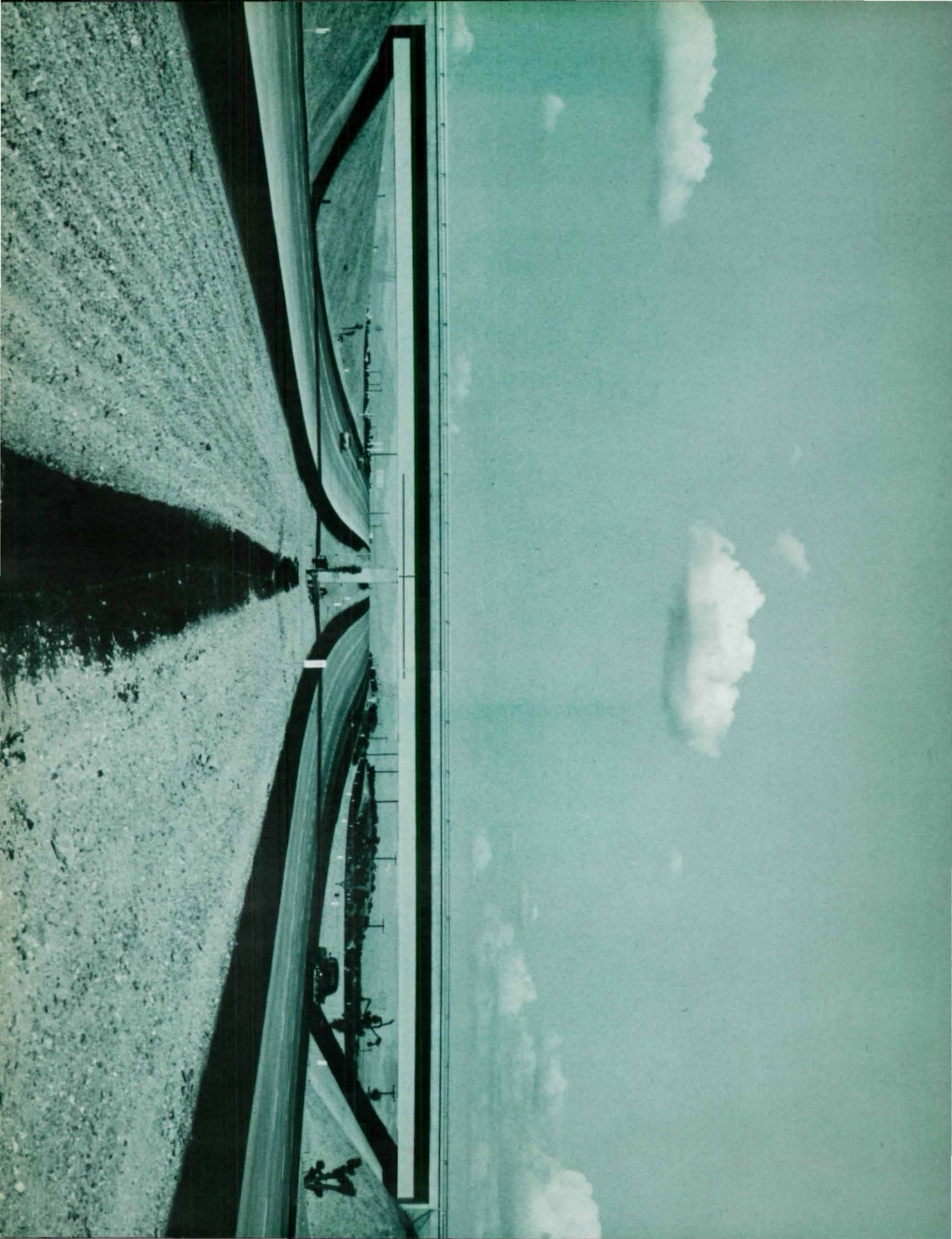
#### JURORS' COMMENT:

*"This is a clean and graceful structure with good lines. The slender vertical elements blend in well with the heavier upper lateral system. It avoids the closed-in type of approach, and looks attractive from the ends as well as from the sides. The tie is well handled."*











**PRIZE BRIDGE 1967**

**HIGHWAY GRADE SEPARATION**

# **OAK HILL ROAD OVERCROSSING**

**DESIGNER**

State of California, Bridge Department, Sacramento, California

**OWNER**

State of California, Sacramento, California

**GENERAL CONTRACTOR**

Kasler Corporation, Gordon H. Ball Enterprises, and E. L. Yeager Company,  
Riverside, California

**FABRICATOR**

Precision Fabricators, Inc., Paramount, California

**JURORS' COMMENT:**

*"A beautifully proportioned bridge. It is clean and there is absolutely no clutter. This is an excellent solution to the problem of eliminating the side piers in compliance with the new highway safety requirements."*

## PRIZE BRIDGE 1967

### MOVABLE SPAN

# ST. PAUL AVENUE BRIDGE

#### DESIGNER

Bureau of Bridges and Public Buildings, City of Milwaukee,  
Department of Public Works, Milwaukee, Wisconsin

#### OWNER

City of Milwaukee, Milwaukee, Wisconsin

#### GENERAL CONTRACTOR

Edward Kraemer & Sons, Inc., Plain, Wisconsin

#### FABRICATOR

Wisconsin Bridge & Iron Company, Milwaukee, Wisconsin

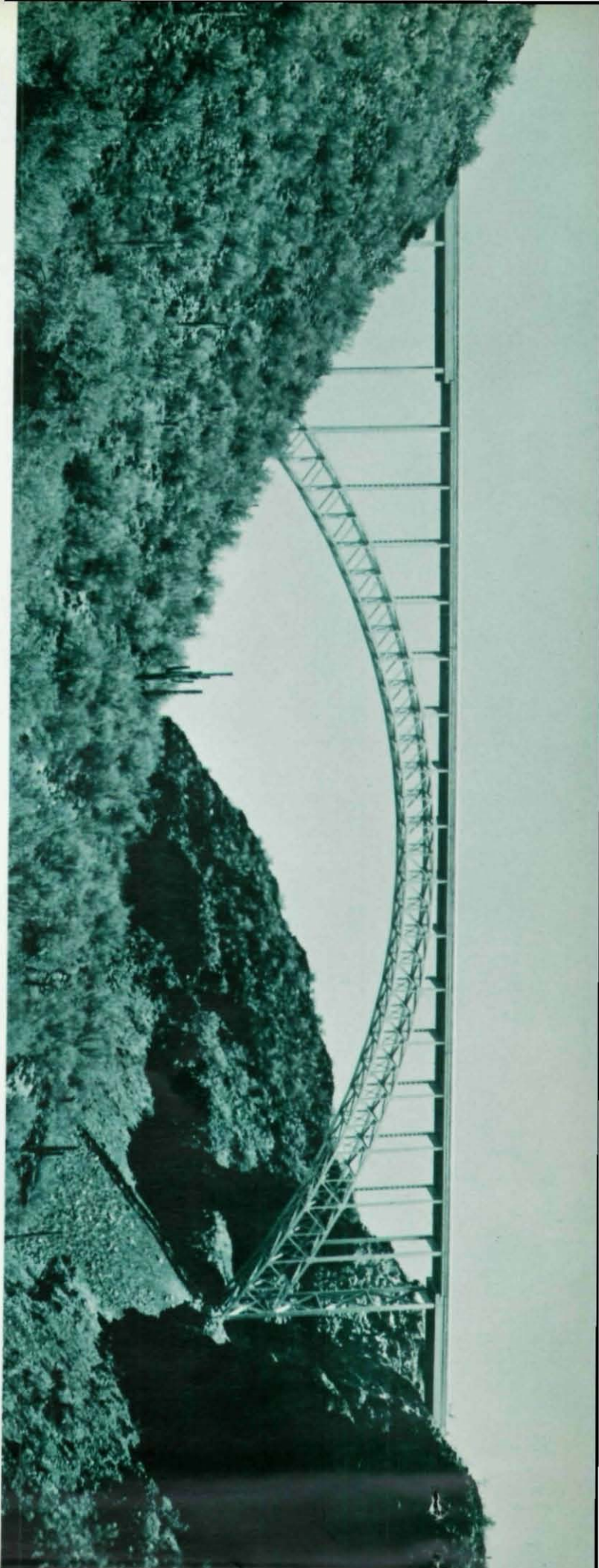
#### JURORS' COMMENT:

*"This unusual vertical lift bridge is so cleanly designed that it almost resembles a non-movable bridge. The control tower is unobtrusive. The designers have avoided the clutter often associated with bridges of this type and have provided a clean unobstructed roadway."*











**LONG SPAN****BURRO CREEK BRIDGE**

HIGHWAY 93, MOHAVE COUNTY, ARIZONA

**DESIGNER**

Bridge Division, Arizona Highway Department, Phoenix, Arizona

**OWNER**

Arizona Highway Department, Phoenix, Arizona

**GENERAL CONTRACTOR**

American Bridge Division — United States Steel, Pittsburgh, Pennsylvania

**FABRICATOR**

American Bridge Division — United States Steel, Pittsburgh, Pennsylvania

**A W A R D   O F   M E R I T   1 9 6 7****LONG SPAN****KLAMATH RIVER BRIDGE**

ORLEANS, CALIFORNIA

**DESIGNER**

State of California, Bridge Department, Sacramento, California

**OWNER**

State of California, Sacramento, California

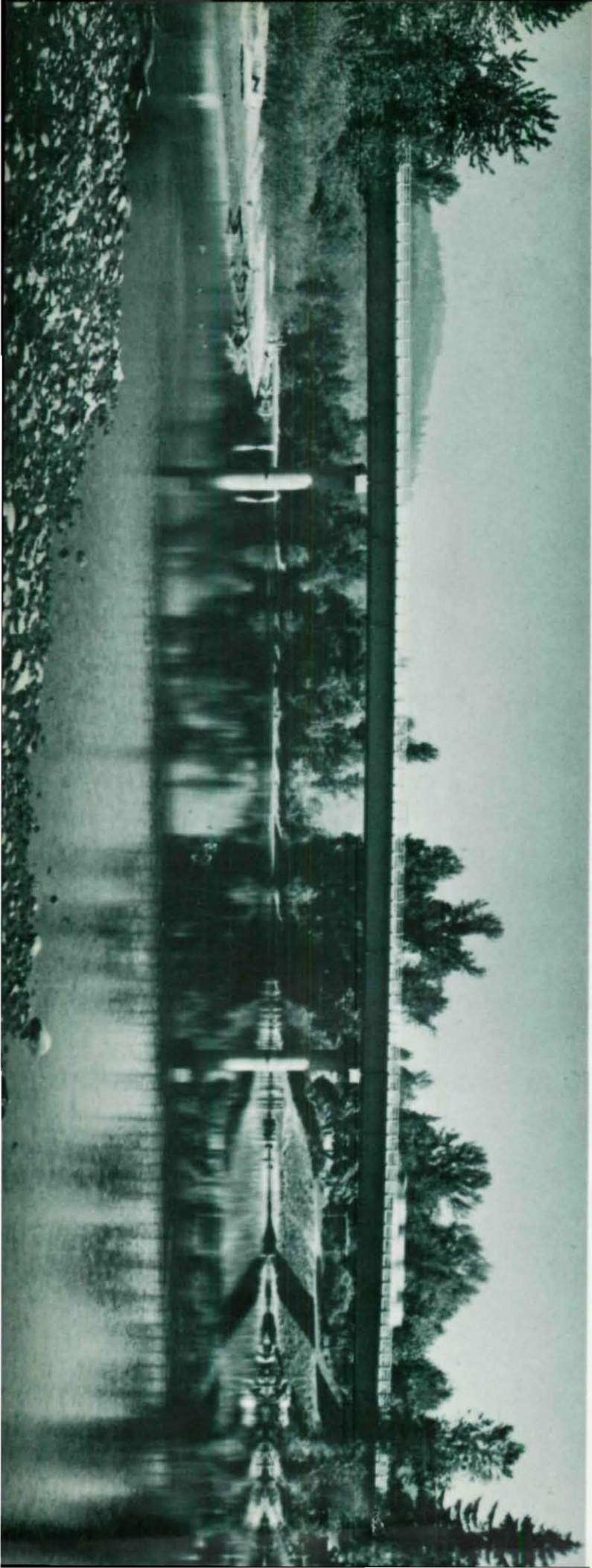
**GENERAL CONTRACTOR**

Murphy Pacific Corporation, Oakland, California

**FABRICATOR**

Murphy Pacific Corporation, Oakland, California







## **MEDIUM SPAN, HIGH CLEARANCE**

### **HANSEN BRIDGE OVER SNAKE RIVER**

NEAR HANSEN, IDAHO

#### **DESIGNER**

Idaho Department of Highways (Bridge Section) Boise, Idaho

#### **OWNER**

Idaho Department of Highways, Boise, Idaho

#### **GENERAL CONTRACTOR**

Peter Kiewit Sons Company, Omaha, Nebraska

#### **FABRICATOR**

Western Steel Company, Salt Lake City, Utah

# **A W A R D   O F   M E R I T   1 9 6 7**

## **MEDIUM SPAN, LOW CLEARANCE**

### **WOODLAND BRIDGE**

WOODLAND, WASHINGTON

#### **DESIGNER**

Bjorn A. Stiansen, Harry R. Powell & Associates, Seattle, Washington

#### **OWNERS**

Clark and Cowlitz Counties, Washington

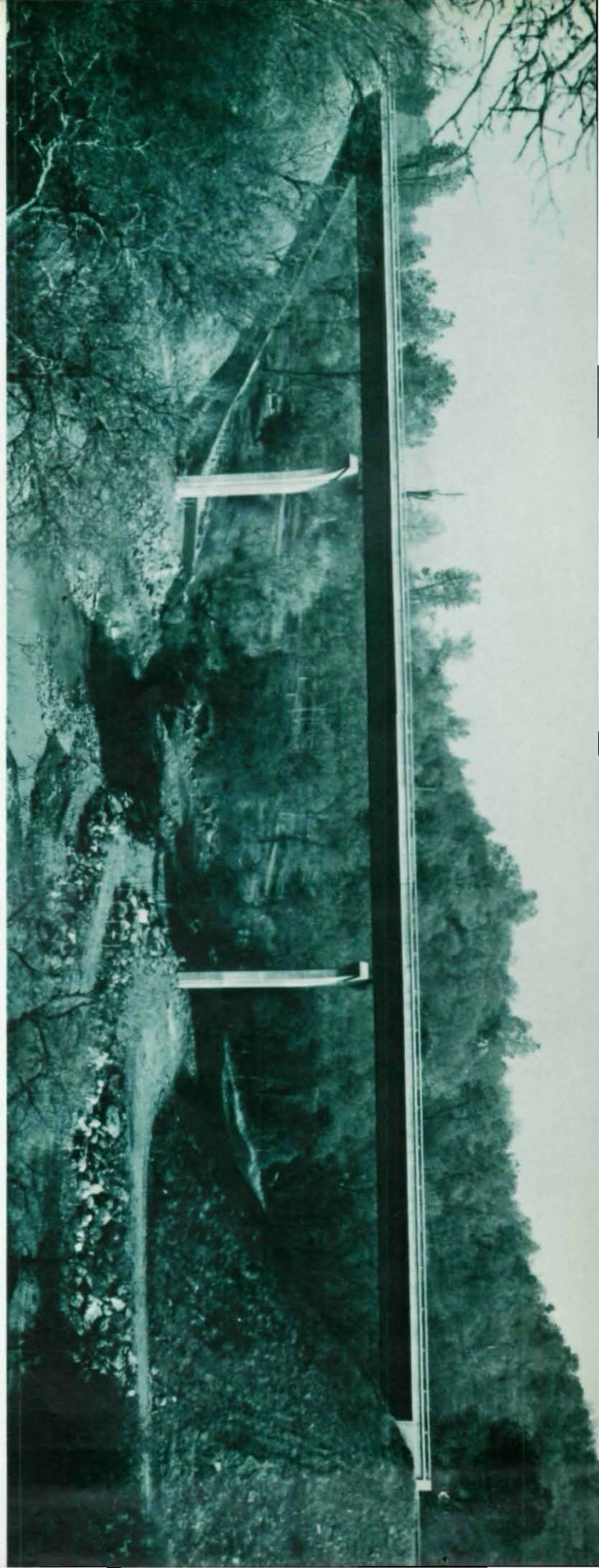
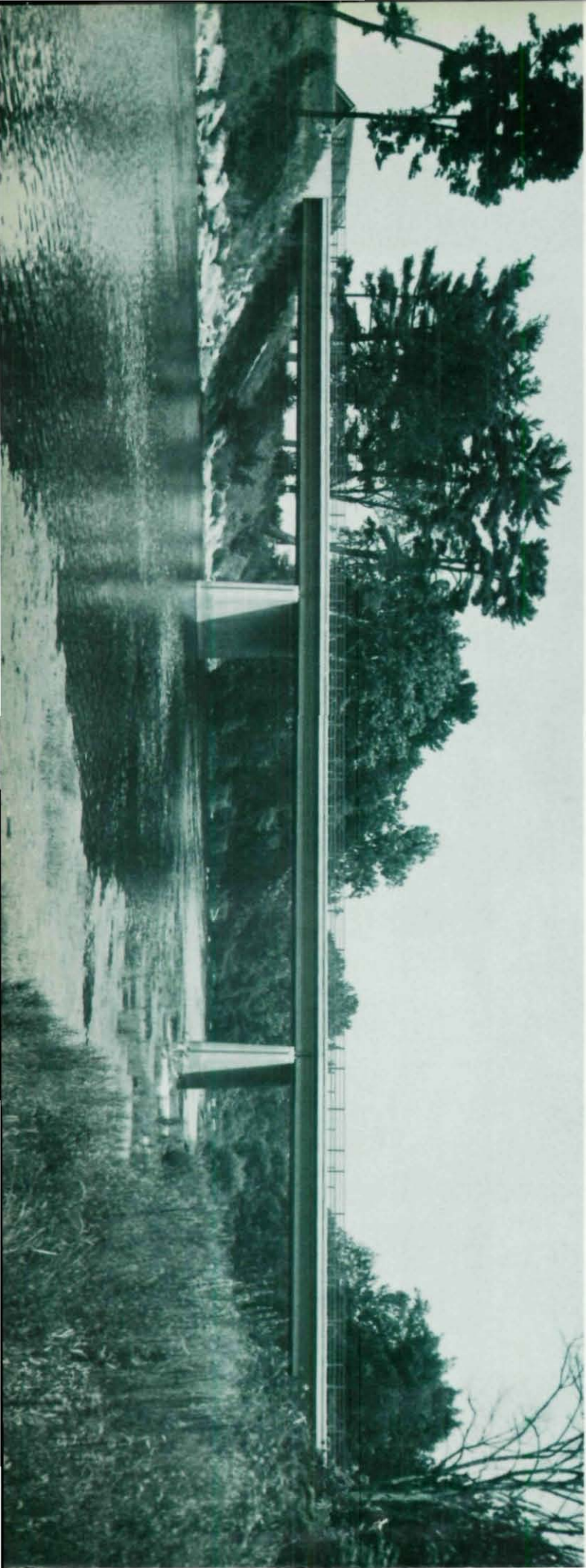
#### **GENERAL CONTRACTOR**

Ralph Lockyear Construction Co., Longview, Washington

#### **FABRICATOR**

Fought & Company, Inc., Portland, Oregon







**SHORT SPAN****DRY CREEK BRIDGE**

IONE, CALIFORNIA

**DESIGNER**

State of California, Bridge Department, Sacramento, California

**OWNER**

State of California, Sacramento, California

**GENERAL CONTRACTOR**

O. K. Mittry & Sons and A. L. Craft (Joint Venture), Gardena, California

**FABRICATOR**

San Jose Steel Company, Inc., San Jose, California

**A W A R D   O F   M E R I T   1 9 6 7****SHORT SPAN****ALLIGERVILLE ROAD BRIDGE OVER RONDOUT CREEK**

ULSTER COUNTY, NEW YORK

**DESIGNER**

Office of the Deputy Chief Engineer (Design), New York State Dept. of Public Works, Albany, New York

**OWNER**

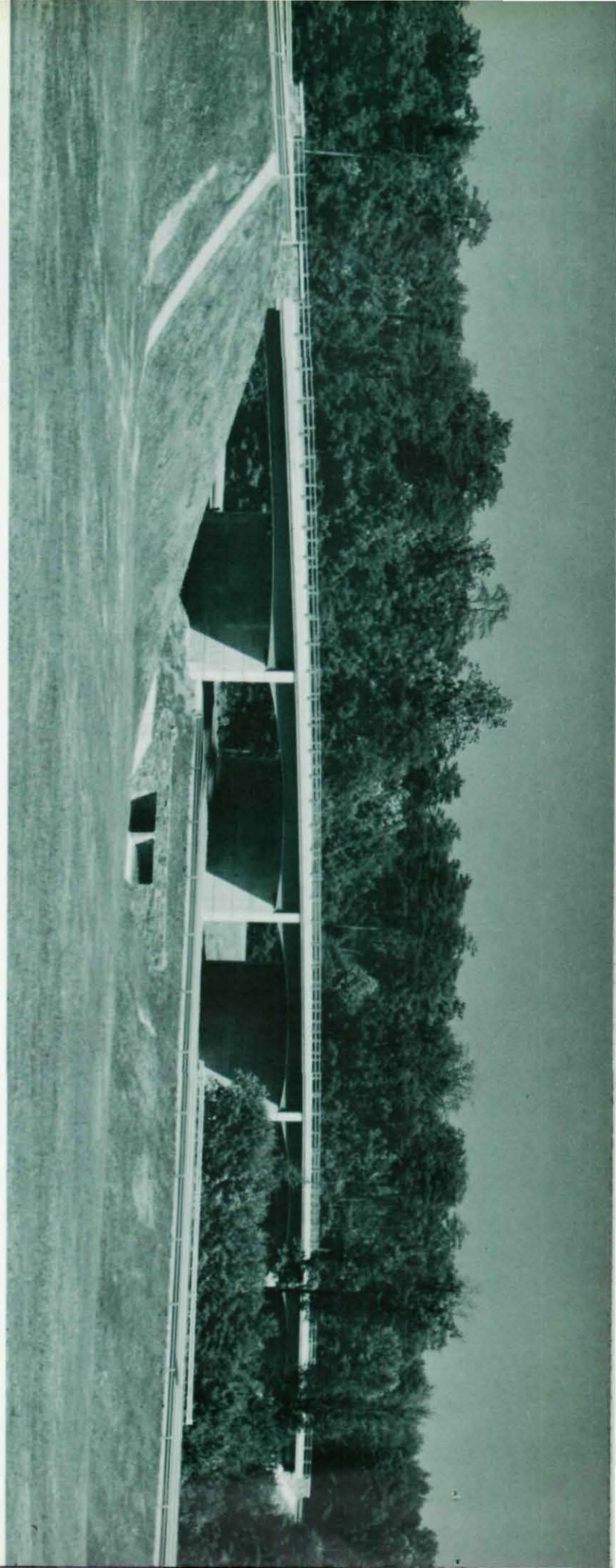
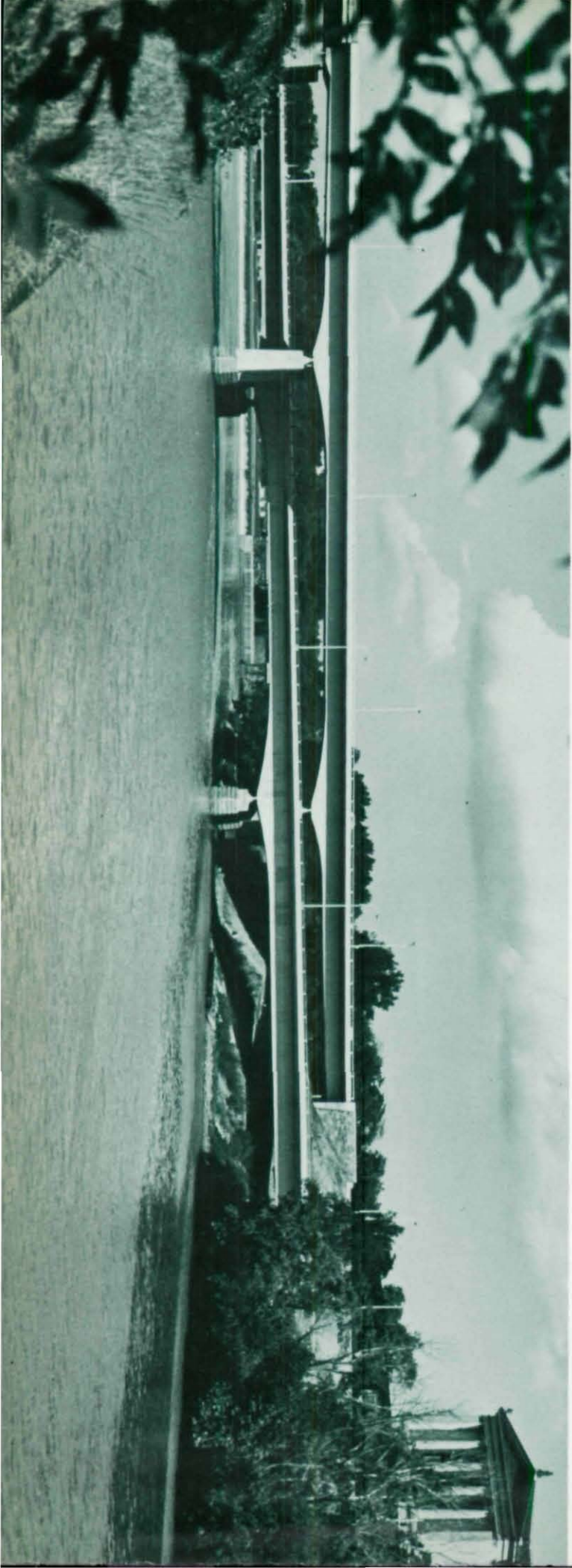
Ulster County Highway Department, Kingston, New York

**GENERAL CONTRACTOR**

V. J. Constanzi, Inc., Poughkeepsie, New York

**FABRICATOR**

American Bridge Division — United States Steel, Pittsburgh, Pennsylvania





## HIGHWAY GRADE SEPARATION

### GODDARD BRIDGE

GODDARD SPACE FLIGHT CENTER, GREENBELT, MARYLAND

#### DESIGNER

Whitman, Requardt and Associates, Baltimore, Maryland

#### OWNER

National Aeronautics and Space Administration, Goddard Space Flight Center  
Greenbelt, Maryland

#### GENERAL CONTRACTOR

Dewey Jordan, Inc., Frederick, Maryland

#### FABRICATOR

Cumberland Bridge Company, Camp Hill, Pennsylvania

# AWARD OF MERIT 1967

## HIGHWAY GRADE SEPARATION

### SPRING GARDEN STREET — WEST RIVER DRIVE BRIDGES

PHILADELPHIA, PENNSYLVANIA

#### DESIGNER

Bridge Division, Department of Streets, City of Philadelphia, Philadelphia, Pennsylvania

#### OWNER

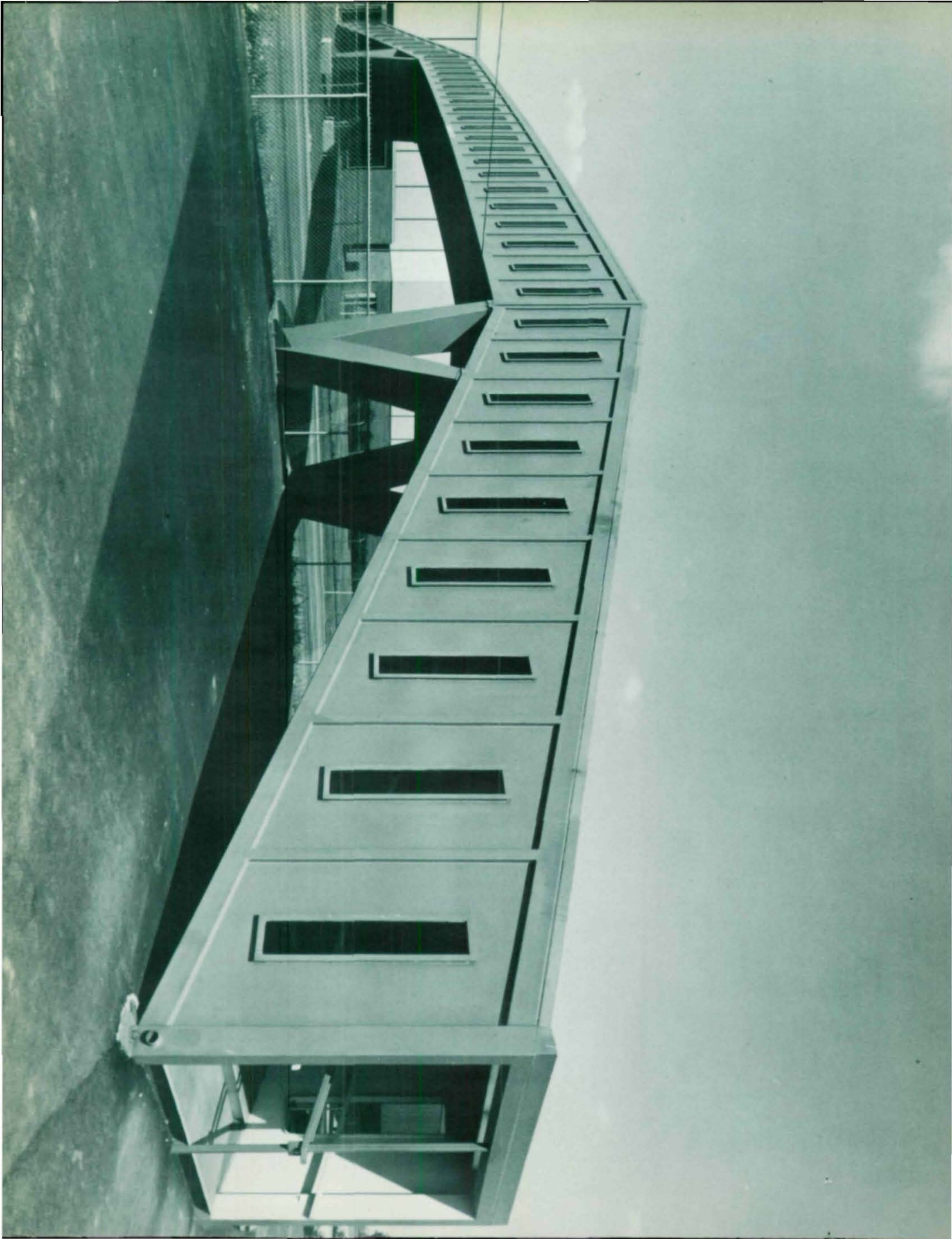
Spring Garden St. Bridge: Dept. of Highways, Commonwealth of Pennsylvania, Harrisburg, Pennsylvania  
West River Drive Bridge: Dept. of Streets, City of Philadelphia, Philadelphia, Pennsylvania

#### GENERAL CONTRACTOR

Conduit & Foundation Corporation, Philadelphia, Pennsylvania

#### FABRICATOR

Bethlehem Steel Corporation, Bethlehem, Pennsylvania





# AWARD OF MERIT 1967

## SPECIAL TYPE

### BELL AEROSYSTEMS PERSONNEL BRIDGE

WHEATFIELD, NEW YORK

DESIGNER, GENERAL CONTRACTOR,  
AND STEEL FABRICATOR

Guardian Engineering & Development Company, Carnegie, Pennsylvania

### OWNER

Bell Aerosystems Company, Division of Textron, Inc., Niagara Falls, New York





# AWARD OF MERIT 1967

## SPECIAL TYPE

**CRIBBON AVENUE PEDESTRIAN OVERCROSSING**  
CHEYENNE, WYOMING

**DESIGNER**

Wyoming State Highway Department, Cheyenne, Wyoming

**OWNER**

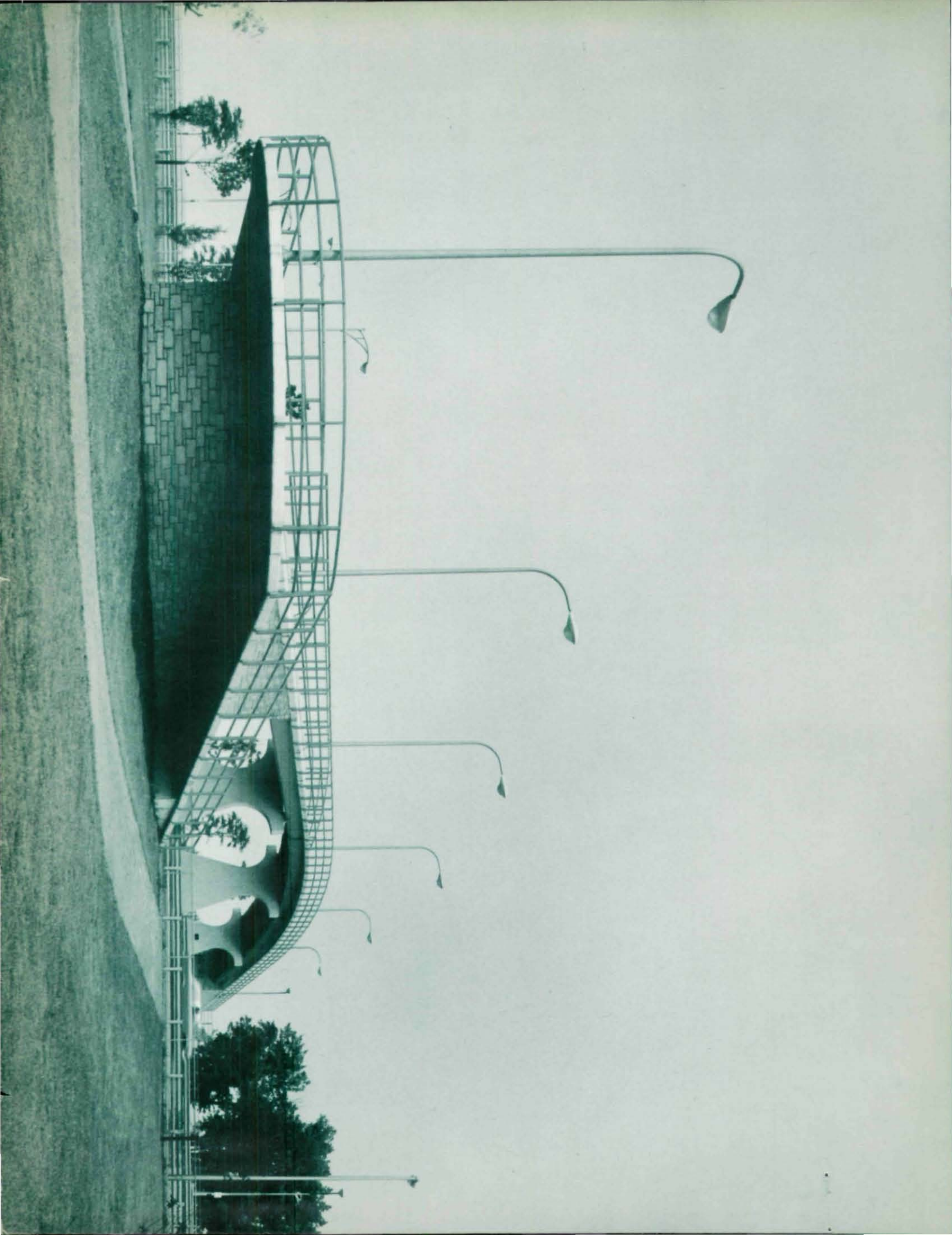
Wyoming State Highway Department, Cheyenne, Wyoming

**GENERAL CONTRACTOR**

Reiman-Wuerth Company, Cheyenne, Wyoming

**FABRICATOR**

Burkhardt Steel Company, Denver, Colorado





# AWARD OF MERIT 1967

## SPECIAL TYPE

**51st STREET PEDESTRIAN BRIDGE OVER LAKE SHORE DRIVE**  
CHICAGO, ILLINOIS

**DESIGNER**

Westenhoff & Novick, Inc., Chicago, Illinois

**OWNER**

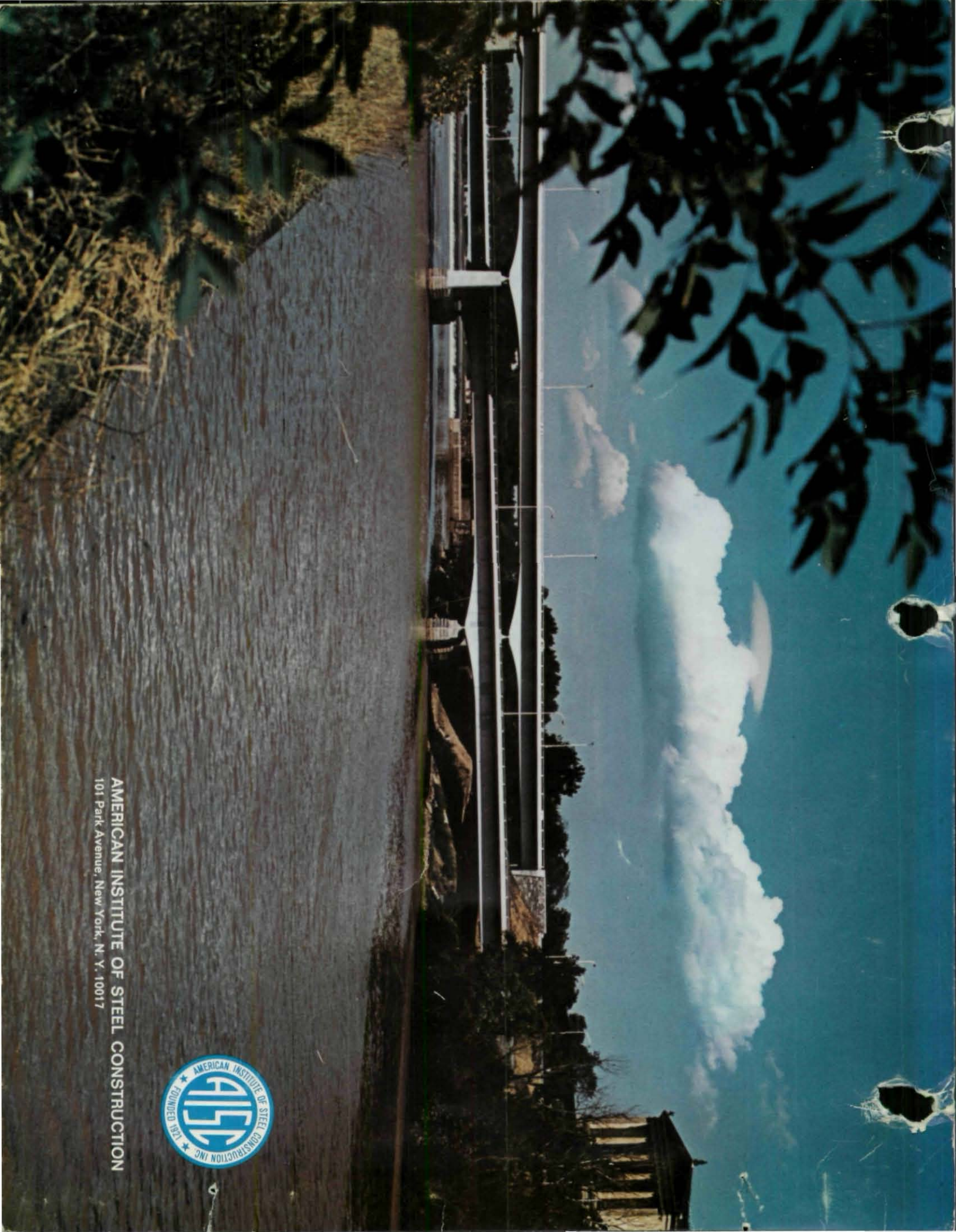
City of Chicago, Department of Public Works, Chicago, Illinois

**GENERAL CONTRACTOR**

J. M. Corbett Co., Chicago, Illinois

**FABRICATOR**

Bennett Industries, Inc., Peotone, Illinois



AMERICAN INSTITUTE OF STEEL CONSTRUCTION  
101 Park Avenue, New York, N. Y. 10017