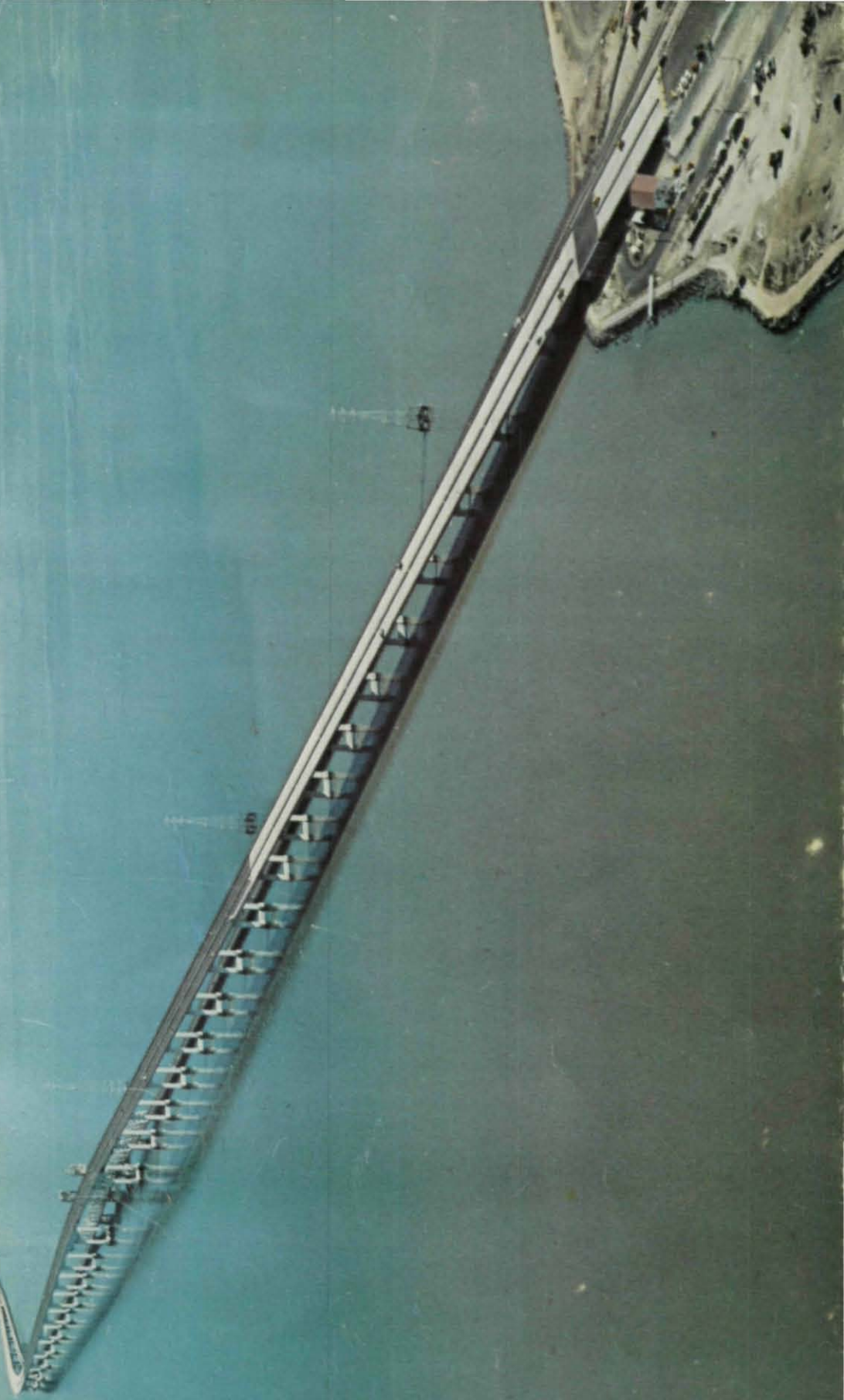
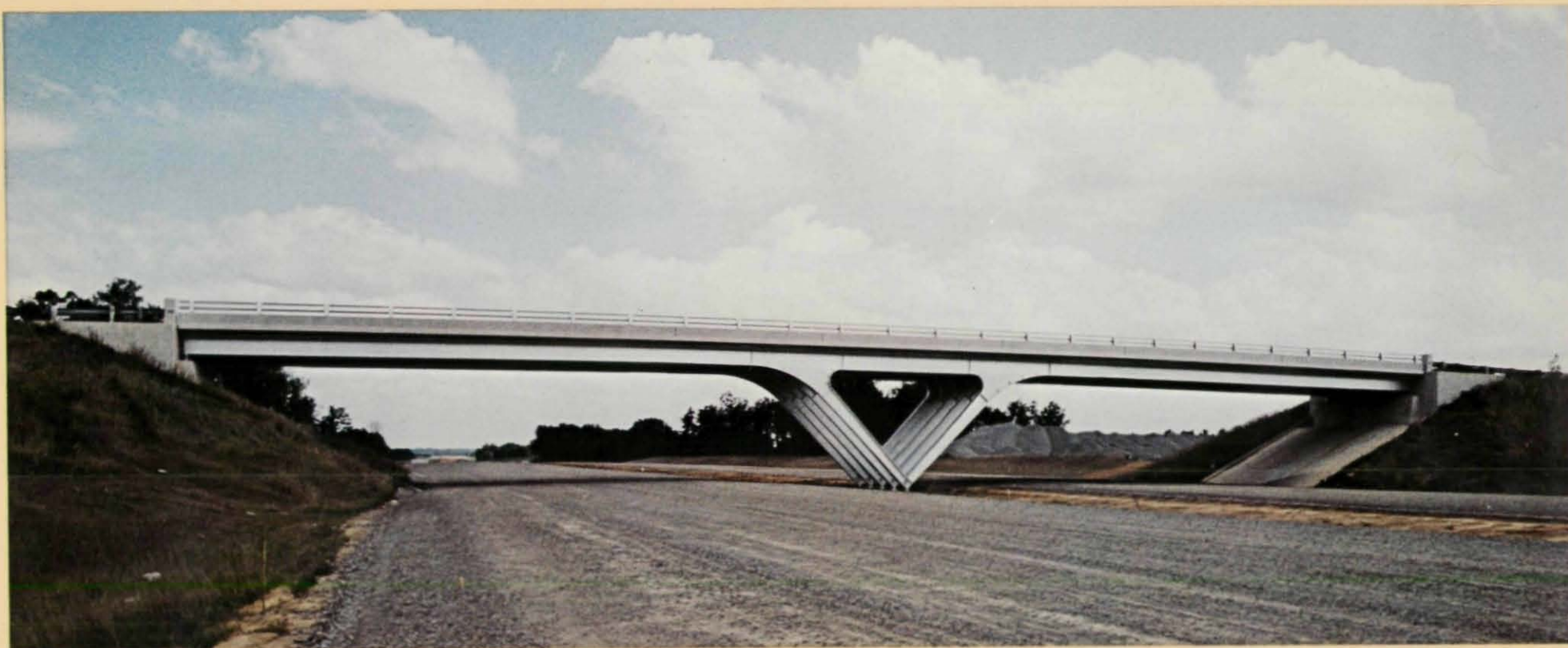


000051 158000

PRIZE BRIDGES 1968





AWARD CATEGORIES

LONG SPAN BRIDGES

Bridges having one or more spans of over 400 ft in length.

MEDIUM SPAN BRIDGES, HIGH CLEARANCE

Bridges with vertical clearance of 35 ft or more, costing over \$500,000, and having no single span (as measured by the supporting foundations) longer than 400 ft in length.

MEDIUM SPAN BRIDGES, LOW CLEARANCE

Bridges having vertical clearances of less than 35 ft, costing over \$500,000 and having no single span (as measured by the supporting foundations) longer than 400 ft in length.

SHORT SPAN BRIDGES

Bridges having fixed spans and costing less than \$500,000.

HIGHWAY GRADE SEPARATION BRIDGES

Bridges whose basic purpose is highway grade separation as contrasted to the above categories.

MOVABLE SPAN BRIDGES

Bridges having a movable span.

SPECIAL TYPE BRIDGES

Includes pedestrian overpass bridges, and other special purpose bridges not identifiable to one of the above categories.

PRIZE BRIDGES 1968

Steel bridges selected in the annual national competition conducted by the American Institute of Steel Construction as the most beautiful bridges opened to traffic in 1967.

AMERICAN INSTITUTE OF STEEL CONSTRUCTION
101 Park Avenue, New York, N. Y. 10017

JURY OF AWARDS



KENNETH DONAHUE

Director, Los Angeles Museum of Art
Los Angeles, California

FRANK H. NEWNAM, JR., F. ASCE

President, American Society of Civil Engineers
Executive Vice President, Lockwood, Andrews & Newnam, Inc.
Houston, Texas

GEORGE S. RICHARDSON, HON. M. ASCE

Richardson, Gordon & Associates
Pittsburgh, Pennsylvania

ARNOLD H. VOLLMER, F. ASCE

Aesthetic Consultant to the Connecticut Highway Department
Vollmer Associates
New York, New York

Left to Right

Arnold H. Vollmer
George S. Richardson
Kenneth Donahue
Frank H. Newnam, Jr.

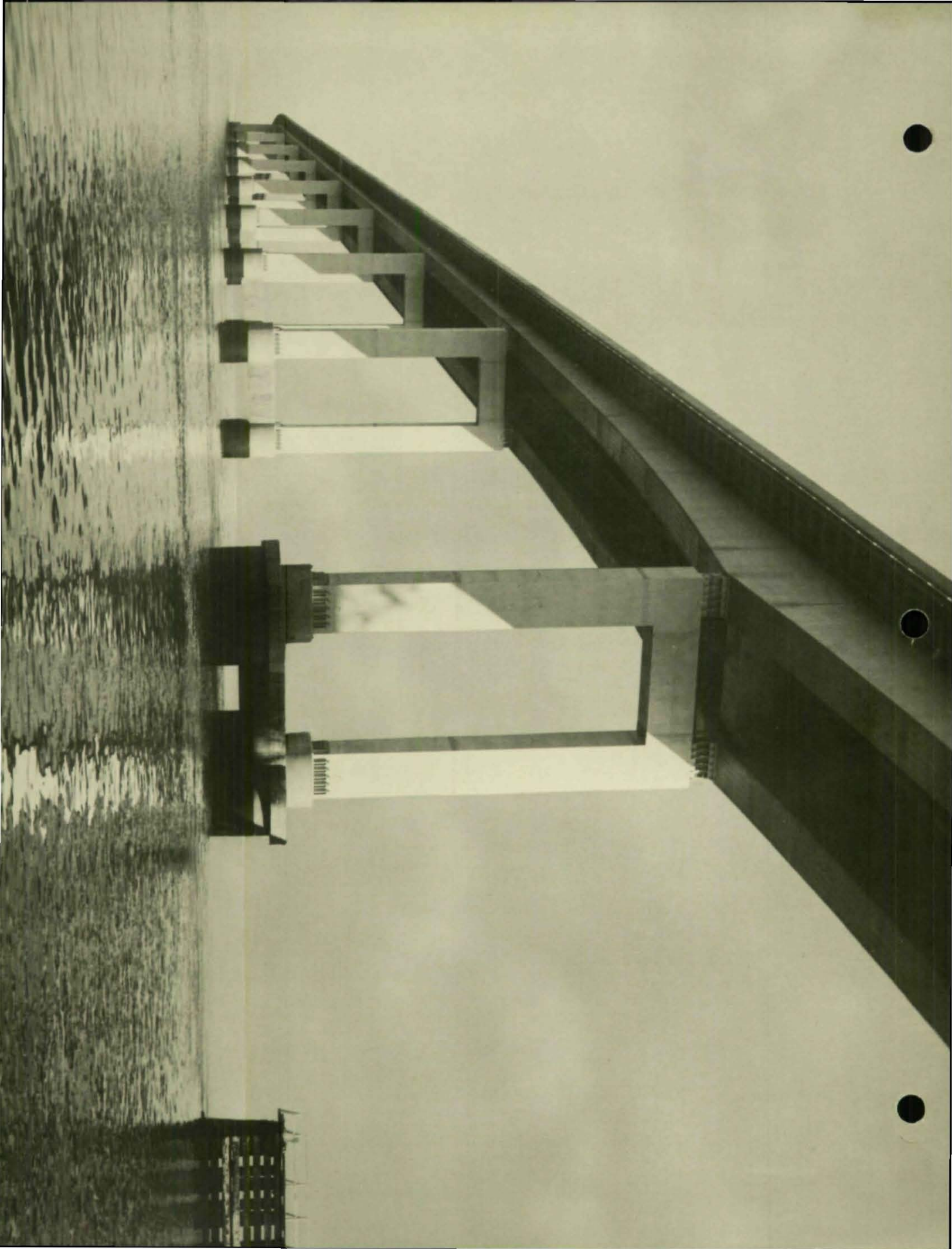
BEAUTY IN STEEL BRIDGES

The enduring beauty of steel bridges is eloquent tribute to the vision and skill of the men who plan, design and build them. The bridge designer of today is both artist and engineer. He understands the potential for strength and beauty which is inherent in steel structures, and he knows that aesthetic appearance can be achieved at no sacrifice of efficiency or economy. The simple grace of a highway overpass, no less than the majestic sweep of a river crossing, reflects a creative integration of structure, function and form, skillfully executed in beautiful bridges of steel.

To promote a more widespread appreciation of the aesthetics of steel bridges and to honor the architectural excellence of modern bridge design, the American Institute of Steel Construction sponsors an annual Prize Bridge Competition. Each year a distinguished Jury of Awards composed of leading art directors, architects and engineers, selects the steel bridges which it judges to be the most beautiful of those opened to traffic in the United States during the previous year.

To establish an equitable basis for competition, awards are made in each of several contest classifications. Size, cost and operating conditions determine the class in which each entry is eligible to compete. The prize winning bridges are marked with a stainless steel plaque, and the designers, owners and steel fabricators are awarded engraved certificates in recognition of their contribution and achievement.

The American Institute of Steel Construction sponsors this competition and awards the prizes in the belief that it is helping to render a public service by stimulating a deep and lasting interest in improved bridge design. Since 1957 the Institute has recorded the prize bridges for each year in a single volume.



PRIZE BRIDGE 1968**LONG SPAN****SAN MATEO-HAYWARD BRIDGE****DESIGNER**

Division of Bay Toll Crossings, State of California, San Francisco, California

OWNER

State of California, San Francisco, California

GENERAL CONTRACTOR

Superstructure: Murphy Pacific Bridge Builders
Emeryville, California

Substructure: Pomeroy-Gerwick-Steers
San Francisco, California

FABRICATOR

Murphy Pacific Corporation, Emeryville, California

JURORS' COMMENTS

"This is a very beautiful bridge in every aspect. Every detail has been carefully planned and skillfully executed. The steel bents are so well proportioned that they constitute sculpture in a very real sense. The long, slender spans illustrate what can be done with orthotropic plate deck construction."

PRIZE BRIDGE 1968

MEDIUM SPAN, HIGH CLEARANCE

FULTON BRIDGES

OVER THE WEST BRANCH OF THE SUSQUEHANNA RIVER

DESIGNER

Brookhart & Tyo, Harrisburg, Pennsylvania

OWNER

Commonwealth of Pennsylvania, Harrisburg, Pennsylvania

GENERAL CONTRACTOR

The Penker Construction Co., Cincinnati, Ohio

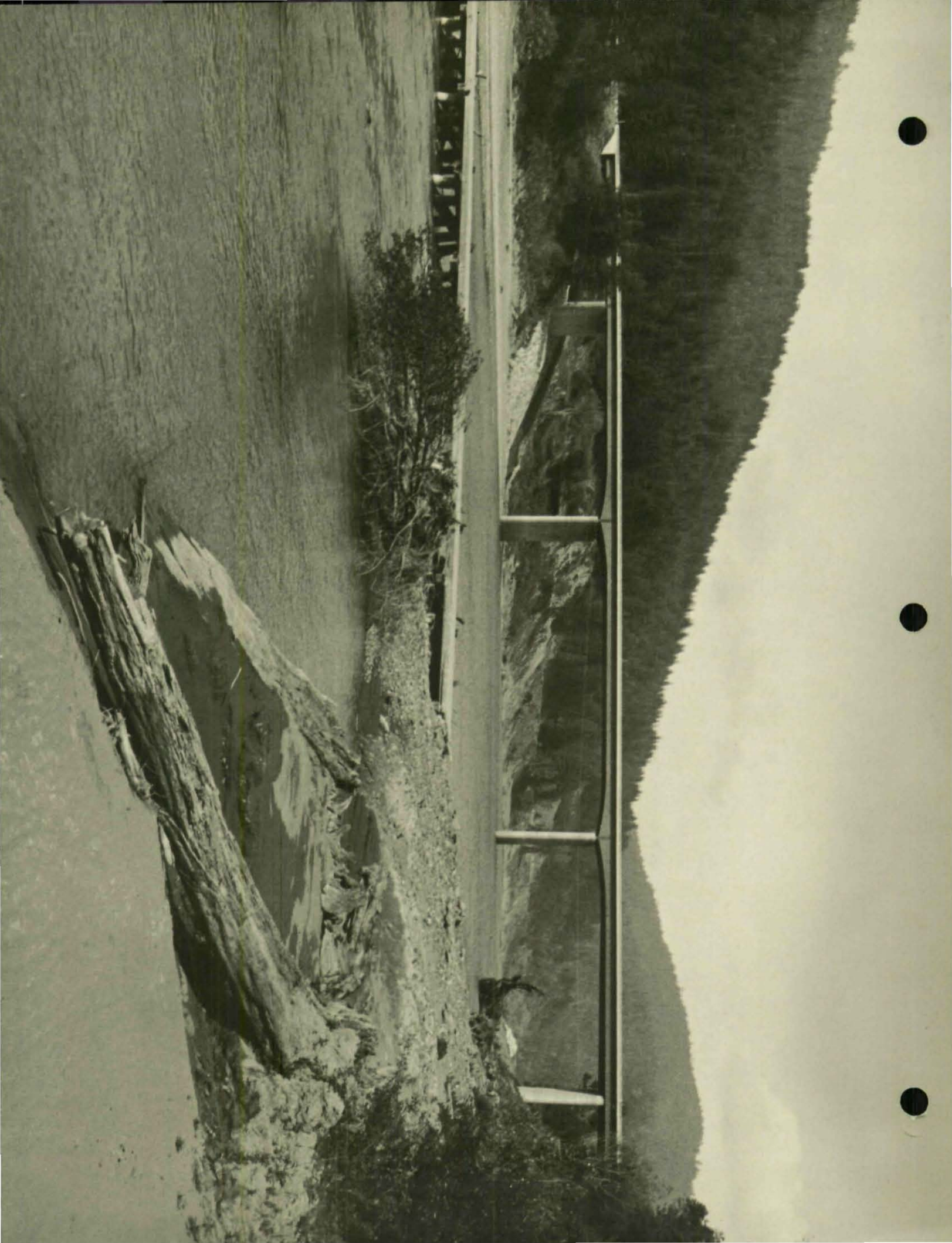
FABRICATOR

American Bridge Division, United States Steel Corporation,
Pittsburgh, Pennsylvania

JURORS' COMMENTS

"This is a finely proportioned structure that is clean cut in appearance. It has a simple elegance which gives it character. The piers are sensitively designed and seem to flow into the bridge to become an integral part of it."





PRIZE BRIDGE 1968

MEDIUM SPAN, LOW CLEARANCE

EEL RIVER BRIDGE AND OVERHEAD

DESIGNER

Department of Public Works, State of California, Sacramento, California

OWNER

State of California, San Francisco, California

GENERAL CONTRACTOR

Fruin-Colnon Contracting Co., San Mateo, California

FABRICATOR

Kaiser Steel Corporation, Oakland, California

JURORS' COMMENTS

"This is a very simple, straightforward, and well handled structure. It is attractively proportioned. The span lengths are pleasing in their relationship to one another. The overall effect is one of elegance."

PRIZE BRIDGE 1968

SHORT SPAN

SATSOP RIVER BRIDGES

DESIGNER

Washington State Highway Commission, Olympia, Washington

OWNER

State of Washington, Olympia, Washington

GENERAL CONTRACTOR

Troy T. Burnham Company, Seattle, Washington

FABRICATOR

Northwest Steel Fabricators, Inc., Vancouver, Washington

JURORS' COMMENTS

*"This is an outstanding piece of contemporary sculpture.
It is cleanly articulated. The imaginative treatment of the arch
bracing is especially well handled."*





PRIZE BRIDGE 1968

HIGHWAY GRADE SEPARATION

BLACKWELL INTERCHANGE BRIDGE

DESIGNER

Bridge Design Division, Arkansas State Highway Department,
Little Rock, Arkansas

OWNER

State of Arkansas, Little Rock, Arkansas

GENERAL CONTRACTOR

H. N. Rodgers & Sons Co., Memphis, Tennessee

FABRICATOR

Pidgeon-Thomas Iron Company, Memphis, Tennessee

JURORS' COMMENTS

"This is an attractively proportioned bridge. The unusual and imaginative treatment of the center pier creates an interesting and attractive departure from the routine design of this type of bridge. The elimination of the side piers provides clean, strong lines as well as roadway safety."

PRIZE BRIDGE 1968

SPECIAL TYPE

GUY A. WEST BRIDGE

DESIGNER

The Spink Corporation, Sacramento, California

OWNER

City of Sacramento, California

GENERAL CONTRACTOR

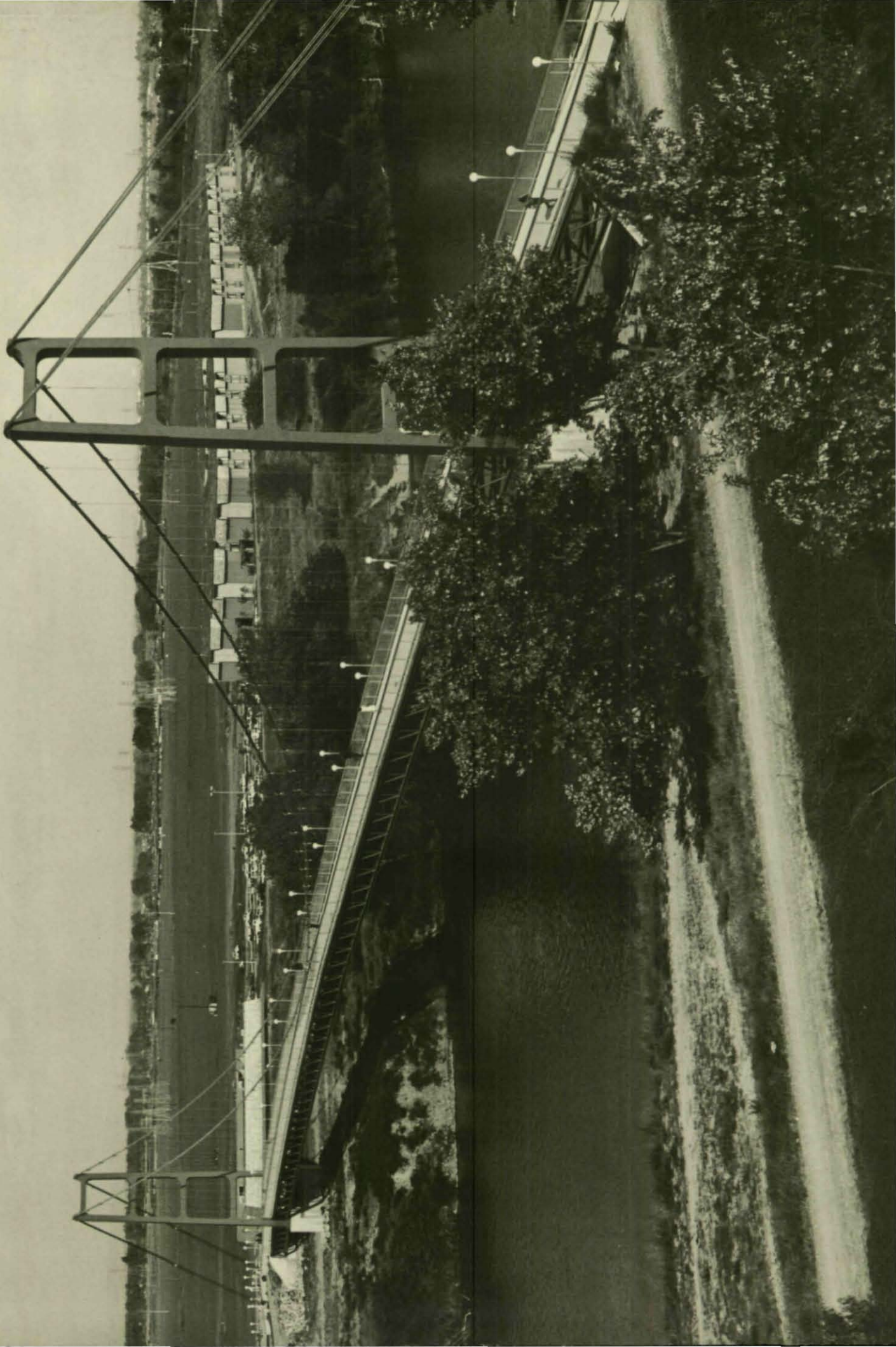
A. Teichert & Son, Inc., Sacramento, California

FABRICATOR

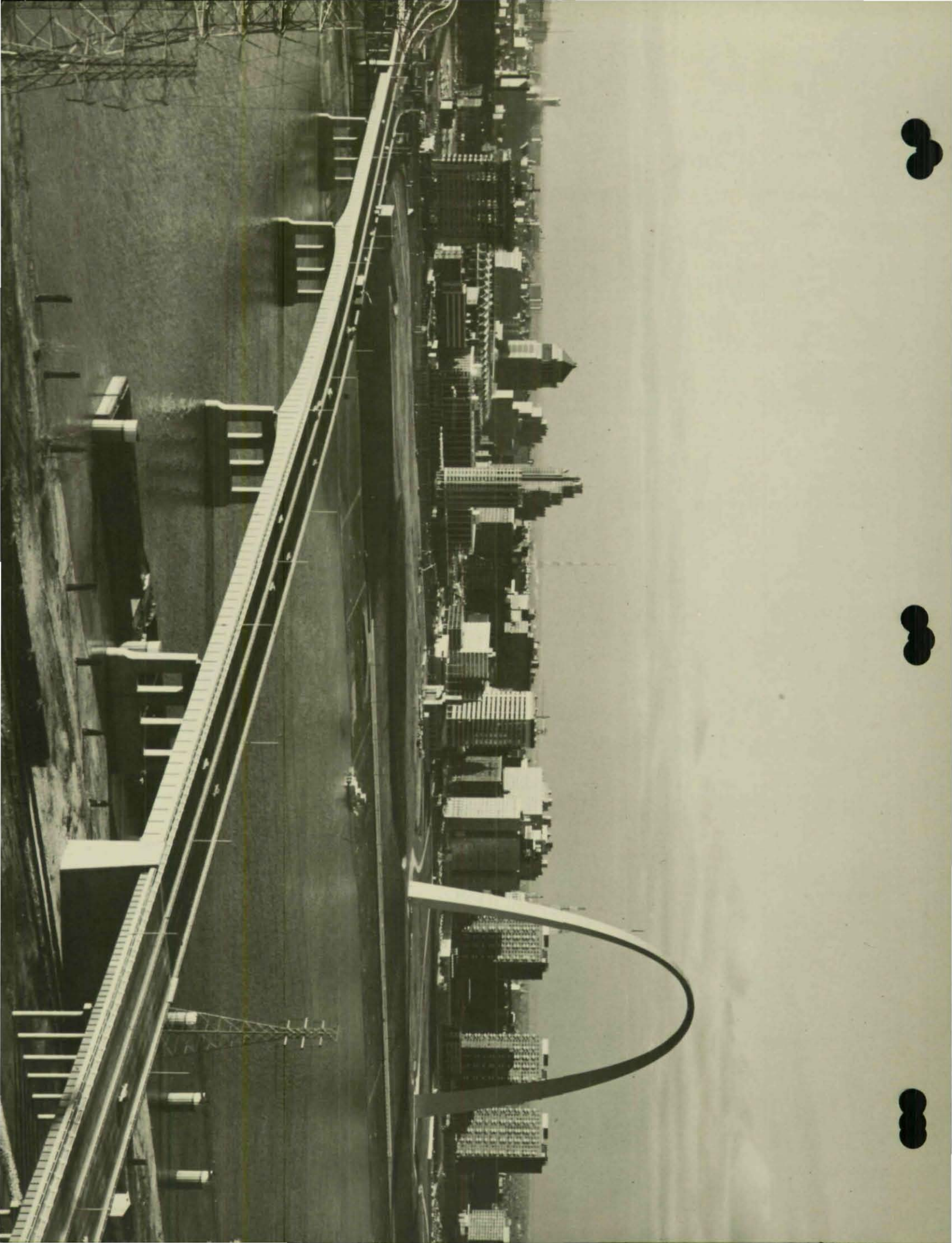
American Bridge Division, United States Steel Corporation,
Pittsburgh, Pennsylvania

JURORS' COMMENTS

"This graceful bridge is a logical solution for a pedestrian crossing over a wide waterway. The designer has achieved a pleasing continuity between the approach spans and the 600 foot long suspended span."



000459



AWARD OF MERIT 1968

LONG SPAN

POPLAR STREET BRIDGE

BETWEEN ST. LOUIS, MISSOURI AND EAST ST. LOUIS, ILLINOIS

DESIGNER

Sverdrup & Parcel and Associates, Inc., St. Louis, Missouri

OWNERS

State of Missouri, Jefferson City, Missouri and State of Illinois, Springfield, Illinois

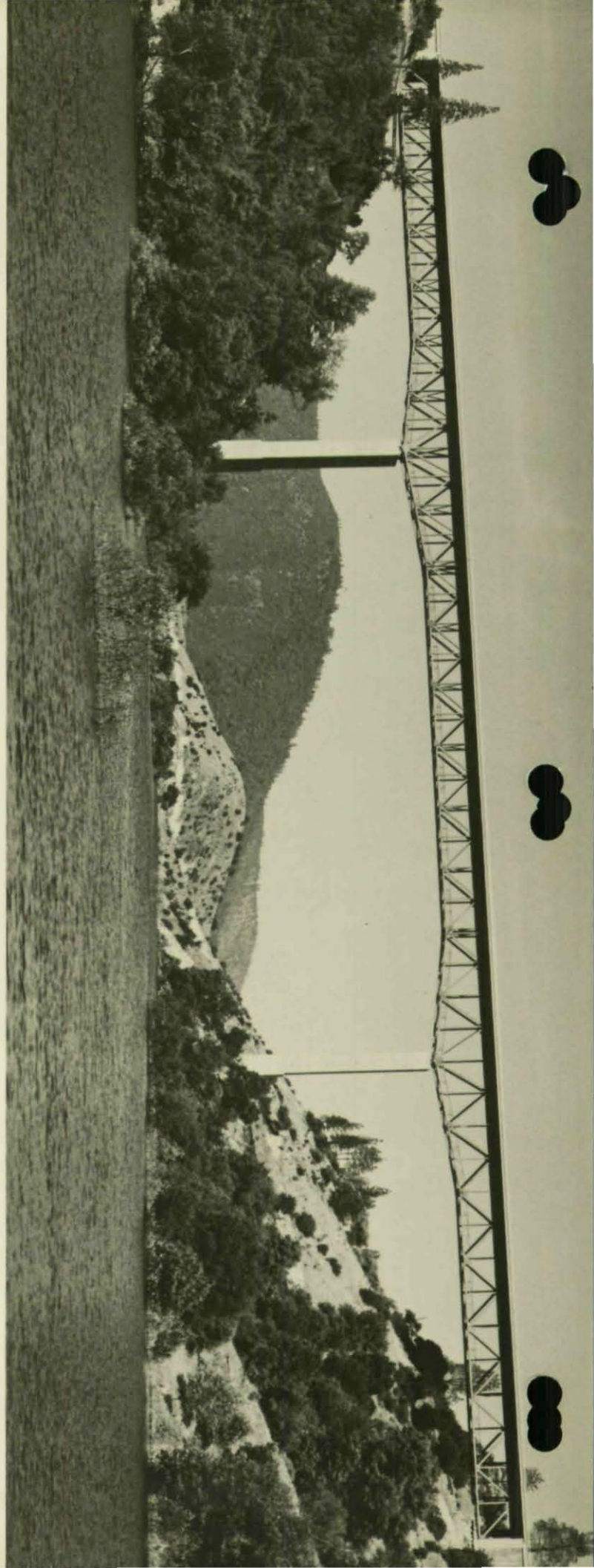
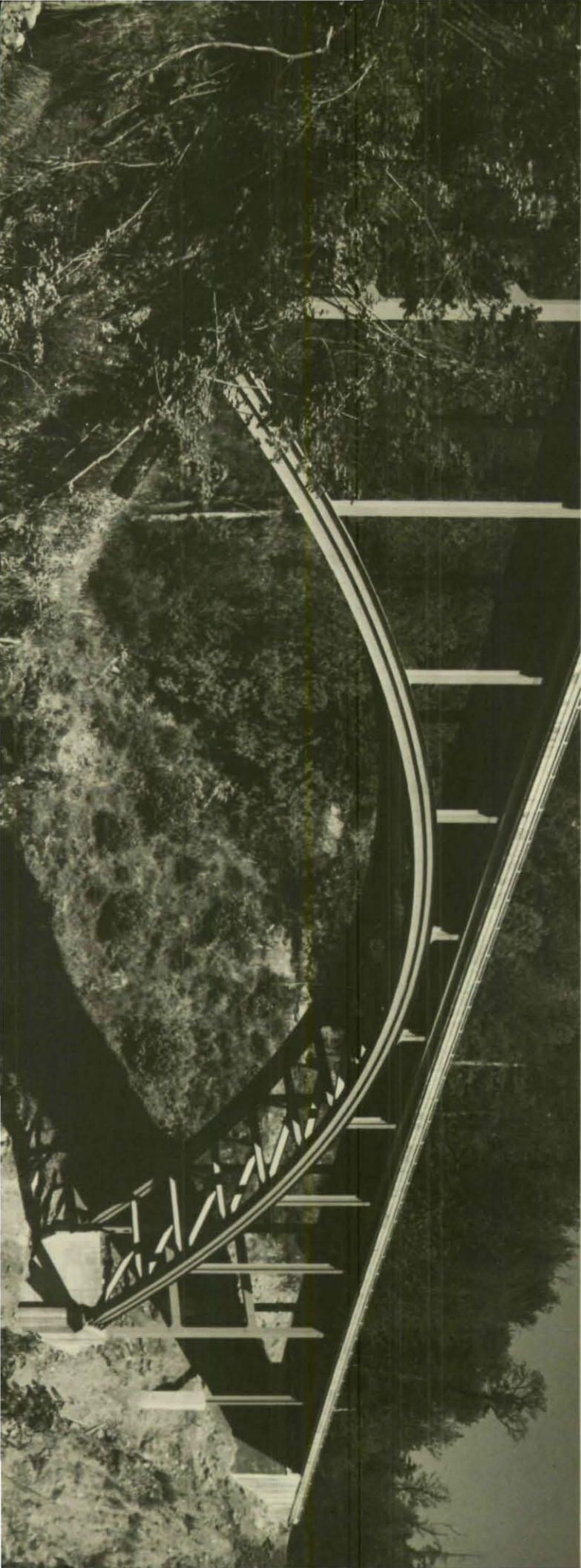
GENERAL CONTRACTORS

Superstructure: Bethlehem Steel Corporation, Bethlehem, Pennsylvania

Substructure: Dravo Corporation, Pittsburgh, Pennsylvania

FABRICATOR

Bethlehem Steel Corporation, Bethlehem, Pennsylvania



LONG SPAN

**SOUTH FORK FEATHER RIVER
(B. ABBOTT GOLDBERG) BRIDGE**
NEAR FEATHER FALLS, CALIFORNIA

DESIGNER

Department of Water Resources, State of California, Sacramento, California

OWNER

State of California, Sacramento, California

GENERAL CONTRACTORS

Rothschild, Raffin & Weirick, Inc. and Piombo Construction Company, San Carlos, California

FABRICATOR

Bethlehem Steel Corporation, Bethlehem, Pennsylvania

A W A R D O F M E R I T 1 9 6 8

MEDIUM SPAN, HIGH CLEARANCE

CORN CREEK BRIDGE
MOSSYROCK, WASHINGTON

DESIGNER

Washington State Highway Commission, Olympia, Washington

OWNER

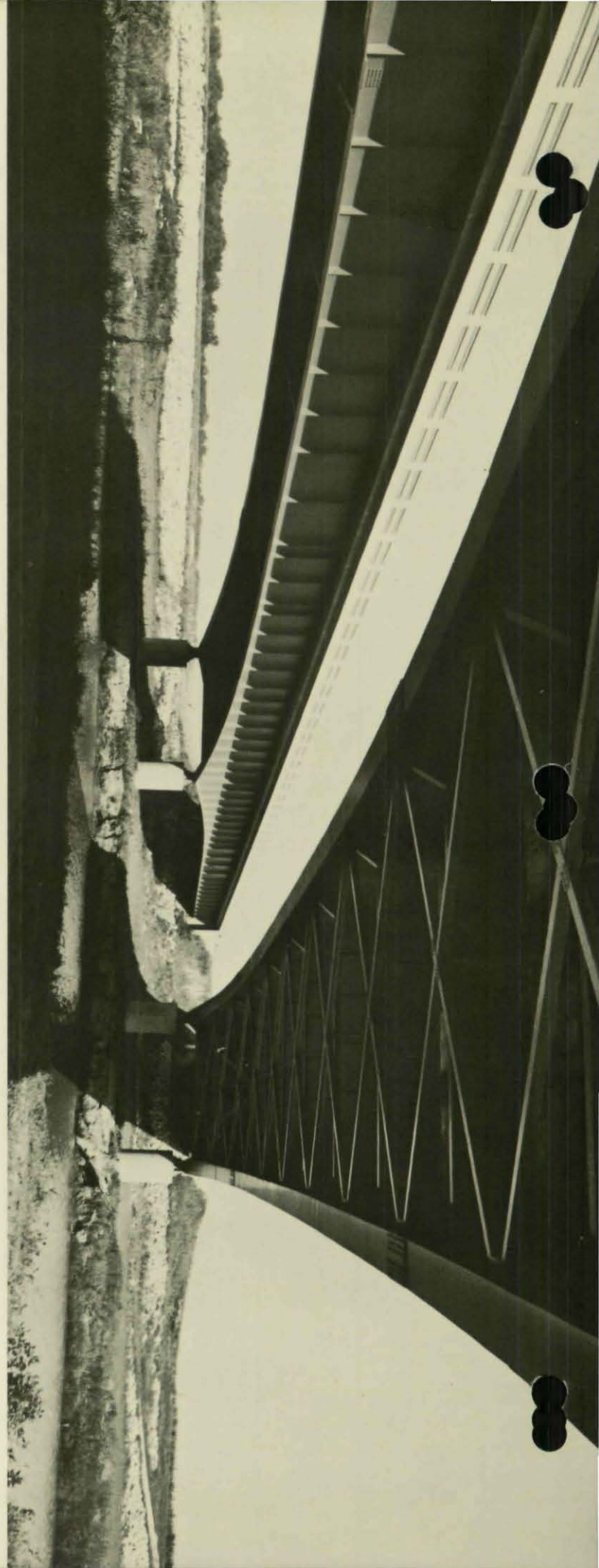
State of Washington, Olympia, Washington

GENERAL CONTRACTOR

Gibbons & Reed Company, Salt Lake City, Utah

FABRICATOR

Northwest Steel Fabricators, Inc., Vancouver, Washington



MEDIUM SPAN, LOW CLEARANCE

PROJECT I-29-5 (8) 97

NEAR RIVER SIOUX, HARRISON COUNTY, IOWA

DESIGNER

Iowa State Highway Commission, Ames, Iowa

OWNER

State of Iowa, Ames, Iowa

GENERAL CONTRACTOR

Jensen Construction Company, Des Moines, Iowa

FABRICATOR

Bennett Industries, Inc., Peotone, Illinois

A W A R D O F M E R I T 1 9 6 8

SHORT SPAN

GORGE DAM ACCESS BRIDGE

NEAR NEWHALEM, WASHINGTON

DESIGNER

Harry R. Powell and Associates, Seattle, Washington

OWNER

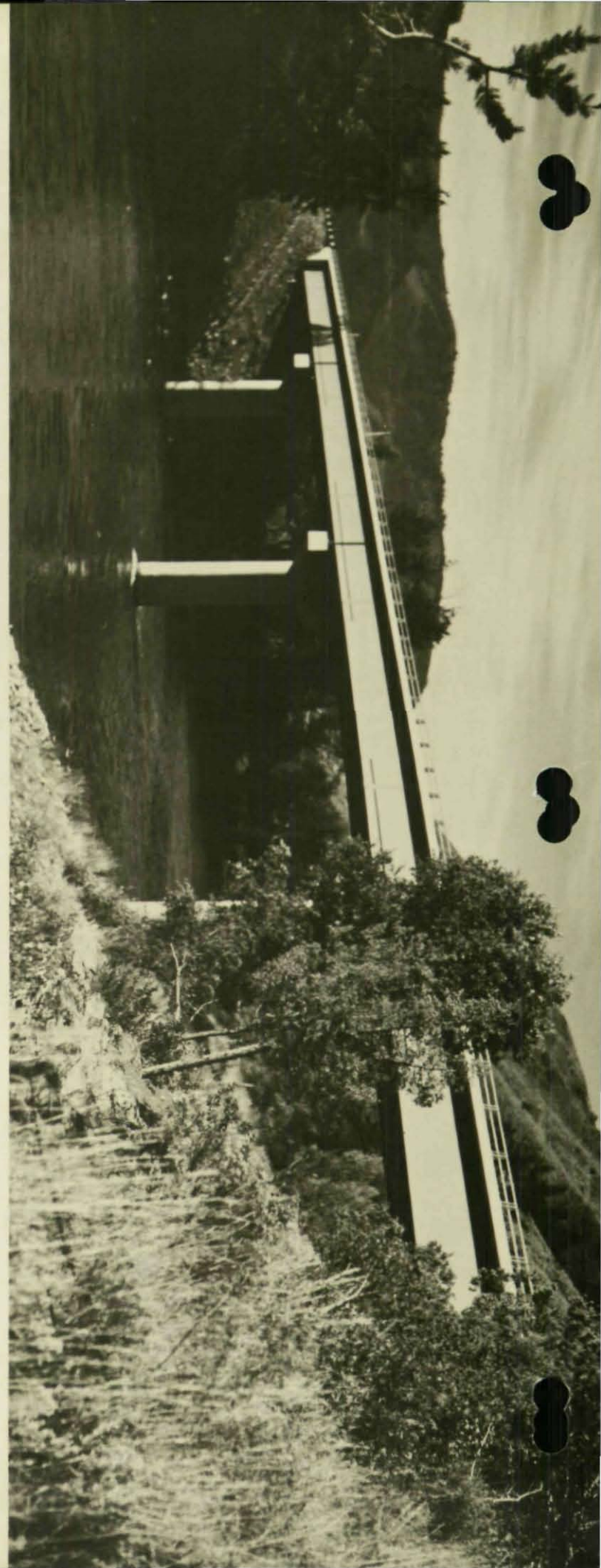
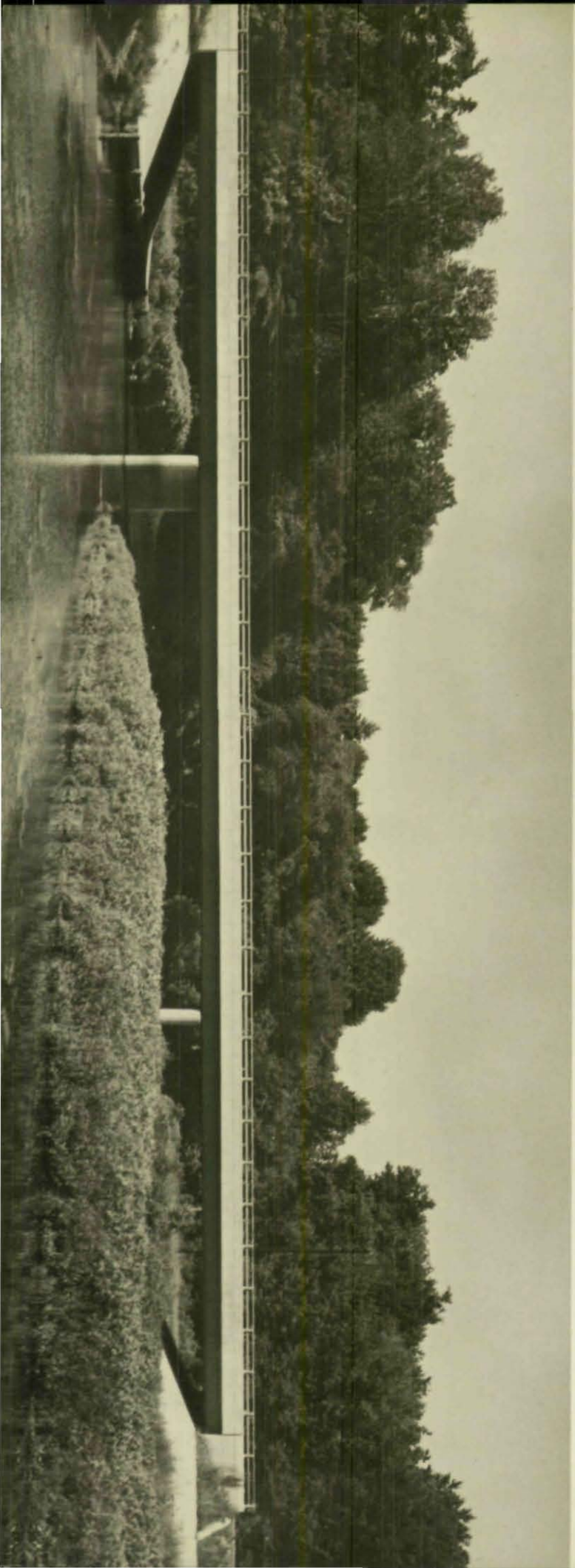
City of Seattle, Washington

GENERAL CONTRACTOR

Lee T. Dulin Construction Co., Centralia, Washington

FABRICATOR

Western Steel Company, Salt Lake City, Utah



SHORT SPAN**BRIDGE OVER SNAKE RIVER #2**

JACKSON, WYOMING

DESIGNER

Wyoming Highway Department, Cheyenne, Wyoming

OWNER

State of Wyoming, Cheyenne, Wyoming

GENERAL CONTRACTOR

Ellingford Bros., Inc., Evanston, Wyoming

FABRICATOR

The Midwest Steel & Iron Works Co., Denver, Colorado

A W A R D O F M E R I T 1 9 6 8**SHORT SPAN****CONAWAYS ROAD OVER LITTLE PATUXENT RIVER**

CONAWAYS, MARYLAND

DESIGNER

Rummell, Klepper & Kahl, Baltimore, Maryland

OWNER

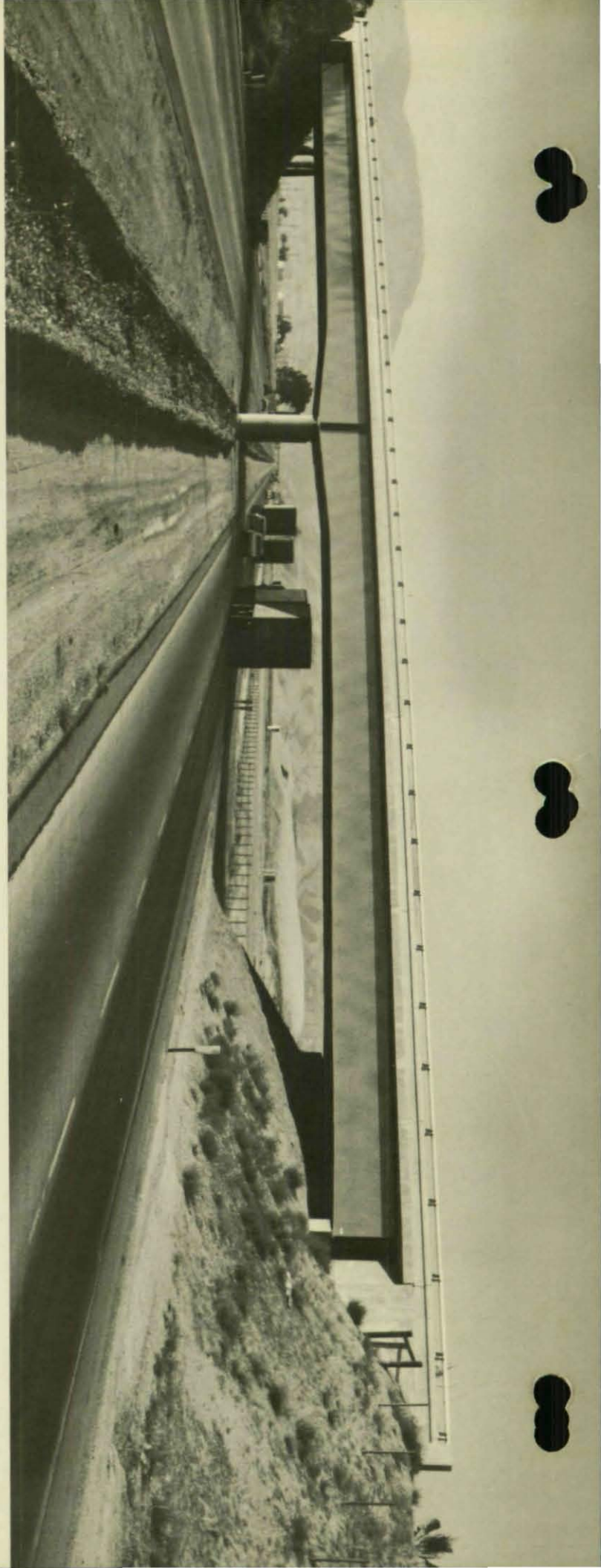
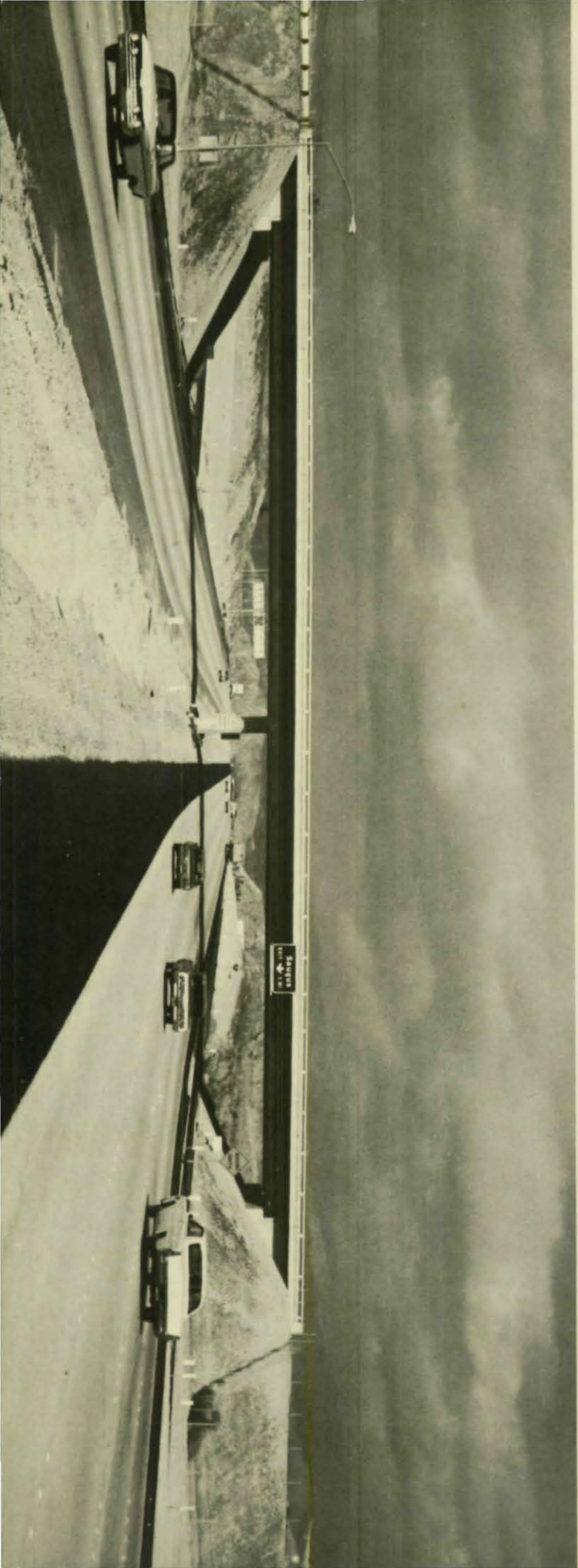
Anne Arundel County, Maryland

GENERAL CONTRACTOR

Warfield-Hamm Construction Co., Inc., Woodbine, Maryland

FABRICATOR

Cumberland Bridge Company, Camp Hill, Pennsylvania



HIGHWAY GRADE SEPARATION

ROUTE 5/99 SEPARATION BRIDGE AT WHEELER RIDGE, CALIFORNIA

DESIGNER

State of California, Sacramento, California

OWNER

State of California, Sacramento, California

GENERAL CONTRACTOR

Tumblin Company, Bakersfield, California

FABRICATOR

Kaiser Steel Corporation, Oakland, California

AWARD OF MERIT 1968

HIGHWAY GRADE SEPARATION

VALENCIA BOULEVARD OVERCROSSING BRIDGE VALENCIA, CALIFORNIA

DESIGNER

State of California, Sacramento, California

OWNER

State of California, Sacramento, California

GENERAL CONTRACTOR

E. C. Young, El Cajon, California

FABRICATOR

American Bridge Division, United States Steel Corporation, Pittsburgh, Pennsylvania



AMERICAN INSTITUTE OF STEEL CONSTRUCTION
101 Park Avenue, New York, N. Y. 10017

