

P R I Z E B R I D G E S 1 9 6 9

AWARD

CATEGORIES

LONG SPAN BRIDGES

Bridges having one or more spans of over 400 ft in length.

MEDIUM SPAN BRIDGES, HIGH CLEARANCE

Bridges with vertical clearance of 35 ft or more, costing over \$500,000, and having no single span (as measured by the supporting foundations) longer than 400 ft in length.

MEDIUM SPAN BRIDGES, LOW CLEARANCE

Bridges having vertical clearances of less than 35 ft, costing over \$500,000 and having no single span (as measured by the supporting foundations) longer than 400 ft in length.

SHORT SPAN BRIDGES

Bridges having fixed spans and costing less than \$500,000.

HIGHWAY GRADE SEPARATION BRIDGES

Bridges whose basic purpose is highway grade separation as contrasted to the above categories.

MOVABLE SPAN BRIDGES

Bridges having a movable span.

SPECIAL TYPE BRIDGES

Includes pedestrian overpass bridges, and other special purpose bridges not identifiable to one of the above categories.



PRIZE BRIDGES 1969

Steel bridges selected in the annual national competition conducted by the American Institute of Steel Construction as the most beautiful bridges opened to traffic in 1968.

AMERICAN INSTITUTE OF STEEL CONSTRUCTION
101 Park Avenue, New York, N.Y. 10017

JURY OF AWARDS



LT. GEN. WILLIAM F. CASSIDY, F.ASCE

Chief of Engineers, U. S. Army
Washington, D. C.

WALTER S. DOUGLAS, F.ASCE

Vice President, American Institute of Consulting Engineers
Senior Partner, Parsons, Brinckerhoff, Quade & Douglas
New York, New York

JOHN K. MINASIAN, F.ASCE

Consulting Structural Engineer
Long Beach, California

THOMAS M. NILES, F.ASCE

President, American Society of Civil Engineers
Partner, Greeley and Hansen
Chicago, Illinois

ELLIOT L. WHITAKER, FAIA

Director, School of Architecture
Ohio State University
Columbus, Ohio

L. to r.: Minasian, Cassidy, Whitaker, Niles, Douglas

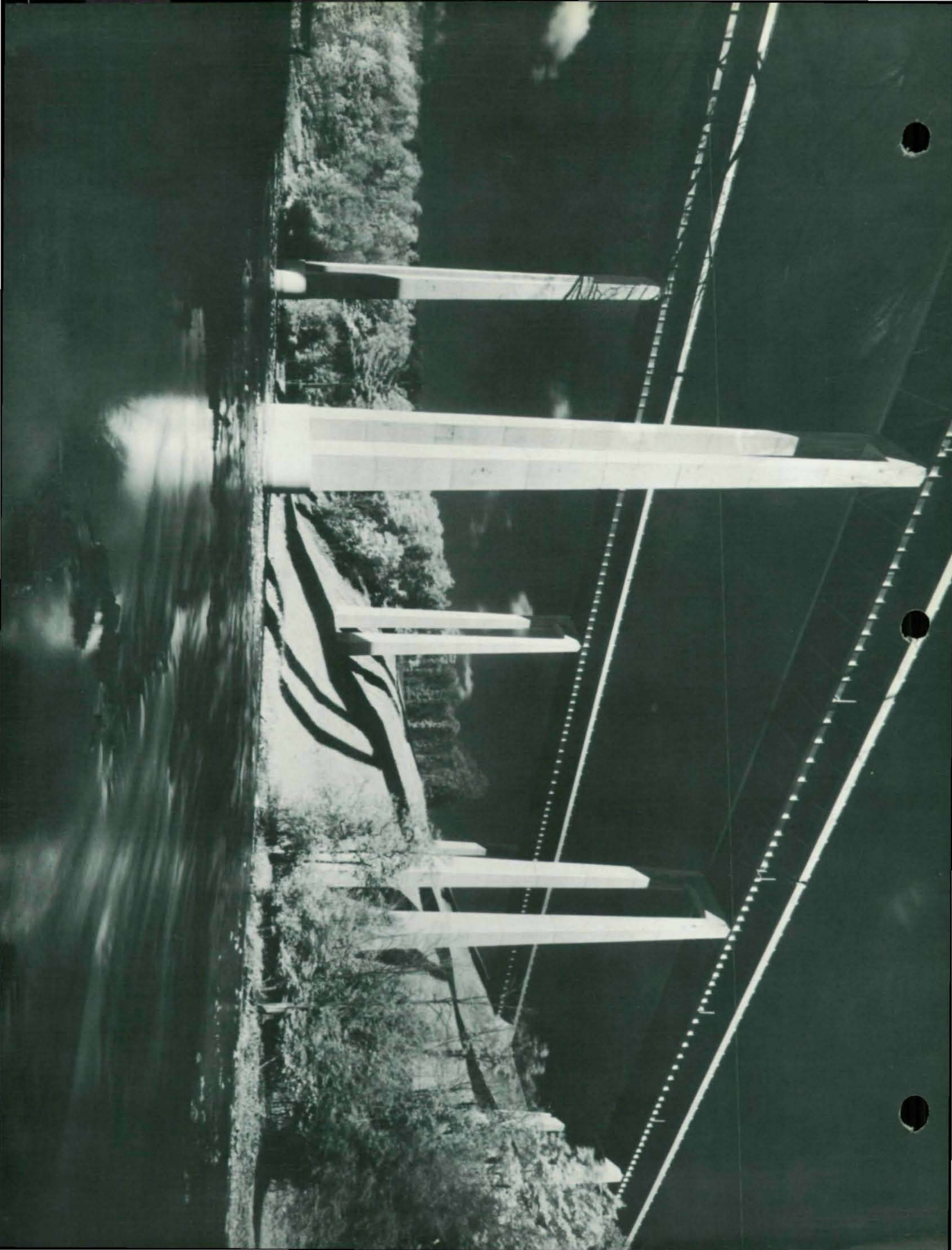
BEAUTY IN STEEL BRIDGES

The enduring beauty of steel bridges is eloquent tribute to the vision and skill of the men who plan, design and build them. The bridge designer of today is both artist and engineer. He understands the potential for strength and beauty which is inherent in steel structures, and he knows that aesthetic appearance can be achieved at no sacrifice of efficiency or economy. The simple grace of a highway overpass, no less than the majestic sweep of a river crossing, reflects a creative integration of structure, function and form, skillfully executed in beautiful bridges of steel.

To promote a more widespread appreciation of the aesthetics of steel bridges and to honor the architectural excellence of modern bridge design, the American Institute of Steel Construction sponsors an annual Prize Bridge Competition. Each year a distinguished Jury of Awards composed of leading educators, architects, and engineers, selects the steel bridges which it judges to be the most beautiful of those opened to traffic in the United States during the previous year.

To establish an equitable basis for competition, awards are made in each of several contest classifications. Size, cost and operating conditions determine the class in which each entry is eligible to compete. The prize winning bridges are marked with a stainless steel plaque, and the designers, owners and steel fabricators are awarded engraved certificates in recognition of their contribution and achievement.

The American Institute of Steel Construction sponsors this competition and awards the prizes in the belief that it is helping to render a public service by stimulating a deep and lasting interest in improved bridge design. Since 1957 the Institute has recorded the prize bridges for each year in a single volume.



PRIZE BRIDGE 1969
MEDIUM SPAN, HIGH CLEARANCE

VIA DUCT HIGHWAY BRIDGES

DESIGNER

Brookhart & Tyo, Harrisburg, Pennsylvania

OWNER

Commonwealth of Pennsylvania, Harrisburg, Pennsylvania

GENERAL CONTRACTOR

Glasgow, Inc., Glenside, Pennsylvania

FABRICATOR

Fort Pitt Bridge Works, Subsidiary of Magnetics, Inc., Canonsburg, Pennsylvania

JURORS' COMMENTS

"These bridges show a sensitive relation to their environment. The clean lines of the columns and the wide separation of the two roadways add to their simplicity and elegance. This is truly a beautiful pair of bridges."

PRIZE BRIDGE 1969
MEDIUM SPAN, LOW CLEARANCE

U.S. ROUTE 6 OVER MAUMEE RIVER

DESIGNER

T. C. Biebesheimer Engineering Co., Toledo, Ohio

OWNER

State of Ohio, Columbus, Ohio

GENERAL CONTRACTOR

The Baker and Hickey Co., Columbus, Ohio

FABRICATORS

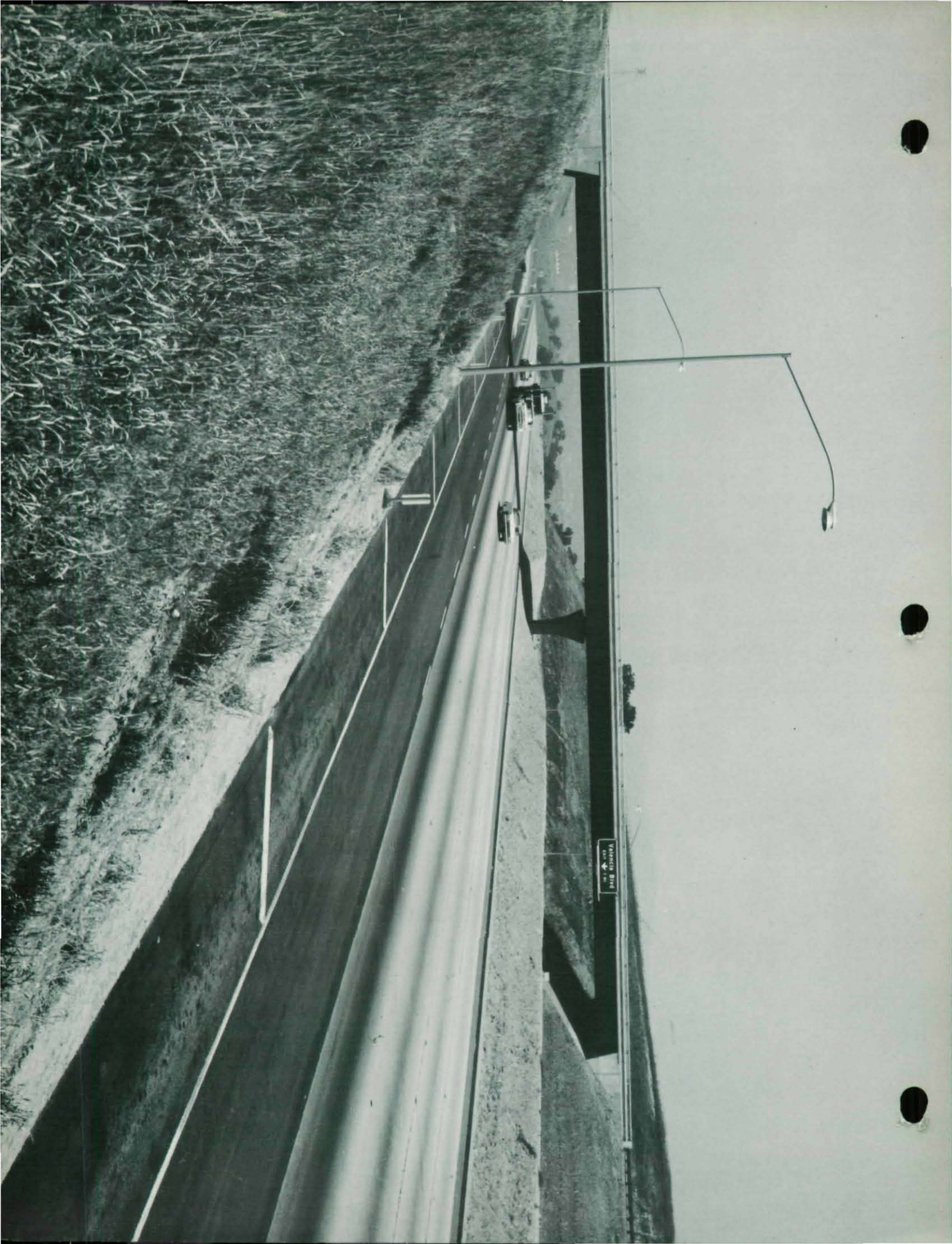
Nashville Bridge Company, Nashville, Tennessee
Fort Pitt Bridge Works, Subsidiary of Magnetics, Inc., Canonsburg, Pennsylvania

JURORS' COMMENTS

"This is a low key, quiet bridge that is well proportioned, simple, and harmonious. The vertical stiffeners, uniformly spaced, are subdued in appearance and blend well with the massive piers. The entire structure blends with and becomes a natural part of the landscape."

00899470





1245880
D
PRIZE BRIDGE 1969

HIGHWAY GRADE SEPARATION

MCBEAN PARKWAY OVERCROSSING

DESIGNER

California Division of Highways, Bridge Department, Sacramento, California

OWNER

State of California, Sacramento, California

GENERAL CONTRACTOR

Silva & Hill Construction Co., So. San Gabriel, California

FABRICATOR

Kaiser Steel Corporation, Oakland, California

JURORS' COMMENTS

"This is a beautiful example of a two-span bridge. It is nicely proportioned. The flare of the center column is subtly reflected in the taper of the end abutments and creates an interesting and harmonious effect. The elimination of the side piers provides attractive, strong lines and complies with the new highway safety requirements."

PRIZE BRIDGE 1969
MOVABLE SPAN

TWIN BASCULE SPANS OVER NORTH CHANNEL

LAKE PONTCHARTRAIN BRIDGE

DESIGNER

David Volkert & Associates, Washington, D. C.

OWNER

Greater New Orleans Expressway Commission, Metairie, Louisiana

GENERAL CONTRACTOR

Brown & Root, Inc., Houston, Texas

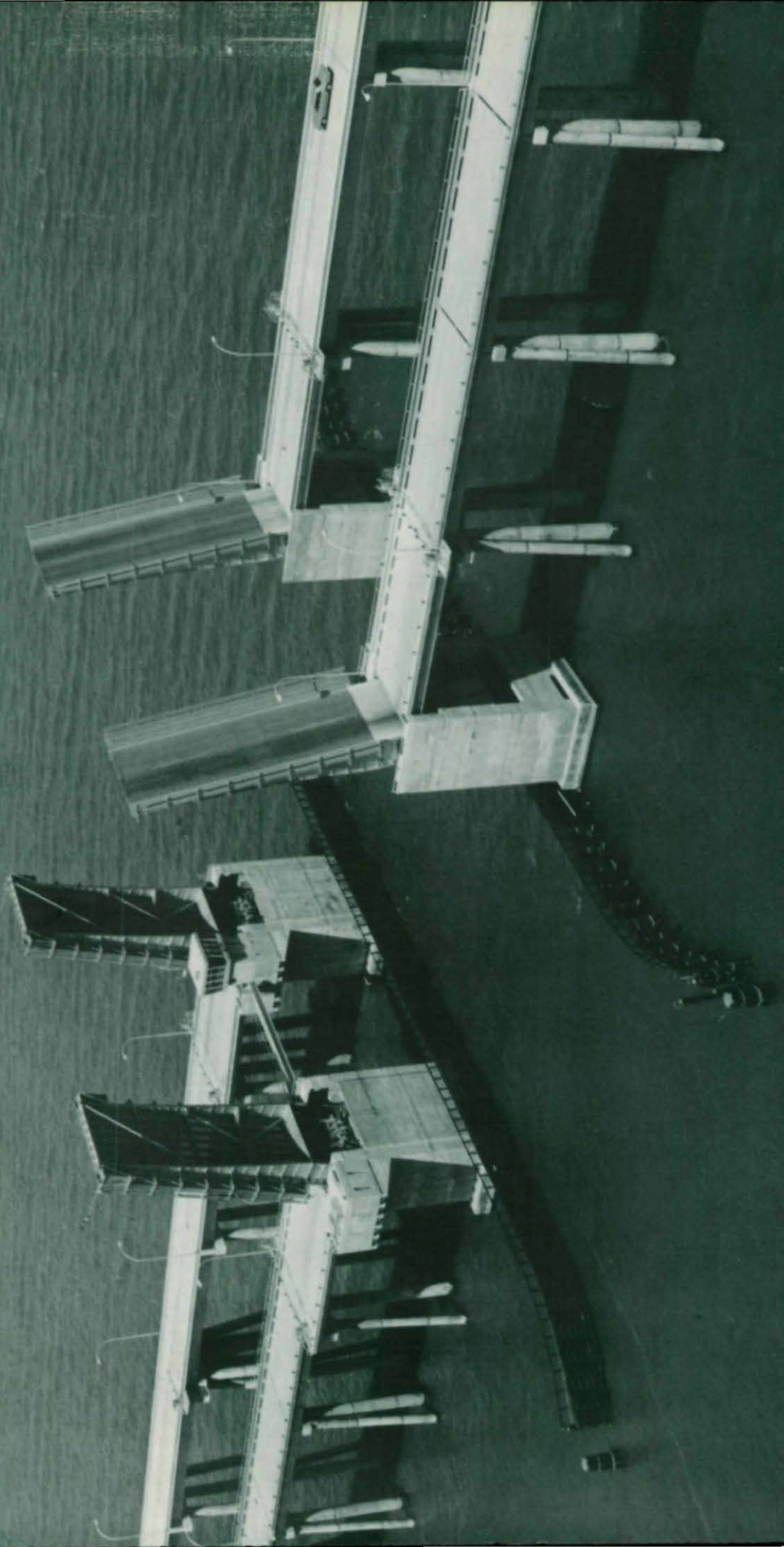
FABRICATOR

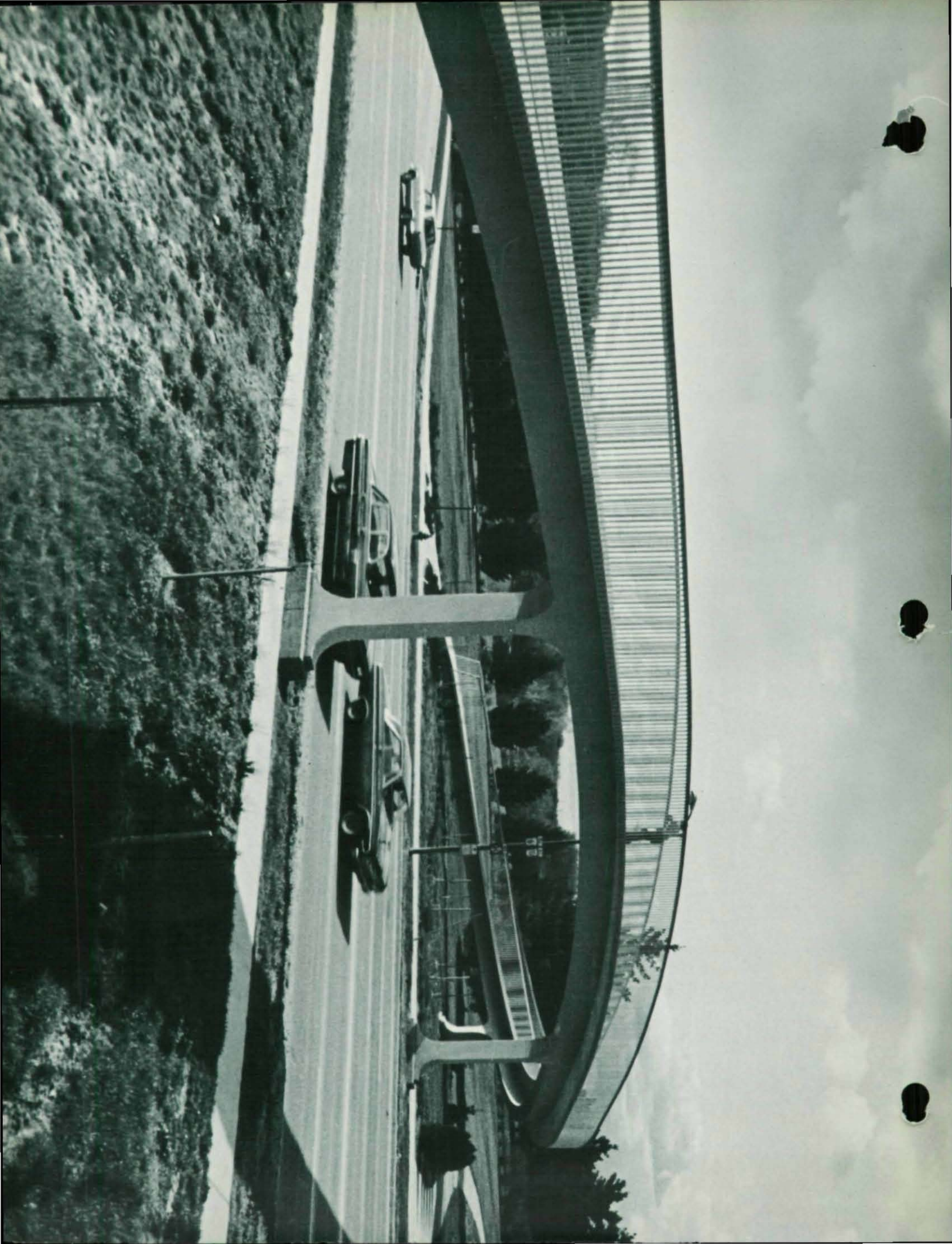
Nashville Bridge Company, Nashville, Tennessee

JURORS' COMMENTS

"Here is a simple and handsomely detailed bridge. Its subdued treatment of the superstructure presents a clean, unobtrusive effect and avoids the clutter often found in movable span bridges."

188472





PRIZE BRIDGE 1969

SPECIAL TYPE

DODGE STREET OVERPASS

DESIGNER

William H. Durand, P.E., Omaha, Nebraska

OWNER

City of Omaha, Omaha, Nebraska

GENERAL CONTRACTOR

Foster-Smetana Company, Omaha, Nebraska

FABRICATOR

Omaha Steel Works Div., Omsteel Industries, Inc., Omaha, Nebraska

JURORS' COMMENTS

"This 'people' bridge is a beautiful and logical solution for a pedestrian crossing of a highway. It is handsome from many viewpoints; for the motorist who goes beneath it and for the pedestrian who passes over it. It adds a note of interest and gaiety to the crossing of a busy highway. The designer should be complimented for his attractive treatment of the slender piers and his careful attention to the geometry which resulted in smooth, uninterrupted curves."

PRIZE BRIDGE 1969
SPECIAL TYPE

QUEENS ZOO-AVIARY PEDESTRIAN BRIDGE

DESIGNER

Clarke and Rapuano, Inc., New York, New York

OWNER

Built by Triborough Bridge & Tunnel Authority for
New York City Department of Parks, New York, New York

GENERAL CONTRACTOR

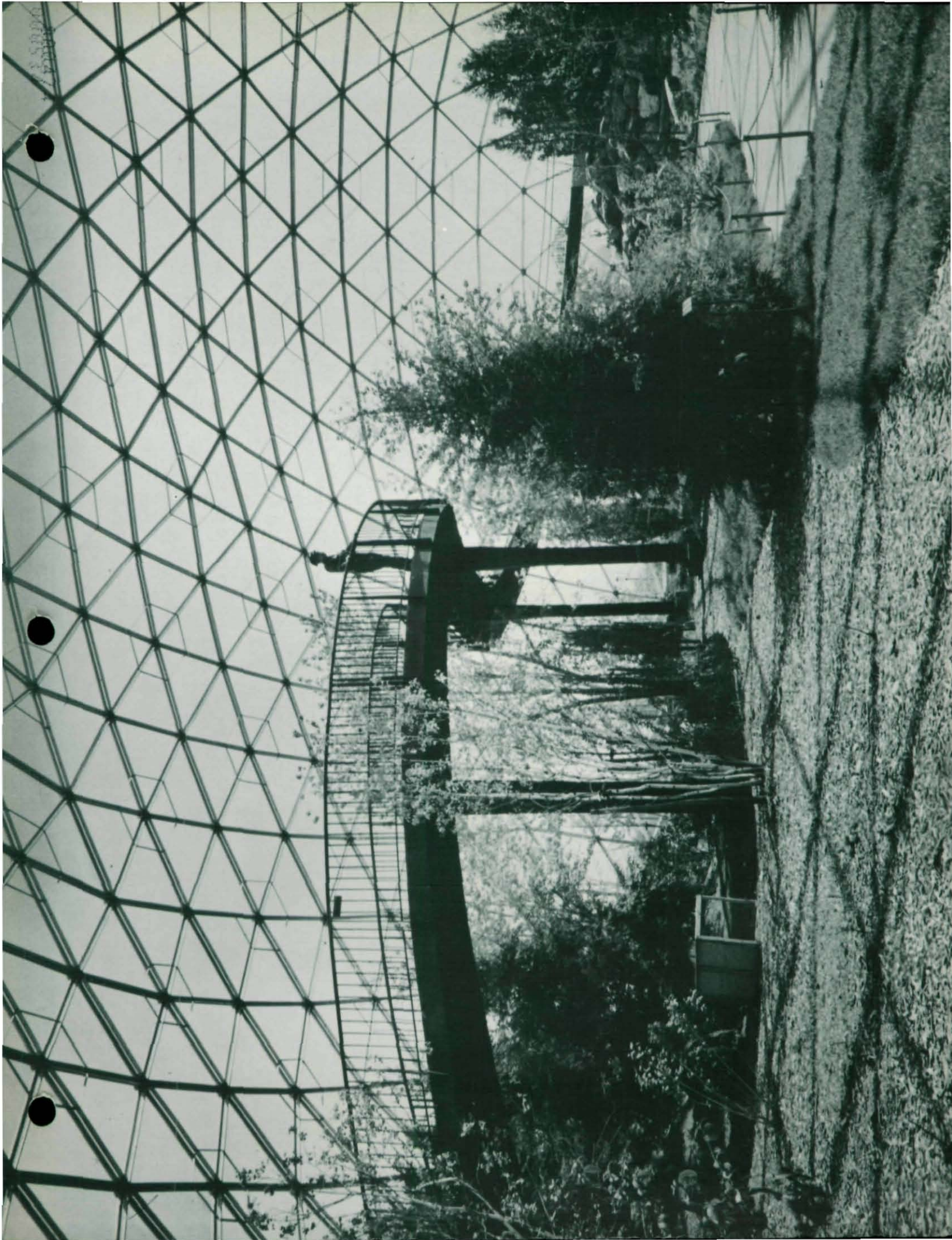
NAB Construction Corporation, Long Island City, New York

FABRICATOR

All-Steel Fabricators Co., Inc., Philadelphia, Pennsylvania

JURORS' COMMENTS

"This graceful pedestrian bridge inside a domed aviary makes its own artistic statement. It is an enjoyable design — light and airy. Constructed of colorful, weathering steel it achieves a 'playful' effect and is completely compatible with the dome around it. Its slender effect would be difficult in any material other than steel."





AWARD OF MERIT 1969

LONG SPAN

DELAWARE MEMORIAL BRIDGE (SECOND STRUCTURE) NEW CASTLE, DELAWARE TO PENNSVILLE, NEW JERSEY

DESIGNERS

Howard, Needles, Tammen & Bergendoff, New York, New York

and

E. Lionel Pavlo, DScCE, Consulting Engineer, New York, New York

OWNER

Delaware River and Bay Authority, New Castle, Delaware

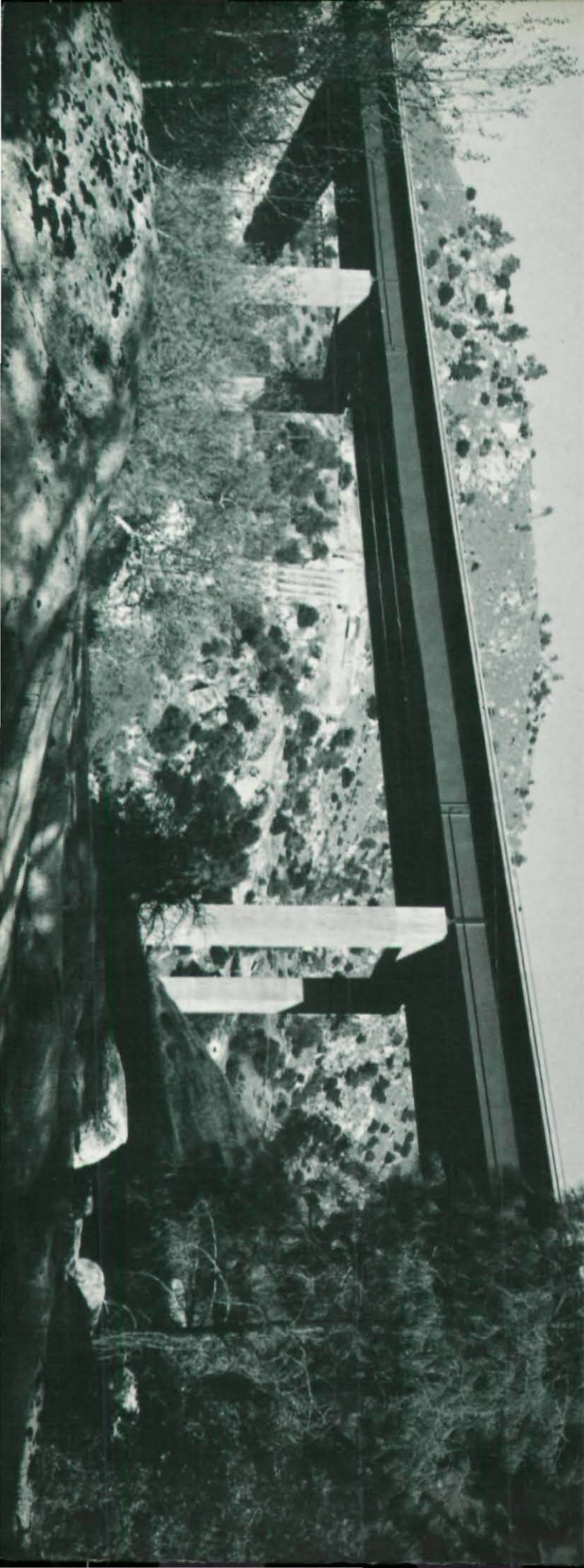
GENERAL CONTRACTORS

Superstructure: Schiavone Construction Company, Inc., Secaucus, New Jersey
Buckley & Co., Inc. and Schiavone Construction Company, Inc., Philadelphia, Pa.

Substructure: Steers-Perini-Pomeroy, New York, New York
Franklin Contracting Company, Little Falls, New Jersey
Ruckman and Hansen, Inc., Fort Wayne, Indiana

FABRICATORS

Bethlehem Steel Corporation, Bethlehem, Pennsylvania
Harris Structural Steel Co., New York, New York



MEDIUM SPAN, HIGH CLEARANCE

BRANDYWINE CREEK BRIDGE

WILMINGTON, DELAWARE

DESIGNER

Howard, Needles, Tammen & Bergendoff, New York, New York

OWNER

State of Delaware, Dover, Delaware

GENERAL CONTRACTOR

Superstructure: Burger Construction Corporation, Dover, Delaware

Substructure: Kaufman Construction Company, Inc., Philadelphia, Pennsylvania

FABRICATOR

American Bridge Division, United States Steel Corporation, Pittsburgh, Pennsylvania

A W A R D O F M E R I T 1 9 6 9

MEDIUM SPAN, HIGH CLEARANCE

KERN RIVER BRIDGE

NEAR ISABELLA, CALIFORNIA

DESIGNER

California Division of Highways, Bridge Department, Sacramento, California

OWNER

State of California, Sacramento, California

GENERAL CONTRACTOR

Oberg Construction Corp., Northridge, California

FABRICATOR

Pittsburgh-Des Moines Steel Company, Pittsburgh, Pennsylvania



SHORT SPAN

KEYSTONE SHORTWAY BRIDGE OVER BEAVER CREEK NEAR KNOX, PENNSYLVANIA

DESIGNER

Rummel, Klepper & Kahl, Camp Hill, Pennsylvania

OWNER

Commonwealth of Pennsylvania, Harrisburg, Pennsylvania

GENERAL CONTRACTOR

Frank Mashuda Company, Inc., Evans City, Pennsylvania

FABRICATOR

American Bridge Division, United States Steel Corporation, Pittsburgh, Pennsylvania

AWARD OF MERIT 1969

SHORT SPAN

SCOTT RIVER BRIDGE SISKIYOU COUNTY, CALIFORNIA

DESIGNER

Clair A. Hill & Associates, Consulting Engineers, Redding, California

OWNER

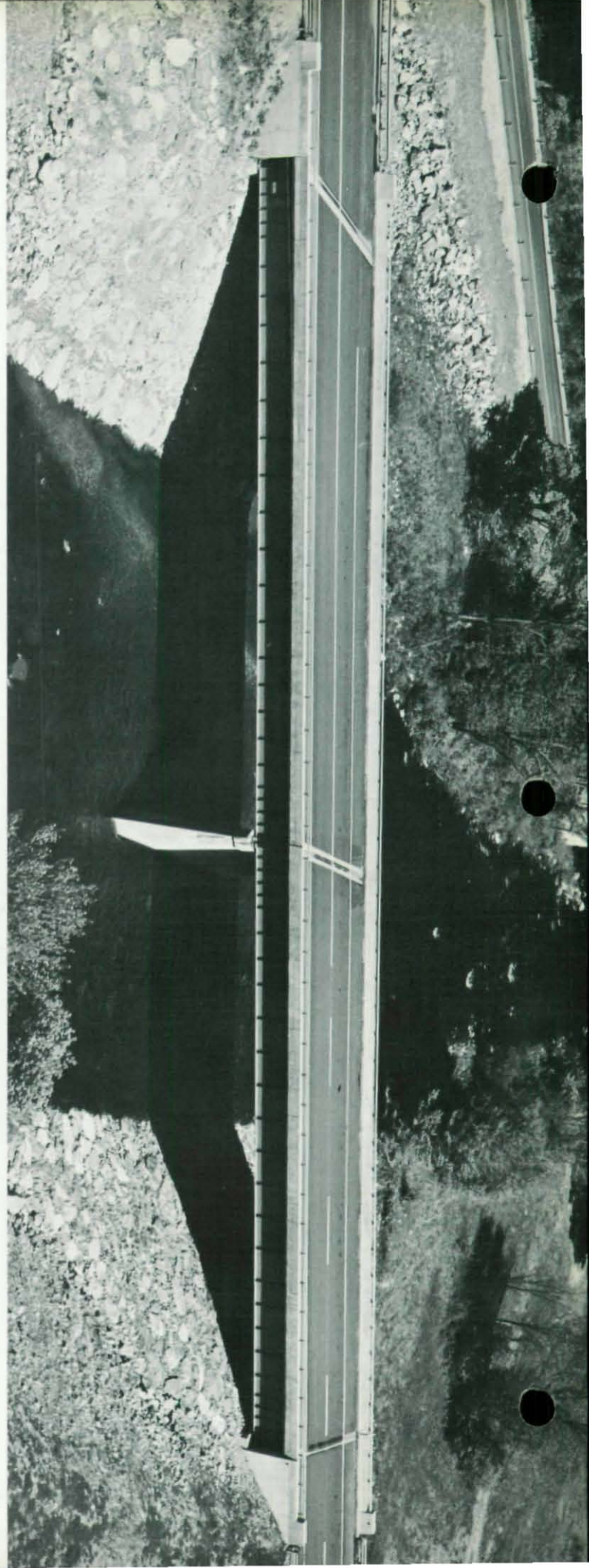
County of Siskiyou, Yreka, California

GENERAL CONTRACTOR

Continental Construction Co., Inc., Ashland, Oregon

FABRICATOR

San Jose Steel Company, Inc., San Jose, California



SHORT SPAN

SANDISFIELD BRIDGE NO. S-3-33

U. S. ROUTE 8 OVER FARMINGTON RIVER, MASSACHUSETTS

DESIGNER

Massachusetts Department of Public Works, Bridge Section, Boston, Massachusetts

OWNER

Commonwealth of Massachusetts, Boston, Massachusetts

GENERAL CONTRACTOR

Petricca Construction Company, Pittsfield, Massachusetts

FABRICATOR

Tower Iron Works, Seekonk, Massachusetts

A W A R D O F M E R I T 1 9 6 9

SPECIAL TYPE

MILWAUKEE COUNTRY CLUB RIVER BRIDGE

RIVER HILLS, WISCONSIN

DESIGNER

Howard, Needles, Tammen & Bergendoff, Milwaukee, Wisconsin

OWNER

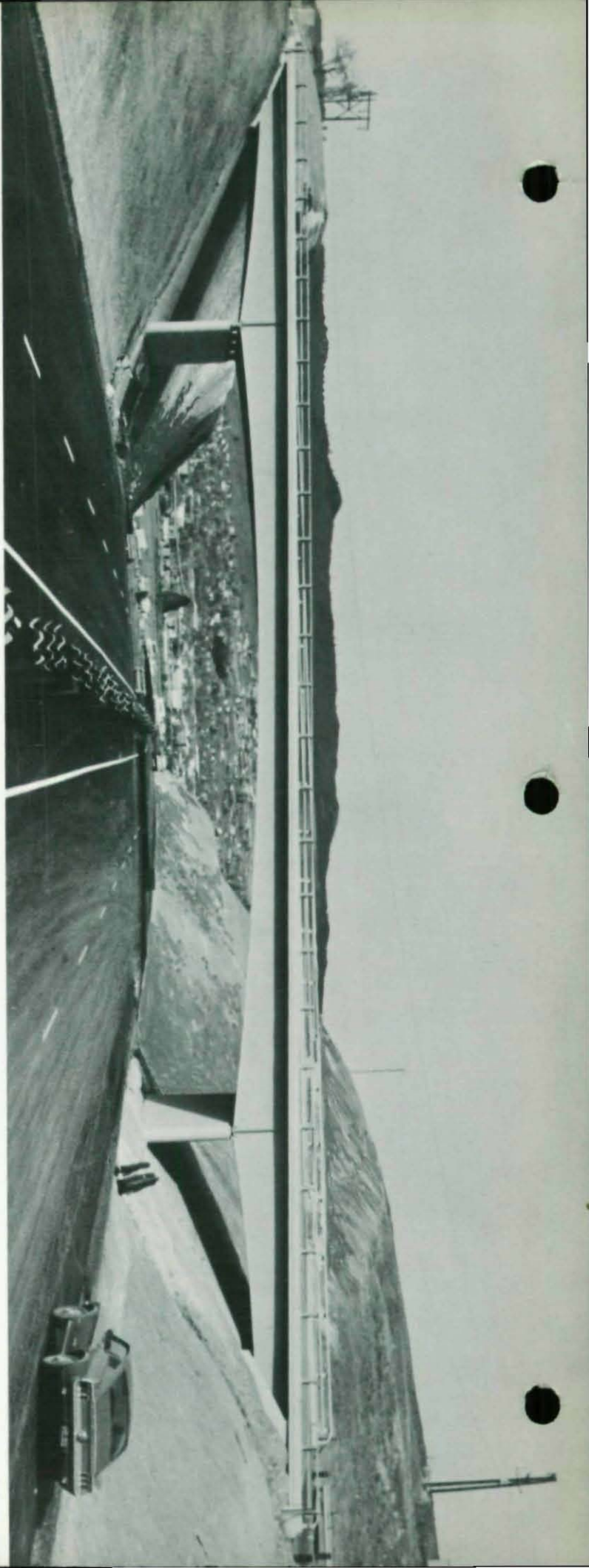
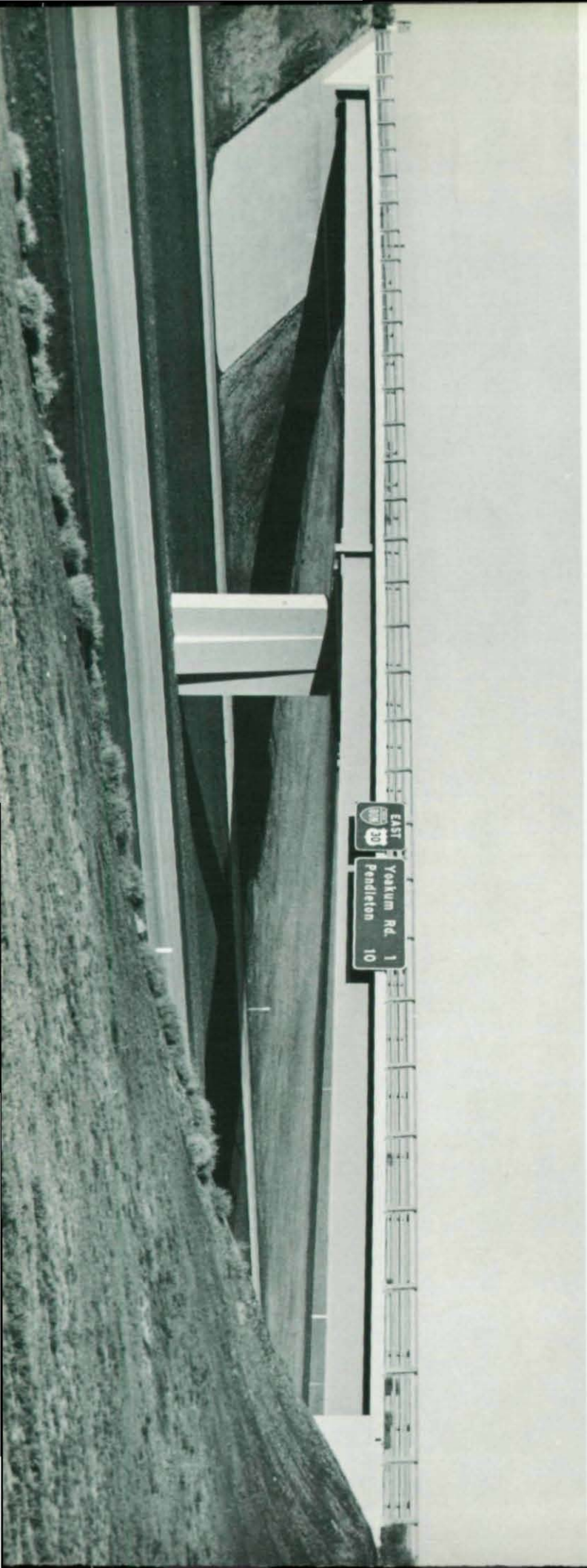
Milwaukee Country Club, Milwaukee, Wisconsin

GENERAL CONTRACTOR

Joseph D. Bonness, Inc., Milwaukee, Wisconsin

FABRICATOR

Lakeside Bridge and Steel Co., Milwaukee, Wisconsin



000479 61500
00519

HIGHWAY GRADE SEPARATION

RIVERSIDE DRIVE OVER THE DALLES-CALIFORNIA HIGHWAY
NEAR KLAMATH FALLS, OREGON

DESIGNER

Bridge Division, Oregon State Highway Department, Salem, Oregon

OWNER

State of Oregon, Salem, Oregon

GENERAL CONTRACTOR

State-Hall and Hamilton Construction Co., Portland, Oregon

FABRICATOR

San Jose Steel Company, Inc., San Jose, California

A W A R D O F M E R I T 1 9 6 9

HIGHWAY GRADE SEPARATION

REW INTERCHANGE

WEST OF PENDLETON, OREGON

DESIGNER

Bridge Division, Oregon State Highway Department, Salem, Oregon

OWNER

State of Oregon, Salem, Oregon

GENERAL CONTRACTOR

Rogers Construction, Inc., Portland, Oregon

FABRICATOR

Northwest Steel Fabricators, Inc., Vancouver, Washington



AMERICAN INSTITUTE OF STEEL CONSTRUCTION
101 Park Avenue, New York, N. Y. 10017