

Prize Bridges 1971

000498
000558



Prize Bridges of 1971

Steel bridges selected in the annual national competition conducted by the American Institute of Steel Construction as the most beautiful bridges opened to traffic in 1970.

AWARD CATEGORIES

LONG SPAN BRIDGES

Bridges having one or more spans of over 400 ft in length.

MEDIUM SPAN BRIDGES, HIGH CLEARANCE

Bridges with vertical clearance of 35 ft or more, costing over \$500,000, and having no single span (as measured by the supporting foundations) longer than 400 ft in length.

MEDIUM SPAN BRIDGES, LOW CLEARANCE

Bridges having vertical clearances of less than 35 ft, costing over \$500,000 and having no single span (as measured by the supporting foundations) longer than 400 ft in length.

SHORT SPAN BRIDGES

Bridges having fixed spans and costing less than \$500,000.

HIGHWAY GRADE SEPARATION BRIDGES

Bridges whose basic purpose is highway grade separation as contrasted to the above categories.

ELEVATED HIGHWAYS OR VIADUCTS

Bridges having more than five spans, which cross over one or more established traffic lanes, and which may afford access for pedestrian travel and for parking.

MOVABLE SPAN BRIDGES

Bridges having a movable span.

SPECIAL TYPE BRIDGES

Includes pedestrian overpass bridges, and other special purpose bridges not identifiable to one of the above categories.



The enduring beauty of steel bridges is eloquent tribute to the vision and skill of the men who plan, design and build them. The bridge designer of today is both artist and engineer. He understands the potential for strength and beauty which is inherent in steel structures, and he knows that aesthetic appearance can be achieved at no sacrifice of efficiency or economy. The simple grace of a highway overpass, no less than the majestic sweep of a river crossing, reflects a creative integration of structure, function and form, skillfully executed in beautiful bridges of steel.

To promote a more widespread appreciation of the aesthetics of steel bridges and to honor the architectural excellence of modern bridge design, the American Institute of Steel Construction sponsors an annual Prize Bridge Competition. Each year a distinguished Jury of Awards composed of leading educators, architects, and engineers, selects the steel bridges which it judges to be the most beautiful of those opened to traffic in the United States during the previous year.

To establish an equitable basis for competition, awards are made in each of several contest classifications. Size, cost and operating conditions determine the class in which each entry is eligible to compete. The prize winning bridges are marked with a stainless steel plaque, and the designers, owners and steel fabricators are awarded engraved certificates in recognition of their contribution and achievement.

The American Institute of Steel Construction sponsors this competition and awards the prizes in the belief that it is helping to render a public service by stimulating a lasting interest in improved bridge design.



Seated, l. to r.: Bray, Gilvin, Weese. Standing, l. to r.: Donnelly, Brandow.

JURY OF AWARDS

GEORGE E. BRANDOW, F.ASCE

Former President, American Institute of Consulting Engineers
Brandow & Johnston Associates
Los Angeles, California

OSCAR S. BRAY, F.ASCE

President, American Society of Civil Engineers
Bray, Backenstoss & Co., Inc., Ltd.
Lynnfield, Massachusetts

EDWARD J. DONNELLY, F.ASCE

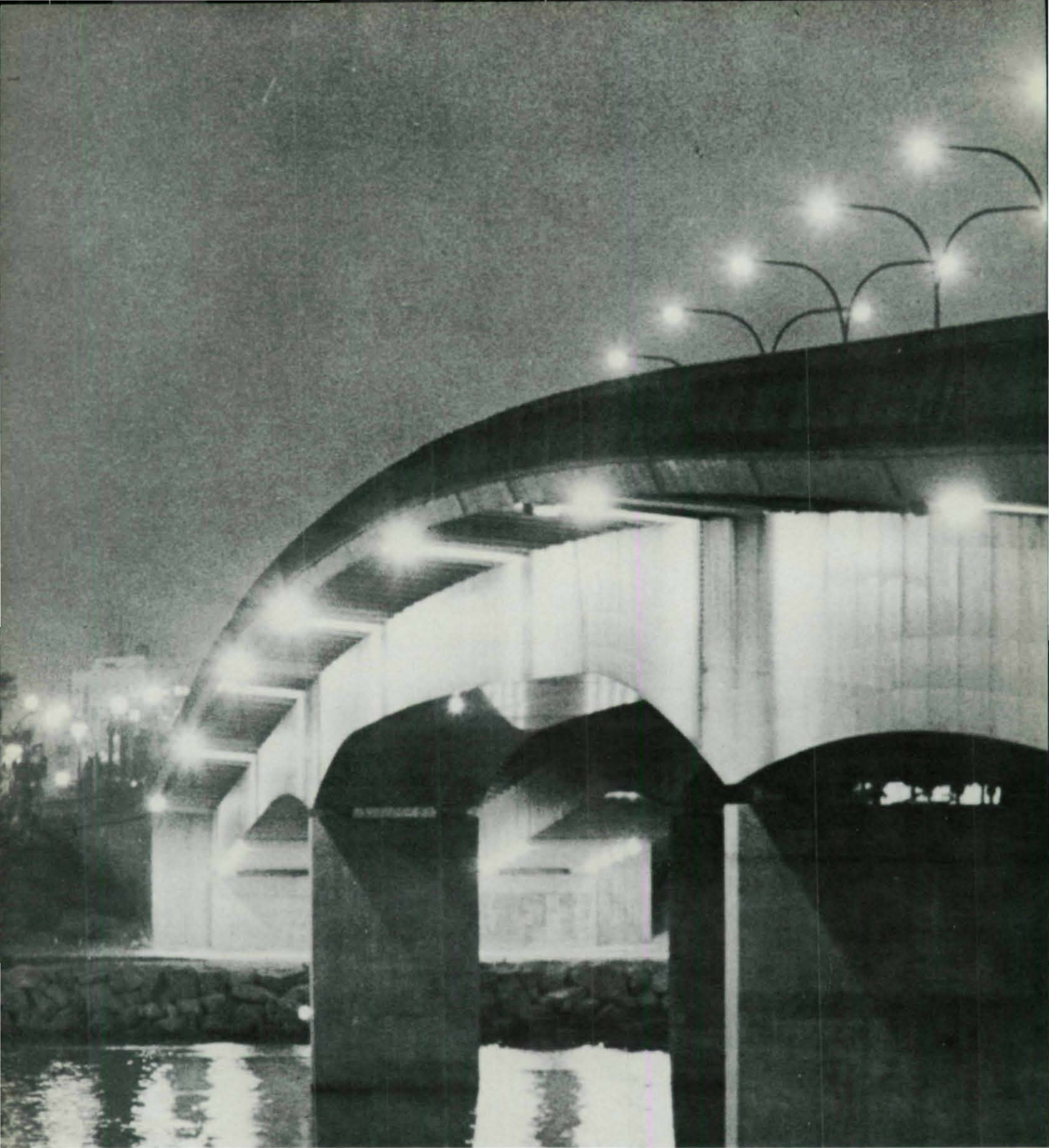
Chairman, J. E. Greiner Company, Inc.
Baltimore, Maryland

L. P. GILVIN

Past President, Associated General Contractors of America
Gilvin-Terrill, Inc.
Amarillo, Texas

HARRY WEESE, FAIA

Harry Weese & Associates
Chicago, Illinois



Queen's Way Bridge

PRIZE BRIDGE 1971 / LONG SPAN

Jurors' Comments: "Clean lines, a neat vertical alignment, and apparent simplicity are combined in this excellently proportioned structure. The guard rails, the lighting, and other considerations for safety have been handled well. This is a fine example of a beautifully designed box girder bridge."



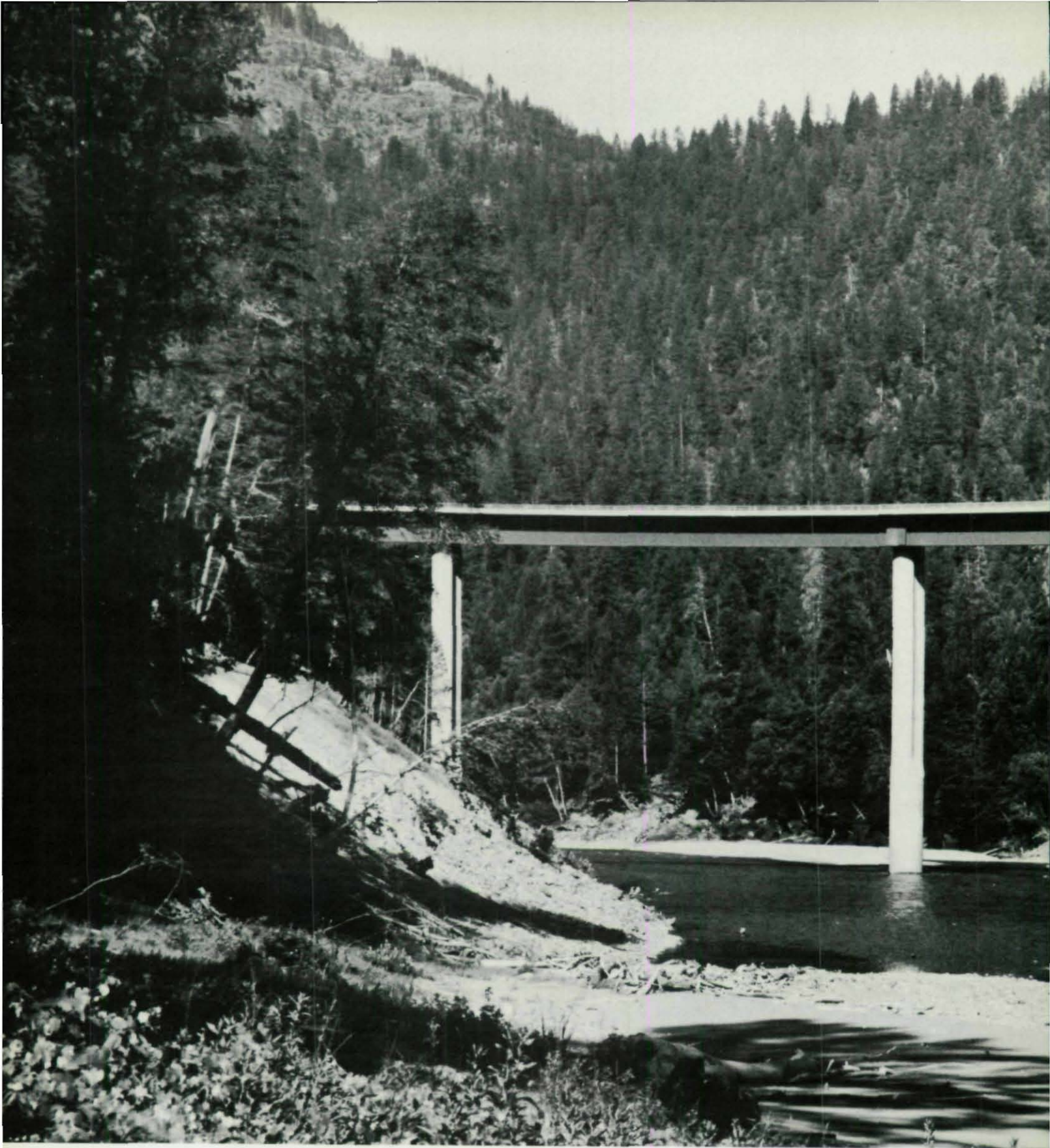
LONG BEACH, CALIFORNIA

DESIGNERS M. A. Nishkian & Co., Consulting Engineers and
John K. Minasian, Structural Engineer, Long Beach, California

OWNER City of Long Beach, Long Beach, California

GENERAL CONTRACTORS *Superstructure:* Murphy Pacific Corporation, Oakland, California
Substructure: Guy F. Atkinson Company, Long Beach, California

FABRICATOR Murphy Pacific Corporation, Oakland, California



Klamath River (South Rogers Creek) Bridge

PRIZE BRIDGE 1971 / MEDIUM SPAN, HIGH CLEARANCE

Jurors' Comments: "A most elegant and spectacular bridge that beautifully matches the terrain. The tall piers are finely proportioned and add contrast that emphasizes the horizontal sweep and simplicity of this very attractive structure."



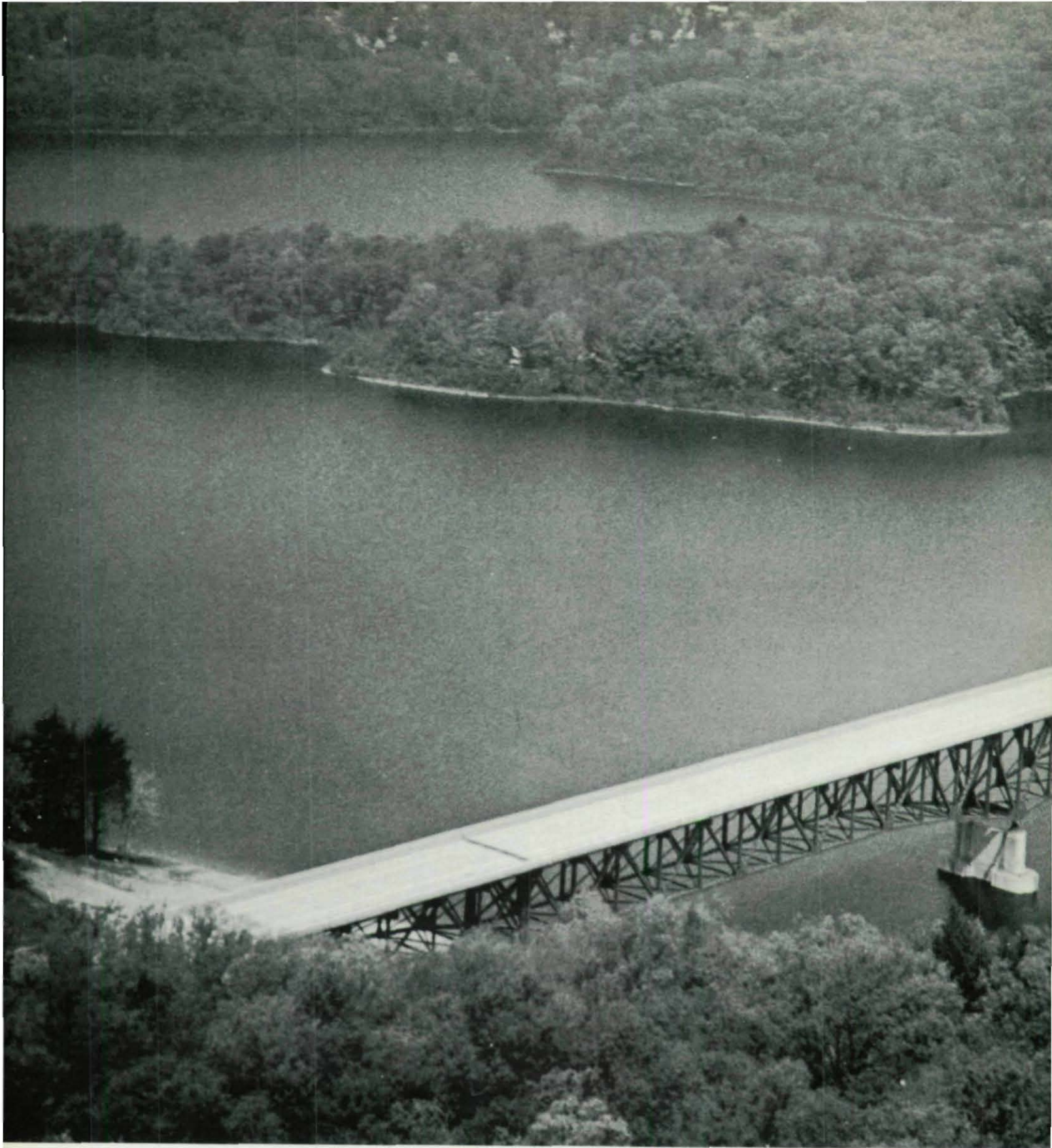
SISKIYOU COUNTY, CALIFORNIA

DESIGNER California Division of Highways, Sacramento, California

OWNER State of California, Sacramento, California

GENERAL CONTRACTOR The William Simpson Construction Company
Div. of Dillingham Corporation, Los Angeles, California

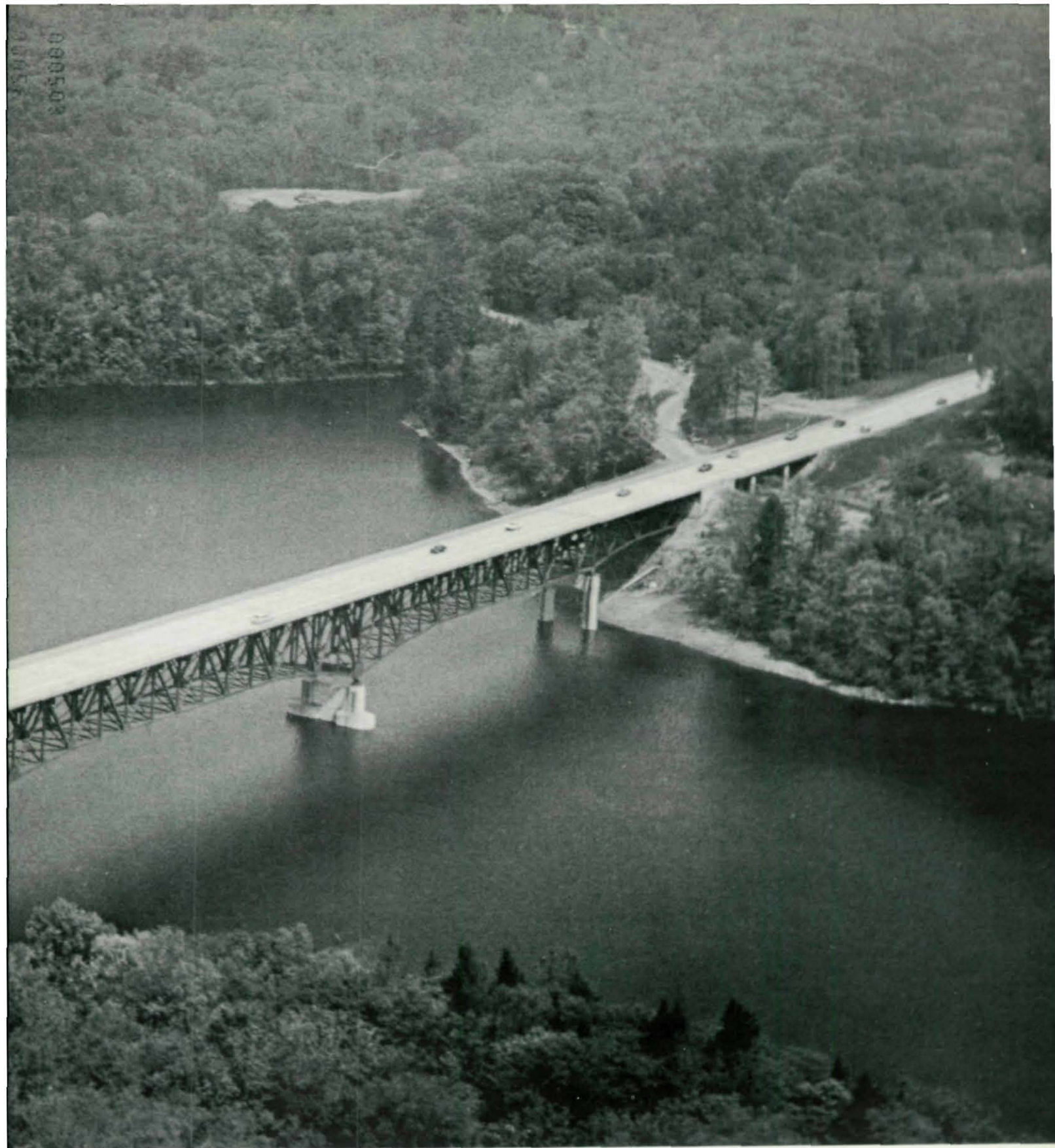
FABRICATOR American Bridge Division, U.S. Steel, Pittsburgh, Pennsylvania



New Croton Reservoir Bridge

PRIZE BRIDGE 1971 / MEDIUM SPAN, LOW CLEARANCE

Jurors' Comments: "A fine example of a bridge that matches and fits well into beautiful surroundings. It is a good application of a continuous truss bridge in which the trusses are carried right back into the landscape to be aesthetically pleasing. Very well done!"



WESTCHESTER COUNTY, NEW YORK

DESIGNER Blauvelt Engineering Co., New York, New York

OWNER East Hudson Parkway Authority, State of New York, Pleasantville, New York

GENERAL CONTRACTORS Mt. Vernon Contracting Corp. and
Colonial Asphalt Paving Corp., Mt. Vernon, N.Y.

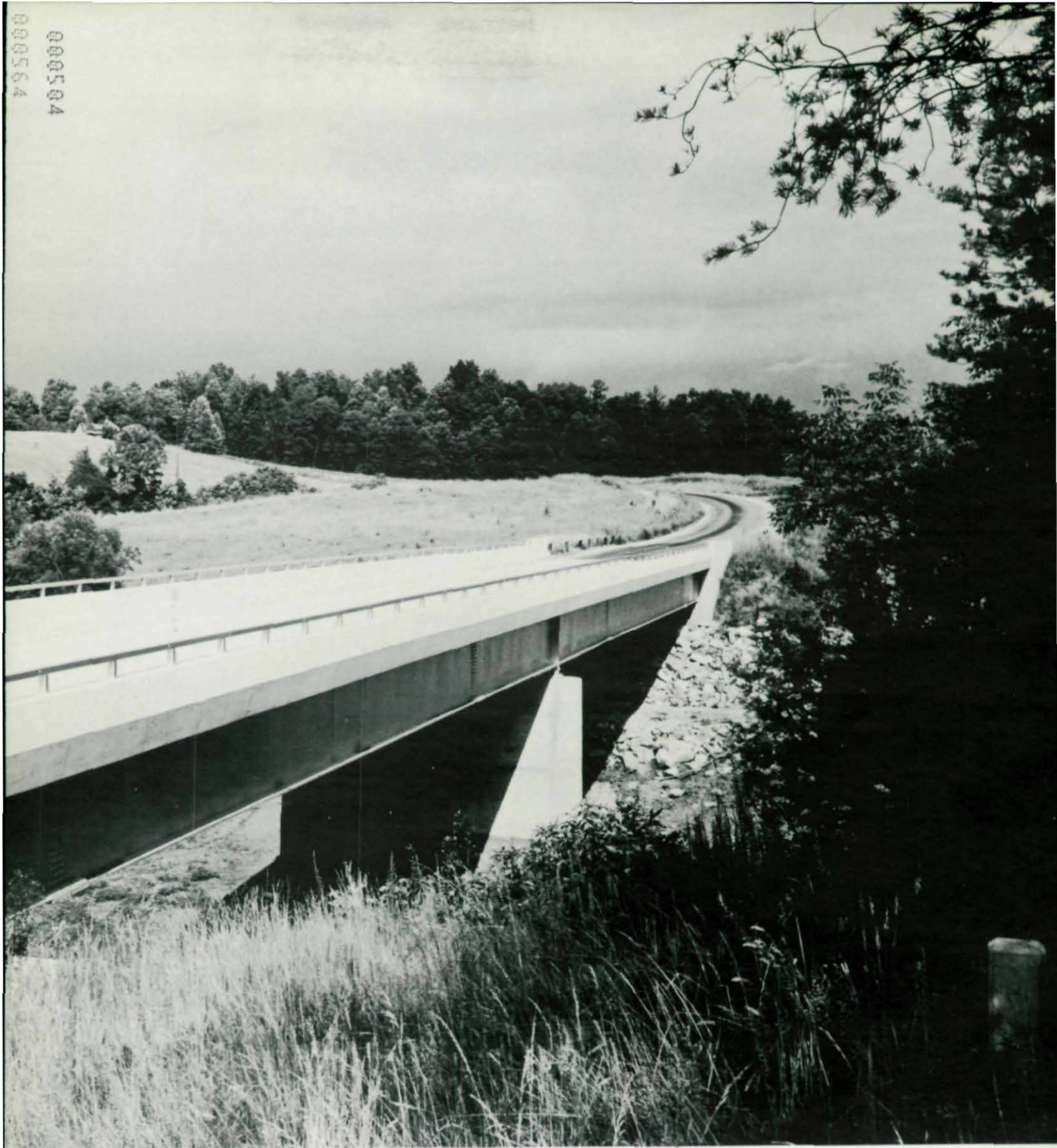
FABRICATOR Bethlehem Steel Corporation, Bethlehem, Pennsylvania



Blanks Mill Bridge across Rocky River

PRIZE BRIDGE 1971 / SHORT SPAN

Jurors' Comments: "This is 'simplicity' at its best. The bridge provides no interruption or disturbance to the highway over it. A clean, simple, and very nice solution!"



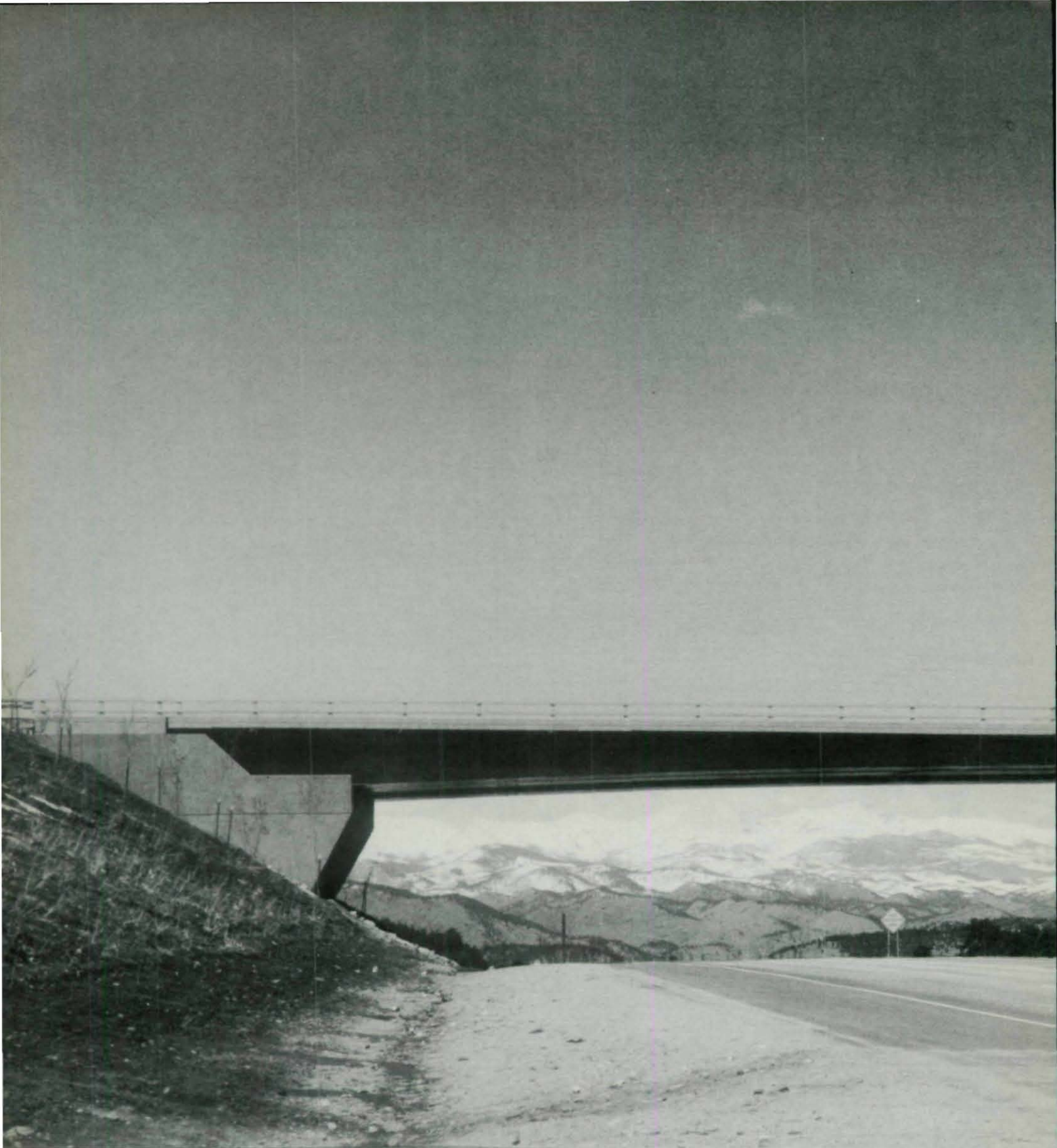
BETWEEN WARREN AND VAN BUREN COUNTIES, TENNESSEE

DESIGNER Tennessee Valley Authority, Knoxville, Tennessee

OWNER Van Buren County, Spencer, Tennessee and
Warren County, McMinnville, Tennessee

GENERAL CONTRACTOR Tennessee Valley Authority, Knoxville, Tennessee

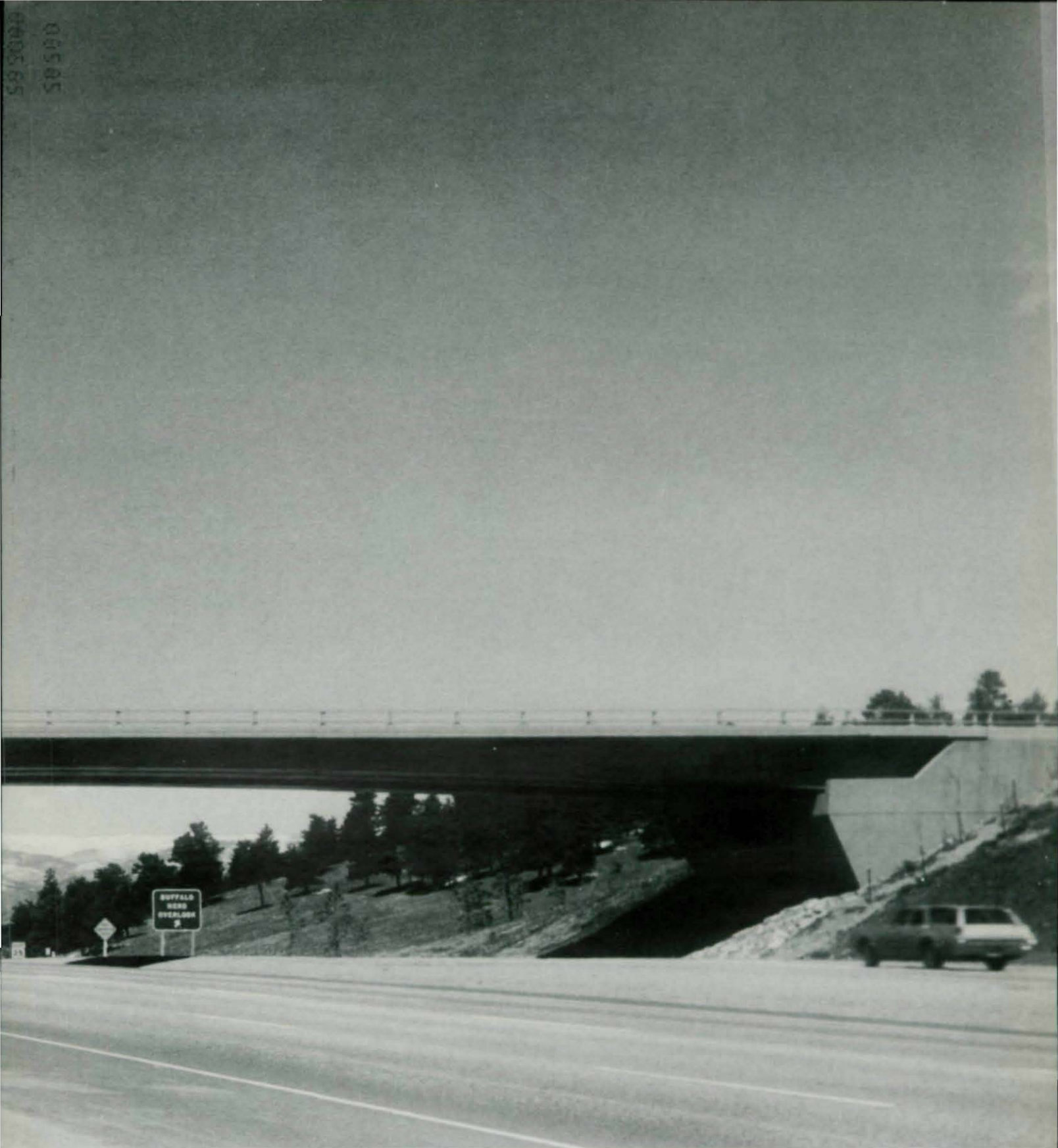
FABRICATOR Nashville Bridge Company, Nashville, Tennessee



Genesee Interchange

PRIZE BRIDGE 1971 / HIGHWAY GRADE SEPARATION

Jurors' Comments: "Here is a fine solution to a difficult highway crossing problem. The bridge is simple and straightforward. The omission of a center pier contributes to its graceful, slender lines, nicely frames the scene beyond, and provides the motorist with an unobstructed view."



I-70, JEFFERSON COUNTY, COLORADO

DESIGNER Colorado Division of Highways, Denver, Colorado

OWNER State of Colorado, Denver, Colorado

GENERAL CONTRACTOR H-E Lowdermilk Co., Englewood, Colorado

FABRICATOR Kansas City Structural Steel Co., Kansas City, Kansas





KANSAS CITY, MISSOURI

Bluff Freeway Bridges

PRIZE BRIDGE 1971/
ELEVATED HIGHWAYS OR VIADUCTS

Jurors' Comments: "This is a very simple and structurally honest bridge that blends well and seems to flow with the traffic pattern. The bottom chord bracing system is attractive as well as functional."

DESIGNER Howard, Needles, Tammen & Bergendoff
Kansas City, Missouri

OWNER Missouri State Highway Commission
Jefferson City, Missouri

GENERAL CONTRACTOR Ted Wilkerson, Inc., Kansas City, Kansas

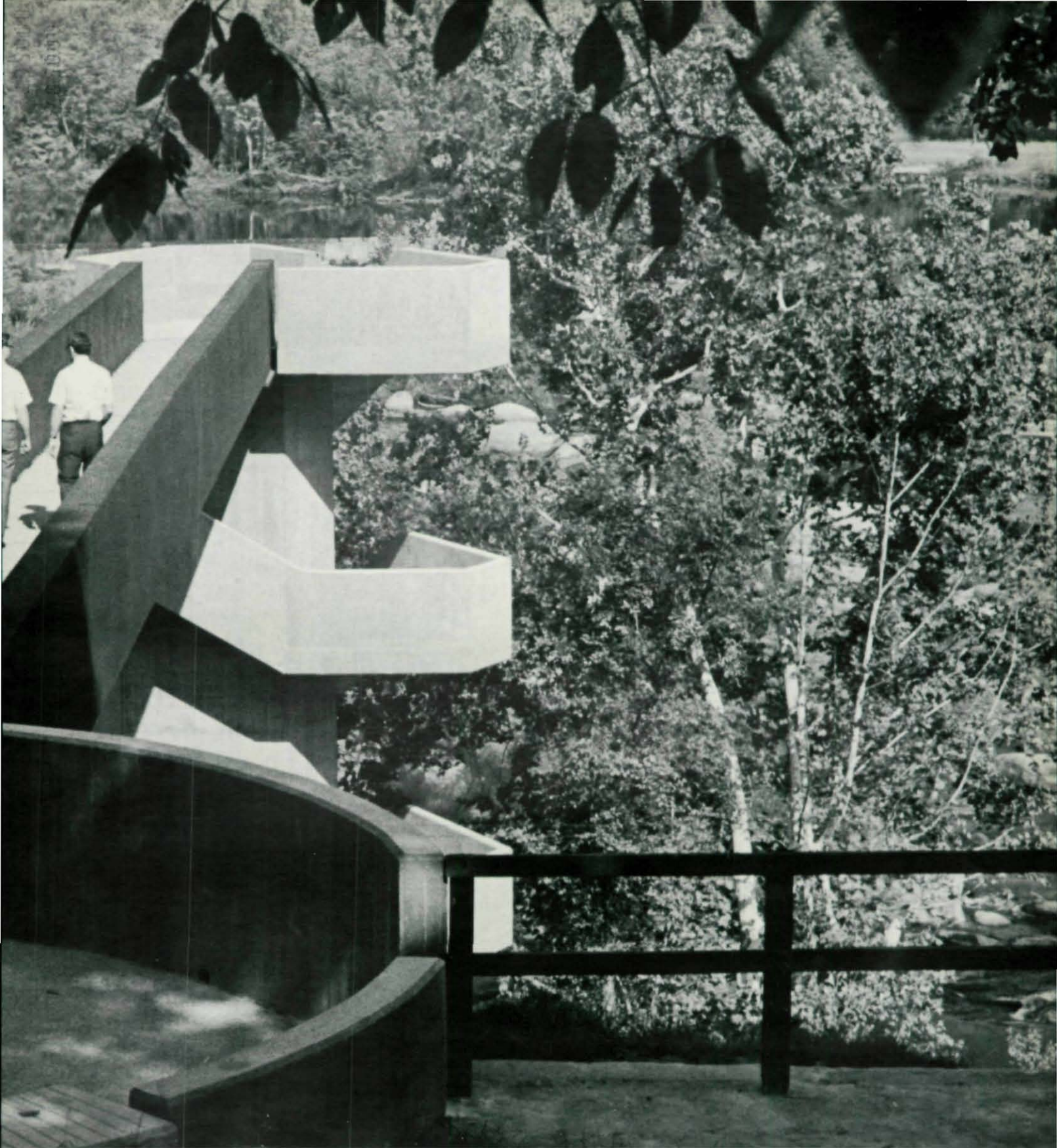
FABRICATOR American Bridge Division, U.S. Steel
Pittsburgh, Pennsylvania



Buttermilk Springs Bridge

PRIZE BRIDGE 1971 / SPECIAL TYPE

Jurors' Comments: "This bridge takes full advantage of the terrain and preserves its natural attractiveness. It is a strong and interesting sculpture, purely functional, yet beautiful."



RICHMOND, VIRGINIA

DESIGNERS Carlton Sturges Abbott, Williamsburg, Virginia and
Torrence, Dreelin, Farthing & Buford, Richmond, Virginia

OWNER City of Richmond, Richmond, Virginia

GENERAL CONTRACTOR J. A. Walder, Contractor, Richmond, Virginia

FABRICATOR Bristol Steel and Iron Works, Inc., Richmond, Virginia





PORT ARTHUR, TEXAS

Gulfgate Bridge

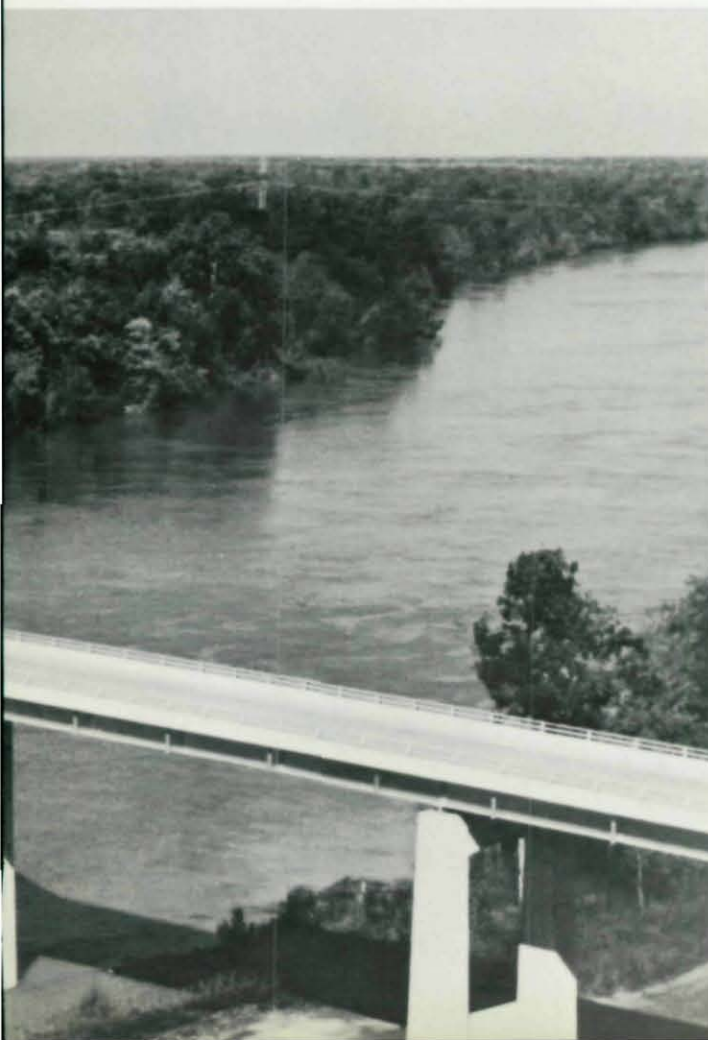
AWARD OF MERIT 1971/LONG SPAN

DESIGNER Modjeski and Masters, Harrisburg, Pennsylvania
for the U.S. Corps of Engineers
Galveston District

OWNER Jefferson County, Beaumont, Texas

GENERAL CONTRACTOR Coastal Construction Company, Houston, Texas

FABRICATOR Bethlehem Steel Corporation
Bethlehem, Pennsylvania



White River Bridge

AWARD OF MERIT 1971/LONG SPAN

DESIGNER Garver & Garver, Inc., Engineers
Little Rock, Arkansas

OWNER State of Arkansas, Little Rock, Arkansas

GENERAL CONTRACTORS *Superstructure:* American Bridge Division, U.S. Steel
Pittsburgh, Pennsylvania
Substructure: W. L. Sharpe Contracting Co., Inc.
Memphis, Tennessee

FABRICATOR American Bridge Division, U.S. Steel
Pittsburgh, Pennsylvania

DES ARC, ARKANSAS



Willamette River (West Linn) Bridge

AWARD OF MERIT 1971 / LONG SPAN



Chulitna River Bridge

AWARD OF MERIT 1971 / MEDIUM SPAN, HIGH CLEARANCE



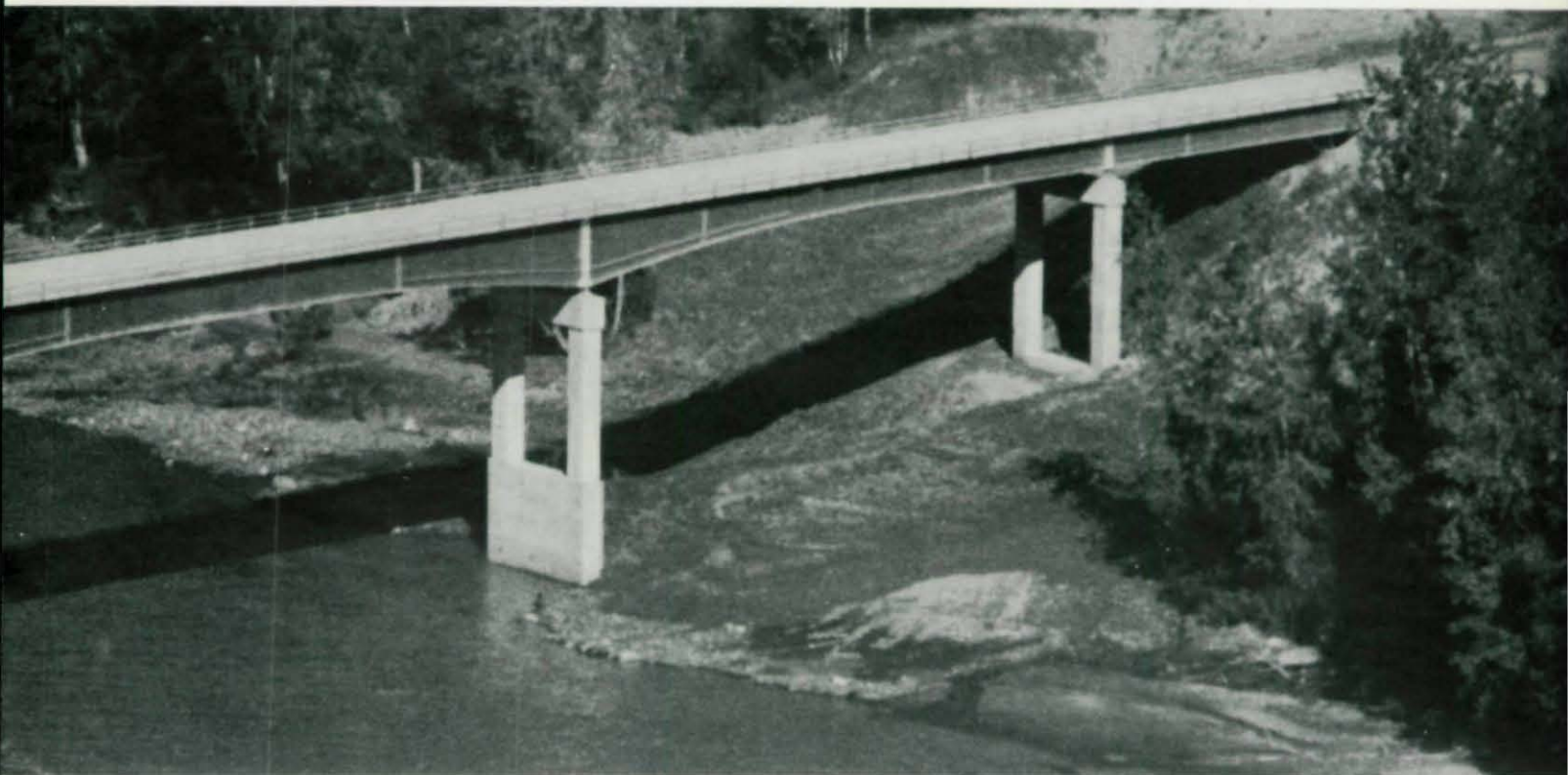
WEST LINN, OREGON

DESIGNER Moffatt, Nichol & Bonney, Inc., Portland, Oregon

OWNER State of Oregon, Salem, Oregon

GENERAL CONTRACTORS Willamette River Constructors, Portland, Oregon
(A Joint Venture of Willamette-Western Corp. and Donald M. Drake Company)

FABRICATOR Isaacson Structural Steel Company, Seattle, Washington

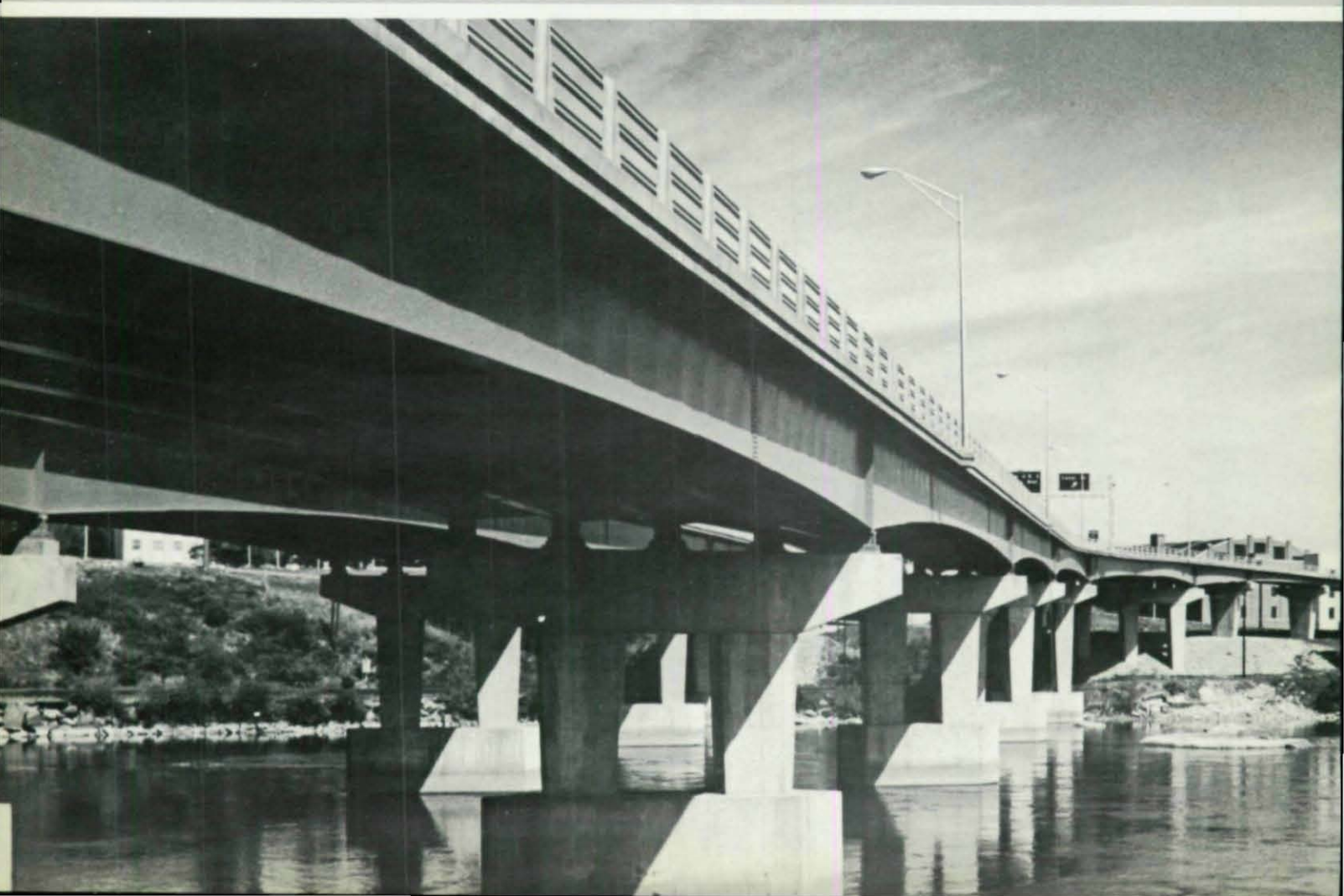
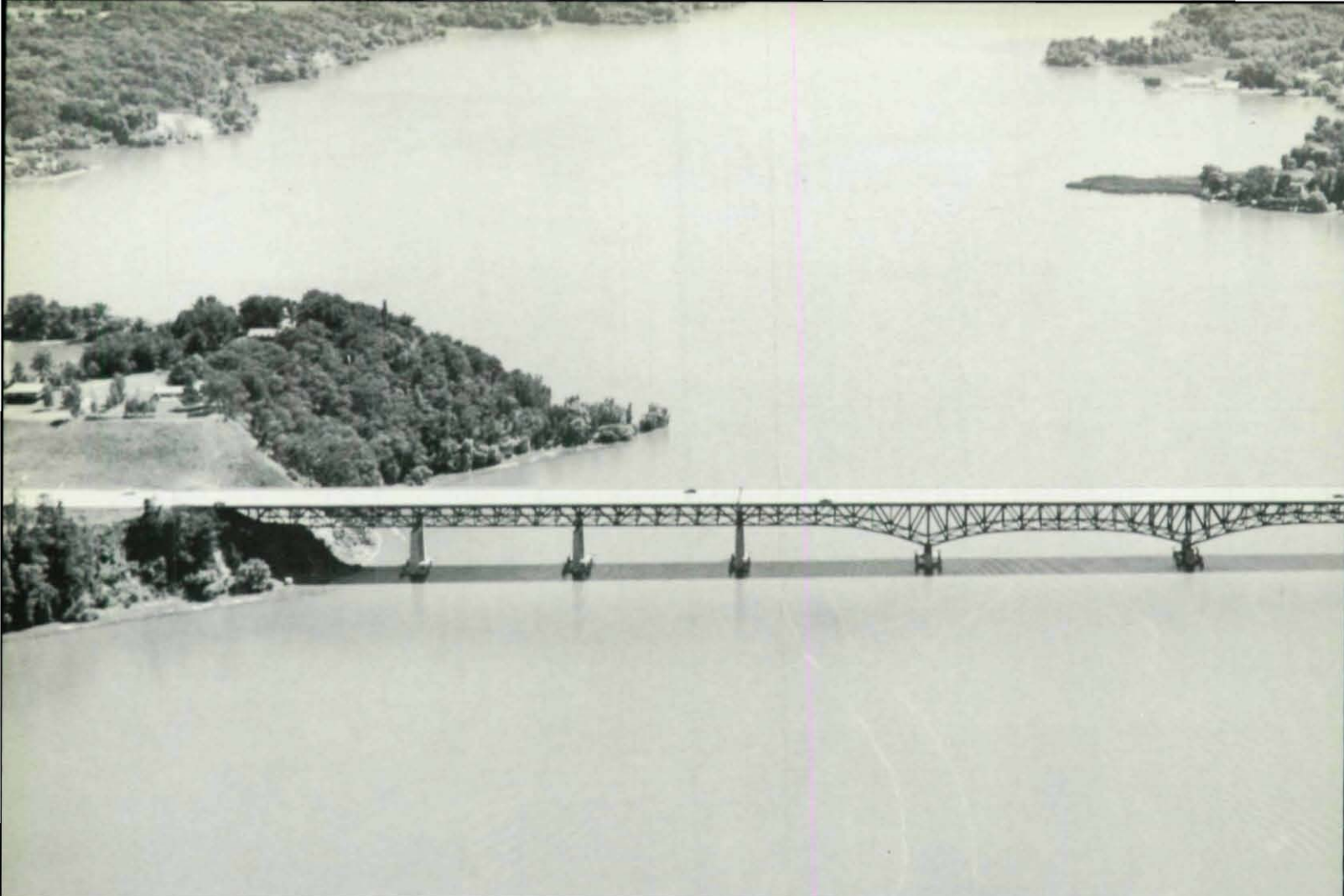


NORTH OF ANCHORAGE, ALASKA

DESIGNER Alaska Department of Highways, Juneau, Alaska

OWNER State of Alaska, Juneau, Alaska

GENERAL CONTRACTORS (A Joint Venture): A & G Construction Co., Anchorage, Alaska and
M-K Construction Co., Anchorage, Alaska





MONROE COUNTY, NEW YORK

Irondequoit Bay Bridge

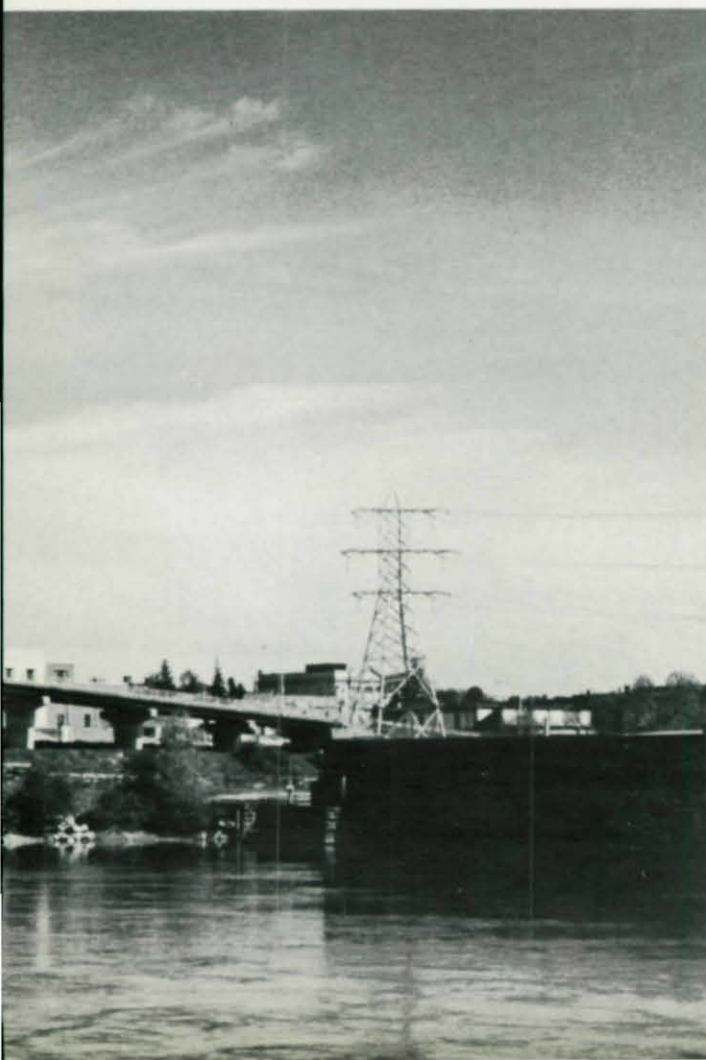
AWARD OF MERIT 1971/
MEDIUM SPAN, HIGH CLEARANCE

DESIGNER New York State Department of Transportation
Albany, New York

OWNER State of New York, Albany, New York

GENERAL CONTRACTORS *Superstructure:* American Bridge Division, U.S. Steel
Pittsburgh, Pennsylvania
Substructure: Brookfield & Baylor
New York, New York

FABRICATOR American Bridge Division, U.S. Steel
Pittsburgh, Pennsylvania



Amoskeag Memorial Bridge

AWARD OF MERIT 1971/
MEDIUM SPAN, LOW CLEARANCE

DESIGNER Fay, Spofford & Thorndike, Inc.
Boston, Massachusetts

OWNER City of Manchester, Manchester, New Hampshire

GENERAL CONTRACTORS *Superstructure:* Curran-Lavoie, Inc.
Littleton, New Hampshire
Substructure: Cianbro Corporation
Pittsfield, Maine

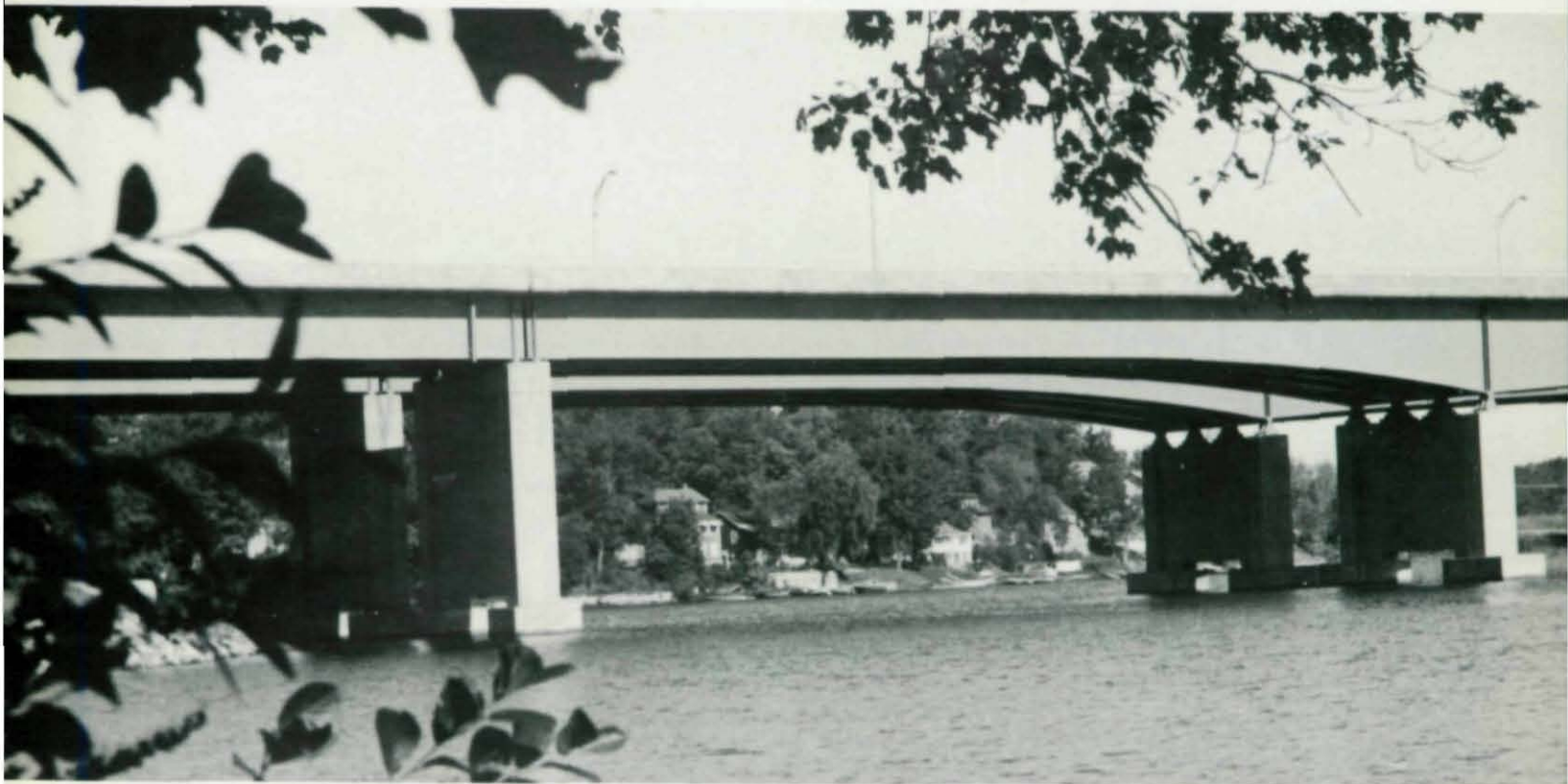
FABRICATOR Bancroft & Martin, Inc., South Portland, Maine

MANCHESTER, NEW HAMPSHIRE



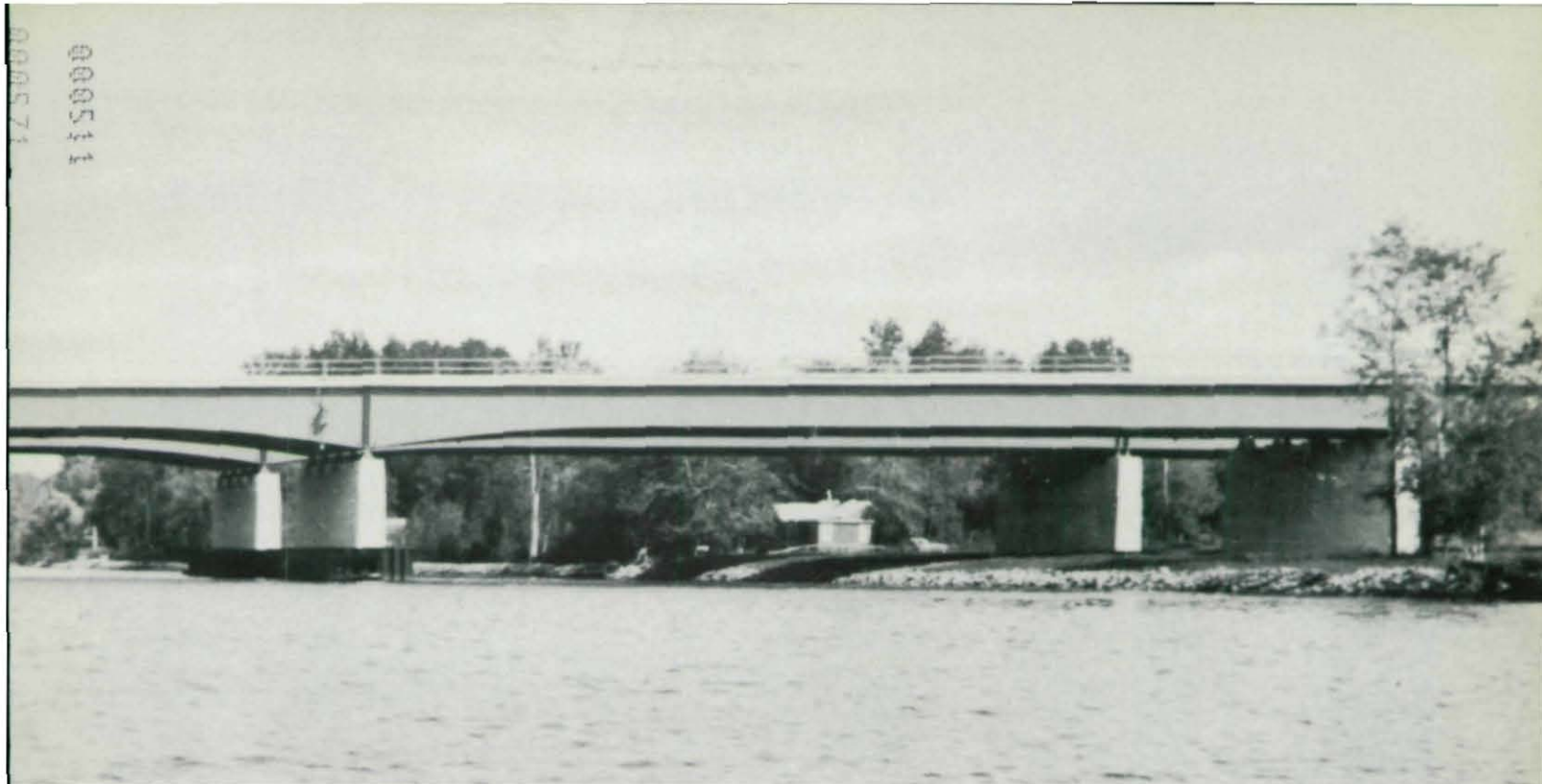
Oneida River & Bonstead Road Bridge

AWARD OF MERIT 1971 / MEDIUM SPAN, LOW CLEARANCE



Shrewsbury-Worcester Bridge

AWARD OF MERIT 1971 / MEDIUM SPAN, LOW CLEARANCE



ONONDAGA & OSWEGO COUNTIES, NEW YORK

DESIGNER King and Gavaris, New York, New York

OWNER State of New York, Albany, New York

GENERAL CONTRACTOR S. J. Groves & Sons Co., Inc., Liverpool, New York

FABRICATOR Ernst Steel Corporation, Buffalo, New York



I-290 OVER LAKE QUINSIGAMOND, MASSACHUSETTS

DESIGNER Singstad, Kehart, November & Hruka, New York, New York

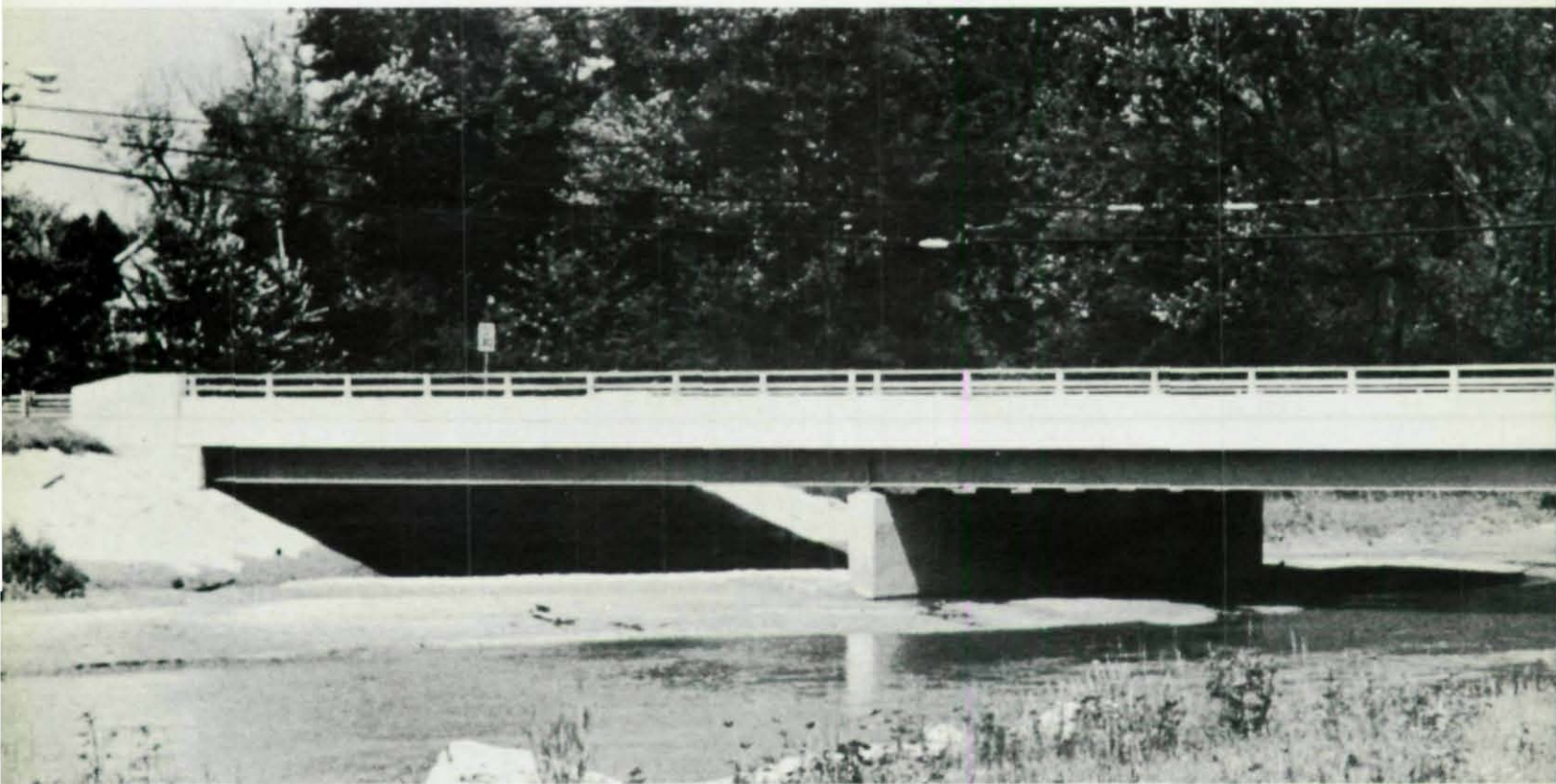
OWNER Commonwealth of Massachusetts, Boston, Massachusetts

GENERAL CONTRACTOR M. DeMatteo Construction Co., Quincy, Massachusetts



Cannonball River Bridge

AWARD OF MERIT 1971 / SHORT SPAN



U.S. Route 1 over Patuxent River

AWARD OF MERIT 1971 / SHORT SPAN



SOUTH OF NEW LEIPZIG, NORTH DAKOTA

DESIGNER North Dakota Highway Department, Bismarck, North Dakota

OWNER State of North Dakota, Bismarck, North Dakota

GENERAL CONTRACTOR James J. Igoe & Sons Construction, Inc., Bismarck, North Dakota

FABRICATOR Hassenstein Steel Company, Sioux Falls, South Dakota



LAUREL, MARYLAND

DESIGNER Maryland State Highway Administration, Baltimore, Maryland

OWNER State of Maryland, Baltimore, Maryland

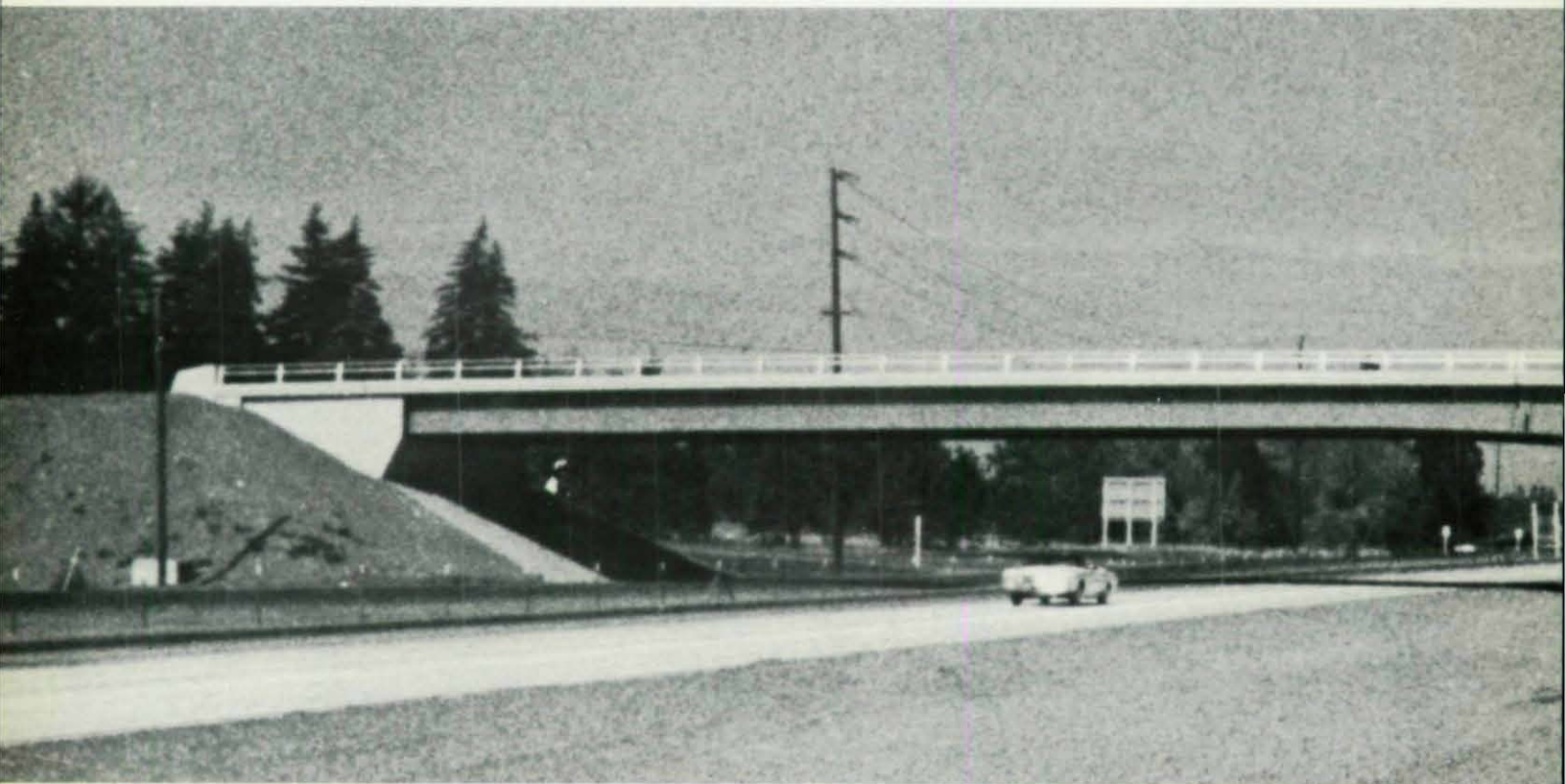
GENERAL CONTRACTOR John D. Sheetz Construction Company, Halethorpe, Maryland

FABRICATOR High Steel Structures, Lancaster, Pennsylvania



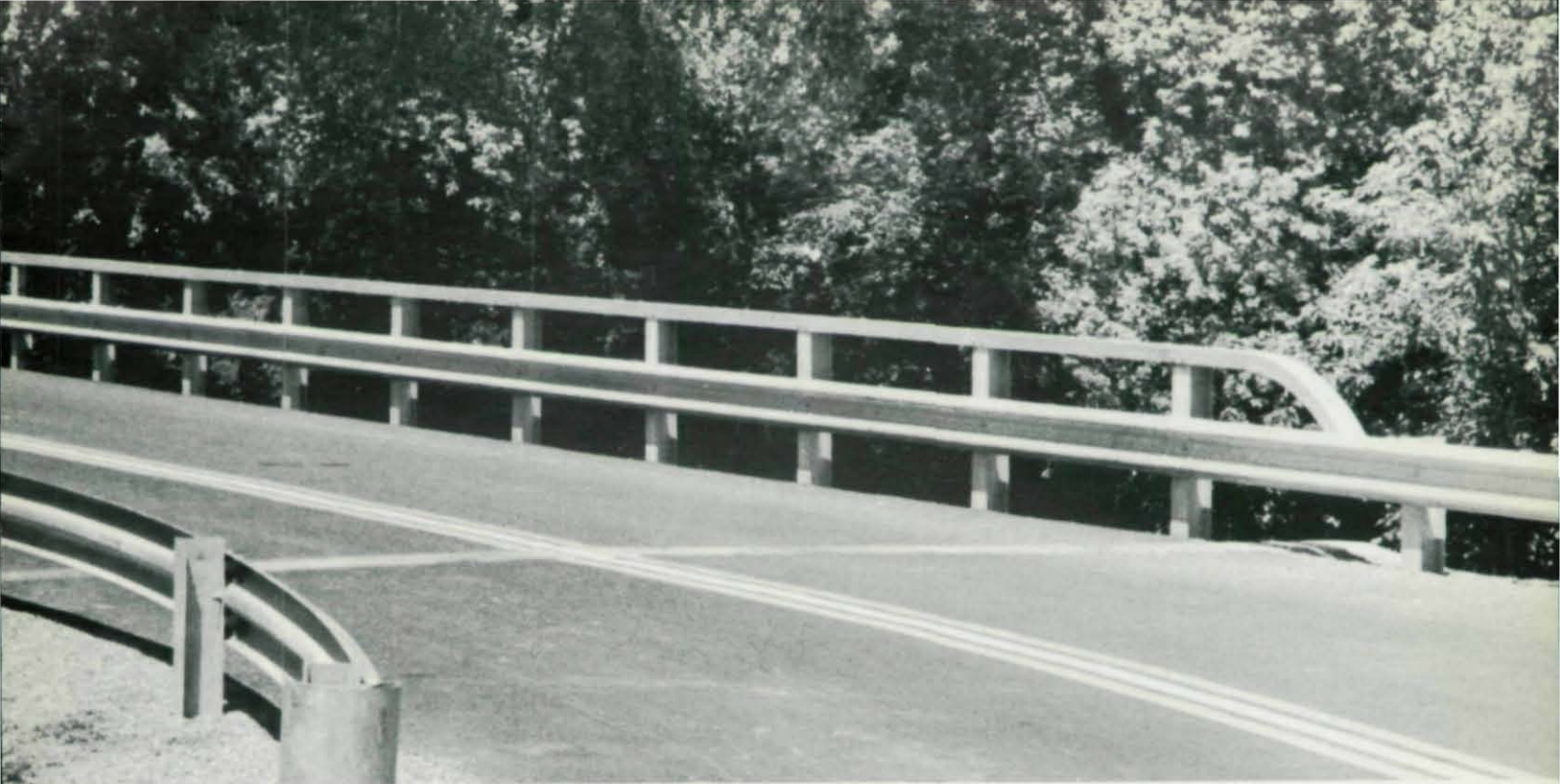
Walnut-Farber Street Bridge

AWARD OF MERIT 1971 / SHORT SPAN



I-5 Undercrossing of Boeckman Road

AWARD OF MERIT 1971 / HIGHWAY GRADE SEPARATION



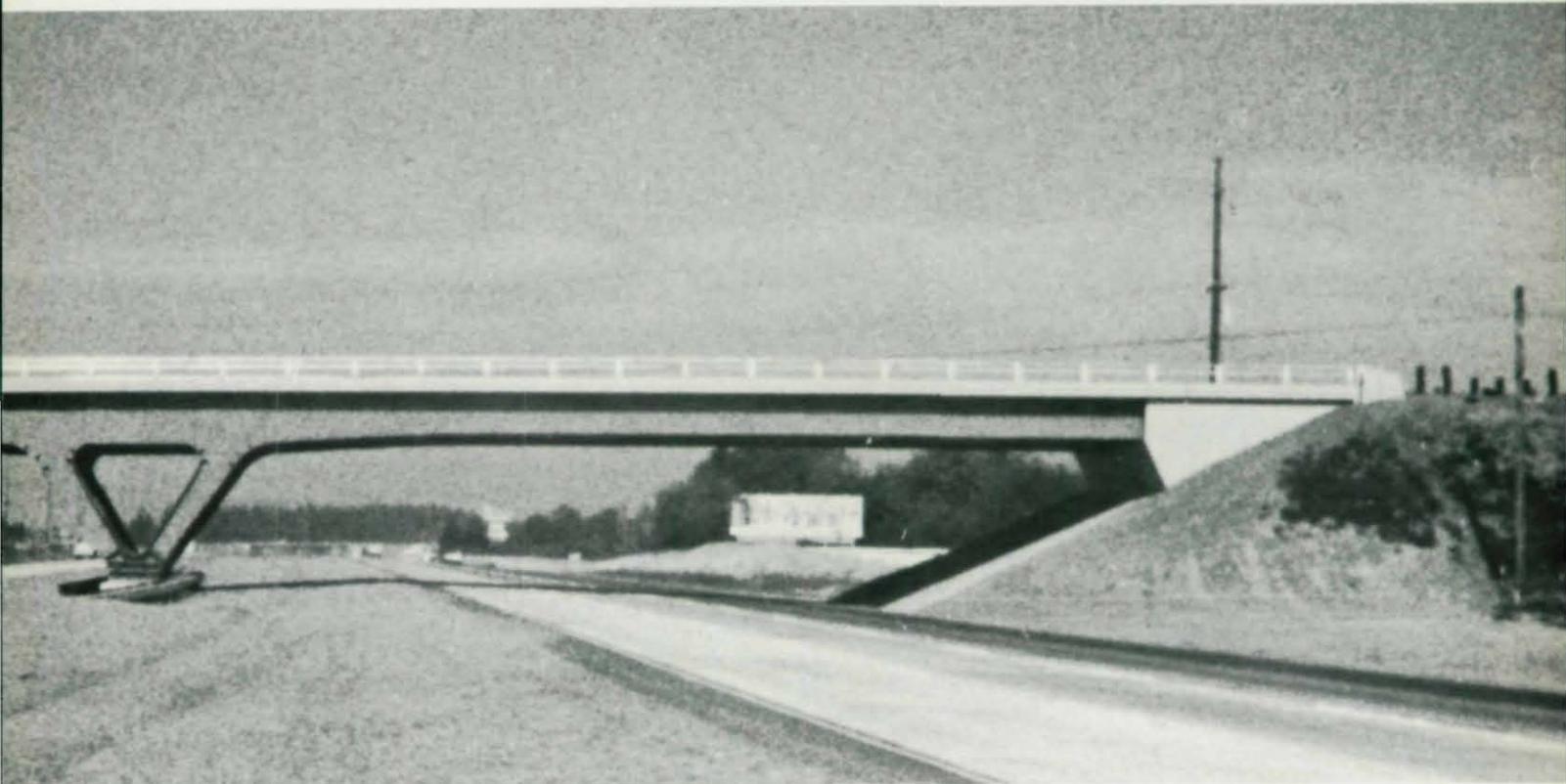
EAST SPARTA, OHIO

DESIGNER Stark County Engineer's Office, Canton, Ohio

OWNER Stark County, Canton, Ohio

GENERAL CONTRACTOR Escola Construction Company, Canton, Ohio

FABRICATOR Gregory Fabricating Corporation, Canton, Ohio



CLACKAMAS COUNTY, OREGON

DESIGNER Oregon Department of Transportation, Salem, Oregon

OWNER State of Oregon, Salem, Oregon

GENERAL CONTRACTOR Guy F. Atkinson Company, Long Beach, California

FABRICATOR Isaacson Structural Steel Company, Division of Isaacson Corporation, Seattle, Washington



OMAHA, NEBRASKA

Bridge 16-28th & Dodge Interchange

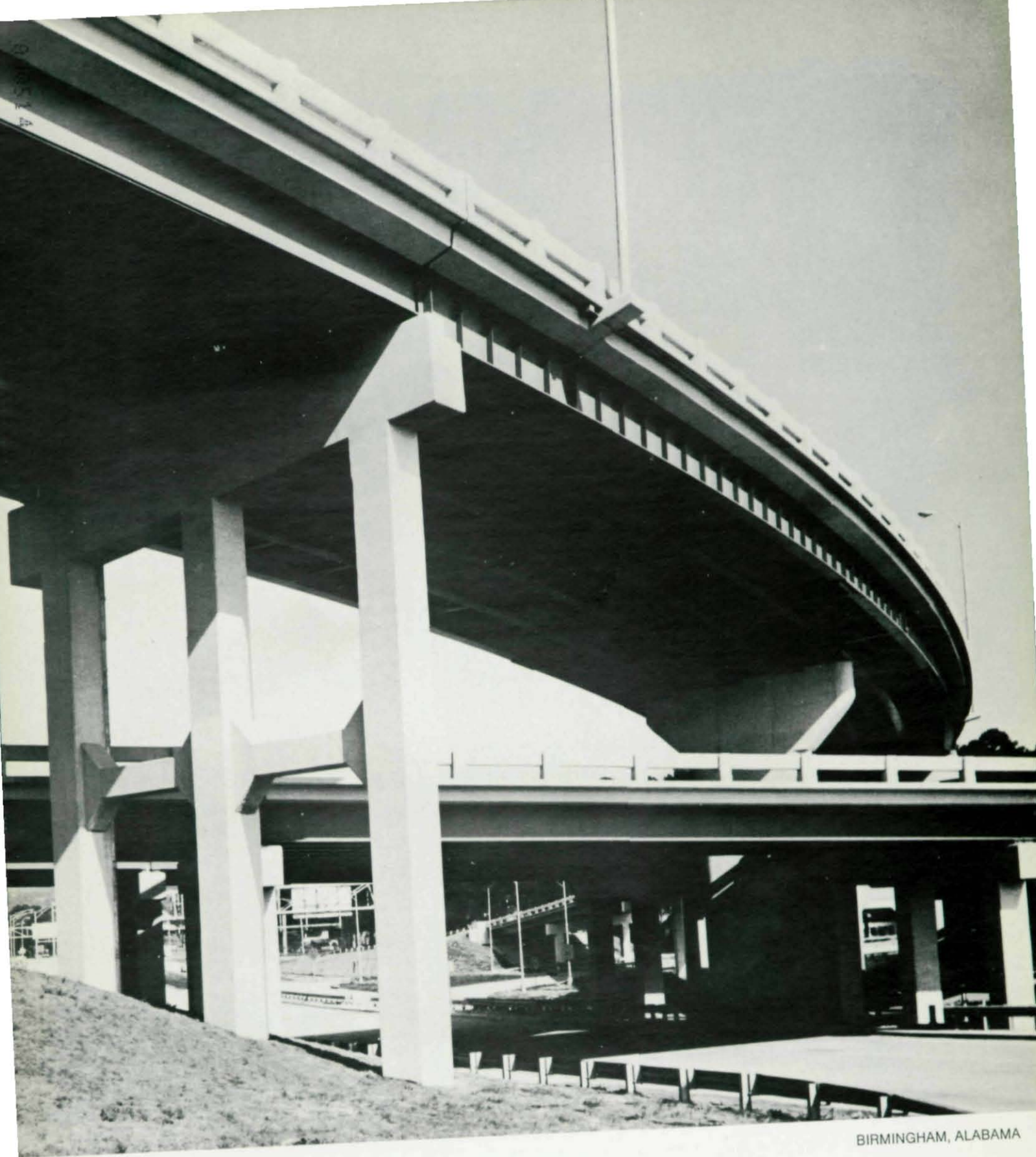
AWARD OF MERIT 1971/
HIGHWAY GRADE SEPARATION

DESIGNER Kirkham, Michael & Associates, Omaha, Nebraska

OWNER State of Nebraska

GENERAL CONTRACTOR Hobe Engineering Corporation, Sioux City, Iowa

FABRICATOR Gate City Steel Corporation, Omaha, Nebraska



BIRMINGHAM, ALABAMA

Homewood Interchange, Ramp A

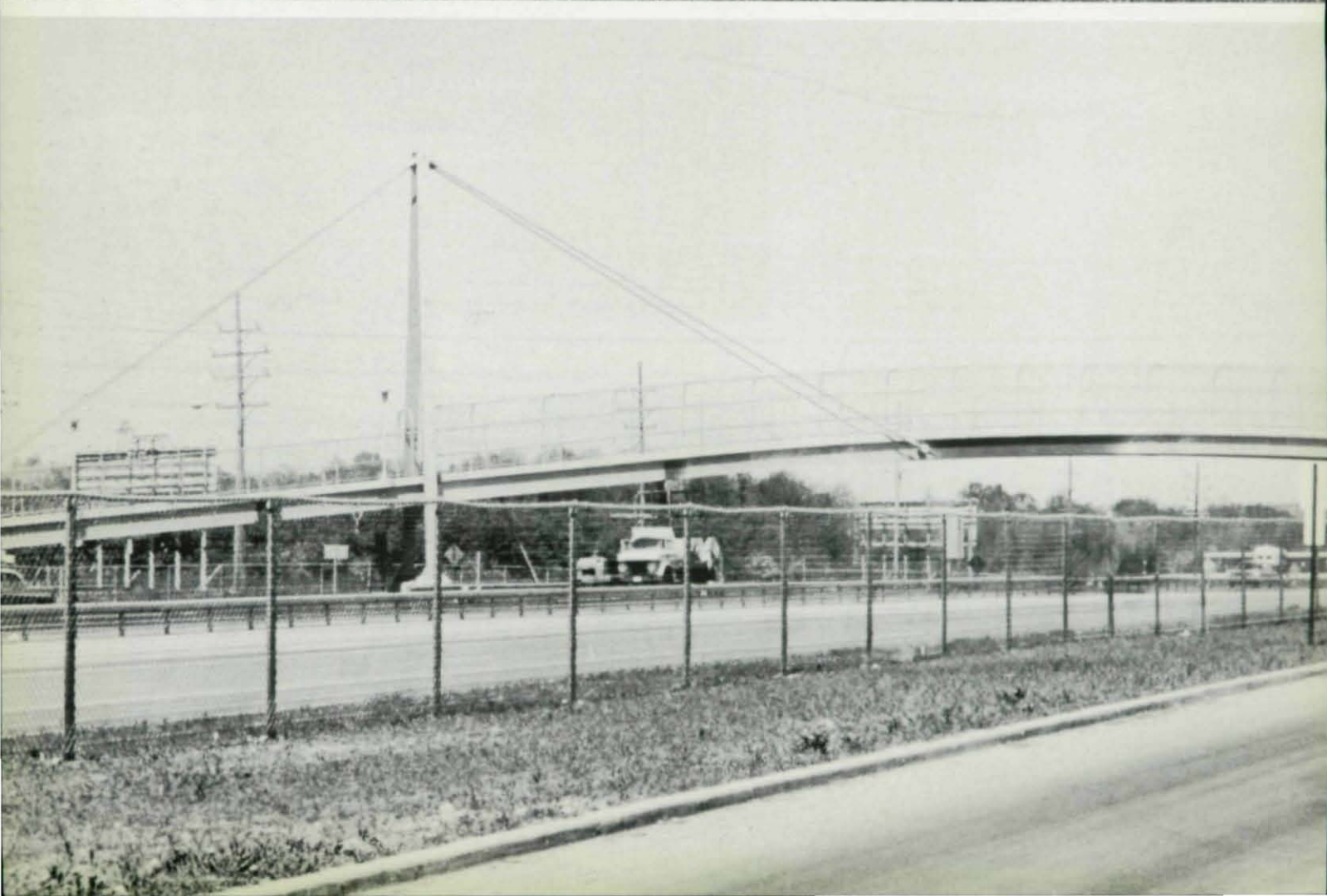
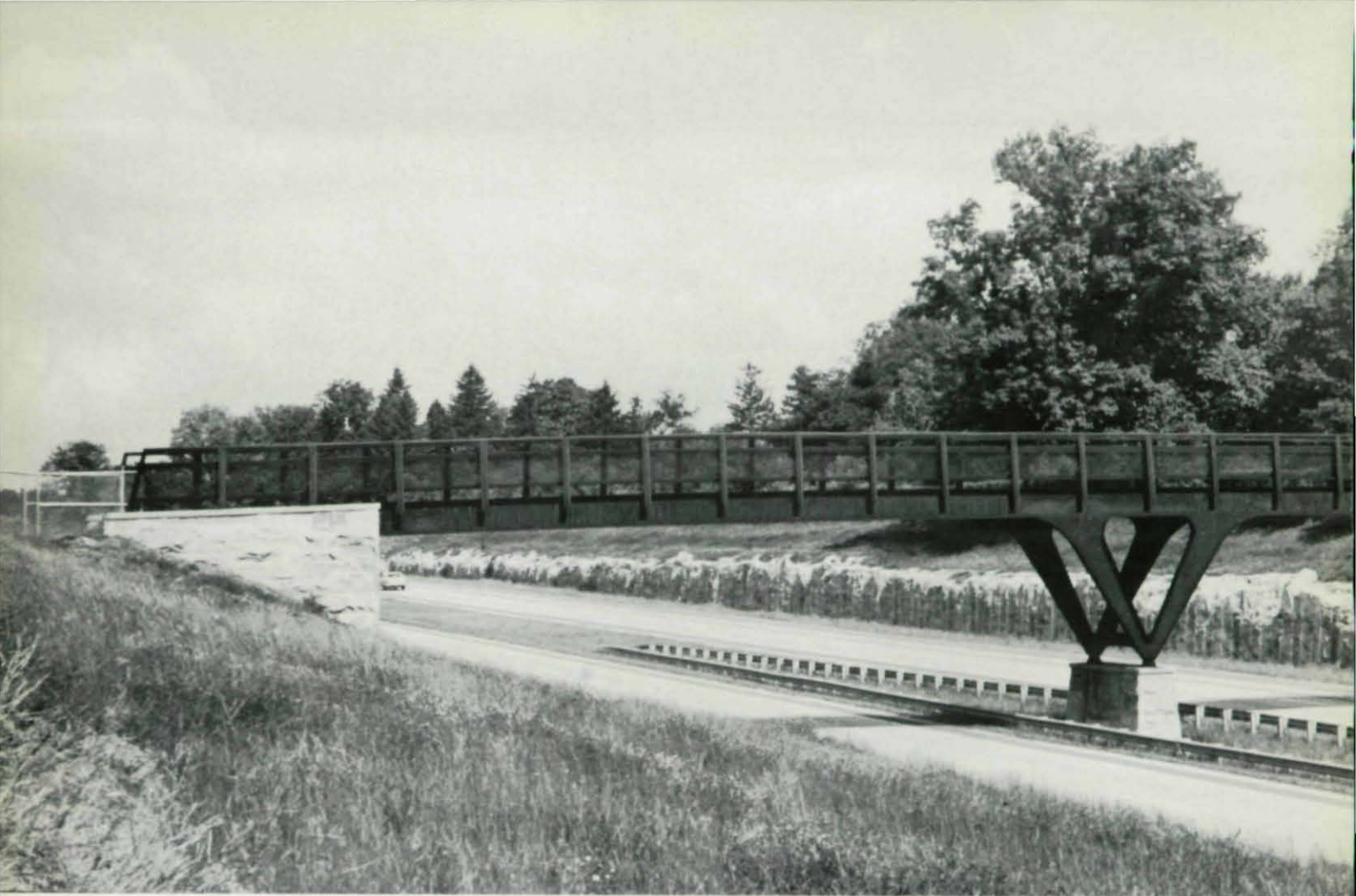
AWARD OF MERIT 1971/
ELEVATED HIGHWAYS OR VIADUCTS

DESIGNER State of Alabama Highway Department
Montgomery, Alabama

OWNER State of Alabama, Montgomery, Alabama

GENERAL CONTRACTORS Morris-Shea Bridge Co., Inc., Birmingham,
Alabama and Moss-Thornton Company, Inc.
Leeds, Alabama

FABRICATOR Gamble's, Inc., Montgomery, Alabama





LOUISVILLE, KENTUCKY

Bridle Path Bridge over I-64

AWARD OF MERIT 1971 / SPECIAL TYPE

DESIGNER Vollmer Associates, New York, New York

OWNER Commonwealth of Kentucky
Frankfort, Kentucky

GENERAL CONTRACTOR Greer Bros. & Young, Inc.
London, Kentucky

FABRICATOR Wise Iron Works, Inc.
Knoxville, Tennessee



Menomonee Falls Pedestrian Bridge

AWARD OF MERIT 1971 / SPECIAL TYPE

DESIGNER Wisconsin Division of Highways
Madison, Wisconsin

OWNER State of Wisconsin, Madison, Wisconsin

GENERAL CONTRACTOR Tubesign Construction Company
Brookfield, Wisconsin

FABRICATOR Phoenix Steel Corporation
Eau Claire, Wisconsin

MENOMONEE FALLS, WISCONSIN



AMERICAN INSTITUTE OF STEEL CONSTRUCTION
101 PARK AVENUE, NEW YORK, N.Y. 10017