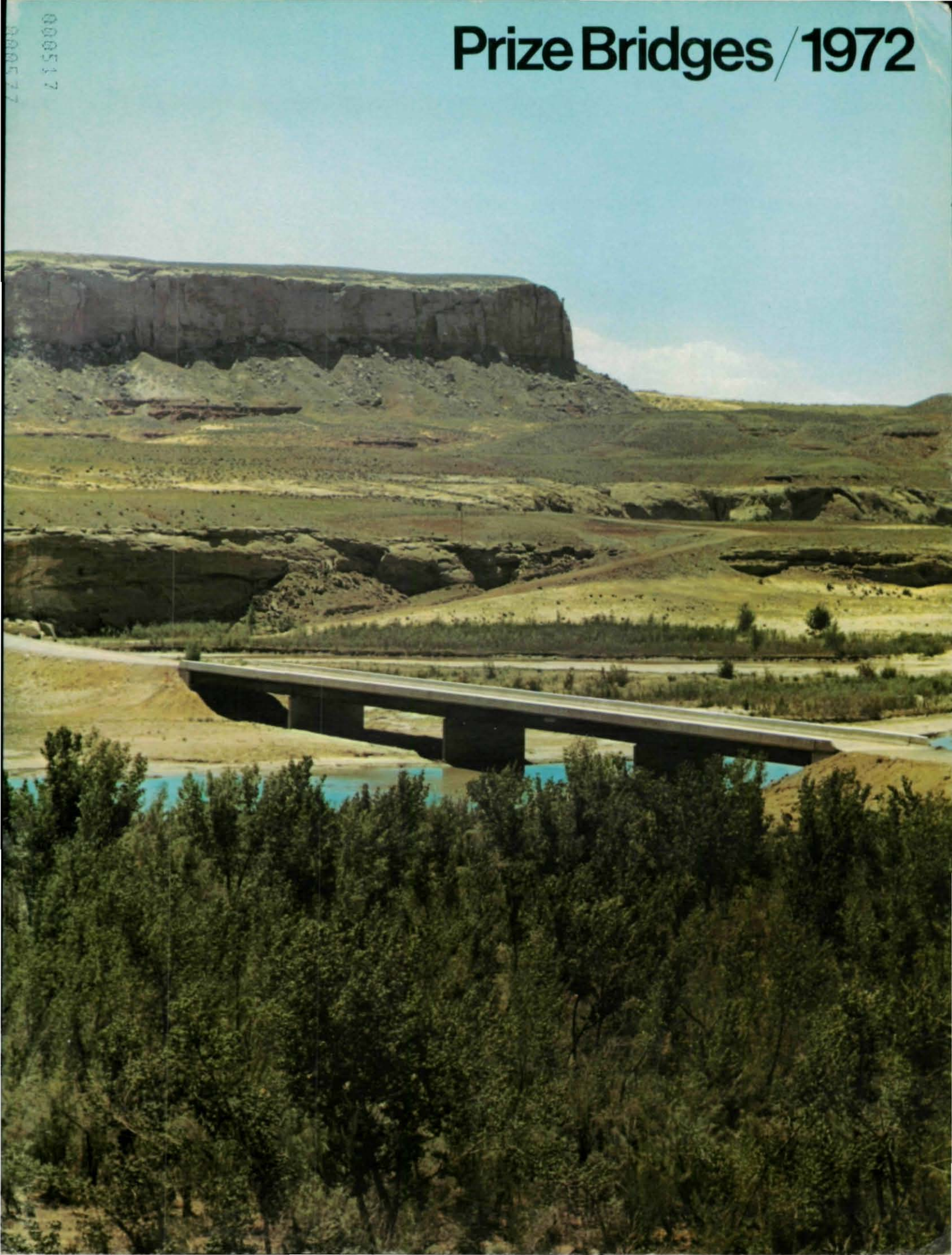
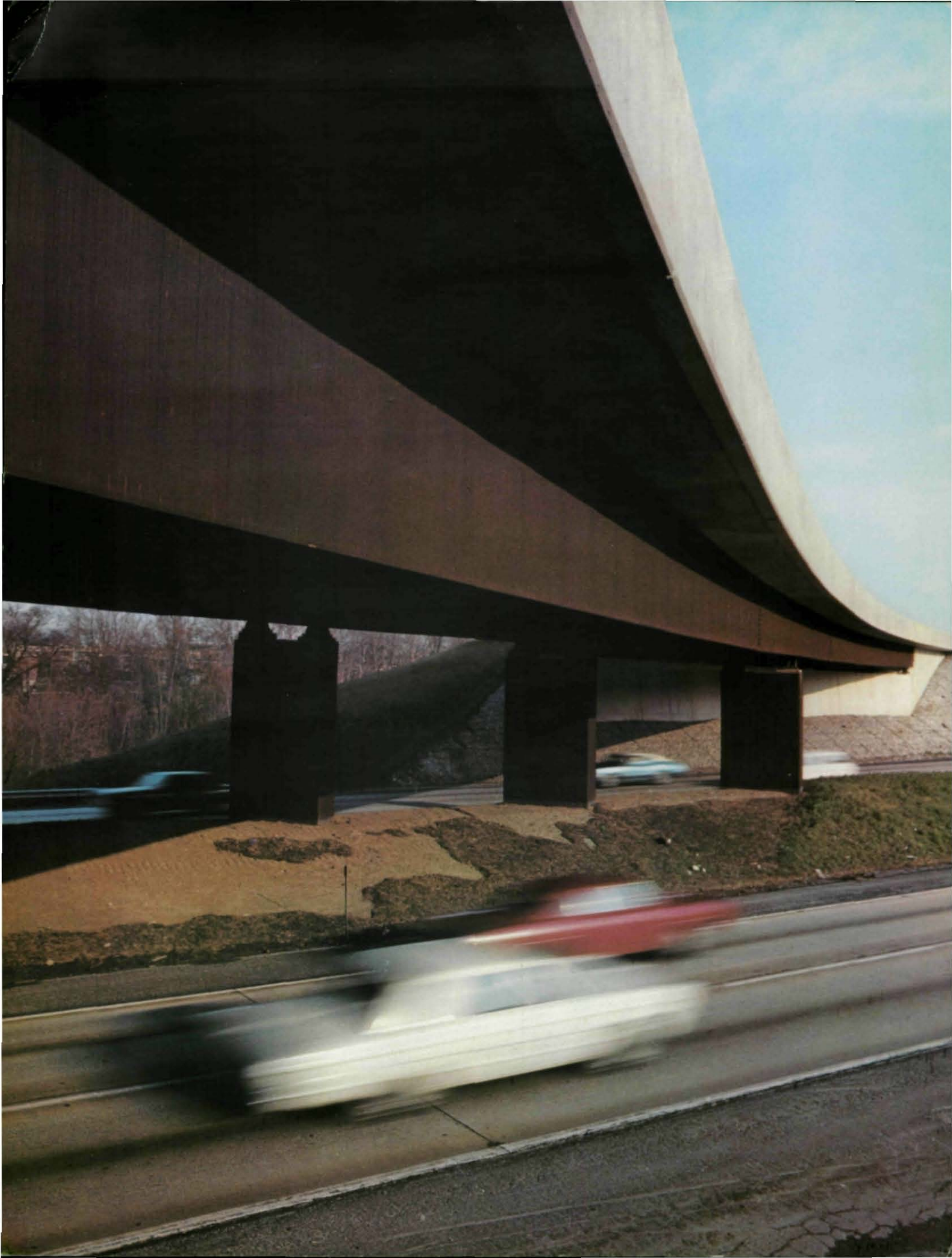


# Prize Bridges / 1972



000517  
000517





# Prize Bridges/1972

Steel bridges selected in the annual national competition conducted by the American Institute of Steel Construction as the most beautiful bridges opened to traffic in 1971.

## AWARD CATEGORIES

### LONG SPAN BRIDGES

Bridges having one or more spans of over 400 ft in length.

### MEDIUM SPAN BRIDGES, HIGH CLEARANCE

Bridges with vertical clearance of 35 ft or more, costing over \$500,000, and having no single span (as measured by the supporting foundations) longer than 400 ft in length.

### MEDIUM SPAN BRIDGES, LOW CLEARANCE

Bridges having vertical clearances of less than 35 ft, costing over \$500,000, and having no single span (as measured by the supporting foundations) longer than 400 ft in length.

### SHORT SPAN BRIDGES

Bridges having fixed spans and costing less than \$500,000.

### HIGHWAY GRADE SEPARATION BRIDGES

Bridges whose basic purpose is highway grade separation as contrasted to the above categories.

### ELEVATED HIGHWAYS OR VIADUCTS

Bridges having more than five spans, which cross over one or more established traffic lanes, and which may afford access for pedestrian travel and for parking.

### MOVABLE SPAN BRIDGES

Bridges having a movable span.

### SPECIAL PURPOSE BRIDGES

Includes pedestrian overpass bridges, and other special purpose bridges not identifiable to one of the above categories.







*L. to r.: Richards, Mains, Voorhees, Fox, Rinne.*

#### **JURY OF AWARDS**

**GERARD F. FOX, M.ASCE**

Partner, Howard, Needles, Tammen & Bergendoff  
New York, New York

**ROBERT M. MAINS, F.ASCE**

Professor, Civil and Environmental Engineering  
Washington University  
St. Louis, Missouri

**ROBERT B. RICHARDS, F.ASCE**

President, DeLeuw, Cather & Co.  
Chicago, Illinois

**JOHN E. RINNE, F.ASCE**

President-elect, American Society of Civil Engineers  
Earl and Wright  
San Francisco, California

**ALAN M. VOORHEES, M.ASCE**

Former President, American Institute of Planners  
Alan M. Voorhees & Associates, Inc.  
McLean, Virginia

000518

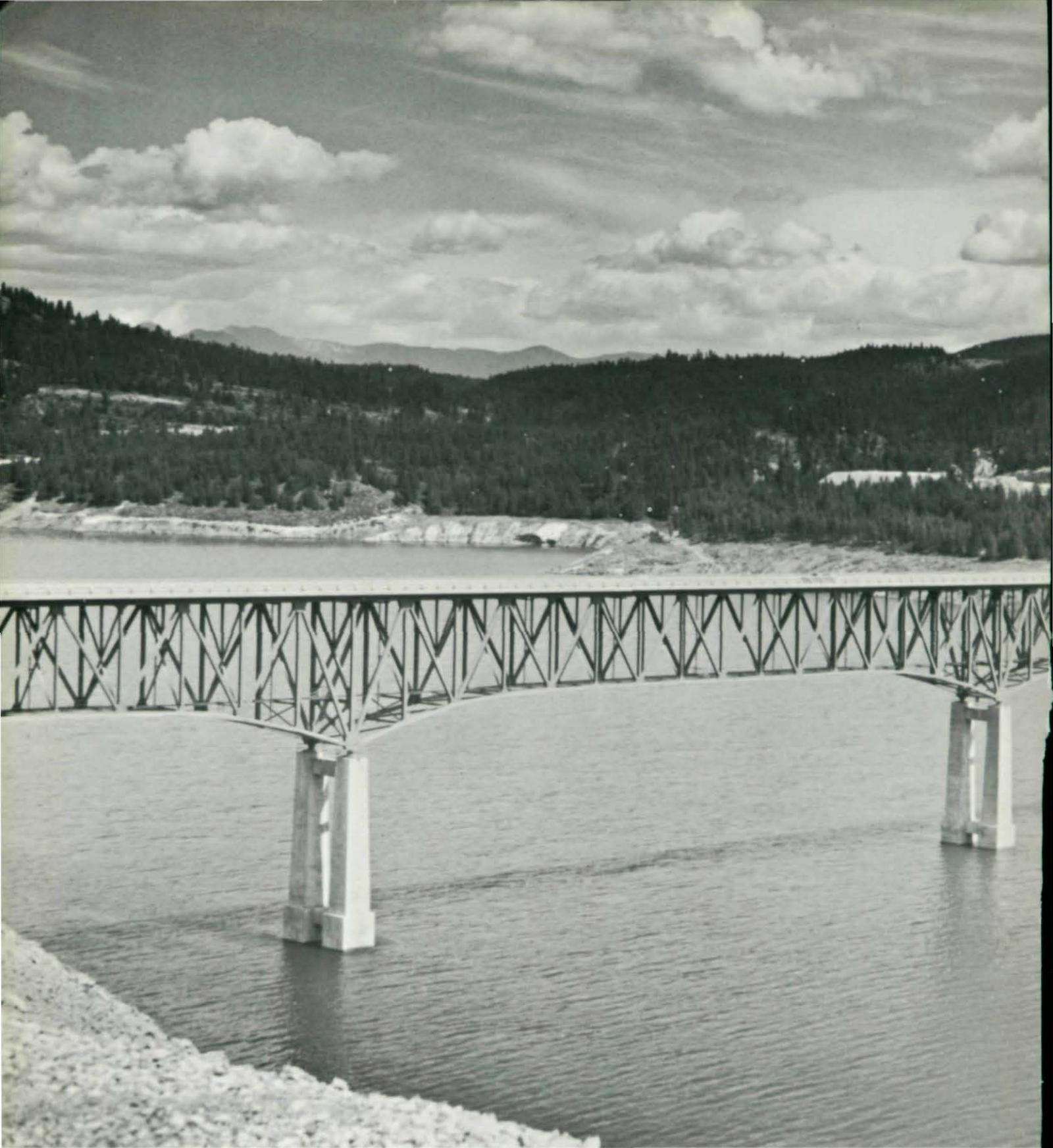
The enduring beauty of steel bridges is eloquent tribute to the vision and skill of the men who plan, design and build them. The bridge designer of today is both artist and engineer. He understands the potential for strength and beauty which is inherent in steel structures, and he knows that aesthetic appearance can be achieved at no sacrifice of efficiency or economy. The simple grace of a highway overpass, no less than the majestic sweep of a river crossing, reflects a creative integration of structure, function and form, skillfully executed in beautiful bridges of steel.

To promote a more widespread appreciation of the aesthetics of steel bridges and to honor the architectural excellence of modern bridge design, the American Institute of Steel Construction sponsors an annual Prize Bridge Competition. Each year a distinguished Jury of Awards composed of leading educators, architects, and engineers, selects the steel bridges which it judges to be the most beautiful of those opened to traffic in the United States during the previous year.

To establish an equitable basis for competition, awards are made in each of several contest classifications. Size, cost and operating conditions determine the class in which each entry is eligible to compete. The prize winning bridges are marked with a stainless steel plaque, and the designers, owners and steel fabricators are awarded engraved certificates in recognition of their contribution and achievement.

The American Institute of Steel Construction sponsors this competition and awards the prizes in the belief that it is helping to render a public service by stimulating a lasting interest in improved bridge design.

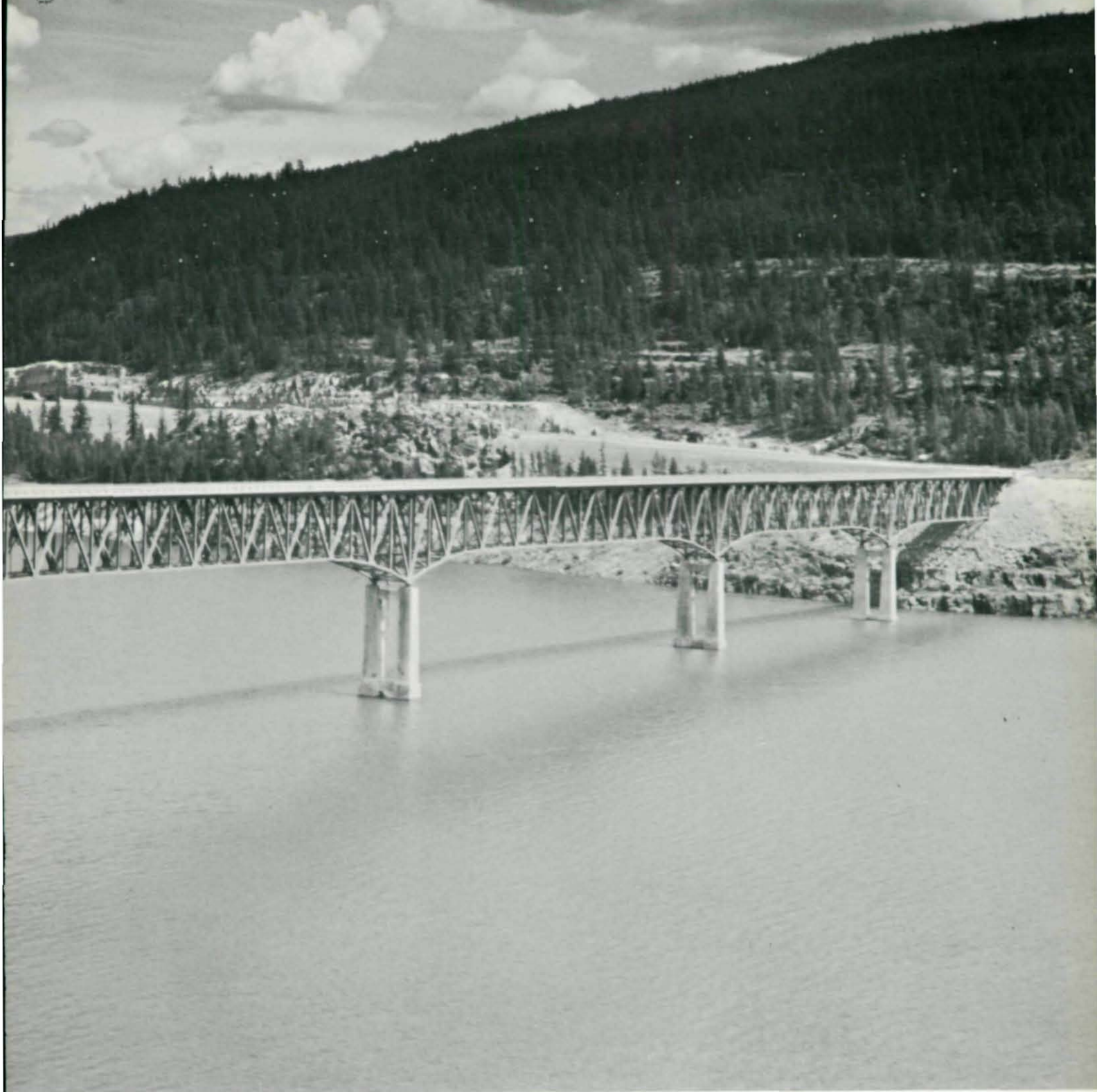




## Koocanusa Lake Bridge

PRIZE BRIDGE 1972 / LONG SPAN

*Jurors' Comments: "This is a very graceful structure. The piers and the superstructure are attractively proportioned. The careful detailing of the trusses is interestingly and well handled. Beautifully done."*



LIBBY, MONTANA

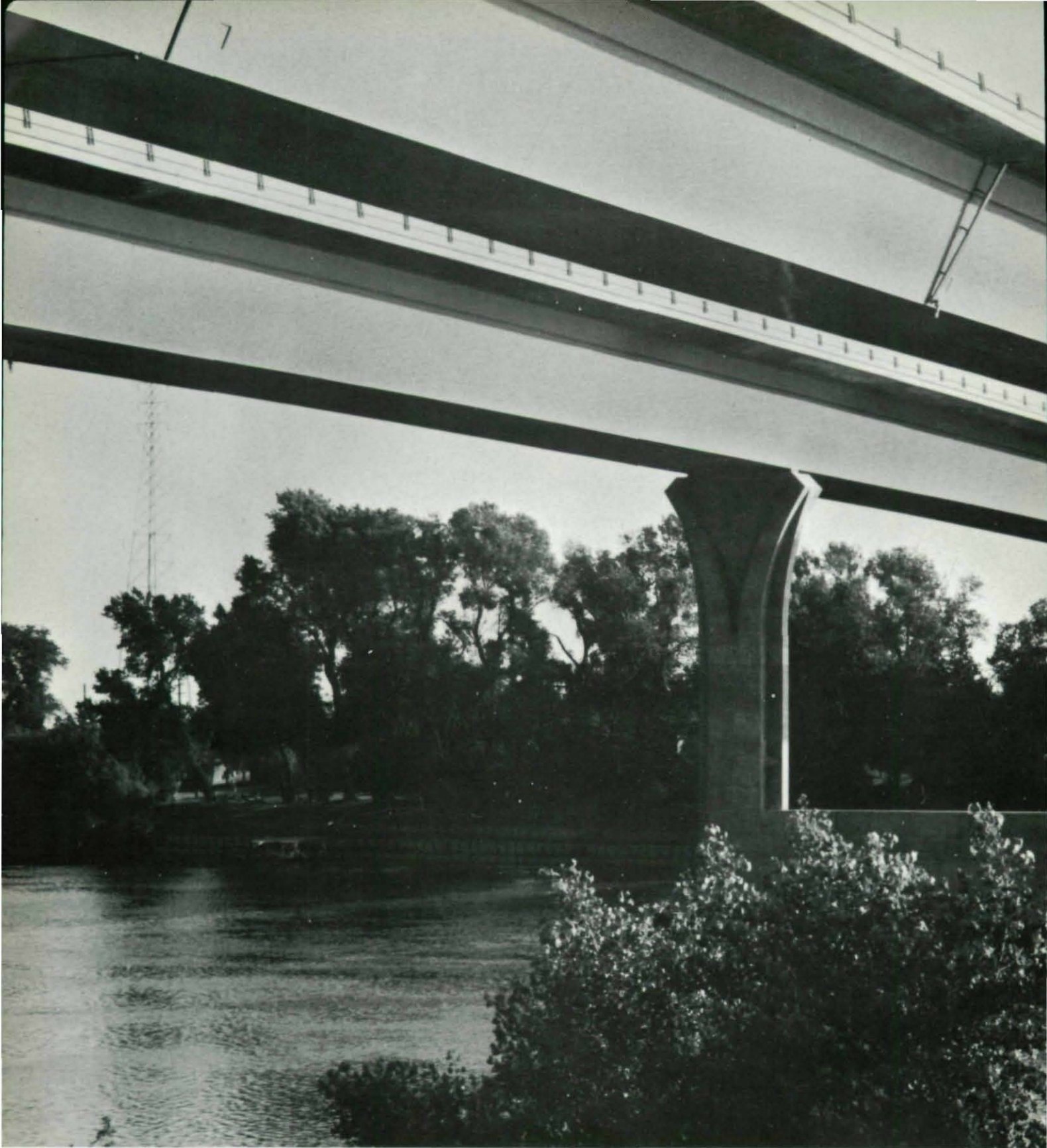
DESIGNER Morrison-Maierle, Inc., Helena, Montana

OWNERS U.S. Army Corps of Engineers, Washington, D.C.  
and U.S. Forest Service, Washington, D.C.

GENERAL CONTRACTORS R. A. Heintz Construction Co., Portland, Oregon  
Willamette-Western Corp., Portland, Oregon

FABRICATOR The Coeur d'Alenes Company, Spokane, Washington





## Sacramento River Bridge at Bryte Bend

PRIZE BRIDGE 1972 / MEDIUM SPAN, HIGH CLEARANCE

*Jurors' Comments: "This is a very attractive bridge. Its long spans, well proportioned superstructure, and sculptured piers blend well with the landscape and add interest. The separation of the roadways is very well handled."*





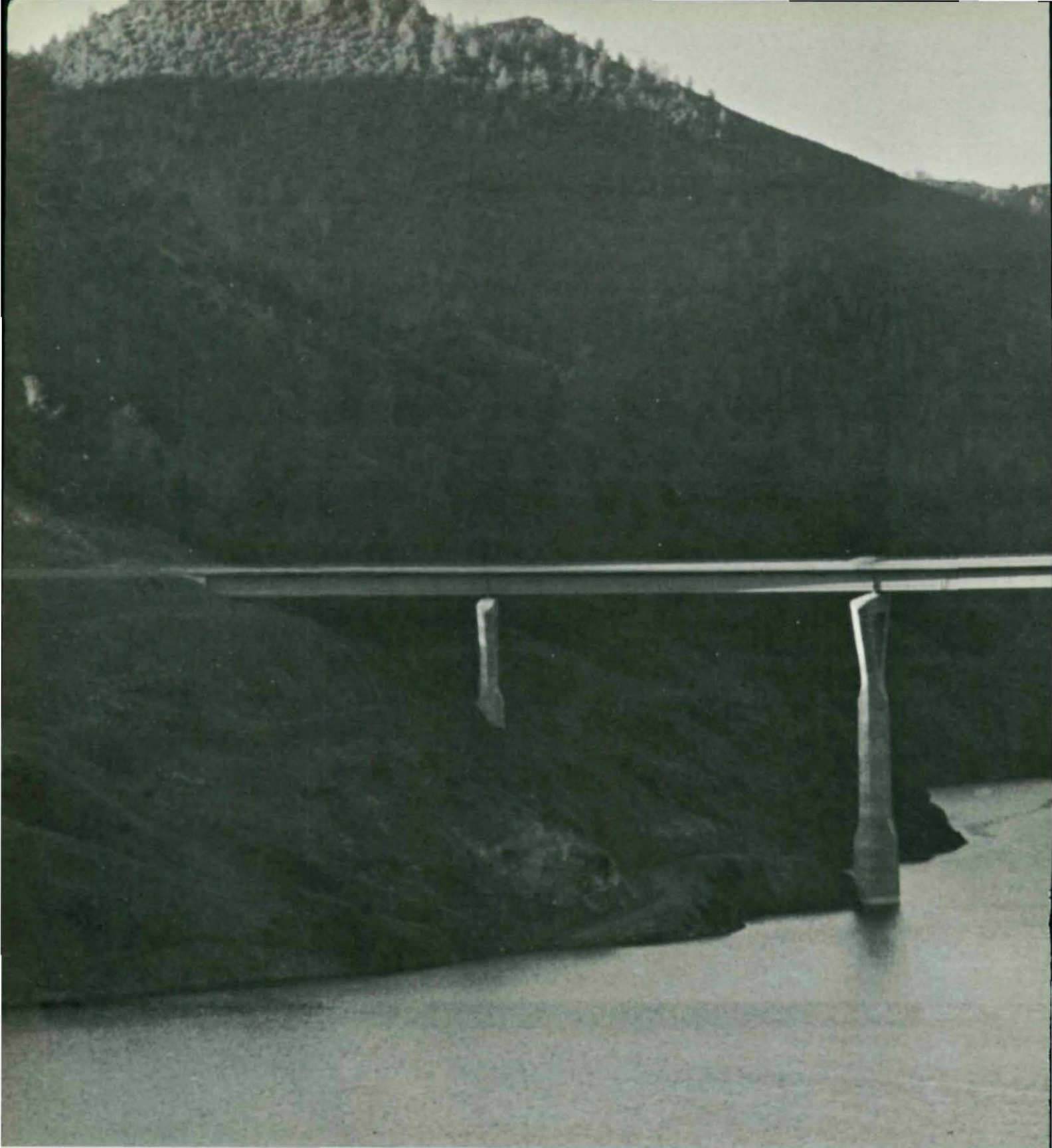
## SACRAMENTO, CALIFORNIA

DESIGNER State of California, Sacramento, California

OWNER State of California, Sacramento, California

GENERAL CONTRACTOR Murphy Pacific Corporation, Oakland, California

FABRICATOR Murphy Pacific Corporation, Oakland, California

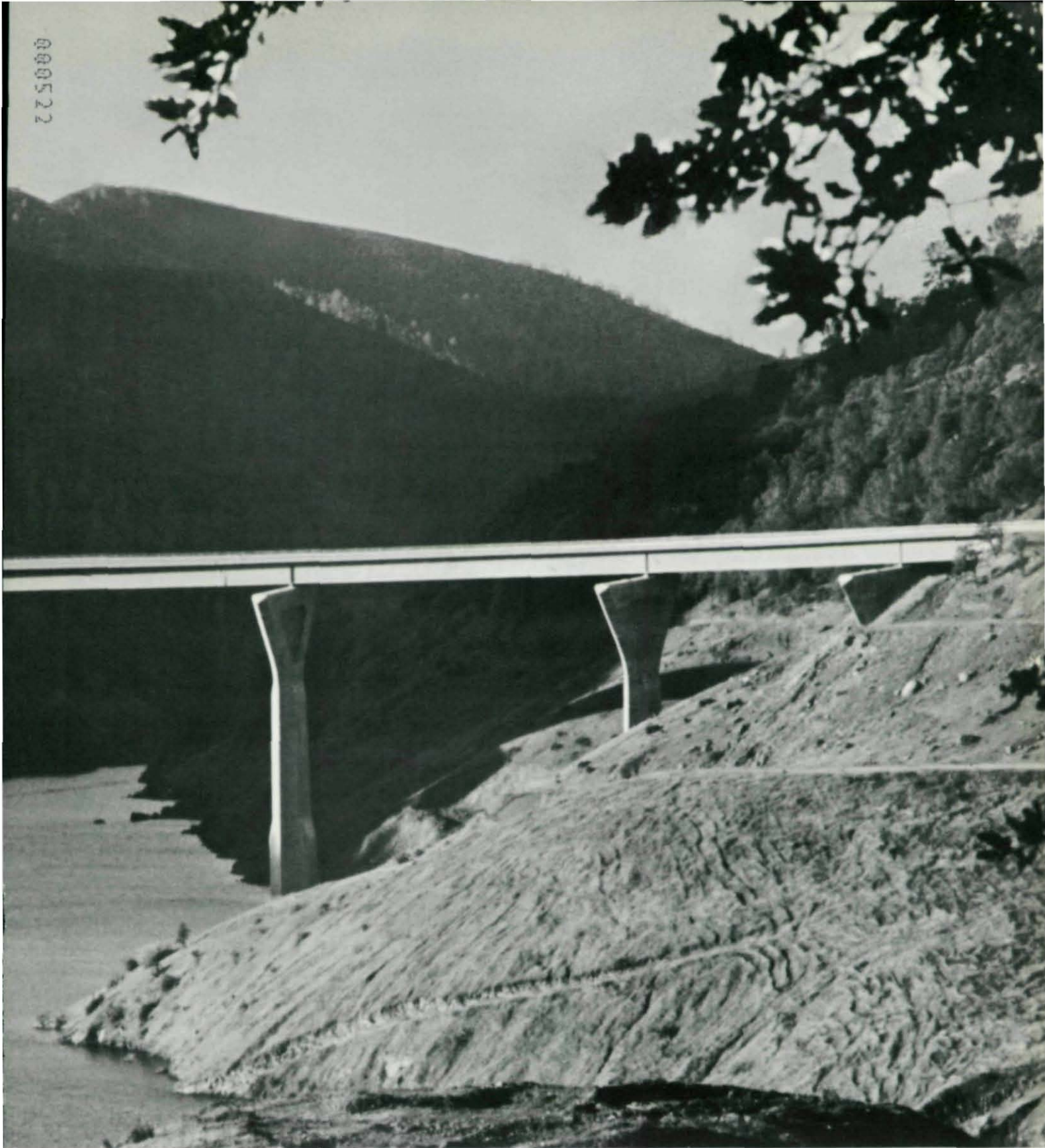


## Tuolumne River Bridge

PRIZE BRIDGE 1972 / MEDIUM SPAN, LOW CLEARANCE

*Jurors' Comments: "This graciously sweeping bridge fits beautifully into its setting. The clean curving superstructure and the sculptured piers are very pleasing."*





NEAR SONORA, CALIFORNIA

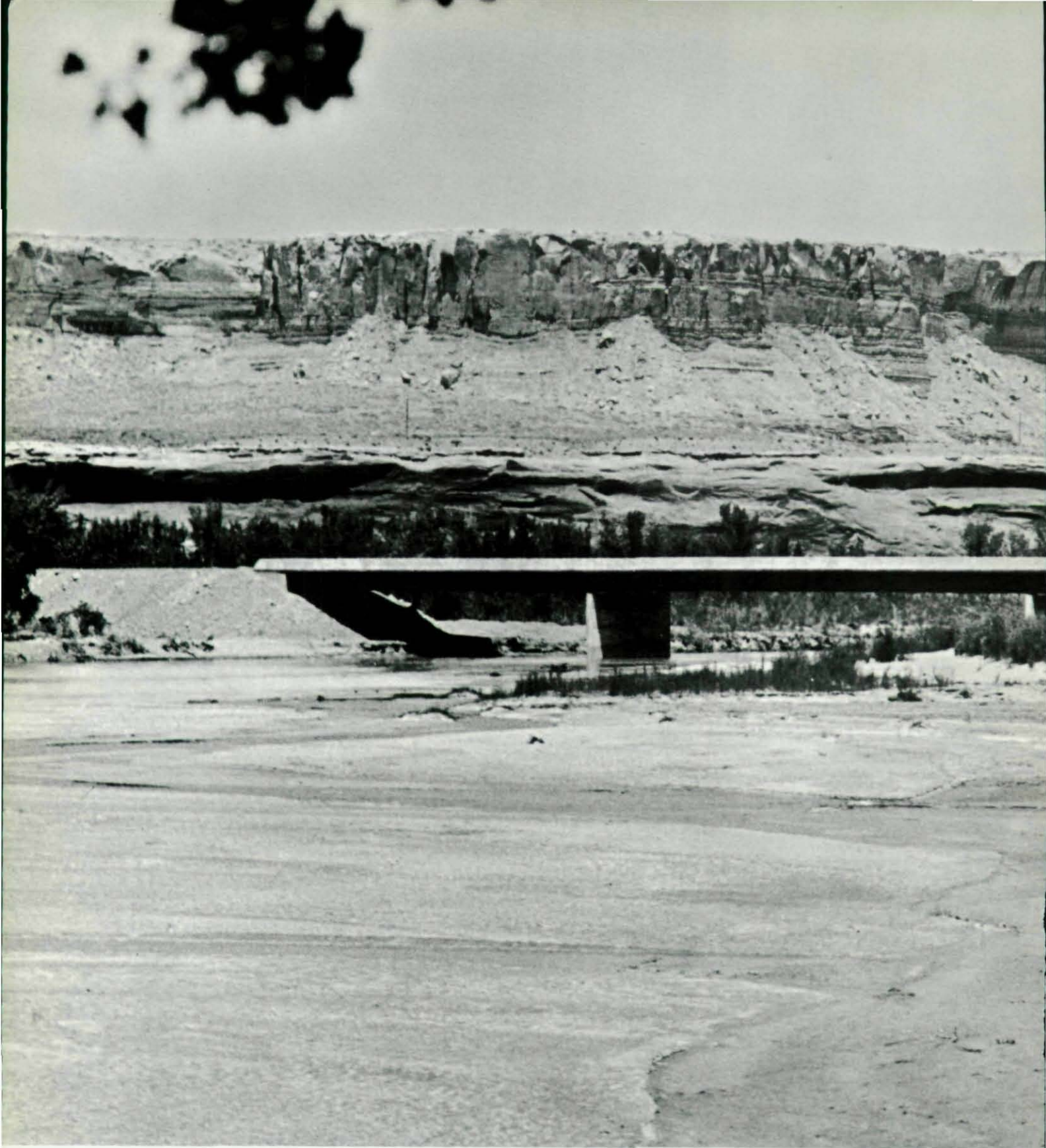
DESIGNER State of California, Sacramento, California

OWNER State of California, Sacramento, California

GENERAL CONTRACTOR Peter Kiewit Sons' Co., Omaha, Nebraska

FABRICATOR San Jose Steel Company, Inc., San Jose, California





## Sand Island Bridge

PRIZE BRIDGE 1972 / SHORT SPAN

*Jurors' Comments: "This bridge is carefully designed and sited to complement the landscape. It has just the right elevation and scale for its location. Even the materials used blend appropriately with the surroundings."*





WEST OF BLUFF, UTAH

DESIGNER Utah State Department of Highways, Salt Lake City, Utah

OWNER San Juan County, Monticello, Utah

GENERAL CONTRACTOR W. W. Clyde & Company, Springville, Utah

FABRICATOR Mountain States Steel Company, Orem, Utah



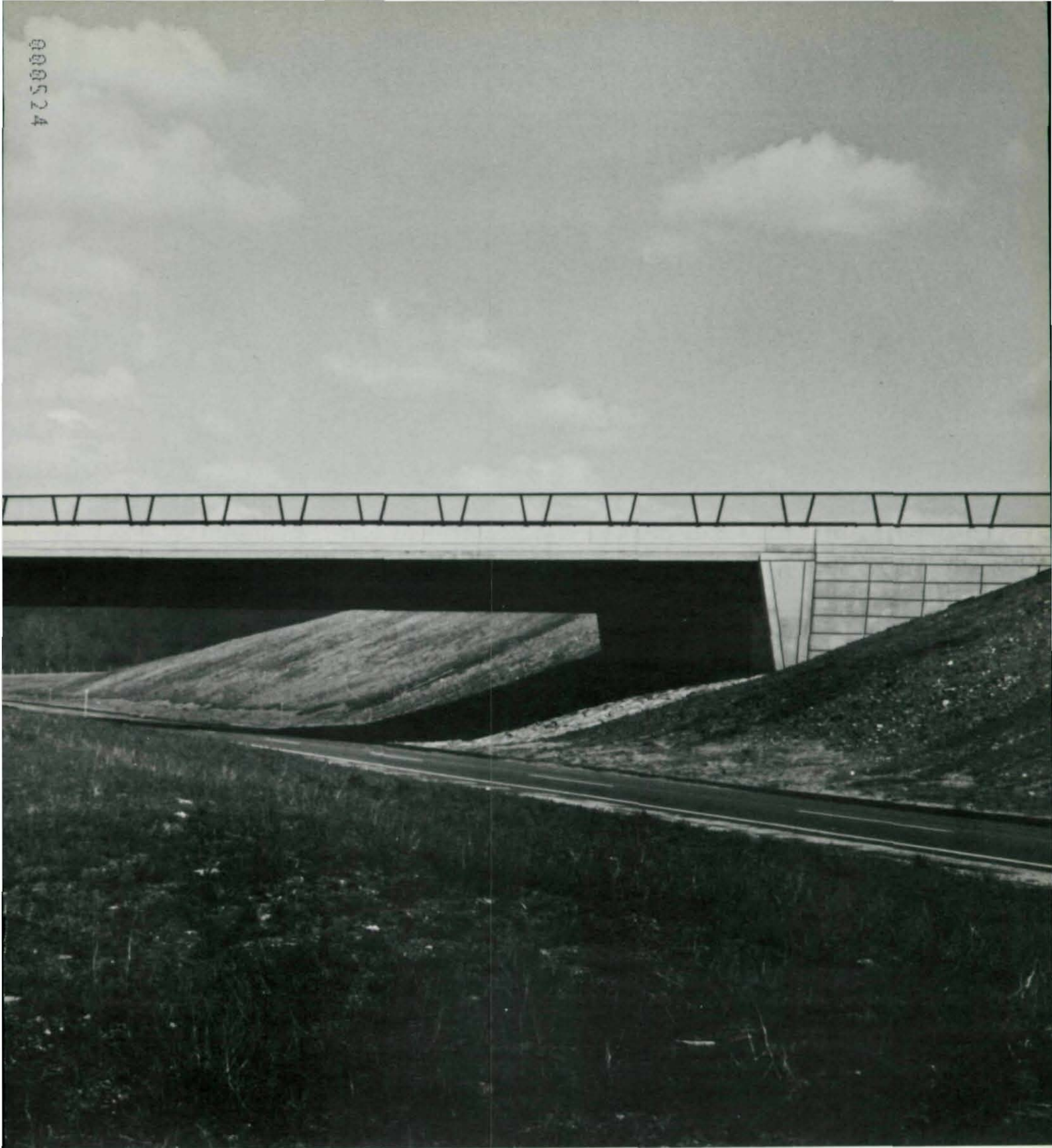


## Scott Hill Road Bridge

PRIZE BRIDGE 1972 / HIGHWAY GRADE SEPARATION

*Jurors' Comments: "This structure is characterized by its simplicity.  
Its strong attractive lines seem to demand the viewer's respect."*





LEBANON, CONNECTICUT

DESIGNER Storch Engineers, Florham Park, New Jersey

OWNER State of Connecticut, Hartford, Connecticut

GENERAL CONTRACTOR Savin Brothers, Inc., Bloomfield, Connecticut

FABRICATOR Bethlehem Steel Corporation, Bethlehem, Pennsylvania







WASHINGTON, D.C.

## Roadways Bridge SW and WS of Interchange C

PRIZE BRIDGE 1972 /  
ELEVATED HIGHWAYS OR VIADUCTS

*Jurors' Comments: "With its long, sweeping, and free flowing lines, this bridge is attractive from every viewpoint. The curved box girder and cantilever ribs are expertly detailed, and the total effect is clean and uncluttered. It illustrates the aesthetic possibilities of a box girder type bridge."*

DESIGNER Richardson, Gordon and Associates  
Philadelphia, Pennsylvania

ARCHITECTURAL CONSULTANT Harbeson Hough Livingston and  
Larson/Architects/Planners  
Philadelphia, Pennsylvania

OWNER Government of the District of Columbia  
Washington, D.C.

GENERAL CONTRACTOR Head Construction Company  
Washington, D.C.

FABRICATOR American Bridge Division  
United States Steel  
Pittsburgh, Pennsylvania



## Berwick Bay Bridge—No. 80.46

PRIZE BRIDGE 1972 / MOVABLE SPAN

*Jurors' Comments: "A beautifully designed movable bridge. The machinery houses match and appropriately cap the towers. The side spans match the lift span. The top chord is carefully proportioned. A very commendable structure."*





BERWICK TO MORGAN CITY, LOUISIANA

DESIGNER Modjeski and Masters, Harrisburg, Pennsylvania

OWNER Southern Pacific Transportation Company, San Francisco, California

GENERAL CONTRACTORS Massman Construction Company, Kansas City, Missouri and  
John F. Beasley Construction Company, Dallas, Texas

FABRICATOR Vincennes Steel Corporation, Division of NOVO Corporation, Vincennes, Indiana









## Tenney Park Pedestrian Bridge

PRIZE BRIDGE 1972 / SPECIAL PURPOSE

*Jurors' Comments: "This bridge is sensitively  
tailored to fulfill its purpose and to match its location.  
Very attractive and yet basically functional."*

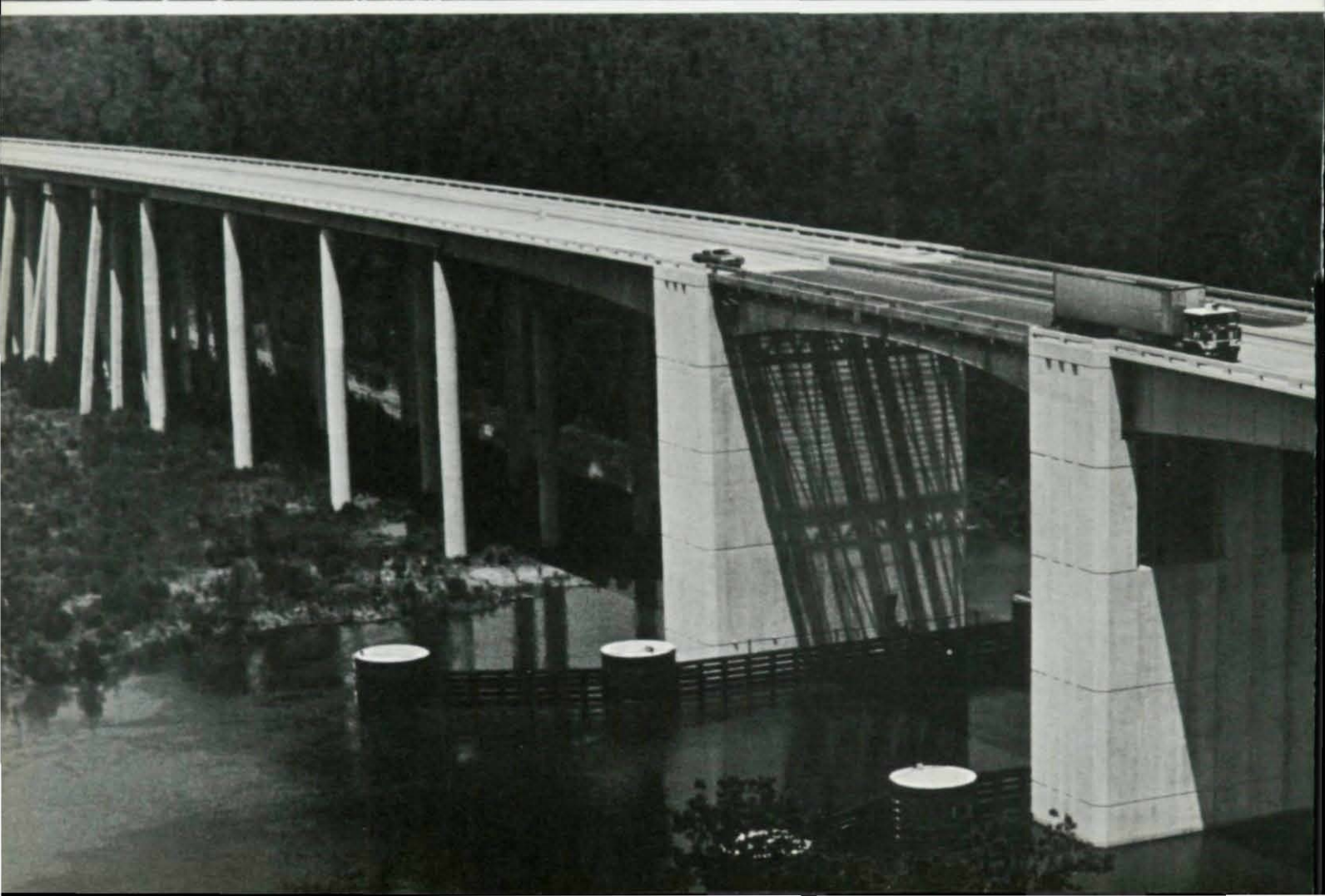
DESIGNER Arnold and O'Sheridan, Inc.  
Madison, Wisconsin

OWNER City of Madison, Madison, Wisconsin

GENERAL CONTRACTOR C & C/Bohrer, Inc., Madison, Wisconsin

FABRICATOR Theo. Kupfer Iron Works, Inc.  
Madison, Wisconsin







## Dent Bridge

AWARD OF MERIT 1972 / LONG SPAN

DESIGNER Howard, Needles, Tammen & Bergendoff  
Kansas City, Missouri

OWNER U.S. Army Corps of Engineers  
Washington, D.C.

GENERAL CONTRACTOR Hensel Phelps Construction Co.  
Greeley, Colorado

FABRICATOR Fought & Company  
A Division of Allied Equities Corporation  
Portland, Oregon

## East Pearl River Bridge

AWARD OF MERIT 1972 /  
MEDIUM SPAN, HIGH CLEARANCE

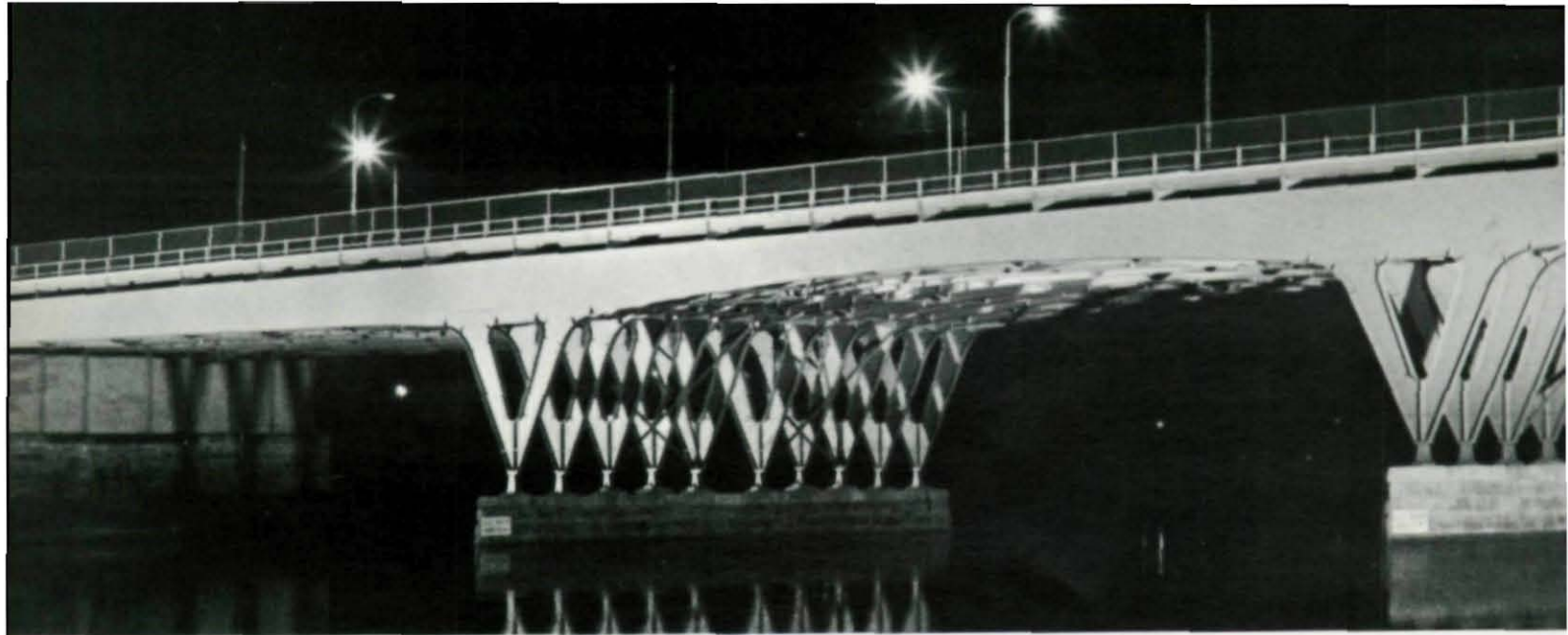
DESIGNERS (A Joint Venture): Barnard and Burk  
and Howard, Needles, Tammen & Bergendoff  
Baton Rouge, Louisiana

OWNERS State of Louisiana, Baton Rouge, Louisiana and  
State of Mississippi, Jackson, Mississippi

GENERAL CONTRACTOR (A Joint Venture):  
W. R. Fairchild Construction Company, Ltd.  
and J. W. Snowden Construction Company  
Hattiesburg, Mississippi

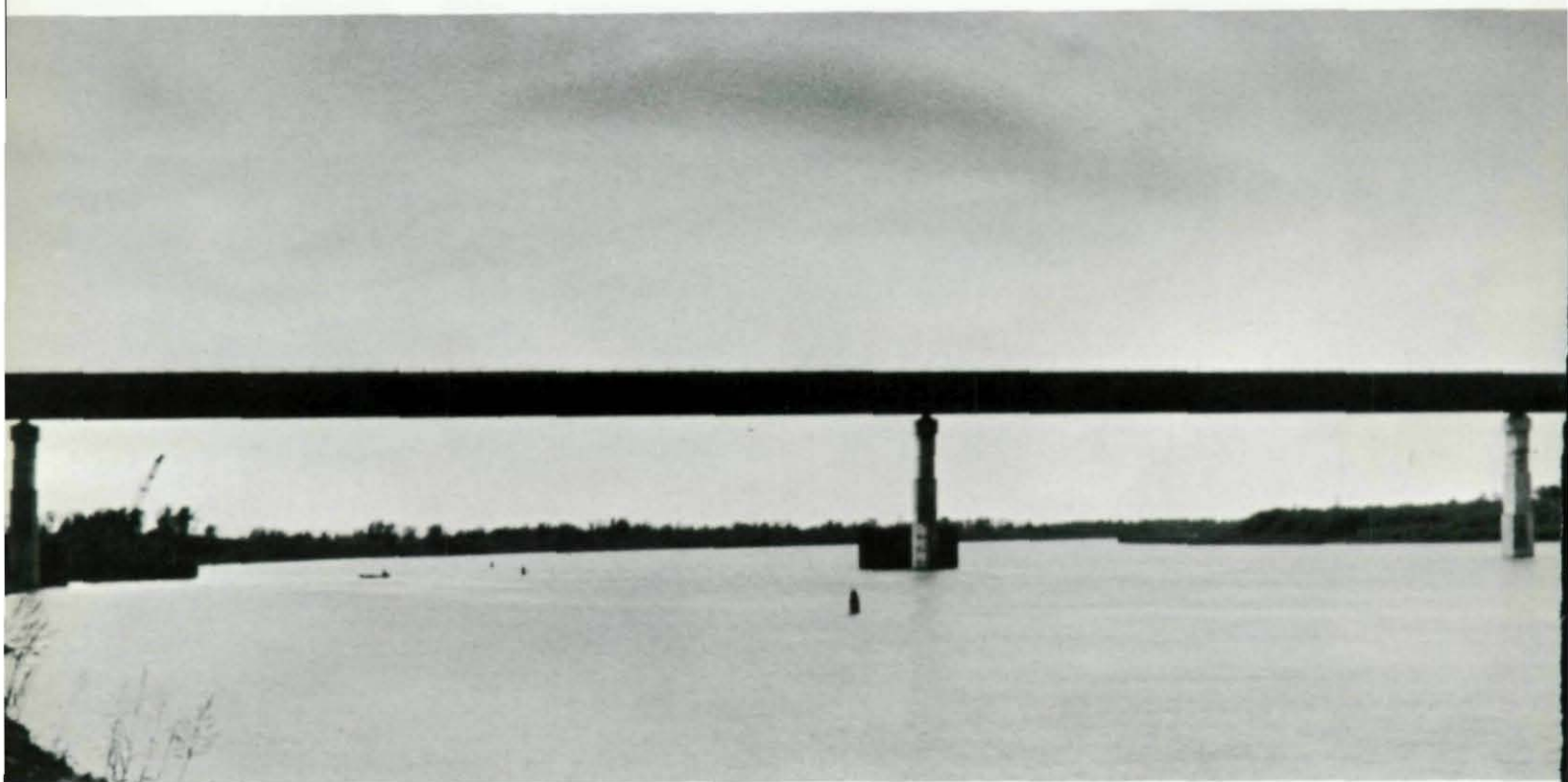
FABRICATOR Teledyne Irby Steel, Gulfport, Mississippi

ST. TAMMANY PARISH, LOUISIANA  
AND HANCOCK COUNTY, MISSISSIPPI



## **Girard Avenue Bridge Over the Schuylkill River**

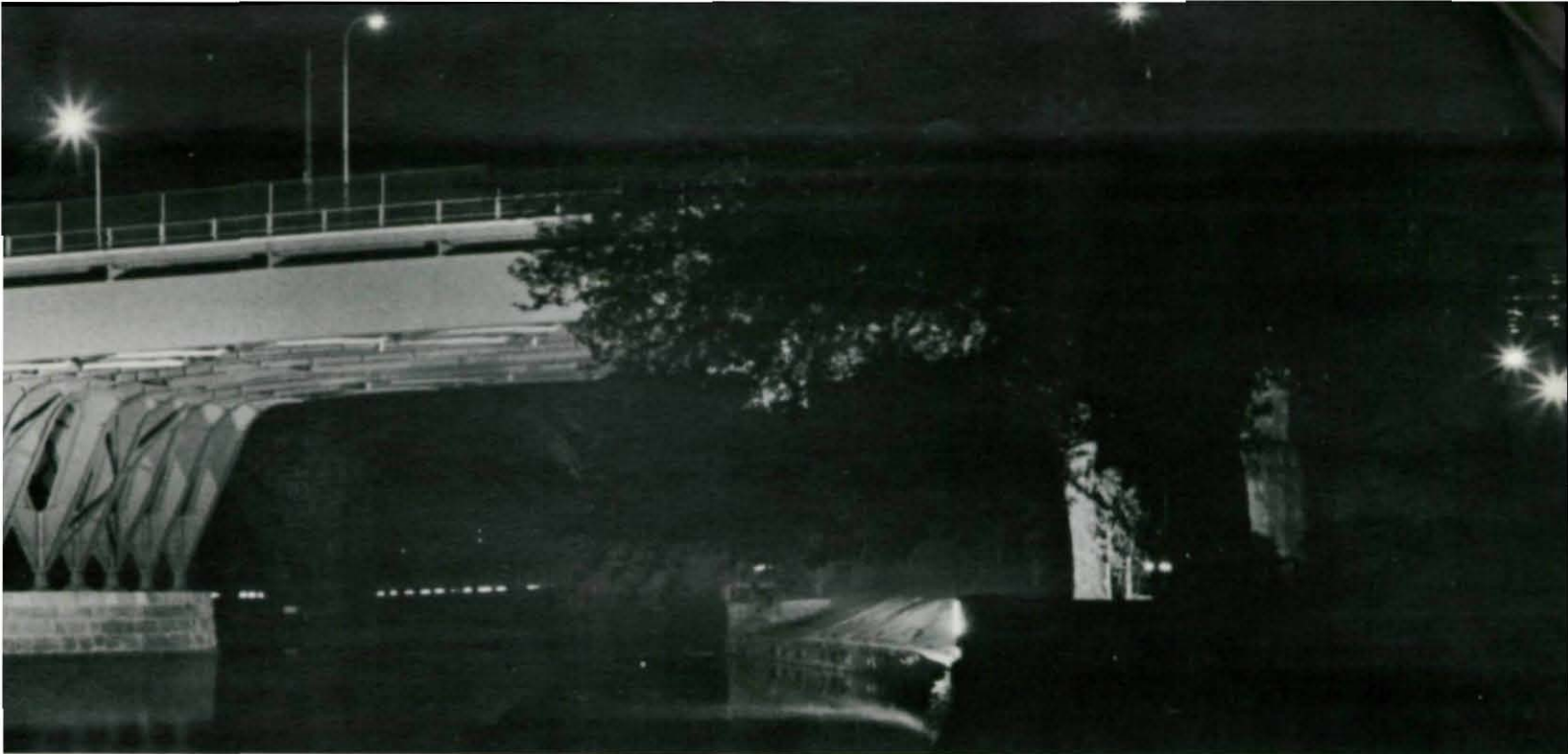
AWARD OF MERIT 1972 / MEDIUM SPAN, HIGH CLEARANCE



## **Kansas City Southern RR Bridge A-307 Over Arkansas River**

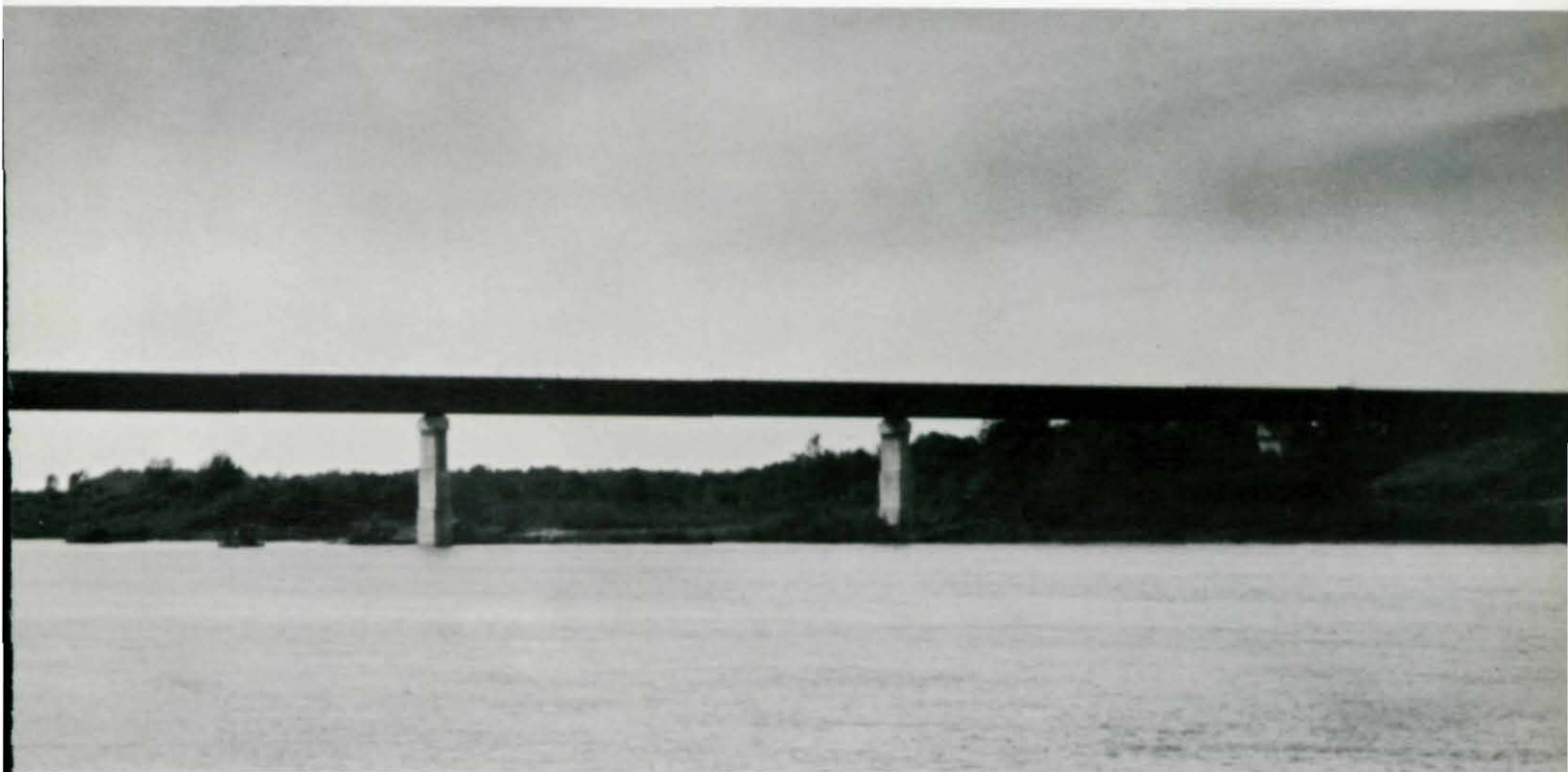
AWARD OF MERIT 1972 / MEDIUM SPAN, HIGH CLEARANCE





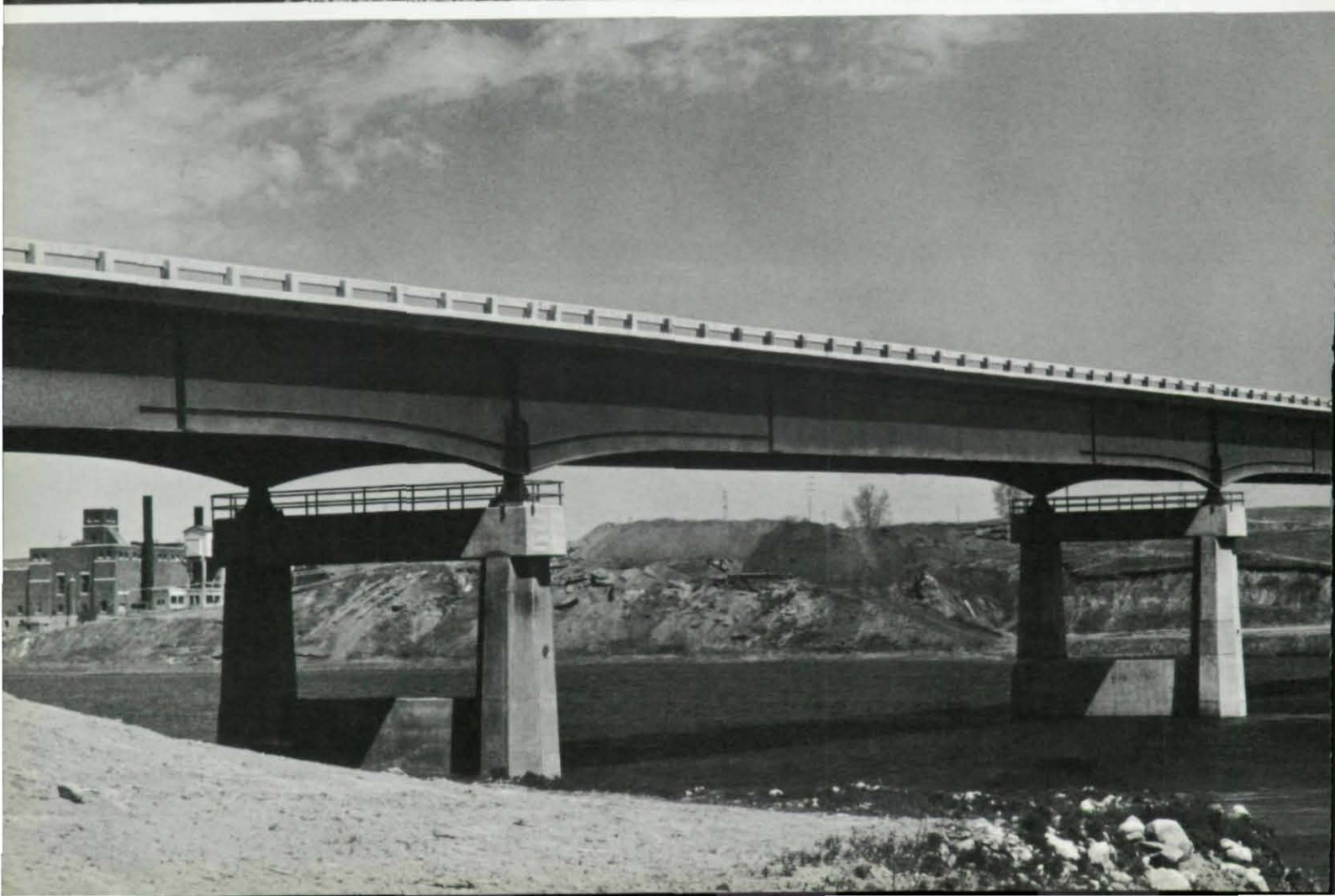
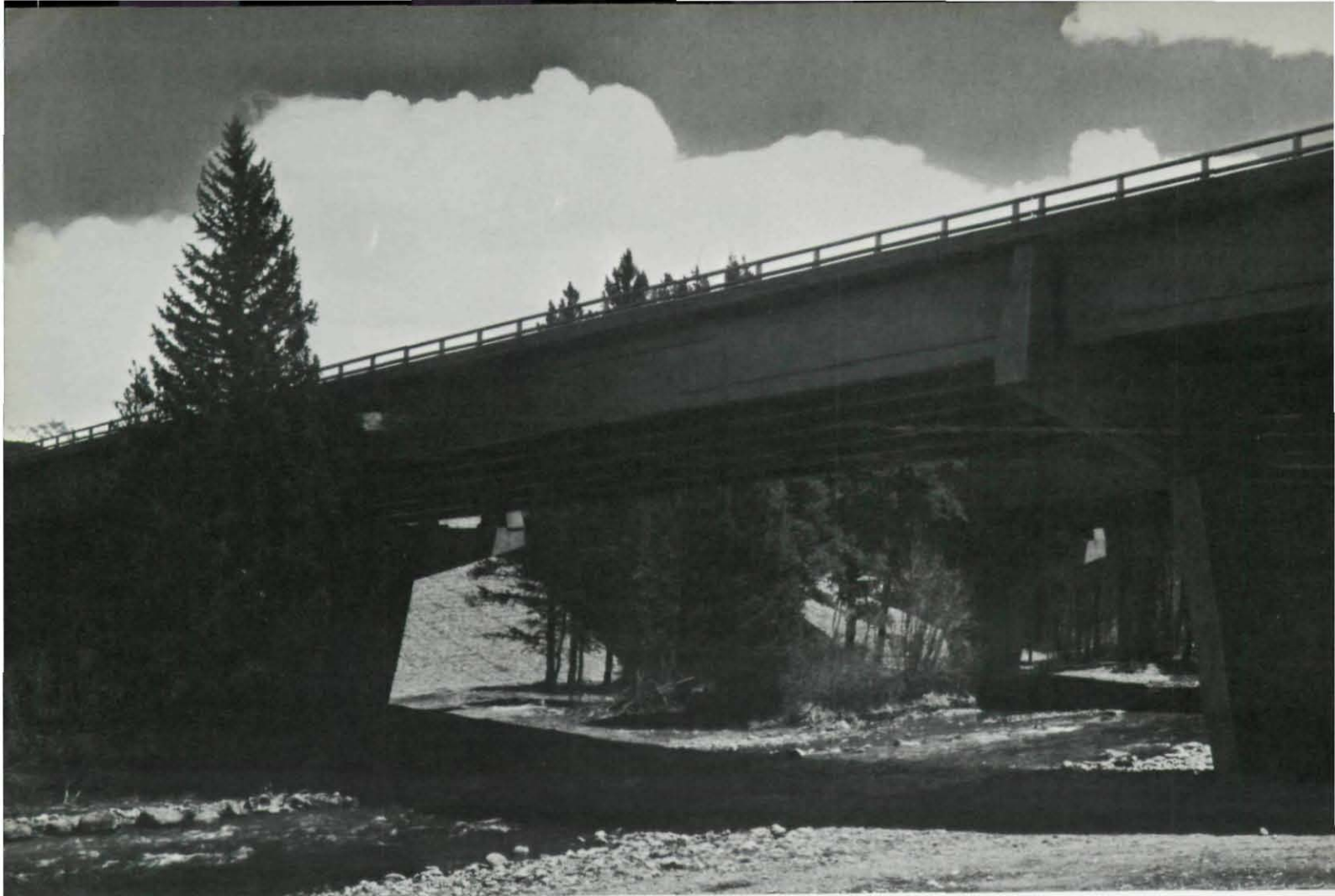
# PHILADELPHIA, PENNSYLVANIA

DESIGNER City of Philadelphia, Philadelphia, Pennsylvania  
 OWNER Commonwealth of Pennsylvania, Harrisburg, Pennsylvania  
 GENERAL CONTRACTOR Conduit & Foundation Corporation, Philadelphia, Pennsylvania  
 FABRICATOR Bethlehem Steel Corporation, Bethlehem, Pennsylvania



# REDLAND, SEQUOYAH AND LaFLORE COUNTIES, OKLAHOMA

DESIGNERS Forrest and Cotton, Inc., Dallas, Texas and  
 Wolchuk and Mayrbaur, New York, New York  
 OWNER The Kansas City Southern Railway Company, Kansas City, Missouri  
 GENERAL CONTRACTORS *Superstructure:* Bethlehem Steel Corporation, Bethlehem, Pennsylvania  
*Substructure:* Peter Kiewit Sons' Co., Omaha, Nebraska  
 FABRICATOR Bethlehem Steel Corporation, Bethlehem, Pennsylvania







SILVERTHORNE, COLORADO

## Blue River Bridges on I-70

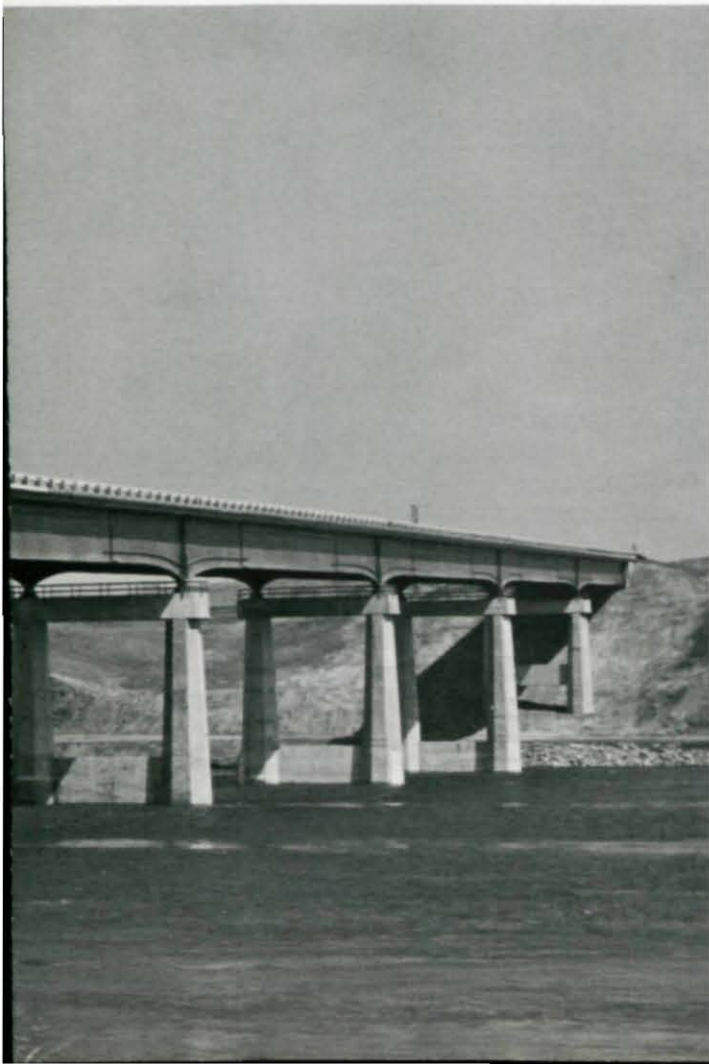
AWARD OF MERIT 1972 /  
MEDIUM SPAN, LOW CLEARANCE

DESIGNER State of Colorado, Denver, Colorado

OWNER State of Colorado, Denver, Colorado

GENERAL CONTRACTOR A. S. Horner Construction Co., Inc.  
Denver, Colorado

FABRICATOR The Midwest Steel & Iron Works Co.  
Denver, Colorado



## Washburn Bridge

AWARD OF MERIT 1972 /  
MEDIUM SPAN, LOW CLEARANCE

DESIGNER North Dakota State Highway Department  
Bismarck, North Dakota

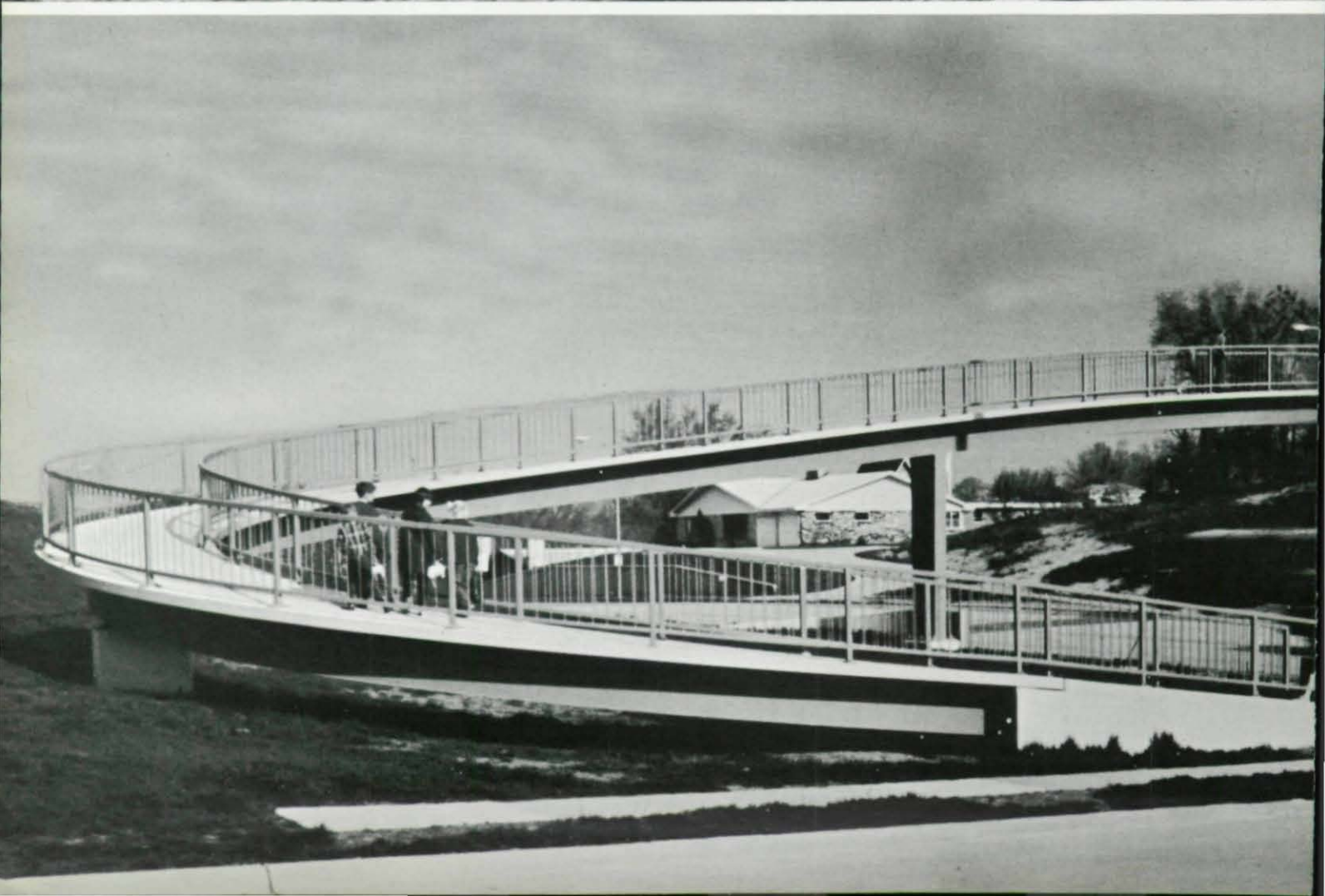
OWNER State of North Dakota  
Bismarck, North Dakota

GENERAL CONTRACTOR Sletten Construction Company  
Great Falls, Montana

FABRICATOR Capitol Steel & Iron Company  
Oklahoma City, Oklahoma

WASHBURN, NORTH DAKOTA









## Newton Ford Bridge

AWARD OF MERIT 1972 / SHORT SPAN

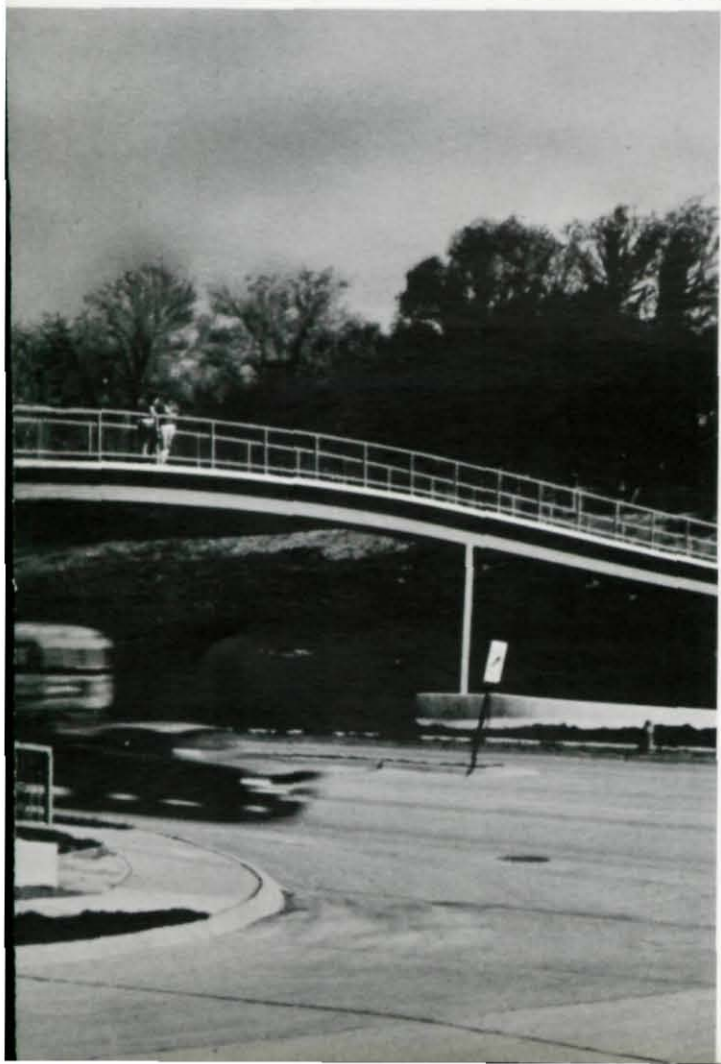
DESIGNER Betts Engineering Co., Inc.  
Chattanooga, Tennessee

ARCHITECTURAL CONSULTANT James R. Franklin, Architect  
Chattanooga, Tennessee

OWNER Tennessee Department of Conservation  
Nashville, Tennessee

GENERAL CONTRACTORS B. H. Phillips Construction Company  
Cookeville, Tennessee and  
Sheco Construction Company  
Nashville, Tennessee

FABRICATOR Graham Structures, Inc.  
Ashland City, Tennessee



## 78th and Maple Street Pedestrian Bridge

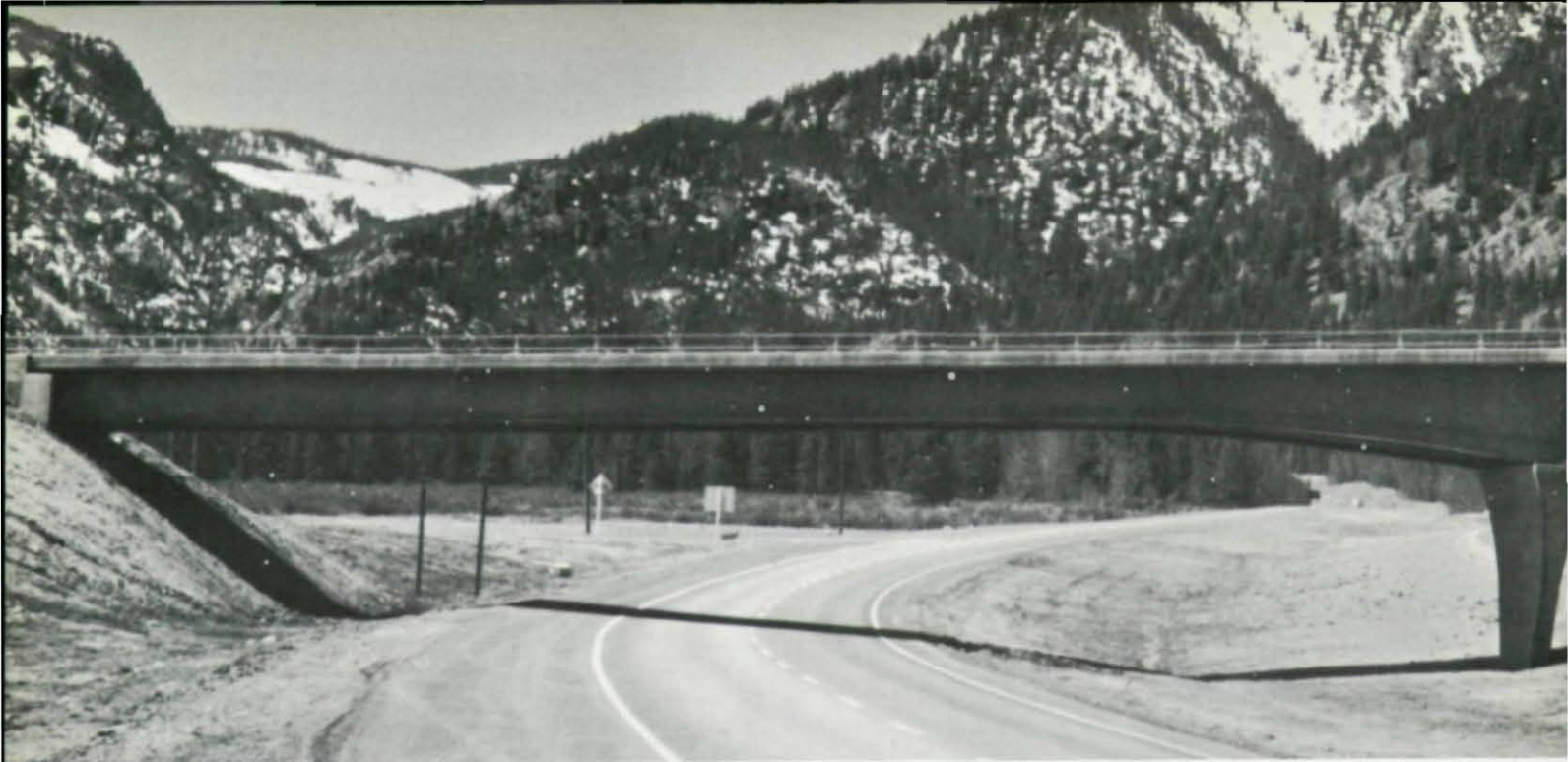
AWARD OF MERIT 1972 / SPECIAL PURPOSE

DESIGNER Richardson, Gordon and Associates  
Pittsburgh, Pennsylvania

OWNERS State of Nebraska, Lincoln, Nebraska and  
City of Omaha, Omaha, Nebraska

GENERAL CONTRACTOR Foster-Smetana Co., Omaha, Nebraska

FABRICATOR Paxton & Vierling Steel Co.  
Omaha, Nebraska



## **Frisco East Interchange Bridge on I-70**

AWARD OF MERIT 1972 / HIGHWAY GRADE SEPARATION



## **I-95 Southbound Bridge over John F. Kennedy Memorial Highway**

AWARD OF MERIT 1972 / HIGHWAY GRADE SEPARATION





FRISCO, COLORADO

DESIGNER State of Colorado, Denver, Colorado

OWNER State of Colorado, Denver, Colorado

GENERAL CONTRACTORS Colorado Constructors, Inc., Denver, Colorado and  
A. S. Horner Construction Co., Inc., Denver, Colorado

FABRICATOR The Midwest Steel & Iron Works Co., Denver, Colorado



BALTIMORE, MARYLAND

DESIGNERS Knoerle, Bender, Stone & Associates, Inc., Baltimore, Maryland  
Matz, Childs & Associates, Inc., Baltimore, Maryland

ARCHITECTURAL CONSULTANT Urban Design Concept Associates, Baltimore, Maryland

OWNER City of Baltimore, Baltimore, Maryland

GENERAL CONTRACTOR Interstate Bridge Company of Maryland, Inc., New Market, Maryland

FABRICATOR Cumberland Bridge Company, Camp Hill, Pennsylvania







HOQUIAM, WASHINGTON

## Hoquiam River Bridge

AWARD OF MERIT 1972 / MOVABLE SPAN

DESIGNER Washington State Highway Commission  
Olympia, Washington

ARCHITECTURAL CONSULTANT Edward J. Green, Olympia, Washington

OWNER State of Washington, Olympia, Washington

GENERAL CONTRACTOR Willamette-Western Corp., Portland, Oregon

FABRICATOR Northwest Steel Fabricators, Inc.  
Vancouver, Washington

## John's Pass Bridge

AWARD OF MERIT 1972 / MOVABLE SPAN

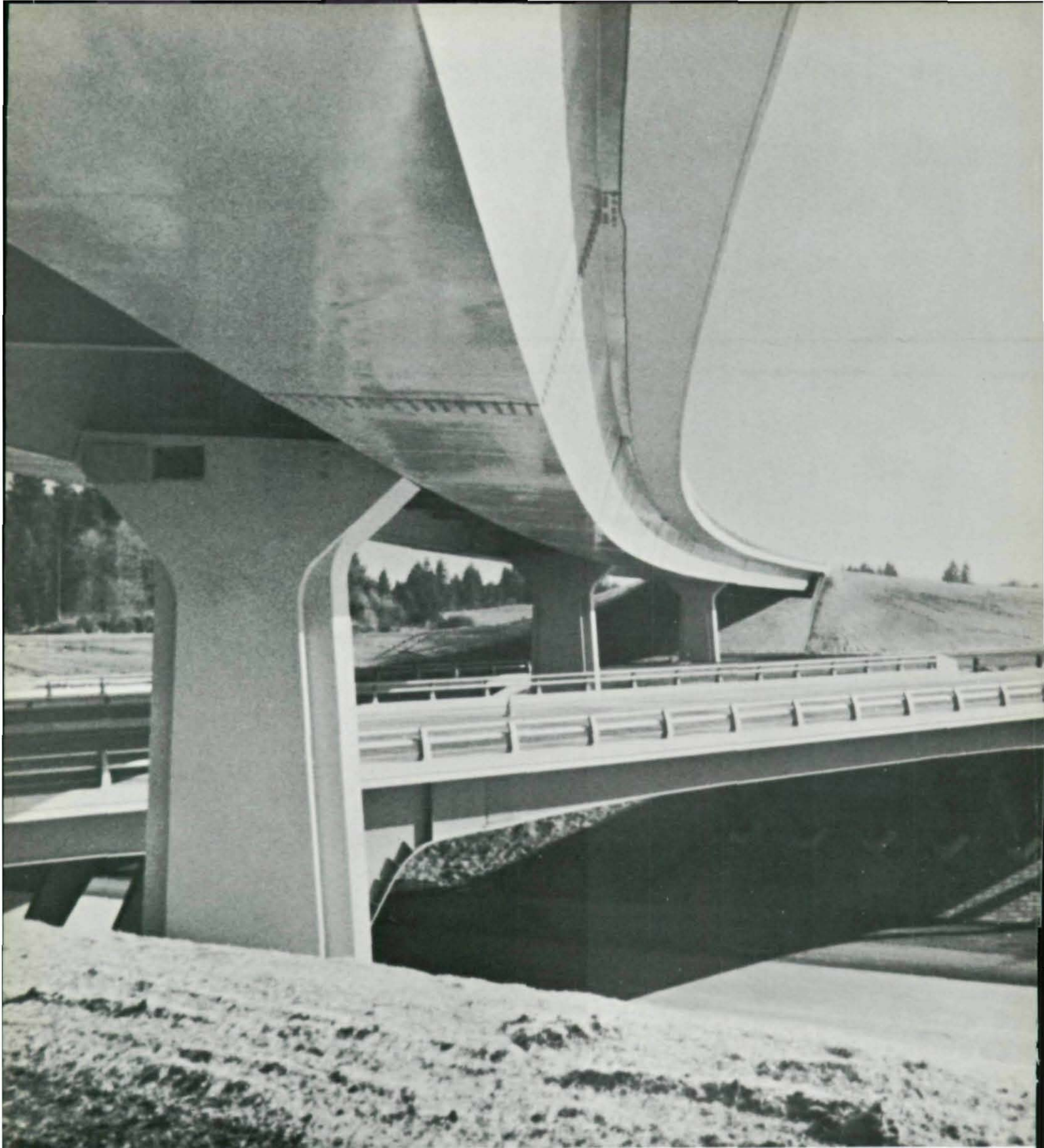
DESIGNER W. K. Daugherty, Lake City, Florida

OWNER State of Florida, Tallahassee, Florida

GENERAL CONTRACTOR Scott Construction Company  
Sarasota, Florida

FABRICATOR Nashville Bridge Company  
Nashville, Tennessee

TREASURE ISLAND AND MADEIRA BEACH, FLORIDA



TUALATIN, OREGON

## **L<sup>S</sup> Overcrossing Bridge of I-5, I-205 Interchange**

AWARD OF MERIT 1972 /  
HIGHWAY GRADE SEPARATION

DESIGNER Oregon Department of Transportation  
Salem, Oregon

OWNER State of Oregon, Salem, Oregon

GENERAL CONTRACTOR Guy F. Atkinson Company  
South San Francisco, California

FABRICATOR American Bridge Division, United States Steel  
Pittsburgh, Pennsylvania







American Institute of Steel Construction  
101 Park Avenue, New York, N.Y. 10017

