

Prize Bridges / 1973

000000





Prize Bridges / 1973

Steel bridges selected in the annual national competition conducted by the American Institute of Steel Construction as the most beautiful bridges opened to traffic in 1972.

AWARD CATEGORIES

LONG SPAN BRIDGES

Bridges having one or more spans of over 400 ft in length.

MEDIUM SPAN BRIDGES, HIGH CLEARANCE

Bridges with vertical clearance of 35 ft or more, costing over \$500,000, and having no single span (as measured by the supporting foundations) longer than 400 ft in length.

MEDIUM SPAN BRIDGES, LOW CLEARANCE

Bridges having vertical clearances of less than 35 ft, costing over \$500,000, and having no single span (as measured by the supporting foundations) longer than 400 ft in length.

SHORT SPAN BRIDGES

Bridges having fixed spans and costing less than \$500,000.

HIGHWAY GRADE SEPARATION BRIDGES

Bridges whose basic purpose is highway grade separation as contrasted to the above categories.

ELEVATED HIGHWAYS OR VIADUCTS

Bridges having more than five spans, which cross over one or more established traffic lanes, and which may afford access for pedestrian travel and for parking.

MOVABLE SPAN BRIDGES

Bridges having a movable span.

SPECIAL PURPOSE BRIDGES

Includes pedestrian overpass bridges, and other special purpose bridges not identifiable to one of the above categories.

The enduring beauty of steel bridges is eloquent tribute to the vision and skill of the men who plan, design and build them. The bridge designer of today is both artist and engineer. He understands the potential for strength and beauty which is inherent in steel structures, and he knows that aesthetic appearance can be achieved at no sacrifice of efficiency or economy. The simple grace of a highway overpass, no less than the majestic sweep of a river crossing, reflects a creative integration of structure, function and form, skillfully executed in beautiful bridges of steel.

To promote a more widespread appreciation of the aesthetics of steel bridges and to honor the architectural excellence of modern bridge design, the American Institute of Steel Construction sponsors an annual Prize Bridge Competition. Each year a distinguished Jury of Awards, composed of leading educators, architects, and engineers, selects the steel bridges which it judges to be the most beautiful of those opened to traffic in the United States during the previous year.

To establish an equitable basis for competition, awards are made in each of several contest classifications. Size, cost and operating conditions determine the class in which each entry is eligible to compete. The prize winning bridges are marked with a stainless steel plaque, and the designers, owners and steel fabricators are awarded engraved certificates in recognition of their contribution and achievement.

The American Institute of Steel Construction sponsors this competition and awards the prizes in the belief that it is helping to render a public service by stimulating a lasting interest in improved bridge design.

JURY OF AWARDS

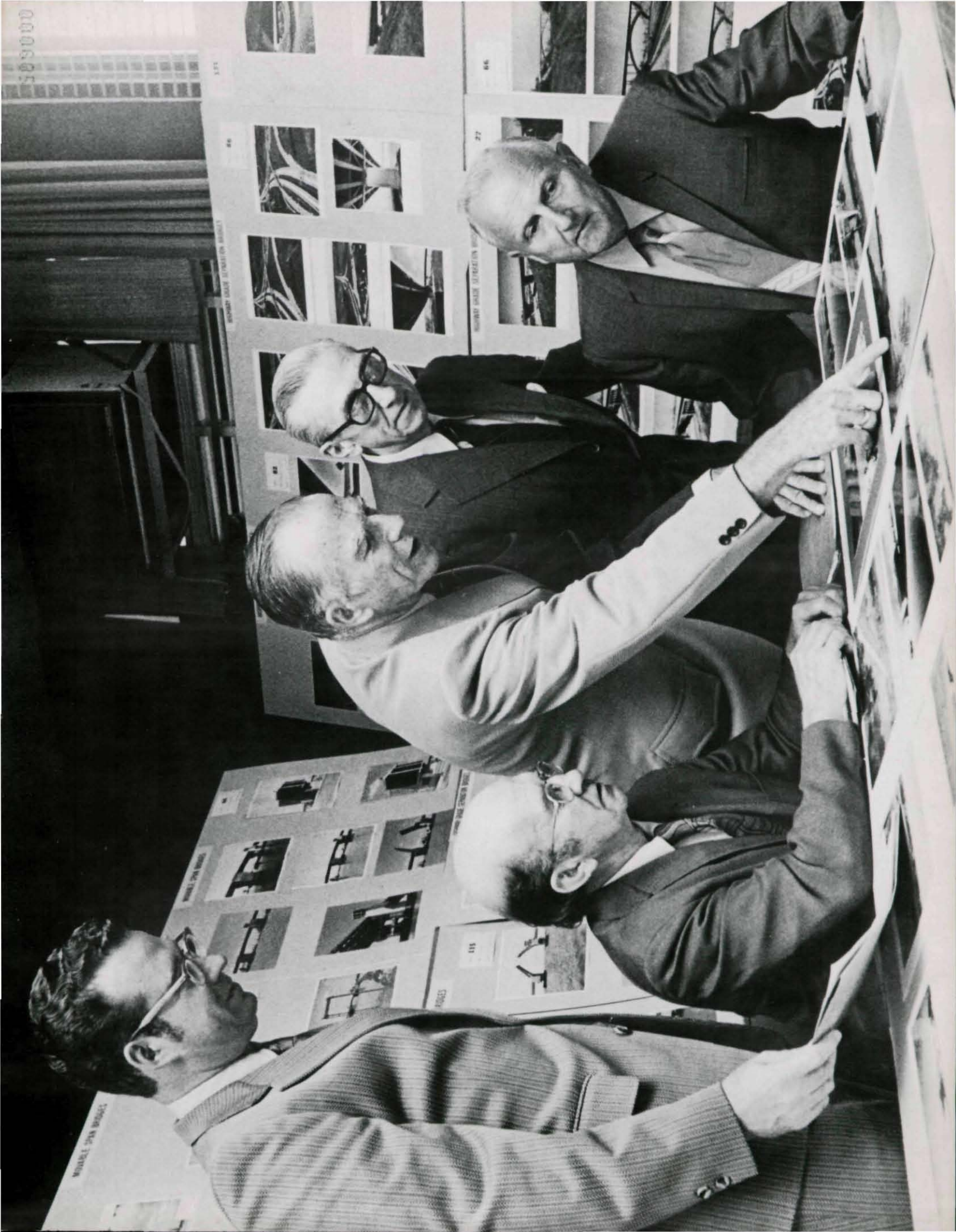
RALPH R. BARTELSMEYER
Deputy Federal Highway Administrator
U.S. Department of Transportation
Washington, D.C.

ARTHUR L. ELLIOTT, F.ASCE
Bridge Engineer—Planning, Division of Highways
State of California, Sacramento, California

EGBERT R. HARDESTY, F.ASCE
Hardesty & Hanover, Consulting Engineers
New York, New York

THOMAS E. STELSON, F.ASCE
Dean, College of Engineering
Georgia Institute of Technology
Atlanta, Georgia

CHARLES W. YODER, F.ASCE
President-elect, American Society of Civil Engineers
C. W. Yoder & Associates
Milwaukee, Wisconsin



Atchafalaya River Bridge

PRIZE BRIDGE 1973 / LONG SPAN

DESIGNER Modjeski and Masters, Harrisburg, Pennsylvania

OWNER Louisiana Dept. of Highways, Baton Rouge, Louisiana

GENERAL CONTRACTORS *Superstructure:* John F. Beasley Construction Company, Dallas, Texas
Substructure: Massman Construction Company, Kansas City, Missouri

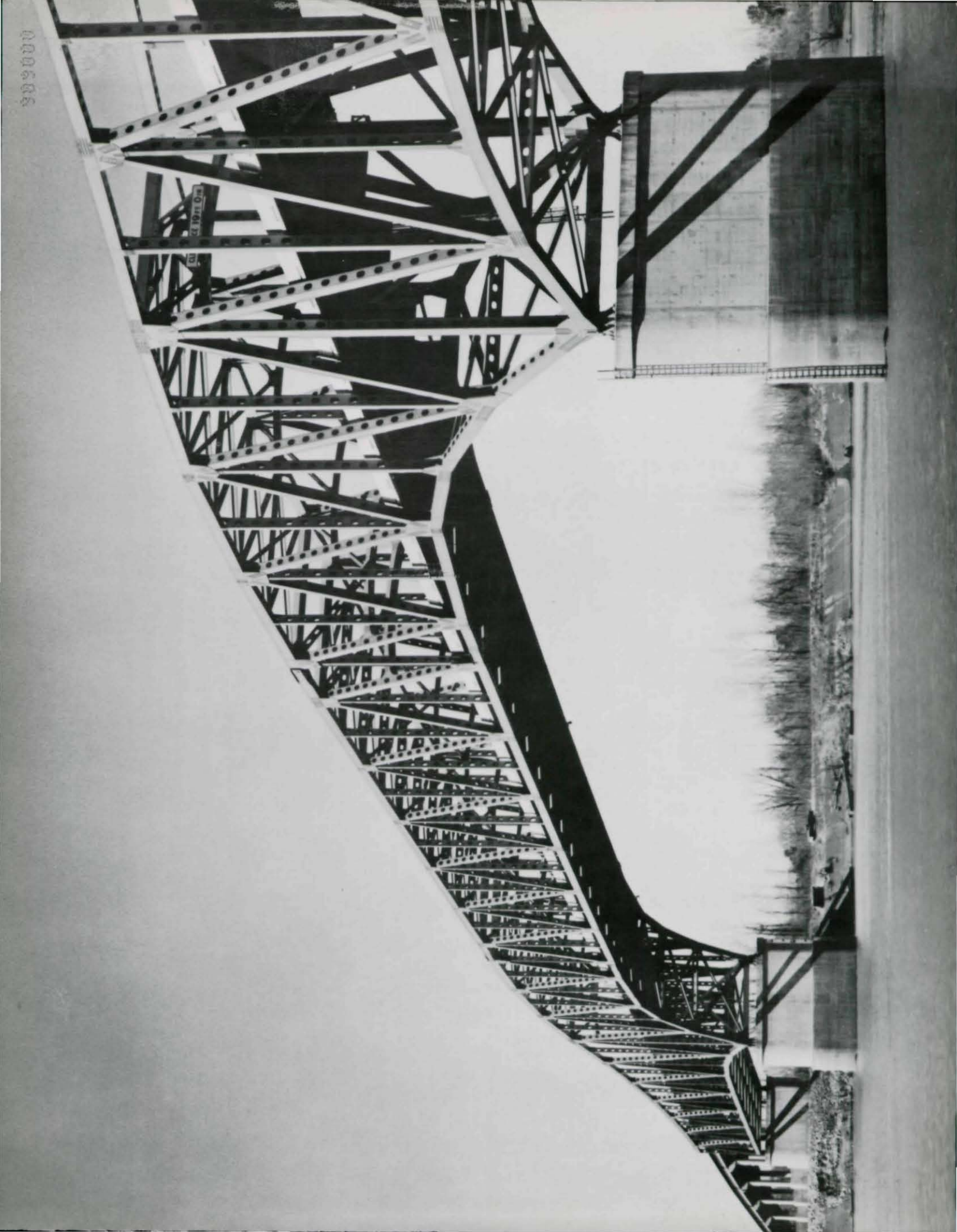
FABRICATOR Vincennes Steel Corporation, Division of NOVO Corporation, Vincennes, Indiana

ERECTOR John F. Beasley Construction Company, Dallas, Texas

Jurors' Comments: "This bridge has a slender grace that is most attractive. The balance between the center and end spans and the overall geometry present a smooth, pleasing river crossing."



Simmesport, Louisiana



Railway Bridge

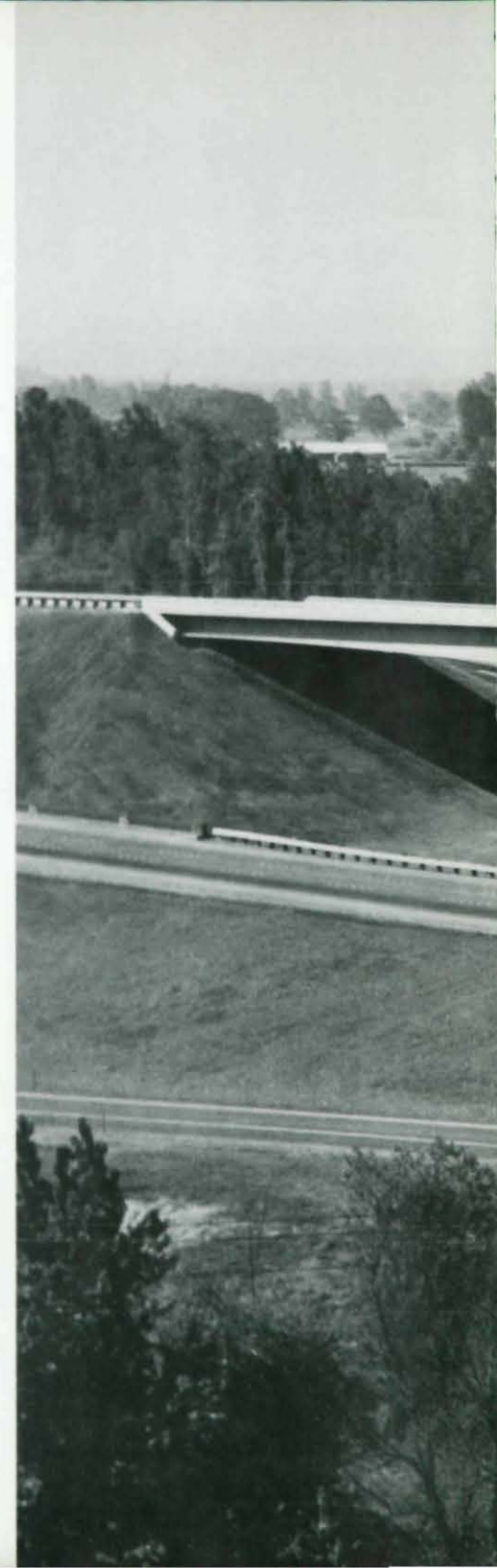
LL Line Over N. P. Ry. & LD 5 Line
PRIZE BRIDGE 1973 / MEDIUM SPAN, LOW CLEARANCE

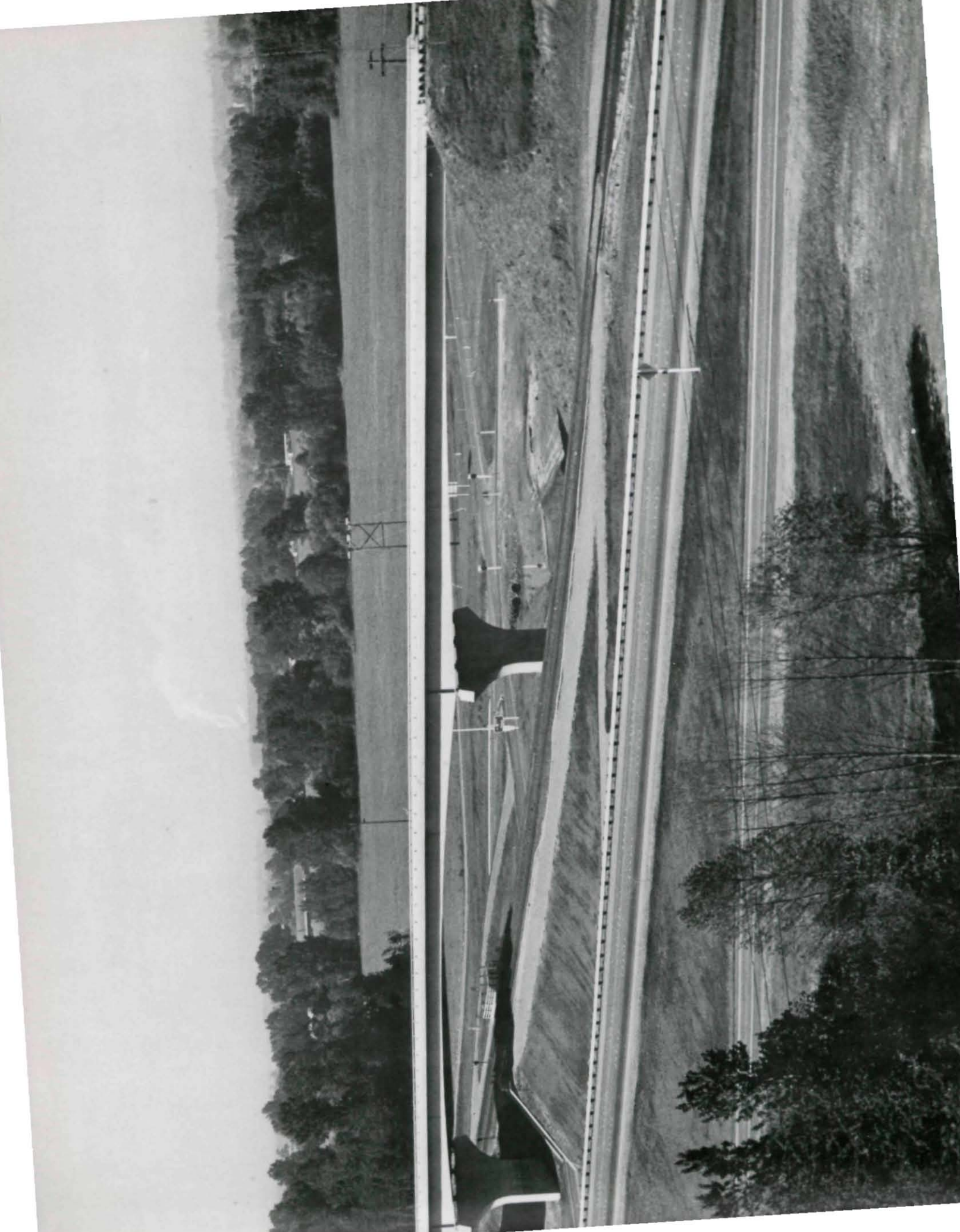
DESIGNER Washington State Highway Commission, Olympia, Washington
ARCHITECTURAL CONSULTANT Edward J. Green, AIA, Olympia, Washington
OWNER State of Washington, Olympia, Washington
GENERAL CONTRACTOR Peter Kiewit Sons' Co., Vancouver, Washington
FABRICATOR Isaacson Structural Steel Company, Division of Isaacson Corporation, Seattle, Washington
ERECTOR Peter Kiewit Sons' Co., Vancouver, Washington

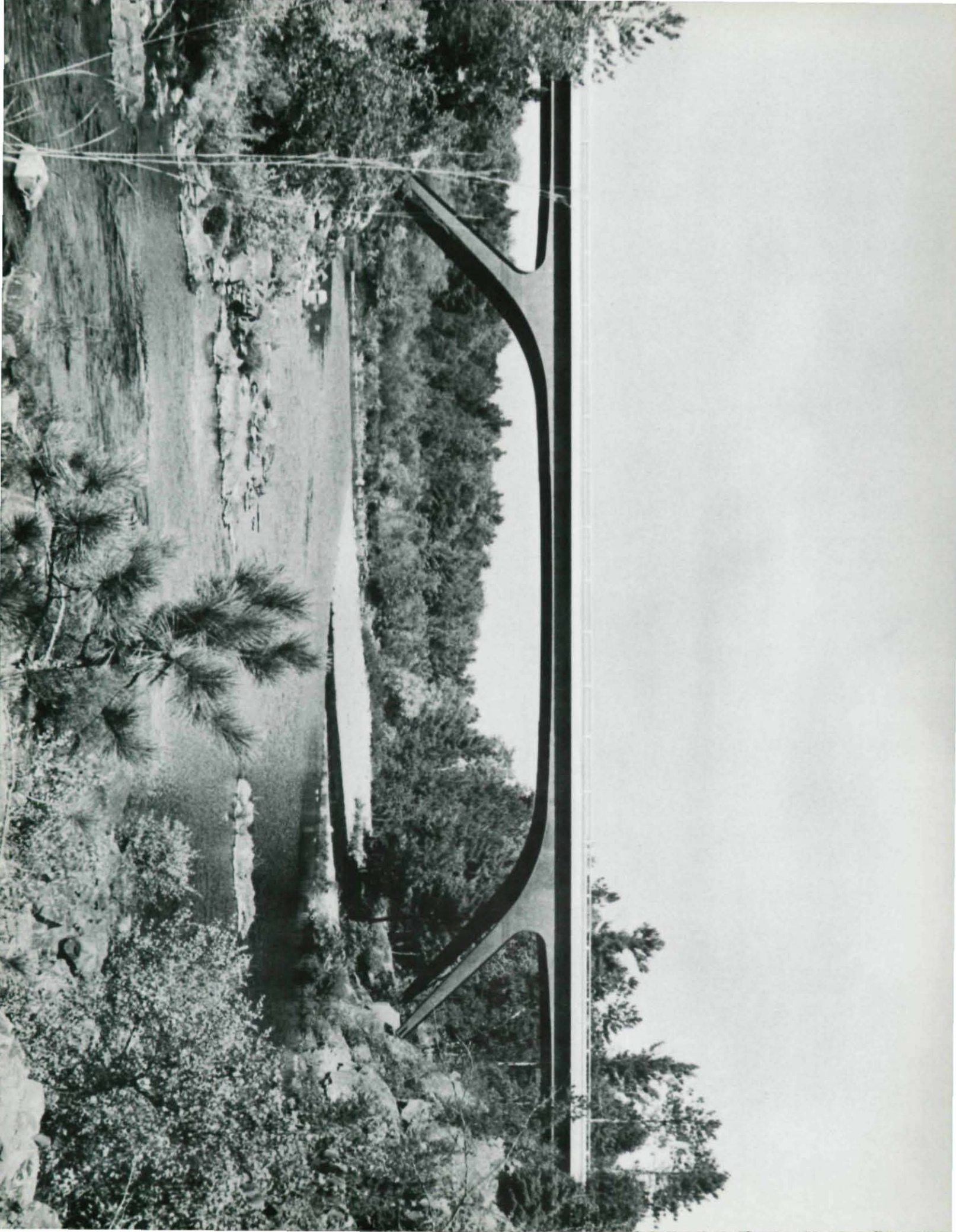
Jurors' Comments: "Graceful and well proportioned, this bridge fits beautifully into the landscape. The haunched girders are especially well planned and add an intriguing subtlety to the structure."



Woodland, Washington







Hatfield, Wisconsin

Hatfield Bridge

PRIZE BRIDGE 1973 / SHORT SPAN

DESIGNER Owen Ayers & Associates, Eau Claire, Wisconsin

OWNER Jackson County Highway Dept., Black River Falls, Wisconsin

GENERAL CONTRACTOR Lunda Construction Company, Black River Falls, Wisconsin

FABRICATOR Phoenix Steel Corporation, Eau Claire, Wisconsin

ERECTOR Lunda Construction Company, Black River Falls, Wisconsin

Jurors' Comments: "A graceful rustic bridge that fits beautifully into a magnificent setting. The nicely inclined bents seem to provide a picture frame for this lovely site and become a relevant part of the entire scene."



Glen Lily Road No. 2

Over Green River Parkway
PRIZE BRIDGE 1973 / HIGHWAY GRADE SEPARATION

DESIGNER Kroboth Engineers, Inc., Lexington, Kentucky

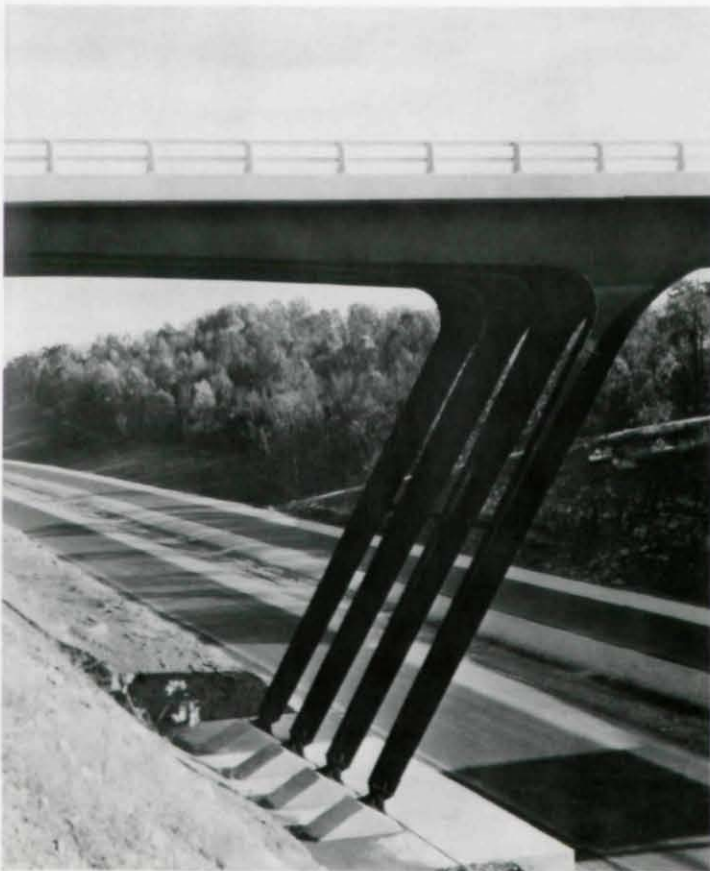
OWNER Commonwealth of Kentucky, Dept. of Transportation, Frankfort, Kentucky

GENERAL CONTRACTOR Peter Kiewit Sons' Co., Omaha, Nebraska

FABRICATOR Peden Steel Company, Raleigh, North Carolina

ERECTOR Nashville Bridge Company, Nashville, Tennessee

Jurors' Comments: "This light and airy bridge beautifully and naturally frames the picture ahead for the approaching motorist to enjoy. It is particularly well suited to the site."



Bowling Green, Kentucky



Spokane, Washington

Latah Creek Bridge

PRIZE BRIDGE 1973 / ELEVATED HIGHWAYS OR VIADUCTS

DESIGNER Howard Needles Tammen & Bergendoff, Kansas City, Missouri

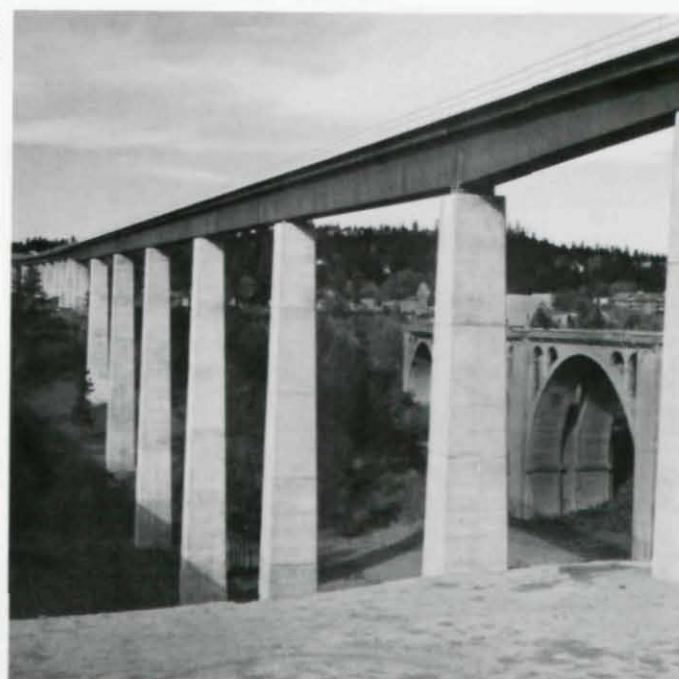
OWNER Burlington Northern, St. Paul, Minnesota

GENERAL CONTRACTOR Hensel Phelps Construction Company, Greeley, Colorado

FABRICATOR Kansas City Structural Steel Co., Kansas City, Kansas

ERECTOR Don L. Cooney, Inc., Tacoma, Washington

Juror's Comments: "Simple, yet majestic, this bridge appears light as a ribbon flowing across a deep valley. It is a breathtaking structure that provides a fine illustration of the effective use of modern materials and technology."



Harvey Canal Bridge

PRIZE BRIDGE 1973 / MOVABLE SPAN

DESIGNER de Lauréal Engineers, Inc., New Orleans, Louisiana

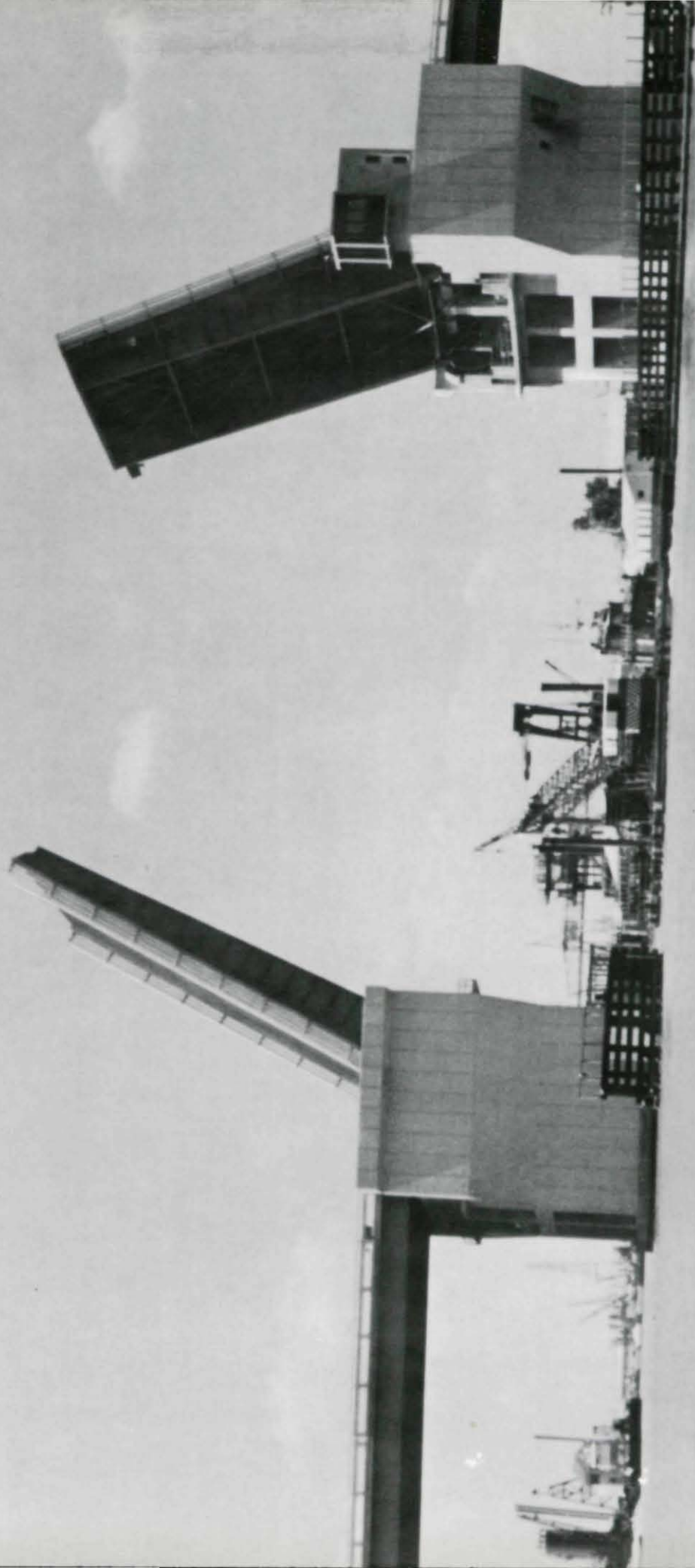
OWNER Jefferson Parish, Dept. of Roads & Bridges, Gretna, Louisiana

GENERAL CONTRACTOR Boh Bros. Construction Co., Inc., New Orleans, Louisiana

FABRICATOR/ERECTOR Bristol Steel & Iron Works, Inc., Bessemer Division, Bristol, Virginia

Jurors' Comments: "This graceful bridge is a fine tribute to the thoughtful design devoted to usually difficult details in a bridge of this type. The result is one of overall attractiveness. The arrangement of the pieces is nicely done and the special treatment given the operator's house reflects considerable thought and attention."







San Angelo, Texas

Pedestrian Overpass At Avenue Z

PRIZE BRIDGE 1973 / SPECIAL PURPOSE

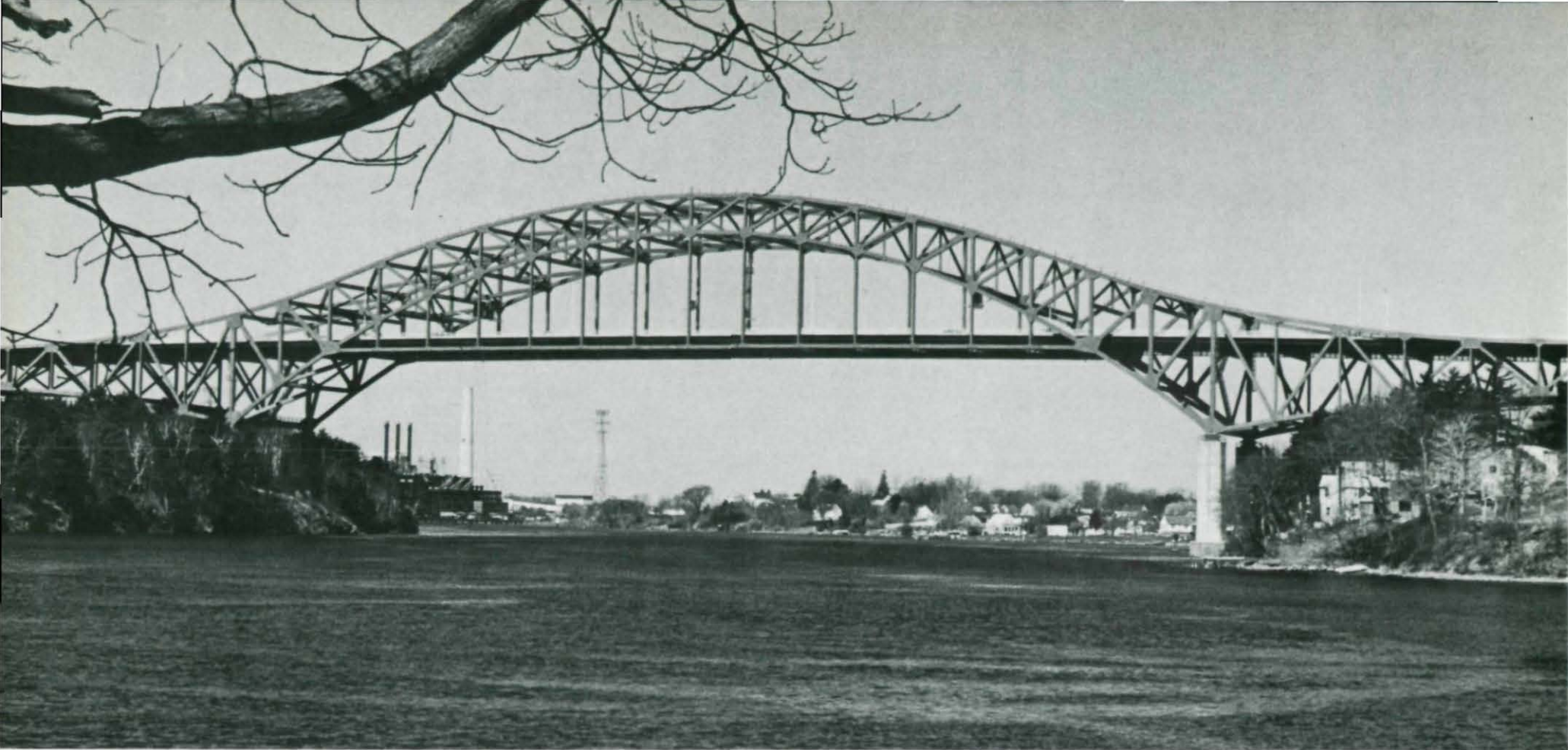
DESIGNER/OWNER Texas Highway Dept., Austin, Texas

GENERAL CONTRACTOR HCW Construction Co., Inc., Odessa, Texas

FABRICATOR Robberson Steel Company, Oklahoma City, Oklahoma

ERECTOR HCW Construction Co., Inc., Odessa, Texas

Jurors' Comments: "This is an attractive pedestrian bridge that seems to exactly state its purpose. It presents a free flowing feeling and the end ramps blend beautifully into the design."



Portsmouth, New Hampshire—Kittery, Maine

Piscataqua River Bridge

AWARD OF MERIT 1973 / LONG SPAN

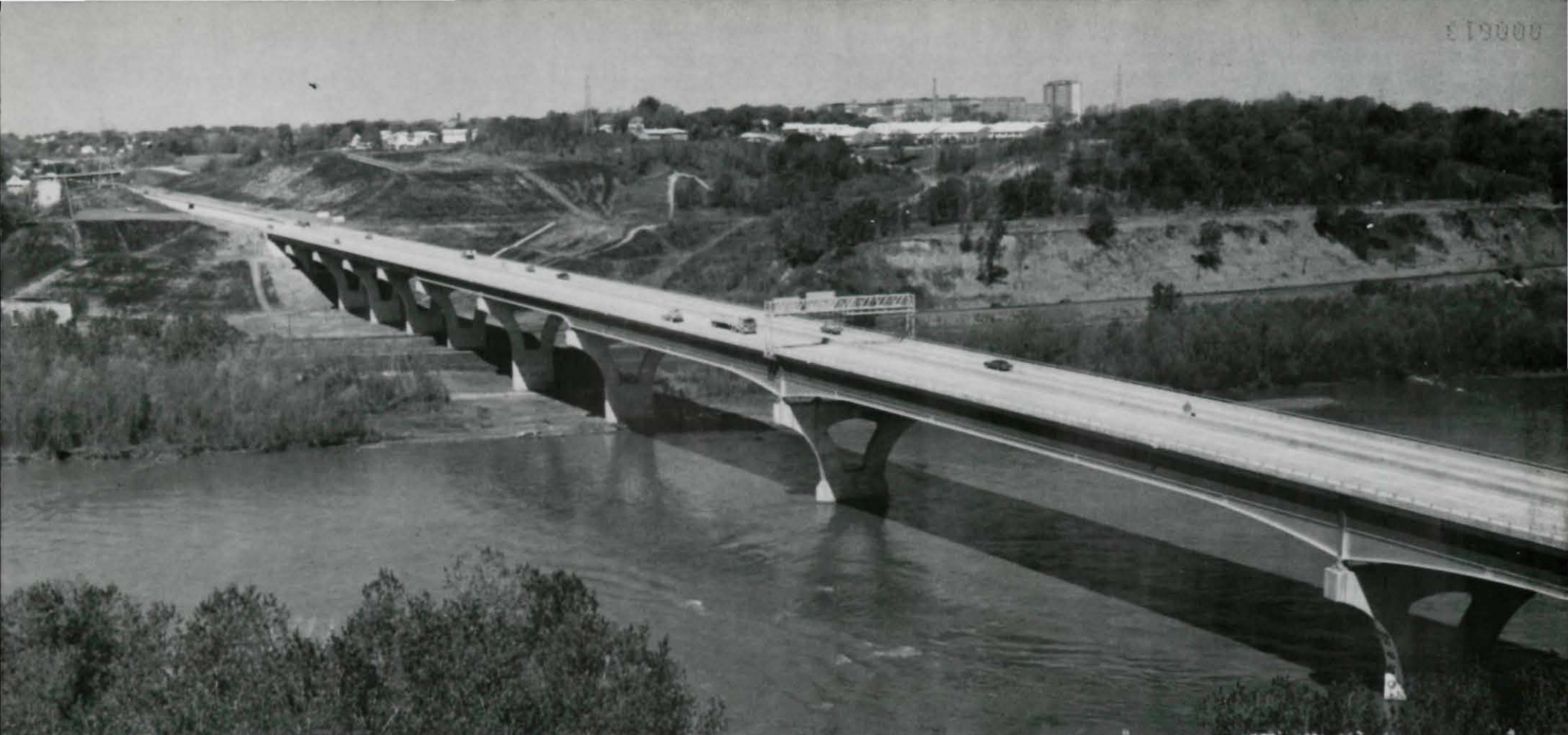
DESIGNER Hardesty & Hanover, New York, New York

OWNERS State of Maine, Dept. of Transportation, Augusta, Maine
State of New Hampshire, Dept. of Public Works and Highways, Concord, New Hampshire

GENERAL CONTRACTORS Bethlehem Steel Corporation, Bethlehem Pennsylvania
Cianbro Corporation, Pittsfield, Maine

FABRICATORS Bancroft & Martin Inc., South Portland, Maine
Bethlehem Steel Corporation, Bethlehem, Pennsylvania

ERECTORS Bethlehem Steel Corporation, Bethlehem, Pennsylvania
Cianbro Corporation, Pittsfield, Maine



1-80 over Missouri River

AWARD OF MERIT 1973 / LONG SPAN

DESIGNER Howard Needles Tammen & Bergendoff, Kansas City, Missouri

OWNERS Iowa State Highway Commission, Ames, Iowa
Nebraska Dept. of Roads, Lincoln, Nebraska

GENERAL CONTRACTORS *Superstructure:* Pittsburgh-Des Moines Steel Company, Pittsburgh, Pennsylvania
Substructure: Jensen Construction Company, Des Moines, Iowa

FABRICATOR Pittsburgh-Des Moines Steel Company, Pittsburgh, Pennsylvania

ERECTOR John F. Beasley Construction Company, Dallas, Texas



Omaha, Nebraska—Council Bluffs, Iowa



Alderpoint Bridge

AWARD OF MERIT 1973 / MEDIUM SPAN, HIGH CLEARANCE

DESIGNER/OWNER County of Humboldt, Dept. of Public Works, Eureka, California

GENERAL CONTRACTOR Lew Jones Construction Co., San Jose, California

FABRICATOR/ERECTOR Kaiser Steel Corporation, Oakland, California



Eel River at Alderpoint, California



719000

Green River Bridge

AWARD OF MERIT 1973 / MEDIUM SPAN, HIGH CLEARANCE

DESIGNER/OWNER North Carolina Dept. of Transportation
and Highway Safety, Raleigh, North Carolina

GENERAL CONTRACTOR Wannamaker and Wells, Inc.
Orangeburg, South Carolina

FABRICATOR/ERECTOR American Bridge Division, United States Steel
Pittsburgh, Pennsylvania



Warsaw, Missouri

Missouri Highway 7 Over South Arm of Harry S. Truman Reservoir

AWARD OF MERIT 1973 / MEDIUM SPAN, HIGH CLEARANCE

DESIGNER Harrington and Cortelyou, Consulting Engineers, Kansas City, Missouri

RESPONSIBLE AGENCY U.S. Army Corps of Engineers, Missouri River Division

OWNER Missouri State Highway Commission, Jefferson City, Missouri

GENERAL CONTRACTOR Anderson Construction Company, Holton, Kansas

FABRICATOR Kansas City Structural Steel Co., Kansas City, Kansas

ERECTOR Anderson Construction Company, Holton, Kansas



West of Wolcott, Colorado

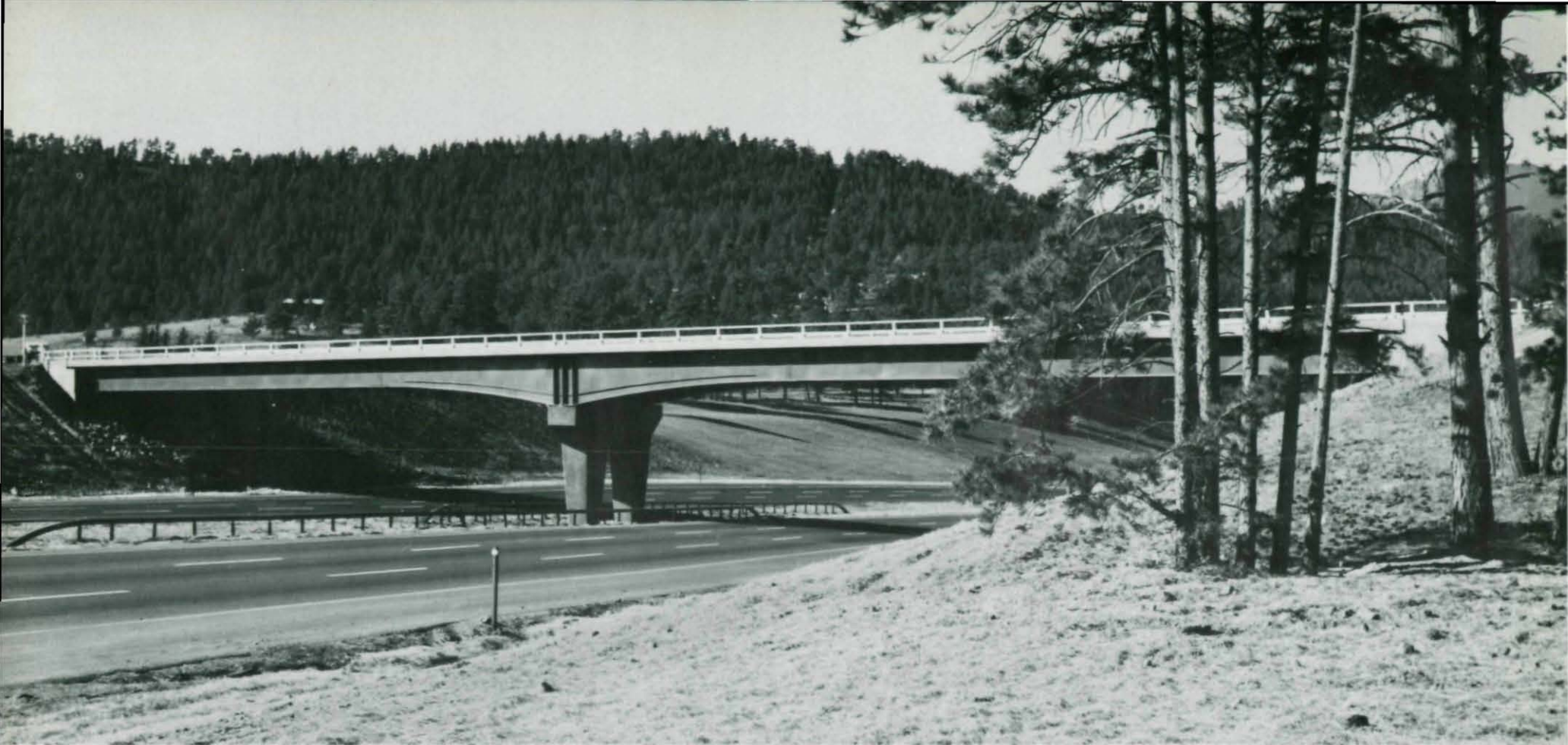
Eagle River Bridges On I-70
AWARD OF MERIT 1973 / MEDIUM SPAN, LOW CLEARANCE

DESIGNER/OWNER State of Colorado, Division of Highways, Denver, Colorado

GENERAL CONTRACTOR A. S. Horner Construction Co., Inc., Denver, Colorado

FABRICATOR The Midwest Steel & Iron Works Co., Denver, Colorado

ERECTOR A. S. Horner Construction Co., Inc., Denver, Colorado



West of Denver, Colorado

East Evergreen Interchange

AWARD OF MERIT 1973 / HIGHWAY GRADE SEPARATION

DESIGNER/OWNER State of Colorado, Division of Highways, Denver, Colorado

GENERAL CONTRACTOR Northwestern Engineering Company, Rapid City, South Dakota

FABRICATOR The Midwest Steel & Iron Works Co., Denver, Colorado

ERECTOR Northwestern Engineering Company, Rapid City, South Dakota



West of Frederick, Maryland

Ridge Road Arch Over I-70

AWARD OF MERIT 1973 / HIGHWAY GRADE SEPARATION

DESIGNER Green Associates, Inc., Towson, Maryland

OWNER Maryland Dept. of Transportation, Baltimore, Maryland

GENERAL CONTRACTOR C. William Hetzer, Inc., Hagerstown, Maryland

FABRICATOR/ERECTOR Pittsburgh-Des Moines Steel Company, Pittsburgh, Pennsylvania

West Connector Viaduct

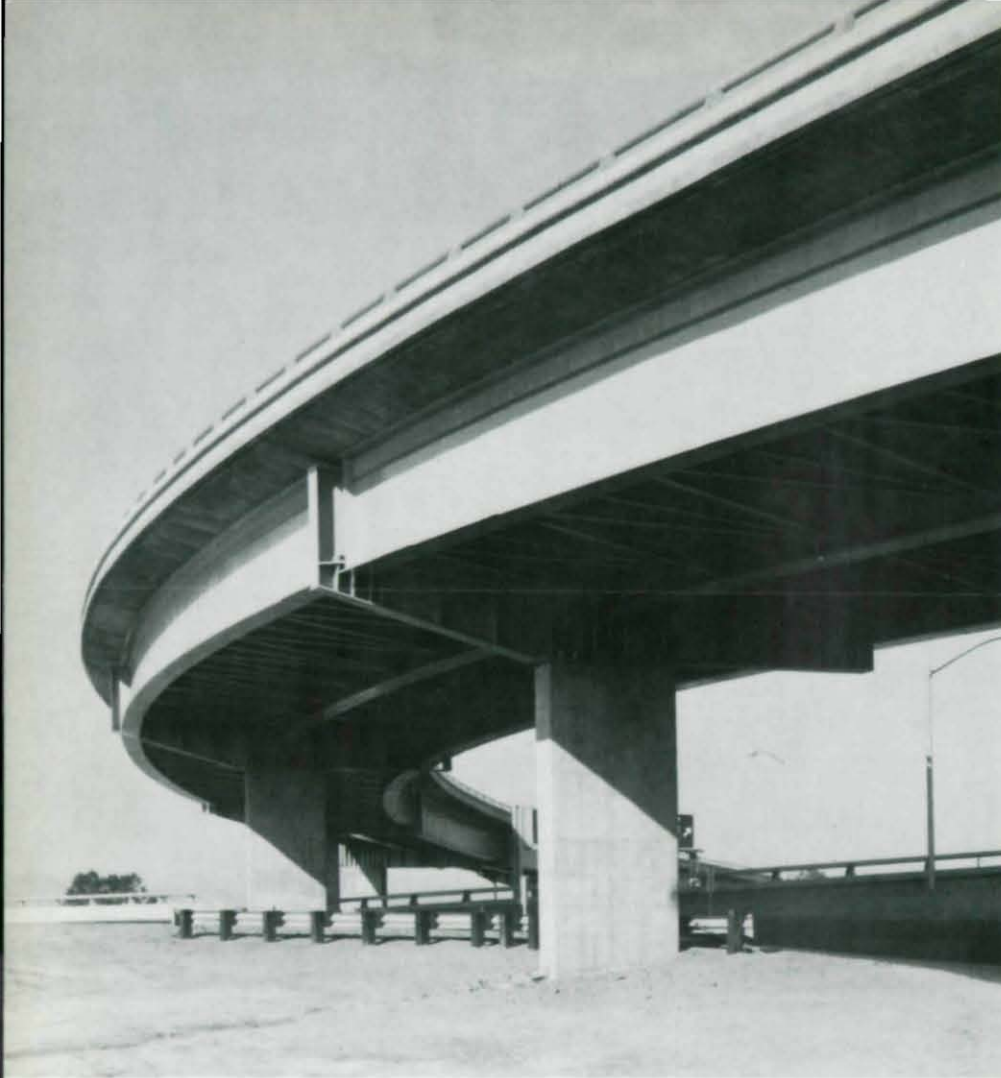
AWARD OF MERIT 1973 / ELEVATED HIGHWAYS OR VIADUCTS

DESIGNER California Division of Highways, Bridge Dept., Sacramento, California

OWNER State of California, Sacramento, California

GENERAL CONTRACTOR Lew Jones Constructon Co., San Jose, California

FABRICATOR/ERECTOR Pittsburgh-Des Moines Steel Company, Santa Clara, California



San Jose, California



Morgantown, West Virginia

Elevated PRT Guideway Over Monongahela Blvd.

AWARD OF MERIT 1973 / SPECIAL PURPOSE

DESIGNER Frederic R. Harris, Inc., Stamford, Connecticut

SPONSOR Urban Mass Transportation Administration, Washington, D.C.

GENERAL CONTRACTOR Trumbull Construction Company, Pittsburgh, Pennsylvania

FABRICATOR The Allied Metals Company, Niles, Ohio

ERECTOR Connell Steel Erectors, Youngstown, Ohio



Wantagh, New York

Pedestrian Bridge Over Wantagh State Parkway at Beltagh Avenue
AWARD OF MERIT 1973 / SPECIAL PURPOSE

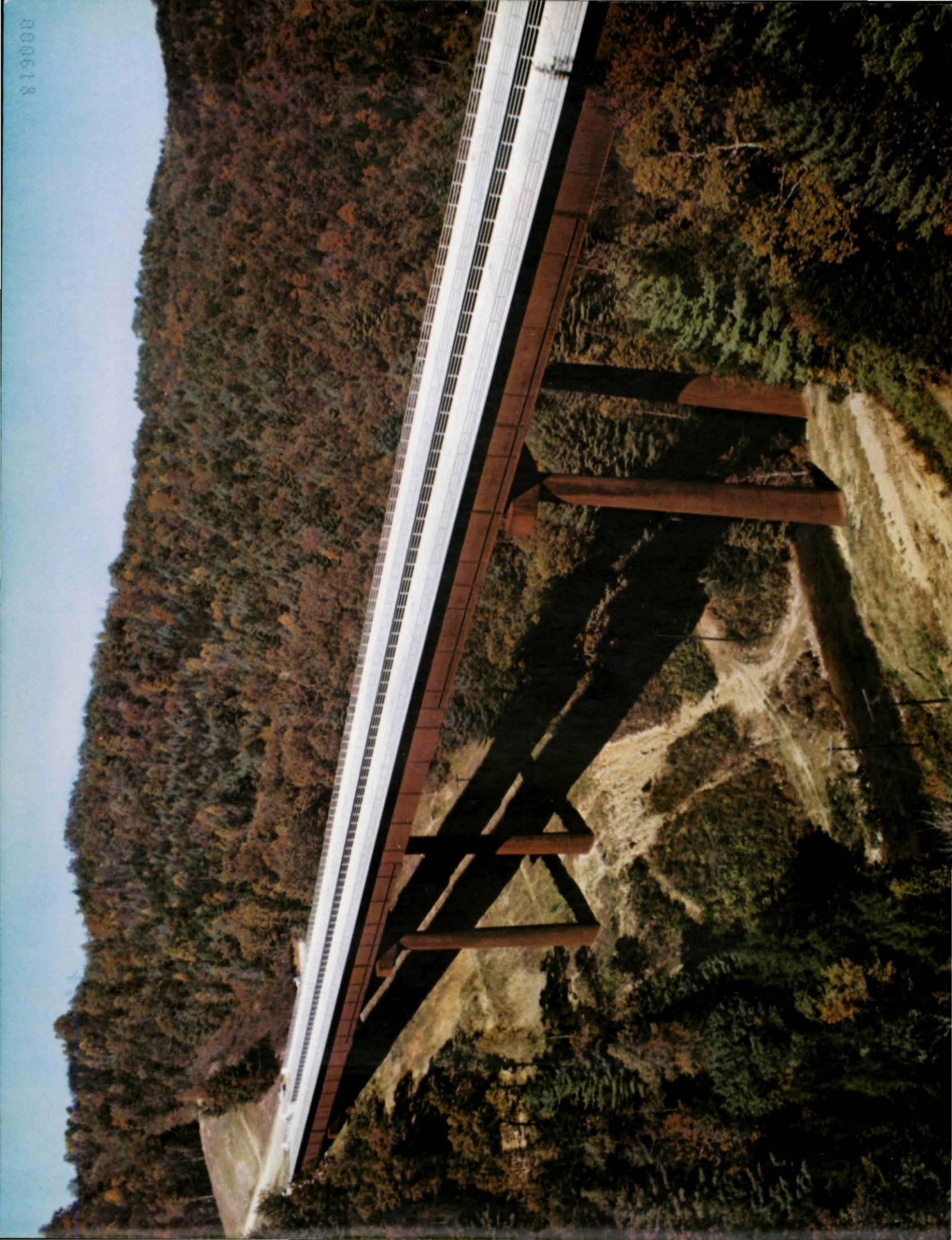
DESIGNER Andrews & Clark, Inc., New York, New York

OWNER Long Island State Park and Recreation Commission, Babylon, New York

GENERAL CONTRACTOR Horn Construction Co., Inc., Merrick, New York

FABRICATOR R & M Steel Corp., Carnegie, Pennsylvania

ERECTOR Horn Construction Co., Inc., Merrick, New York



000618



American Institute of Steel Construction
101 Park Avenue, New York, N.Y. 10017

